

## REFLECTIONS — HATTERAS



**Builder:** HATTERAS

**Year Built:** 1982

**Model:** Motor Yacht

**Price:** PRICE ON APPLICATION

**Location:** United States

**LOA:** 61' 0" (18.59m)

**Beam:** 18' 2" (5.54m)

**Min Draft:** 5' 6" (1.68m)

**Cruise Speed:** 15 Kts. (17 MPH)

Our experienced yacht broker, Andrey Shestakov, will help you choose and buy a yacht that best suits your needs **Reflections — HATTERAS** from our catalogue. Presently, at Shestakov Yacht Sales Inc., we have a wide variety of yachts available on our sale's list. We also work in close contact with all the big yacht manufacturers from all over the world.

If you would like to buy a yacht **Reflections — HATTERAS** or would like help answering any questions concerning purchasing, selling or chartering a yacht, please call **+1(954)274-4435**

---

# TABLE OF CONTENTS

---

TABLE OF CONTENTS	2
SPECIFICATIONS	6
Overview	6
Basic Information	6
Dimensions	6
Speed, Capacities and Weight	6
Accommodations	6
Hull and Deck Information	7
Engine Information	7
DETAILED INFORMATION	8
Vessel Overview	8
Dinette	8
Galley	8
Master Stateroom	8
Master Head	9
VIP Stateroom	9
VIP Head	9
Guest Stateroom 1	10
Guest Head	10
Guest Stateroom 2	10
Guest Head 2	10
Lower Helm	10
Fly Bridge	11
Electrical System	11
Engine Room	11
Deck	12
Exclusions	12
Disclaimer	12

---

PHOTOS	13
Salon	13
Salon	13
Salon	13
Salon	13
Salon	13
Salon	13
Salon Entertainment Center	14
Galley	14
Galley	14
Galley	14
Galley	14
Dinette	14
Electrical Panel	14
Companionway	14
Guest Stateroom 1	15
Guest Head	15
Guest Head	15
Guest Stateroom 2	15
Guest Stateroom 2	15
Guest Stateroom 2	15
Master Stateroom	15
Master Stateroom	15
Master Stateroom	16
Master Stateroom	16
Master Head	16
VIP Stateroom	16
VIP Stateroom	16
VIP Head	16

---

Laundry	16
Stairs to Flybridge	16
Flybridge Helm Station	17
Flybridge Refrigerator	17
Flybridge Table	17
Flybridge Table	17
Flybridge Wet Bar	17
Fore Deck Seating	17
Helm Seat	17
Interior Helm	17
Interior Helm	18
Interior Helm	18
Interior Helm	18
Interior Helm	18
Interior Helm	18
Interior Helm Station	18
Engine Room Door	18
Engine Room	18
Engine Room	18
Engine Room	19
Engine Room	19
Engine Room	19
Engine Room	19
Engine Room	19
Engine Room	19
Engine Room	19
Fender Racks	19
SAT TV	19
Vessel Data	20
Windlass	20
Profile	20

---

---

CONTACTS	21
Contact details	21
Telephones	21
Office hours	21
Address	21

---

# SPECIFICATIONS

---

## Overview

---

### OWNER WILL CONSIDER QUALITY TRADES

Reflections has been in fresh water for the past 14 years. The owner is very knowledgeable and currently owns a marina. This boat has been updated and upgraded. Upper and lower helm stations, huge salon, Niad stabilizers, two generators, huge master stateroom, galley, large flybridge area and custom decor make this Hatteras Wide Body Motor Yacht a gem for her next owner.

## Basic Information

---

**Category:** Motor Yacht

**Model Year:** 1982

**Year Built:** 1982

**Country:** United States

**Fly Bridge:** Yes

## Dimensions

---

**LOA:** 61' 0" (18.59m)

**Beam:** 18' 2" (5.54m)

**Min Draft:** 5' 6" (1.68m)

## Speed, Capacities and Weight

---

**Cruise Speed:** 15 Kts. (17 MPH)

**Displacement:** 92000 Pounds

**Water Capacity:** 350 Gallons

**Fuel Capacity:** 1150 Gallons

## Accommodations

---

**Total Cabins:** 4

**Total Berths:** 6

**Sleeps:** 8

**Total Heads:** 4

---

## Hull and Deck Information

---

**Hull Material:** Fiberglass

---

## Engine Information

---

**Engines:** 2

**Manufacturer:** Detroit Diesel

**Model:** 12V71 TI

**Engine Type:** Inboard

**Fuel Type:** Diesel

---

# DETAILED INFORMATION

---

## Vessel Overview

---

### OWNER WILL CONSIDER QUALITY TRADES

Reflections has been in fresh water for the past 14 years. The owner is very knowledgeable and currently owns a marina. This boat has been updated and upgraded. Upper and lower helm stations, huge salon, Niad stabilizers, two generators, huge master stateroom, galley, large flybridge area and custom decor make this Hatteras Wide Body Motor Yacht a gem for her next owner.

### Dinette

---

- Custom table in salon
- A/C
- Easy access to galley
- Accent lighting
- Inside large salon area

### Galley

---

- Frigidaire refrigerator (new 2011)
- Maytag dishwasher
- Hot water heater 50 gallon
- GE microwave/convection oven
- Custom counter tops
- SS sink with Kohler faucet
- Water filter
- Cabinets
- Storage
- GE stove top
- Garbage disposal (new 2011)
- Custom Tiger sole galley floor
- Trash compactor
- A/C
- Open access to salon

### Master Stateroom

---

- TV



- King berth
- Carpet
- Air conditioning
- Hanging lockers
- Vanity
- Custom throw pillows
- Custom bedding
- Storage
- Drawers
- Lighting
- Access to private head
- Storage

---

## Master Head

---

- Shower
- Sink with faucet
- Head
- Mirror
- Medicine cabinet
- Exhaust

---

## VIP Stateroom

---

- TV
- Queen berth
- Air conditioning
- Hanging locker
- Storage
- Throw pillows
- Custom bedding

---

## VIP Head

---

- Shower
- Medicine cabinet
- Head
- Sink with faucet
- Storage

---

## Guest Stateroom 1

---

- Upper and lower berths
- Hanging locker
- Carpet
- Throw pillows
- Custom bedding
- A/C
- Lighting

---

## Guest Head

---

- Shower
- Head
- Sink with faucet
- Medicine cabinet

---

## Guest Stateroom 2

---

- Side x side single berths
- Carpet
- Hanging locker
- A/C
- Lighting
- Throw pillows
- Custom bedding

---

## Guest Head 2

---

- Shower
- Head
- Sink with faucet
- Cabinets

---

## Lower Helm

---

- Helm seating
- Engine controls
- Depth sounder
- Northstar 961 GPS plotter

- Northstar 951 GPS plotter
- Robertson AP-300 Auto pilot
- Furuno 48 mile radar
- Rudder indicator
- Icom VHF radio (2)
- Richie compass
- Niad stabilizers
- EPIRB
- ACR spotlight (2)

---

## Fly Bridge

---

- Northstar 961 GPS Plotter
- Northstar 951 GPS Plotter
- Robertson autopilot
- Furuno 24 mile radar
- Rudder indicator
- Icom VHF radio
- Azimuth 100 electronic compass
- Stabilizer controls
- Eight man life raft
- Bimini top
- Wet Bar
- Teak table with seating
- Large U-Shaped seating area
- New exterior cushions
- Canvas covers
- Storage
- Huge entertainment area

---

## Electrical System

---

- 21 kw Kohler Generator (2375 hours)
- 15 kw Kohler Generator (275 hours)

---

## Engine Room

---

- Twin Detroit Diesel 12V71 TI
- Engine synchronizer
- Fuel priming pumps
- Oil Change system

- 21kw Kohler generator (2375 hours)
- 15kw Kohler generator (275 hours)
- Batteries
- Battery charger
- Niad stabilizers
- Racor fuel filters
- Air seps
- 50 gallon water heater
- Water filter
- Filtration Concepts 800 GPD watermaker
- (2) spare props
- Spare shaft
- Trim tabs
- Fire system
- Fresh water pump
- Air compressor

---

## Deck

---

- Swim ladder
- Cockpit table
- Marquipt low profile davit
- Eight man life raft
- Galley Maid windlass
- Delta plow anchor
- Marquipt boarding ladder
- Fore deck bench seating
- Deck boxes (2)

---

## Exclusions

---

Owner's personal belongings.

---

## Disclaimer

---

The Company offers the details of this vessel or yacht in good faith but cannot guarantee or warrant the accuracy of this information nor warrant the condition of the vessel. A buyer should instruct his representatives, agents, or his surveyors, to investigate such details as the buyer desires validated. This vessel or yacht is offered subject to prior sale, price change, or withdrawal without notice.

# PHOTOS

Salon



Salon



Salon



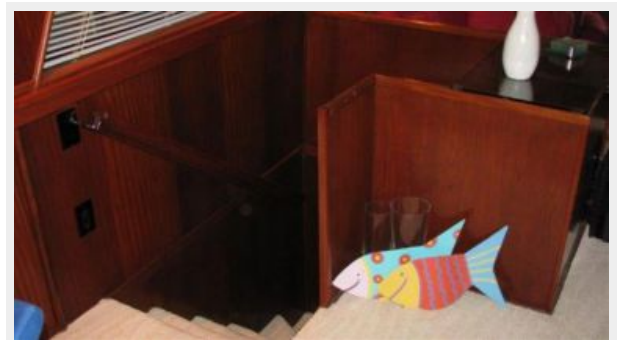
Salon



Salon



Salon



**Salon Entertainment Center**



**Galley**



**Galley**



**Galley**



**Galley**



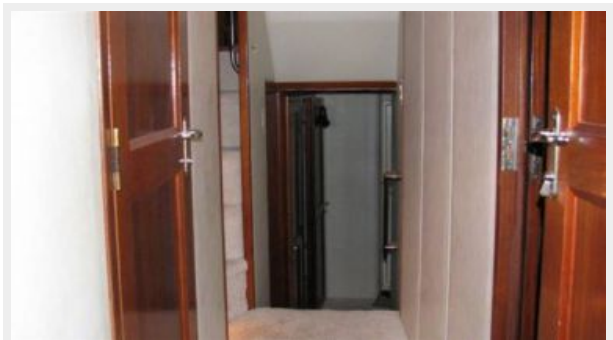
**Dinette**



**Electrical Panel**



**Companionway**





**Guest Stateroom 1**



**Guest Head**



**Guest Head**



**Guest Stateroom 2**



**Guest Stateroom 2**



**Guest Stateroom 2**



**Master Stateroom**



**Master Stateroom**



**Master Stateroom**



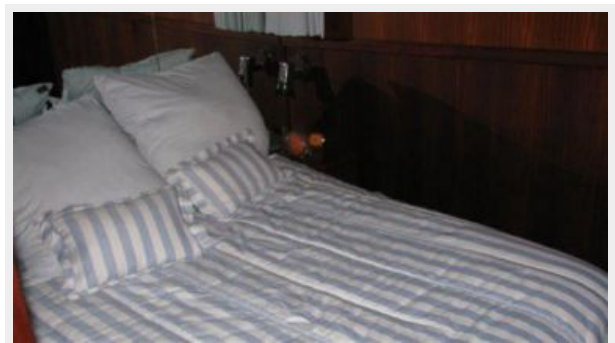
**Master Stateroom**



**Master Head**



**VIP Stateroom**



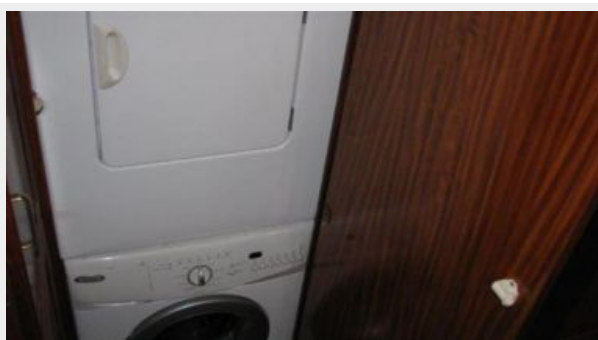
**VIP Stateroom**



**VIP Head**



**Laundry**



**Stairs to Flybridge**





**Flybridge Helm Station**



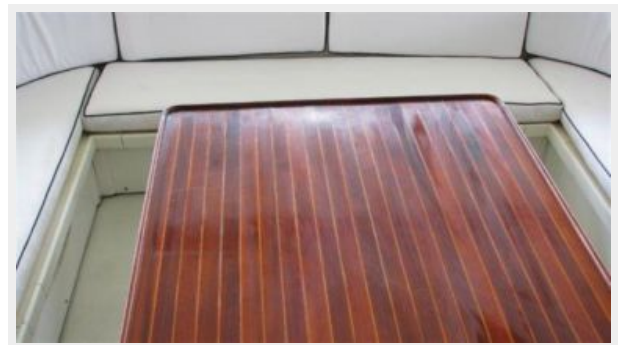
**Flybridge Refrigerator**



**Flybridge Table**



**Flybridge Table**



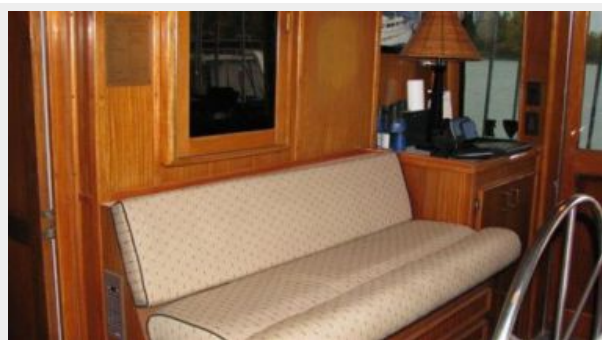
**Flybridge Wet Bar**



**Fore Deck Seating**



**Helm Seat**



**Interior Helm**



Interior Helm



Interior Helm



Interior Helm



Interior Helm



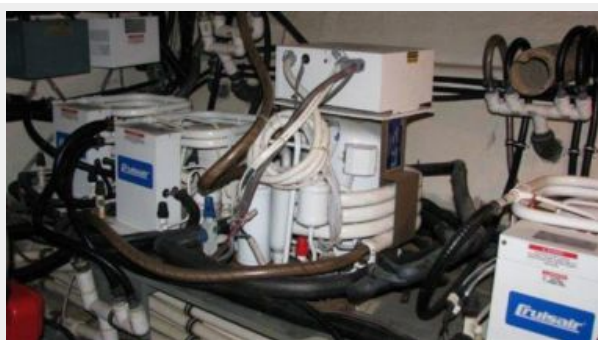
Interior Helm Station



Engine Room Door



Engine Room



Engine Room





**Engine Room**



**Engine Room**



**Engine Room**



**Engine Room**



**Engine Room**



**Engine Room**



**Fender Racks**



**SAT TV**



### Vessel Data



### Windlass



### Profile



# CONTACTS

---

Andrey Shestakov, leading yacht broker of the sales department of Shestakov Yacht Sales Inc. Shestakov Yacht Sales Inc., the official representative of the Miami/Fort Lauderdale FL headquarters.

## Contact details

---

Email: [andrey@shestakovyachtsales.com](mailto:andrey@shestakovyachtsales.com)

Web: [shestakovyachtsales.com/en/](http://shestakovyachtsales.com/en/)

## Telephones

---

USA: +1(954)274-4435

## Office hours

---

Monday – Saturday: **9:00 - 21:00** EDT

Sunday: **closed**

## Address

---



Harbour Towne Marina, 850 NE 3rd St,  
STE 213, Dania, FL 33004