

BEL CANTO — GRAND BANKS



Builder: GRAND BANKS

Year Built: 1984

Model: Trawler

Price: PRICE ON APPLICATION

Location: United States

LOA: 42' 0" (12.80m)

Beam: 13' 7" (4.14m)

Min Draft: 4' 2" (1.27m)

Our experienced yacht broker, Andrey Shestakov, will help you choose and buy a yacht that best suits your needs **BEL CANTO — GRAND BANKS** from our catalogue. Presently, at Shestakov Yacht Sales Inc., we have a wide variety of yachts available on our sale's list. We also work in close contact with all the big yacht manufacturers from all over the world.

If you would like to buy a yacht **BEL CANTO — GRAND BANKS** or would like help answering any questions concerning purchasing, selling or chartering a yacht, please call **+1(954)274-4435**

TABLE OF CONTENTS

TABLE OF CONTENTS	2
SPECIFICATIONS	5
Overview	5
Basic Information	5
Dimensions	5
Speed, Capacities and Weight	5
Accommodations	5
Hull and Deck Information	6
Engine Information	6
DETAILED INFORMATION	7
Vessel Walkthrough & Accommodations	7
Guest Stateroom	7
Salon	8
Galley	9
Master Stateroom	9
Navigation & Electronics Equipment	10
Deck and Hull Equipment	10
Engine & Mechanical	11
Electrical Equipment	12
Exclusions	12
Disclaimer	12
PHOTOS	13
Steps to Guest Stateroom	13
Salon Forward	13
Guest/Day Head	13
Guest Stateroom Forward	13
Salon Aft	14
Lower Helm	14

Helm Deck Access to Starboard	14
Galley to Port	14
3 Burner Electric Stove	14
Large SS Sink	14
Dinette to Starboard	15
Comfortable Dining	15
Deck Access to Port	15
Vizio 42' LED TV	15
Entrance to Master Stateroom and Ensuite Head	15
Master Stateroom Aft	15
Single Berth to Port	16
Double Berth to Starboard	16
Ensuite Master Head to Starboard	16
Master Separate Shower	16
Entrance Open to MSR	16
Cockpit	16
Dinghy and Outboard Storage	17
Flybridge Forward	17
Helm	17
Gauges and Electronics	17
Scopinich Flybridge Table Open	17
Flybridge Aft Deck	17
Radar Arch, Mast and Boom	18
Trunk Cabin View from Flybridge	18
Wide Side Decks	18
Switlik Life Raft	18
Ground Tackle	19
Cabin and Flybridge View Aft	19
Port Side Deck Aft	19

Stern View	19
Leyland 200 HP Diesel	20
Raycor Filters	20
AC Compressor	20
Port Side Hauled Out	20
Running Gear	20
CONTACTS	21
Contact details	21
Telephones	21
Office hours	21
Address	21

SPECIFICATIONS

Overview

This Grand Banks is ready to cruise! Schedule your showing today!

Located in Stuart, FL just 45 minutes north of West Palm Beach Airport.

Basic Information

Category: Trawler

Model Year: 1984

Year Built: 1984

Country: United States

Vessel Top: 2353

Fly Bridge: Yes

Cockpit: Yes

Dimensions

LOA: 42' 0" (12.80m)

Beam: 13' 7" (4.14m)

Min Draft: 4' 2" (1.27m)

Speed, Capacities and Weight

Displacement: 35000 Pounds

Water Capacity: 265 Gallons

Holding Tank: 50 Gallons

Fuel Capacity: 600 Gallons

Accommodations

Total Cabins: 2

Total Berths: 3

Sleeps: 5

Total Heads: 2

Hull and Deck Information

Hull Material: Fiberglass

Engine Information

Engines: 2

Manufacturer: Leyland

Model: 6TX200

Engine Type: Inboard

Fuel Type: Diesel

DETAILED INFORMATION

Vessel Walkthrough & Accommodations

Starting from the forward guest stateroom, there is an ensuite Head to starboard, sink with vanity and medicine cabinet. Also included is a "wet-head" shower. Plenty of light and fresh air is provided by an overhead hatch and two side windows. There is a cedar lined hanging closet to port with a second smaller locker next to it. Sleeping accommodations are provided by a V-berth with ample drawers and storage below. Moving aft we have a set of stairs that lift up for forward access to the engine room.

Up to the main Salon there is the lower helm station to starboard with a full set of electronics for traveling in less than perfect weather. Aft of helm is a day bar with liquor storage. Along the starboard side is a L-shaped settee with a GB teak dining table that can convert from cocktails to dinner for six. There is an entertainment center and storage to port, along with a port-side deck door. There is plenty of storage under settee and in the entertainment center.

On the portside is the full galley including an electric stove and oven. Large single sink, cream Formica counter tops, microwave and lot of storage for pots and pans and all of your cooking needs. Below is a Grunert refrigerator and another Sub-Zero Freezer aft of the port-side door. There is a large entertainment center with plenty of storage to port and a comfortable settee. One of the best features of Grand Banks is the large windows in the Salon providing natural light and ventilation. There are blinds throughout the Salon/ Galley. There is access to the engine room from the main salon with removable floor panels.

Going down three steps is the Master Stateroom. BEL CANTO features a double-sized berth on the starboard side with a single berth to port with a large 9 drawer bureau in between. There is an ensuite Head with a separate shower on the starboard side forward of the double berth. There are two hanging lockers to port. Access to the aft deck thru opening door - great for natural light and ventilation.

Guest Stateroom

Guest Stateroom:

- V-berth with navy upholstery
- Hanging locker with sliding doors
- (6) drawers
- Storage under berth
- (2) brass Grand Banks reading lights
- (2) opening windows
- Small teak bookcase
- Teak parquet sole

- Teak louvered entrance door with sliding hatch
- Steps raise for easy engine access
- Opening hatch
- Anchor locker access
- 12v fan
- Fire extinguisher

Guest Head:

- Raritan Head (Refit 2013)
- New faucets (2013)
- Large oval porcelain sink
- Formica countertops
- Mini blind over opening window
- Overhead exhaust vent - electric
- Hand held shower fixture
- Teak grate over sump pump shower well
- Large sliding door storage area and drawers

Salon

The Salon has the Galley forward to port and lower helm station to starboard. The starboard door is outboard of the lower helm station and leads to the starboard side deck. Aft of the helm station is the bar with ice-maker, glass and bottle storage, then the dining area with L-settee and Grand Banks drop leaf table. On the port side aft of the Galley is the door to the port decks followed by an entertainment center with lots of storage. Large Settee with storage under. The upholstery is navy blue.

- L-Settee with storage underneath
- 2 person settee on port
- Vizio 42" LED TV
- Intellian SAT TV
- Teak table with drop leaves - there is bottle storage underneath
- (2) teak dining chairs
- Grand Banks removable helm chair
- Bar cabinet with (2) drawers and doored storage
- (2) gimbaled brass lamps with shades
- Grunert holding plate refrigeration
- Teak parquet sole
- Teak overhead hand bar
- Mini blinds on all windows
- (2) stereo speakers

Galley

Up-Galley style located on the port side of the Salon. There is a large SS sink with Delta Hot/Cold fresh water faucet with Corian cover. There is a Princess 110v electric 3 burner stove with oven just forward of sink. There is a Grunert refrigerator located under the aft counter with a Grunert freezer located just aft of that. There is an overhead GE microwave oven. Lots of storage over and under the countertop.

- Large stainless steel sink
- White Formica countertops
- Princess electric range - 3 burner with oven
- New microwave (2013)
- New faucets (2013)
- Grunert holding plate refrigerator
- (2) drop down dish lockers
- Tip-out trash locator
- (2) storage cabinets
- 12v galley vent
- Sharp carousel microwave oven
- 12v exhaust fan

Master Stateroom

The Master Stateroom has split berths with the ensuite Head and Shower. Aft is the bureau with drawer storage. To port is a single berth with storage under it, and forward of that is the large storage closet. The ensuite head has its own separate stand up shower.

- Double berth on starboard and twin on port
- Large bureau with (9) drawers for great storage
- (3) Large drawers under each berth
- Hanging locker with louvered teak doors
- Full length mirror with teak frame
- (4) Opening windows with mini blinds
- (2) Brass Grand Banks adjustable reading lights
- (2) Blaupunkt overhead flush mounted stereo speakers
- Teak parquet sole
- Fire extinguisher
- 12v fan
- Custom storage and bookshelf at foot of twin berth
- Fold up ladder to exit cabin
- Opening aft door and hatch with bug screen
- Swing mount and wiring for TV

Master Head:

- Large oval ceramic sink
- New Headhunter head (2013)
- Teak parquet sole
- Formica counter
- Separate stall shower with teak grate over shower well, sump pump and light
- Teak framed mirror
- Electric exhaust vent
- (2) teak towel holders

Navigation & Electronics Equipment

LOWER STATION

- Garmin 4208 GPS/Plotter/Radar
- Datamarine Speed/Distance
- Signet depth with alarm
- Uniden UM380 VHF
- ICOM IC-M700 SSB
- Ritchie compass
- Alpine stereo with CD player
- Teak ships style steering wheel

UPPER STATION

- Garmin 4208 GPS/Plotter/Radar
- Datamarine Speed/Distance
- Signet depth
- Ritchie compass
- Teak ships style steering wheel
- (2) stereo speakers
- Twin Morse gears & throttles
- 12volt plug

Deck and Hull Equipment

- 10' 2004 Zodiac with 15 hp Yamaha outboard
- Switlick 6 person life raft (needs recertification)
- Custom dining table on flybridge
- Fore and aft facing bench seats with beige cushions
- Helm and bench seat with navy blue canvas cover
- Scopinich white leaf table (36x32 open)
- Bimini with navy blue canvas
- SS radar arch
- (2) rod holders
- Teak dinghy chocks
- Winch for mast
- Mast and boom repainted in 2010
- Steadying sail
- (2) spreader lights
- Bell
- Steaming and anchor lights
- Teak cap & hand rails

- Ideal electric windlass
- Delta anchor
- Bronze hausers
- Bronze cleats
- Bronze stanchions
- (2) Hubbell 30 amp connections at bow
- (2) Hubbell 30 amp connections at stern
- Deck box forward
- Lazarette storage
- Teak burgee flag mast
- Wash down at bow - salt water
- Searchlight
- Windshield canvas cover
- Side door window cover
- Transom shower with hot & cold water
- Shore water connection
- Teak swim platform with swim ladder

Engine & Mechanical

Both engines have received major overhaul. Port Engine - 1100 hours ago. Starboard Engine - 300 hours ago. Maintenance records are available.

- Twin Leyland Diesel 200 hp
- Manual fire extinguisher
- Fireboy auto fire suppression system
- Glendinning synchronizer
- Promarine Pro-Sport T20 plus battery charger
- Cable steering
- Bilges painted white Fall 2011
- Engines painted
- New aluminum port fuel tank - duplicated original in 2011
- Starboard fuel tank refurbished in 2011
- Storage cabinet
- Bronze raw water sea strainer
- Water accumulator tank
- Grunert refrigeration compressor
- 20 gallon hot water tank
- (3) 8-D batteries - starting & house - all new Fall 2011
- Borg Warner transmissions - rebuilt
- Michigan props 30x25x3 blades

- 2" stainless steel shaft
- Racor fuel filters
- Macerator

Electrical Equipment

- Westerbeke 7.7 kw generator in sound shield
- Racor filter for genset
- Air conditioning with reverse cycle heat
- AC panel and circuit breakers
- DC panel and circuit breakers
- Newmar Inverter and battery charger
- Starboard engine start battery
- Port engine start battery
- Generator start battery
- Inverter batteries: (6) deep-cycle golf cart batteries
- Shore power cords and adapters
- (2) 30 amp portside shore power connections on bow and stern

Exclusions

Owner's personal belongings.

Disclaimer

The Company offers the details of this vessel or yacht in good faith but cannot guarantee or warrant the accuracy of this information nor warrant the condition of the vessel. A buyer should instruct his representatives, agents, or his surveyors, to investigate such details as the buyer desires validated. This vessel or yacht is offered subject to prior sale, price change, or withdrawal without notice.

PHOTOS

Salon Forward



Steps to Guest Stateroom



Guest Stateroom Forward



Guest/Day Head



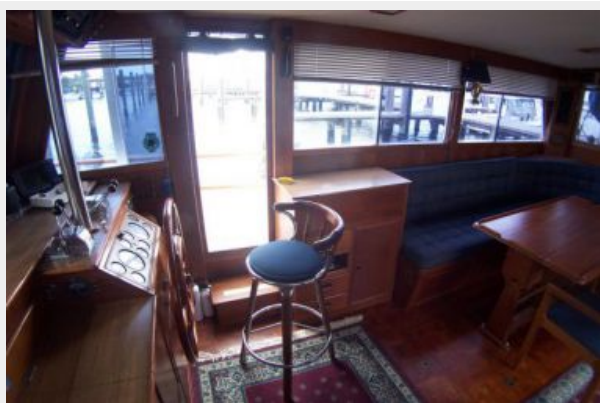
Salon Aft



Lower Helm



Helm Deck Access to Starboard



Galley to Port



3 Burner Electric Stove



Large SS Sink



Dinette to Starboard



Comfortable Dining



Deck Access to Port



Vizio 42' LED TV



Entrance to Master Stateroom and Ensuite Head



Master Stateroom Aft



Single Berth to Port



Double Berth to Starboard



Ensuite Master Head to Starboard



Master Separate Shower



Entrance Open to MSR



Cockpit



Dinghy and Outboard Storage



Flybridge Forward



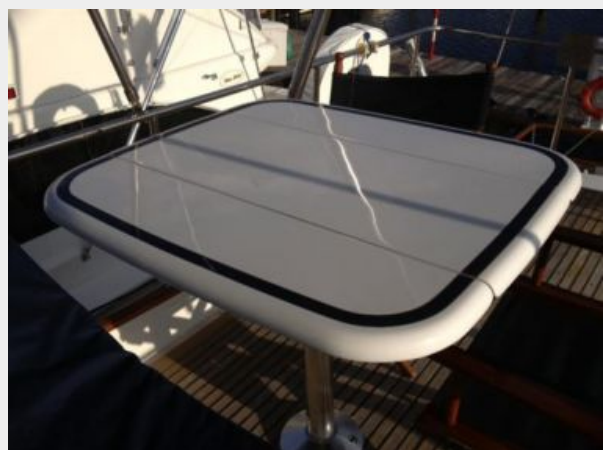
Helm



Gauges and Electronics



Scopinich Flybridge Table Open



Flybridge Aft Deck



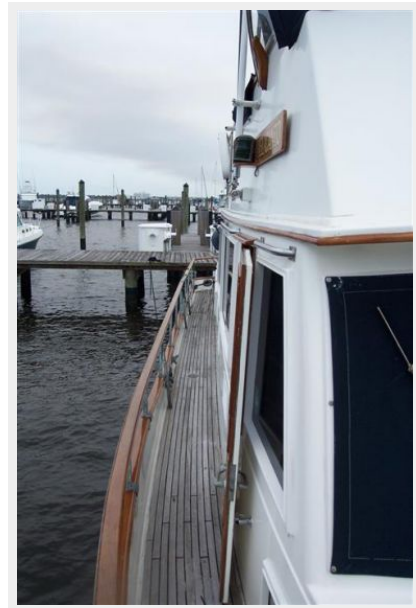
Radar Arch, Mast and Boom



Trunk Cabin View from Flybridge



Wide Side Decks



Switlik Life Raft



Ground Tackle



Cabin and Flybridge View Aft



Port Side Deck Aft



Stern View



Leyland 200 HP Diesel



Raycor Filters



AC Compressor



Port Side Hauled Out



Running Gear



CONTACTS

Andrey Shestakov, leading yacht broker of the sales department of Shestakov Yacht Sales Inc. Shestakov Yacht Sales Inc., the official representative of the Miami/Fort Lauderdale FL headquarters.

Contact details

Email: andrey@shestakovyachtsales.com

Web: shestakovyachtsales.com/en/

Telephones

USA: +1(954)274-4435

Office hours

Monday – Saturday: **9:00 - 21:00** EDT

Sunday: **closed**

Address



Harbour Towne Marina, 850 NE 3rd St,
STE 213, Dania, FL 33004