

## BEL CANTO — GRAND BANKS



**Судостроитель:** GRAND BANKS

**Год постройки:** 1984

**Модель:** Траулер

**Цена:** ЦЕНА ЯХТЫ ПО ЗАПРОСУ

**Местонахождение:** United States

**Длина общая:** 42' 0" (12.80m)

**Ширина:** 13' 7" (4.14m)

**Мин. осадка:** 4' 2" (1.27m)

Купить **BEL CANTO — GRAND BANKS** а также выбрать подходящую вам яхту из нашего каталога яхт вам поможет опытный яхтенный брокер Андрей Шестаков. На сегодняшний день компания **Shestakov Yacht Sales Inc.** имеет большое количество яхт в собственном списке продаж, а также тесно сотрудничает со всеми крупными яхтенными производителями по всему миру.

Для того чтобы купить яхту **BEL CANTO — GRAND BANKS** а также проконсультироваться по любому вопросу связанному с покупкой, продажей, чартером яхт позвоните по телефону **+7(918)465-66-44**.

# ОГЛАВЛЕНИЕ

ОГЛАВЛЕНИЕ	2
ХАРАКТЕРИСТИКИ	5
Обзор	5
Основная информация	5
Размеры	5
Скорость, вместимость и масса	5
Размещение	5
Корпус и палуба	6
Информация о двигателе	6
ПОДРОБНОЕ ОПИСАНИЕ	7
Vessel Walkthrough & Accommodations	7
Guest Stateroom	7
Salon	8
Galley	9
Master Stateroom	9
Navigation & Electronics Equipment	10
Deck and Hull Equipment	10
Engine & Mechanical	11
Electrical Equipment	12
Исключения	12
Отказ от ответственности	12
ФОТОГРАФИИ	13
Steps to Guest Stateroom	13
Salon Forward	13
Guest/Day Head	13
Guest Stateroom Forward	13
Salon Aft	14
Lower Helm	14

Helm Deck Access to Starboard	14
Galley to Port	14
3 Burner Electric Stove	14
Large SS Sink	14
Dinette to Starboard	15
Comfortable Dining	15
Deck Access to Port	15
Vizio 42' LED TV	15
Entrance to Master Stateroom and Ensuite Head	15
Master Stateroom Aft	15
Single Berth to Port	16
Double Berth to Starboard	16
Ensuite Master Head to Starboard	16
Master Separate Shower	16
Entrance Open to MSR	16
Cockpit	16
Dinghy and Outboard Storage	17
Flybridge Forward	17
Helm	17
Gauges and Electronics	17
Scopinich Flybridge Table Open	17
Flybridge Aft Deck	17
Radar Arch, Mast and Boom	18
Trunk Cabin View from Flybridge	18
Wide Side Decks	18
Switlik Life Raft	18
Ground Tackle	19
Cabin and Flybridge View Aft	19
Port Side Deck Aft	19

---

Stern View	19
Leyland 200 HP Diesel	20
Raycor Filters	20
AC Compressor	20
Port Side Hauled Out	20
Running Gear	20
<b>КОНТАКТЫ</b>	<b>21</b>
Контактная информация	21
Телефоны	21
Время работы	21
Адрес	21

# ХАРАКТЕРИСТИКИ

## Обзор

This Grand Banks is ready to cruise! Schedule your showing today!

Located in Stuart, FL just 45 minutes north of West Palm Beach Airport.

## Основная информация

Тип судна: Траулер	Модельный год: 1984
Год постройки: 1984	Страна: United States
Верх: 2353	Открытая палуба мостика: Да
Кубрик: Да	

## Размеры

Длина общая: 42' 0" (12.80m)	Ширина: 13' 7" (4.14m)
Мин. осадка: 4' 2" (1.27m)	

## Скорость, вместимость и масса

Водоизмещение: 35000 Pounds	Вместимость воды: 265 Gallons
Вместимость сточного бака: 50 Gallons	Объем топливного бака: 600 Gallons

## Размещение

Всего кают: 2	Всего коек: 3
Спальные места: 5	Всего ком. состава: 2

## Корпус и палуба

---

**Материал корпуса:** Fiberglass

## Информация о двигателе

---

**Двигатели:** 2

**Производитель:** Leyland

**Модель:** 6TX200

**Тип двигателя:** Inboard

**Тип топлива:** Diesel

---

# ПОДРОБНОЕ ОПИСАНИЕ

---

## Vessel Walkthrough & Accommodations

---

Starting from the forward guest stateroom, there is an ensuite Head to starboard, sink with vanity and medicine cabinet. Also included is a "wet-head" shower. Plenty of light and fresh air is provided by an overhead hatch and two side windows. There is a cedar lined hanging closet to port with a second smaller locker next to it. Sleeping accommodations are provided by a V-berth with ample drawers and storage below. Moving aft we have a set of stairs that lift up for forward access to the engine room.

Up to the main Salon there is the lower helm station to starboard with a full set of electronics for traveling in less than perfect weather. Aft of helm is a day bar with liquor storage. Along the starboard side is a L-shaped settee with a GB teak dining table that can convert from cocktails to dinner for six. There is an entertainment center and storage to port, along with a port-side deck door. There is plenty of storage under settee and in the entertainment center.

On the portside is the full galley including an electric stove and oven. Large single sink, cream Formica counter tops, microwave and lot of storage for pots and pans and all of your cooking needs. Below is a Grunert refrigerator and another Sub-Zero Freezer aft of the port-side door. There is a large entertainment center with plenty of storage to port and a comfortable settee. One of the best features of Grand Banks is the large windows in the Salon providing natural light and ventilation. There are blinds throughout the Salon/ Galley. There is access to the engine room from the main salon with removable floor panels.

Going down three steps is the Master Stateroom. BEL CANTO features a double-sized berth on the starboard side with a single berth to port with a large 9 drawer bureau in between. There is an ensuite Head with a separate shower on the starboard side forward of the double berth. There are two hanging lockers to port. Access to the aft deck thru opening door - great for natural light and ventilation.

---

## Guest Stateroom

---

### Guest Stateroom:

- V-berth with navy upholstery
- Hanging locker with sliding doors
- (6) drawers
- Storage under berth
- (2) brass Grand Banks reading lights
- (2) opening windows
- Small teak bookcase
- Teak parquet sole

- Teak louvered entrance door with sliding hatch
- Steps raise for easy engine access
- Opening hatch
- Anchor locker access
- 12v fan
- Fire extinguisher

### Guest Head:

- Raritan Head (Refit 2013)
- New faucets (2013)
- Large oval porcelain sink
- Formica countertops
- Mini blind over opening window
- Overhead exhaust vent - electric
- Hand held shower fixture
- Teak grate over sump pump shower well
- Large sliding door storage area and drawers

## Salon

---

The Salon has the Galley forward to port and lower helm station to starboard. The starboard door is outboard of the lower helm station and leads to the starboard side deck. Aft of the helm station is the bar with ice-maker, glass and bottle storage, then the dining area with L-settee and Grand Banks drop leaf table. On the port side aft of the Galley is the door to the port decks followed by an entertainment center with lots of storage. Large Settee with storage under. The upholstery is navy blue.

- L-Settee with storage underneath
- 2 person settee on port
- Vizio 42" LED TV
- Intellian SAT TV
- Teak table with drop leaves - there is bottle storage underneath
- (2) teak dining chairs
- Grand Banks removable helm chair
- Bar cabinet with (2) drawers and doored storage
- (2) gimballed brass lamps with shades
- Grunert holding plate refrigeration
- Teak parquet sole
- Teak overhead hand bar
- Mini blinds on all windows
- (2) stereo speakers



---

## Galley

---

Up-Galley style located on the port side of the Salon. There is a large SS sink with Delta Hot/Cold fresh water faucet with Corian cover. There is a Princess 110v electric 3 burner stove with oven just forward of sink. There is a Grunert refrigerator located under the aft counter with a Grunert freezer located just aft of that. There is an overhead GE microwave oven. Lots of storage over and under the countertop.

- Large stainless steel sink
- White Formica countertops
- Princess electric range - 3 burner with oven
- New microwave (2013)
- New faucets (2013)
- Grunert holding plate refrigerator
- (2) drop down dish lockers
- Tip-out trash locator
- (2) storage cabinets
- 12v galley vent
- Sharp carousel microwave oven
- 12v exhaust fan

---

## Master Stateroom

---

The Master Stateroom has split berths with the ensuite Head and Shower. Aft is the bureau with drawer storage. To port is a single berth with storage under it, and forward of that is the large storage closet. The ensuite head has its own separate stand up shower.

- Double berth on starboard and twin on port
- Large bureau with (9) drawers for great storage
- (3) Large drawers under each berth
- Hanging locker with louvered teak doors
- Full length mirror with teak frame
- (4) Opening windows with mini blinds
- (2) Brass Grand Banks adjustable reading lights
- (2) Blaupunkt overhead flush mounted stereo speakers
- Teak parquet sole
- Fire extinguisher
- 12v fan
- Custom storage and bookshelf at foot of twin berth
- Fold up ladder to exit cabin
- Opening aft door and hatch with bug screen
- Swing mount and wiring for TV

---

### Master Head:

- Large oval ceramic sink
- New Headhunter head (2013)
- Teak parquet sole
- Formica counter
- Separate stall shower with teak grate over shower well, sump pump and light
- Teak framed mirror
- Electric exhaust vent
- (2) teak towel holders

## Navigation & Electronics Equipment

---

### LOWER STATION

- Garmin 4208 GPS/Plotter/Radar
- Datamarine Speed/Distance
- Signet depth with alarm
- Uniden UM380 VHF
- ICOM IC-M700 SSB
- Ritchie compass
- Alpine stereo with CD player
- Teak ships style steering wheel

### UPPER STATION

- Garmin 4208 GPS/Plotter/Radar
- Datamarine Speed/Distance
- Signet depth
- Ritchie compass
- Teak ships style steering wheel
- (2) stereo speakers
- Twin Morse gears & throttles
- 12volt plug

## Deck and Hull Equipment

---

- 10' 2004 Zodiac with 15 hp Yamaha outboard
- Switlick 6 person life raft (needs recertification)
- Custom dining table on flybridge
- Fore and aft facing bench seats with beige cushions
- Helm and bench seat with navy blue canvas cover
- Scopinich white leaf table (36x32 open)
- Bimini with navy blue canvas
- SS radar arch
- (2) rod holders
- Teak dinghy chocks
- Winch for mast
- Mast and boom repainted in 2010
- Steadying sail
- (2) spreader lights
- Bell
- Steaming and anchor lights
- Teak cap & hand rails

- Ideal electric windlass
- Delta anchor
- Bronze hausers
- Bronze cleats
- Bronze stanchions
- (2) Hubbell 30 amp connections at bow
- (2) Hubbell 30 amp connections at stern
- Deck box forward
- Lazarette storage
- Teak burgee flag mast
- Wash down at bow - salt water
- Searchlight
- Windshield canvas cover
- Side door window cover
- Transom shower with hot & cold water
- Shore water connection
- Teak swim platform with swim ladder

## Engine & Mechanical

---

Both engines have received major overhaul. Port Engine - 1100 hours ago. Starboard Engine - 300 hours ago. Maintenance records are available.

- Twin Leyland Diesel 200 hp
- Manual fire extinguisher
- Fireboy auto fire suppression system
- Glendinning synchronizer
- Promarine Pro-Sport T20 plus battery charger
- Cable steering
- Bilges painted white Fall 2011
- Engines painted
- New aluminum port fuel tank - duplicated original in 2011
- Starboard fuel tank refurbished in 2011
- Storage cabinet
- Bronze raw water sea strainer
- Water accumulator tank
- Grunert refrigeration compressor
- 20 gallon hot water tank
- (3) 8-D batteries - starting & house - all new Fall 2011
- Borg Warner transmissions - rebuilt
- Michigan props 30x25x3 blades

- 2" stainless steel shaft
- Racor fuel filters
- Macerator

## Electrical Equipment

---

- Westerbeke 7.7 kw generator in sound shield
- Racor filter for genset
- Air conditioning with reverse cycle heat
- AC panel and circuit breakers
- DC panel and circuit breakers
- Newmar Inverter and battery charger
- Starboard engine start battery
- Port engine start battery
- Generator start battery
- Inverter batteries: (6) deep-cycle golf cart batteries
- Shore power cords and adapters
- (2) 30 amp portside shore power connections on bow and stern

## Исключения

---

При продаже яхты исключаются личные вещи владельца.

## Отказ от ответственности

---

Компания предоставляет описание судна или яхты добросовестно, но не может гарантировать точность этой информации, а также не ручается за техническое состояние. Покупатель должен проинструктировать своих агентов или оценщиков исследовать представленную информацию более подробно, по собственному желанию. Продажа судна или яхты, изменение цены или снятие с продажи будет происходить без предварительного уведомления.

# ФОТОГРАФИИ

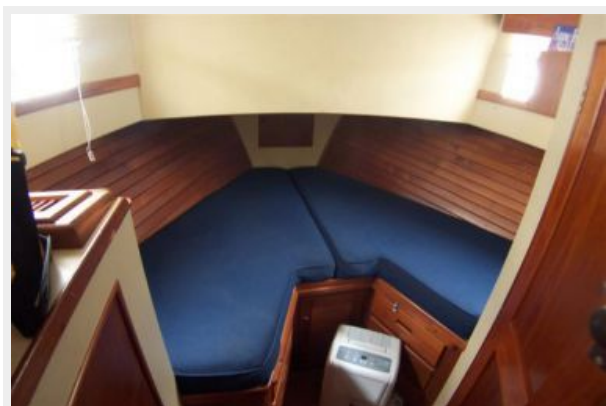
**Salon Forward**



**Steps to Guest Stateroom**



**Guest Stateroom Forward**



**Guest/Day Head**



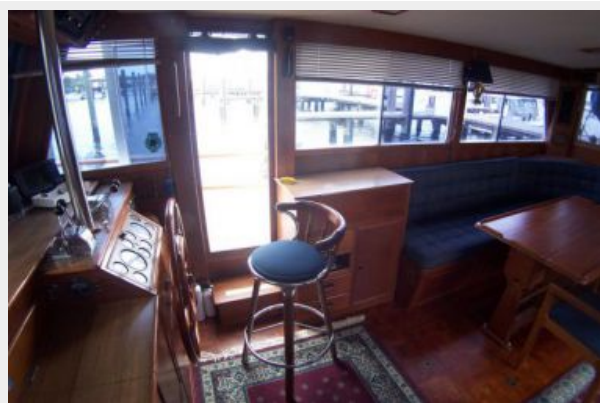
**Salon Aft**



**Lower Helm**



**Helm Deck Access to Starboard**



**Galley to Port**



**3 Burner Electric Stove**



**Large SS Sink**



**Dinette to Starboard**



**Comfortable Dining**



**Deck Access to Port**



**Vizio 42' LED TV**



**Entrance to Master Stateroom and Ensuite Head**



**Master Stateroom Aft**



**Single Berth to Port**



**Double Berth to Starboard**



**Ensuite Master Head to Starboard**



**Master Separate Shower**



**Entrance Open to MSR**



**Cockpit**





### Dinghy and Outboard Storage



### Flybridge Forward



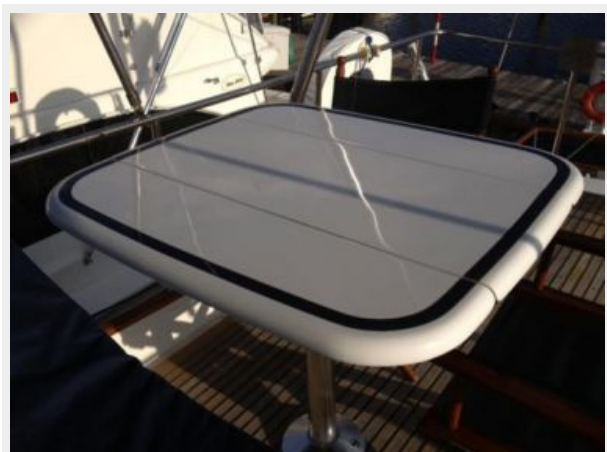
### Helm



### Gauges and Electronics



### Scopinich Flybridge Table Open



### Flybridge Aft Deck



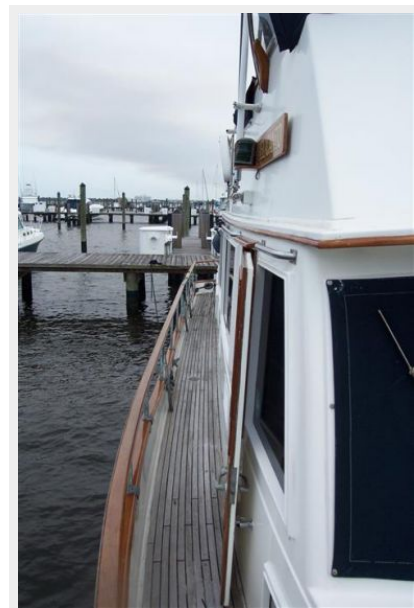
### Radar Arch, Mast and Boom



### Trunk Cabin View from Flybridge



### Wide Side Decks



### Switlik Life Raft



**Ground Tackle**



**Cabin and Flybridge View Aft**



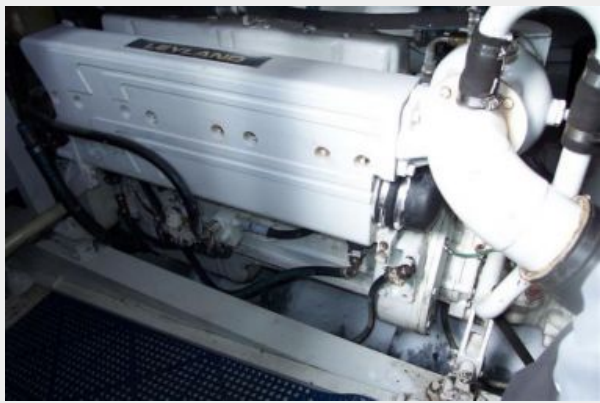
**Port Side Deck Aft**



**Stern View**



**Leyland 200 HP Diesel**



**Raycor Filters**



**AC Compressor**



**Port Side Hauled Out**



**Running Gear**



# КОНТАКТЫ

---

Андрей Шестаков (Andrey Shestakov) – ведущий яхтенный брокер отдела продаж яхт и судов компании Shestakov Yacht Sales Inc. Официальный представитель Shestakov Yacht Sales Inc. для русскоговорящих клиентов в центральном офисе компании в Майами/Форт Лодердейл/Флорида/США.

## Контактная информация

---

Email: [andrey@shestakovyachtsales.com](mailto:andrey@shestakovyachtsales.com)

Web: [shestakovyachtsales.com](http://shestakovyachtsales.com)

## Телефоны

---

Краснодарский край: **+7(918)465-66-44**

США, Майами, Флорида: **+1(954)274-4435**

## Время работы

---

Понедельник – Суббота: **9:00 - 21:00**  
EDT

Воскресенье: **Закрито**

## Адрес

---



Harbour Towne Marina, 850 NE 3rd St,  
STE 213, Dania, FL 33004