

## POLE BENDER — VIKING



**Builder:** VIKING

**Year Built:** 2004

**Model:** Sport Fisherman

**Price:** PRICE ON APPLICATION

**Location:** United States

**LOA:** 45' 0" (13.72m)

**Beam:** 16' 4" (4.98m)

**Min Draft:** 4' 6" (1.37m)

**Cruise Speed:** 29 Kts. (33 MPH)

**Max Speed:** 33 Kts. (38 MPH)

Our experienced yacht broker, Andrey Shestakov, will help you choose and buy a yacht that best suits your needs **Pole Bender — VIKING** from our catalogue. Presently, at Shestakov Yacht Sales Inc., we have a wide variety of yachts available on our sale's list. We also work in close contact with all the big yacht manufacturers from all over the world.

If you would like to buy a yacht **Pole Bender — VIKING** or would like help answering any questions concerning purchasing, selling or chartering a yacht, please call **+1(954)274-4435**

# TABLE OF CONTENTS

TABLE OF CONTENTS	2
SPECIFICATIONS	5
Basic Information	5
Dimensions	5
Speed, Capacities and Weight	5
Accommodations	5
Hull and Deck Information	5
Engine Information	6
DETAILED INFORMATION	7
Pole Bender	7
Vessel Walkthrough	7
Salon	7
Galley	7
Master Stateroom	8
Master Head	8
Electrical Equipment	8
Deck & Hull Equipment	9
Cockpit	9
Electrical	9
Engine Room	10
Fishing Equipment	10
2014 Upgrades	10
Remarks	11
Exclusions	11
Disclaimer	11
PHOTOS	12
Profile	12
Profile	12

Cockpit	12
Running	12
Helm	12
Cockpit	12
Helm	13
Helm	13
Seating	13
Helm Electronics	13
Helm Electronics	13
Helm Electronics	13
Helm Electronics	14
Helm Electronics	14
Tower Electronics	14
Tower Electronics	14
Tower Electronics	14
Tower Electronics	14
Salon	15
Master Stateroom	15
Head	15
Guest Stateroom	15
Guest Stateroom	16
Guest Stateroom	16
Engine Room	16
Engine Room	16
Engine Room	16
<b>CONTACTS</b>	<b>17</b>
Contact details	17
Telephones	17
Office hours	17

---

Address

17

---

# SPECIFICATIONS

---

## Basic Information

---

**Category:** Sport Fisherman

**Sub Category:** Open

**Model Year:** 2004

**Year Built:** 2004

**Country:** United States

**Fly Bridge:** Yes

**Cockpit:** Yes

## Dimensions

---

**LOA:** 45' 0" (13.72m)

**Beam:** 16' 4" (4.98m)

**Min Draft:** 4' 6" (1.37m)

## Speed, Capacities and Weight

---

**Cruise Speed:** 29 Kts. (33 MPH)

**Cruise Speed RPM:** 2050 Kts.

**Max Speed:** 33 Kts. (38 MPH)

**Max Speed RPM:** 2350 Kts.

**Displacement:** 48000 Pounds

**Water Capacity:** 150 Gallons

## Accommodations

---

**Total Cabins:** 2

**Total Heads:** 1

## Hull and Deck Information

---

**Hull Material:** Fiberglass

---

## Engine Information

---

**Engines:** 2

**Manufacturer:** MAN

**Model:** D2840LE407

**Engine Type:** Inboard

**Fuel Type:** Diesel

---

# DETAILED INFORMATION

---

## Pole Bender

---

**1000 hour MAN service completed!** The 45 Express is unparalleled in construction, fit and finish and ride. This vessel has all the right options with an Eskimo ice machine, watermaker, low profile windlass and anchor, electric teaser reels and 10 cylinder MAN's. Maintained by a fastidious captain for an open checkbook owner, she shows beautifully.

## Vessel Walkthrough

---

This 45' Express features a large salon with L-shaped couch to port and a galley to starboard side. The Master Stateroom is forward, and has a Queen Island berth, two hanging lockers, and a private entrance to the full size head with shower. The Stateroom also has a stereo system, TV, and DVD player.

## Salon

---

- Sharp 20" Flatscreen TV
- Sony DVD/VHS player
- Direct TV receiver
- Fusion MS AV 7000 with 4 zones
- Modular S&K watermaker with LCD display and remote at helm
- Amtico flooring
- Storage cabinets
- Dinette table
- Teak cabinetry
- Entertainment system with color TV
- Vinyl headliner
- FM stereo, VCR (VHS), CD/DVD player
- Tempered glass
- L-shaped sofa, convertible
- Full canvas
- Phone outlet
- Stereo speakers

## Galley

---

- Amtico teak and holly flooring
- Single lever hot and cold faucet with
- Garbage disposal

- removable handset
- Corian countertop
- Sink
- Electric range
- Storage cabinets and drawers Exhaust fan
- Water filter
- Water level gauge
- Microwave/convection oven
- Water pump indicator
- Undercounter refrigerator and freezer
- Sharp Carousel Grill to Convection Microwave

---

## Master Stateroom

- Carpeting
- 15" Sharp color flat screen TV
- Storage cabinets and drawers
- Hatch with screen
- Upholstered headboard
- Large walk-around bed with lift top for storage
- Cedar-lined hanging locker
- Stereo speakers

---

## Master Head

- Brass fixtures
- Fiberglass molded full stall shower
- Amtico teak and holly flooring
- Sealand vacuflush head
- Teak on lower vanity cabinet

---

## Electrical Equipment

- New ICOM M604
- ICOM IC-M602 VHF
- Furuno RD-30 depth/speed/temp
- Simrad AP26 Autopilot
- ACR searchlight mounted on hardtop
- TOWER ELECTRONICS:
- New Simrad AP 28
- New Garmin 8215 Plotter/Chip Sounder/Radar
- New Maxwell Windlass control
- Northstar 6000I GPS/Plotter 12"
- Garmin Chip Sounder
- Furuno FCV-1100L video sounder
- Garmin 6' Open Array
- Furuno RD-30
- Moritz panel
- Fusion remote
- Unitionies display for watermaker
- 3 Wipers with control



## Deck & Hull Equipment

---

- Salon door handrail
- (3) custom Murray bros. teak ladder back helm chairs
- Refrigerator and icemaker
- Electronic single lever controls for helm pod
- Custom helm pod
- Rod storage and seating

## Cockpit

---

- (2) under gunnel speakers
- (2) Under water lights
- Rocket Launcher
- Speakers
- Drink box in step
- Recessed fish box
- Storage locker
- Transom coaming with gate
- Transom fish box
- Walk-through transom door
- Fresh water wash down
- Sea water wash down
- Cockpit freezer
- 30,000 BTU helm deck air conditioning
- Dockside electric and water connection
- Engine room access
- (4) Rod holders
- Tackle cabinet, bait center and drawers
- Cable TV and telephone connection

## Electrical

---

- Instrument panel lights
- Voltage Stabilizer Transformer
- Battery disconnect switches
- Engine room lights
- Battery paralleling
- Monitoring system; fire, engine room temp, high bilge water, high exhaust temp, and generator
- Lighting, 24V and 120V circuit breakers, AC master control switch, voltmeter, ampmeter and frequency meter
- Glendinning Cablemaster
- Receptacles, 120V duplex
- Battery charger
- Shakespeare 5018 16'6" VHF antenna
- Start/stop in tower
- Furuno RD-30 digital depth/temp
- Furuno FCV 1100 L color sounder
- Anchor light
- Bilge blowers
- Generator, 17 kw
- Navigation lights
- Heavy duty batteries with fiberglass box
- Bonded electrical

- Color coded and labeled wiring system
- system with ground plate

## Engine Room

---

- 1000 hour MAN service completed 08/2013
- Onan generator with 1965 hours as of 11/2014
- Start/stops
- Oil pump out
- Remote mounted oil filters
- Racors
- Trolling valves
- Fuel system priming pumps 24V

## Fishing Equipment

---

- Garmin 8212, RD30, Simrad AP 28, M504 VHF in tower
- Rocket launcher
- In deck livewell
- (12) Rod holders
- Recessed Electric Teaser reels
- Tuna tower molded top, single tail, 5' gap, radar box on hardtop
- Nav lights port and starboard molded
- Rupp Triple Spreader Outriggers with quick release
- Molded standing platform
- White recessed lights, wired with dimmers
- Red chart lights, recessed
- Twin helm A/C units
- Mia Epoch US8R Reels
- Underwater lights
- Palm Beach Tuna Tower

## 2014 Upgrades

---

- Garmin 8215 at helm
- Garmin 8212 in tower
- New 6' Garman array
- New Simrad AP 28 Autopilots at helm & tower
- New Sirius XM Weather & Radio
- New RD 30 in tower
- New Icom 604 at helm & 504 in tower
- All engine controls networked to Garmin in tower
- New Watermaker, S&K with remote at helm
- Low profile Lewmar Windlass

- Eskimo re-furbished
- New Rudders
- New Rudder bearings
- New bottom paint & wax job 10/14
- Underwater lights (2)
- MAN 1000 hour service 150 hours ago
- 1750 total hours
- Rupp Riggers dropped & coated riggers re-strung with pulleys Stuart Sailfish style
- New baitwell pumps & bilge pumps
- Added separate water discharge line for Eskimo rather than into common drain

---

## Remarks

It is rare that such a flawless example of a 45' Viking Express comes available. The Pole bender shows the care of a meticulous captain and demanding owner. She has been lovingly upgraded with the latest and greatest and shows as new. The seller has found his next Viking and is looking for offers. With her combination of new electronics, new low profile windlass and anchor chute, watermaker, Eskimo, SAT TV, fresh bottom, fresh MAN service, teaser reels, Fusion stereo and an regime of exceptional care, Pole Bender is ready to go! This 45' offers the opportunity to buy the "after" ready to go Viking Express is that truly needs nothing. The Captain keeps a proper log book of all systems and updates. Instead of buying another 45' Viking Express and having survey issues and needing to add equipment, Pole Bender offers a truly first class, well optioned 45' Viking that is ready to go! ***Instead of guessing how much you will have in a boat when you are done adding options, buy the boat that HAS IT ALL!***

---

## Exclusions

Owner's personal belongings.

---

## Disclaimer

The Company offers the details of this vessel or yacht in good faith but cannot guarantee or warrant the accuracy of this information nor warrant the condition of the vessel. A buyer should instruct his representatives, agents, or his surveyors, to investigate such details as the buyer desires validated. This vessel or yacht is offered subject to prior sale, price change, or withdrawal without notice.

# PHOTOS

Profile



Profile



Running



Cockpit



Cockpit



Helm



**Helm**



**Helm**



**Seating**



**Helm Electronics**



**Helm Electronics**



**Helm Electronics**





Helm Electronics



Helm Electronics



Tower Electronics



Tower Electronics



Tower Electronics



Tower Electronics



**Salon**



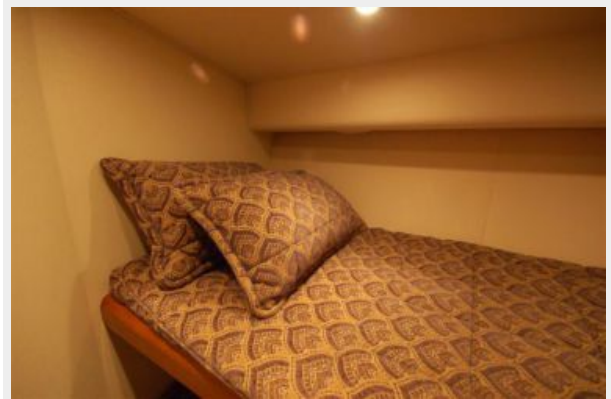
**Master Stateroom**



**Head**



**Guest Stateroom**



**Guest Stateroom**



**Guest Stateroom**



**Engine Room**



**Engine Room**



**Engine Room**





---

# CONTACTS

---

Andrey Shestakov, leading yacht broker of the sales department of Shestakov Yacht Sales Inc. Shestakov Yacht Sales Inc., the official representative of the Miami/Fort Lauderdale FL headquarters.

---

## Contact details

---

Email: [andrey@shestakovyachtsales.com](mailto:andrey@shestakovyachtsales.com)

Web: [shestakovyachtsales.com/en/](http://shestakovyachtsales.com/en/)

---

## Telephones

---

USA: +1(954)274-4435

---

## Office hours

---

Monday – Saturday: **9:00 - 21:00** EDT

Sunday: **closed**

---

## Address

---



Harbour Towne Marina, 850 NE 3rd St,  
STE 213, Dania, FL 33004