

POLE BENDER — VIKING



Судостроитель: VIKING

Год постройки: 2004

Модель: Катер для спортивной рыбалки

Цена: **ЦЕНА ЯХТЫ ПО ЗАПРОСУ**

Местонахождение: United States

Длина общая: 45' 0" (13.72m)

Ширина: 16' 4" (4.98m)

Мин. осадка: 4' 6" (1.37m)

Крейс. скорость: 29 Kts. (33 MPH)

Макс. скорость: 33 Kts. (38 MPH)

Купить Pole Bender — VIKING а также выбрать подходящую вам яхту из нашего каталога яхт вам поможет опытный яхтенный брокер Андрей Шестаков. На сегодняшний день компания Shestakov Yacht Sales Inc. имеет большое количество яхт в собственном списке продаж, а также тесно сотрудничает со всеми крупными яхтенными производителями по всему миру.

Для того чтобы купить яхту Pole Bender — VIKING а также проконсультироваться по любому вопросу связанному с покупкой, продажей, чартером яхт позвоните по телефону **+7(918)465-66-44**.

ОГЛАВЛЕНИЕ

ОГЛАВЛЕНИЕ	2
ХАРАКТЕРИСТИКИ	5
Основная информация	5
Размеры	5
Скорость, вместимость и масса	5
Размещение	5
Корпус и палуба	5
Информация о двигателе	6
ПОДРОБНОЕ ОПИСАНИЕ	7
Pole Bender	7
Vessel Walkthrough	7
Salon	7
Galley	7
Master Stateroom	8
Master Head	8
Electrical Equipment	8
Deck & Hull Equipment	9
Cockpit	9
Electrical	9
Engine Room	10
Fishing Equipment	10
2014 Upgrades	10
Remarks	11
Исключения	11
Отказ от ответственности	11
ФОТОГРАФИИ	12
Profile	12
Profile	12

Cockpit	12
Running	12
Helm	12
Cockpit	12
Helm	13
Helm	13
Seating	13
Helm Electronics	13
Helm Electronics	13
Helm Electronics	13
Helm Electronics	14
Helm Electronics	14
Tower Electronics	14
Tower Electronics	14
Tower Electronics	14
Tower Electronics	14
Salon	15
Master Stateroom	15
Head	15
Guest Stateroom	15
Guest Stateroom	16
Guest Stateroom	16
Engine Room	16
Engine Room	16
Engine Room	16
КОНТАКТЫ	17
Контактная информация	17
Телефоны	17
Время работы	17

Адрес

17

ХАРАКТЕРИСТИКИ

Основная информация

Тип судна: Катер для спортивной рыбалки

Подкатегория: Open

Модельный год: 2004

Год постройки: 2004

Страна: United States

Открытая палуба мостика: Да

Кубрик: Да

Размеры

Длина общая: 45' 0" (13.72m)

Ширина: 16' 4" (4.98m)

Мин. осадка: 4' 6" (1.37m)

Скорость, вместимость и масса

Крейс. скорость: 29 Kts. (33 MPH)

Крейсерская скорость поворота: 2050 Kts.

Макс. скорость: 33 Kts. (38 MPH)

Макс. скорость поворота: 2350 Kts.

Водоизмещение: 48000 Pounds

Вместимость воды: 150 Gallons

Размещение

Всего кают: 2

Всего ком. состава: 1

Корпус и палуба

Материал корпуса: Fiberglass

Информация о двигателе

Двигатели: 2

Производитель: MAN

Модель: D2840LE407

Тип двигателя: Inboard

Тип топлива: Diesel

ПОДРОБНОЕ ОПИСАНИЕ

Pole Bender

1000 hour MAN service completed! The 45 Express is unparalleled in construction, fit and finish and ride. This vessel has all the right options with an Eskimo ice machine, watermaker, low profile windlass and anchor, electric teaser reels and 10 cylinder MAN's. Maintained by a fastidious captain for an open checkbook owner, she shows beautifully.

Vessel Walkthrough

This 45' Express features a large salon with L-shaped couch to port and a galley to starboard side. The Master Stateroom is forward, and has a Queen Island berth, two hanging lockers, and a private entrance to the full size head with shower. The Stateroom also has a stereo system, TV, and DVD player.

Salon

- Sharp 20" Flatscreen TV
- Sony DVD/VHS player
- Direct TV receiver
- Fusion MS AV 7000 with 4 zones
- Modular S&K watermaker with LCD display and remote at helm
- Amtico flooring
- Storage cabinets
- Dinette table
- Teak cabinetry
- Entertainment system with color TV
- Vinyl headliner
- FM stereo, VCR (VHS), CD/DVD player
- Tempered glass
- L-shaped sofa, convertible
- Full canvas
- Phone outlet
- Stereo speakers

Galley

- Amtico teak and holly flooring
- Single lever hot and cold faucet with
- Garbage disposal

- removable handset
- Corian countertop
- Sink
- Electric range
- Storage cabinets and drawers Exhaust fan
- Water filter
- Water level gauge
- Microwave/convection oven
- Water pump indicator
- Undercounter refrigerator and freezer
- Sharp Carousel Grill to Convection Microwave

Master Stateroom

- Carpeting
- 15" Sharp color flat screen TV
- Storage cabinets and drawers
- Hatch with screen
- Upholstered headboard
- Large walk-around bed with lift top for storage
- Cedar-lined hanging locker
- Stereo speakers

Master Head

- Brass fixtures
- Fiberglass molded full stall shower
- Amtico teak and holly flooring
- Sealand vacuflush head
- Teak on lower vanity cabinet

Electrical Equipment

- New ICOM M604
- ICOM IC-M602 VHF
- Furuno RD-30 depth/speed/temp
- Simrad AP26 Autopilot
- ACR searchlight mounted on hardtop
- TOWER ELECTRONICS:
- New Simrad AP 28
- New Garmin 8215 Plotter/Chip Sounder/Radar
- New Maxwell Windlass control
- Northstar 6000I GPS/Plotter 12"
- Garmin Chip Sounder
- Furuno FCV-1100L video sounder
- Garmin 6' Open Array
- Furuno RD-30
- Moritz panel
- Fusion remote
- Unitionies display for watermaker
- 3 Wipers with control

Deck & Hull Equipment

- Salon door handrail
- (3) custom Murray bros. teak ladder back helm chairs
- Refrigerator and icemaker
- Electronic single lever controls for helm pod
- Custom helm pod
- Rod storage and seating

Cockpit

- (2) under gunnel speakers
- (2) Under water lights
- Rocket Launcher
- Speakers
- Drink box in step
- Recessed fish box
- Storage locker
- Transom coaming with gate
- Transom fish box
- Walk-through transom door
- Fresh water wash down
- Sea water wash down
- Cockpit freezer
- 30,000 BTU helm deck air conditioning
- Dockside electric and water connection
- Engine room access
- (4) Rod holders
- Tackle cabinet, bait center and drawers
- Cable TV and telephone connection

Electrical

- Instrument panel lights
- Voltage Stabilizer Transformer
- Battery disconnect switches
- Engine room lights
- Battery paralleling
- Monitoring system; fire, engine room temp, high bilge water, high exhaust temp, and generator
- Lighting, 24V and 120V circuit breakers, AC master control switch, voltmeter, ampmeter and frequency meter
- Glendinning Cablemaster
- Receptacles, 120V duplex
- Battery charger
- Shakespeare 5018 16'6" VHF antenna
- Start/stop in tower
- Furuno RD-30 digital depth/temp
- Furuno FCV 1100 L color sounder
- Anchor light
- Bilge blowers
- Generator, 17 kw
- Navigation lights
- Heavy duty batteries with fiberglass box
- Bonded electrical

- Color coded and labeled wiring system
- system with ground plate

Engine Room

- 1000 hour MAN service completed 08/2013
- Onan generator with 1965 hours as of 11/2014
- Start/stops
- Oil pump out
- Remote mounted oil filters
- Racors
- Trolling valves
- Fuel system priming pumps 24V

Fishing Equipment

- Garmin 8212, RD30, Simrad AP 28, M504 VHF in tower
- Rocket launcher
- In deck livewell
- (12) Rod holders
- Recessed Electric Teaser reels
- Tuna tower molded top, single tail, 5' gap, radar box on hardtop
- Nav lights port and starboard molded
- Rupp Triple Spreader Outriggers with quick release
- Molded standing platform
- White recessed lights, wired with dimmers
- Red chart lights, recessed
- Twin helm A/C units
- Mia Epoch US8R Reels
- Underwater lights
- Palm Beach Tuna Tower

2014 Upgrades

- Garmin 8215 at helm
- Garmin 8212 in tower
- New 6' Garman array
- New Simrad AP 28 Autopilots at helm & tower
- New Sirius XM Weather & Radio
- New RD 30 in tower
- New Icom 604 at helm & 504 in tower
- All engine controls networked to Garmin in tower
- New Watermaker, S&K with remote at helm
- Low profile Lewmar Windlass

- Eskimo re-furbished
- New Rudders
- New Rudder bearings
- New bottom paint & wax job 10/14
- Underwater lights (2)
- MAN 1000 hour service 150 hours ago
- 1750 total hours
- Rupp Riggers dropped & coated riggers re-strung with pulleys Stuart Sailfish style
- New baitwell pumps & bilge pumps
- Added separate water discharge line for Eskimo rather than into common drain

Remarks

It is rare that such a flawless example of a 45' Viking Express comes available. The Pole bender shows the care of a meticulous captain and demanding owner. She has been lovingly upgraded with the latest and greatest and shows as new. The seller has found his next Viking and is looking for offers. With her combination of new electronics, new low profile windlass and anchor chute, watermaker, Eskimo, SAT TV, fresh bottom, fresh MAN service, teaser reels, Fusion stereo and an regime of exceptional care, Pole Bender is ready to go! This 45' offers the opportunity to buy the "after" ready to go Viking Express is that truly needs nothing. The Captain keeps a proper log book of all systems and updates. Instead of buying another 45' Viking Express and having survey issues and needing to add equipment, Pole Bender offers a truly first class, well optioned 45' Viking that is ready to go! ***Instead of guessing how much you will have in a boat when you are done adding options, buy the boat that HAS IT ALL!***

Исключения

При продаже яхты исключаются личные вещи владельца.

Отказ от ответственности

Компания предоставляет описание судна или яхты добросовестно, но не может гарантировать точность этой информации, а также не ручается за техническое состояние. Покупатель должен проинструктировать своих агентов или оценщиков исследовать представленную информацию более подробно, по собственному желанию. Продажа судна или яхты, изменение цены или снятие с продажи будет происходить без предварительного уведомления.

ФОТОГРАФИИ

Profile



Profile



Running



Cockpit



Cockpit



Helm



Helm



Helm



Seating



Helm Electronics



Helm Electronics



Helm Electronics



Helm Electronics



Helm Electronics



Tower Electronics



Tower Electronics



Tower Electronics



Tower Electronics



Salon



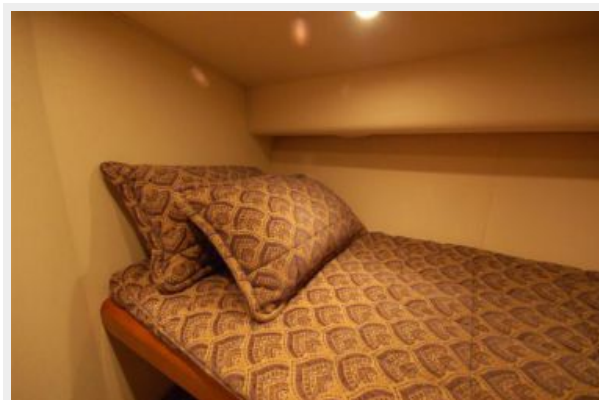
Master Stateroom



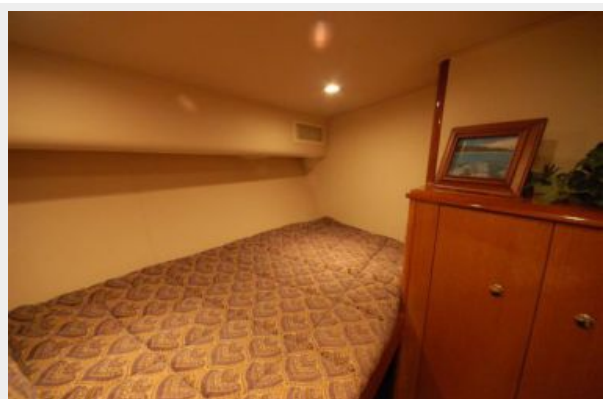
Head



Guest Stateroom



Guest Stateroom



Guest Stateroom



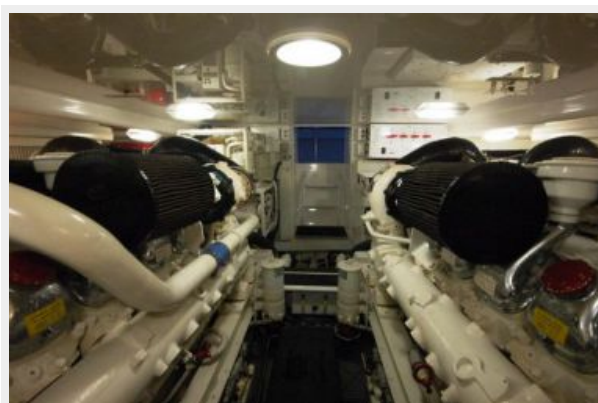
Engine Room



Engine Room



Engine Room



КОНТАКТЫ

Андрей Шестаков (Andrey Shestakov) – ведущий яхтенный брокер отдела продаж яхт и судов компании Shestakov Yacht Sales Inc. Официальный представитель Shestakov Yacht Sales Inc. для русскоговорящих клиентов в центральном офисе компании в Майами/Форт Лодердейл/Флорида/США.

Контактная информация

Email: andrey@shestakovyachtsales.com

Web: shestakovyachtsales.com

Телефоны

Краснодарский край: **+7(918)465-66-44**

США, Майами, Флорида: **+1(954)274-4435**

Время работы

Понедельник – Суббота: **9:00 - 21:00**
EDT

Воскресенье: **Закрито**

Адрес



Harbour Towne Marina, 850 NE 3rd St,
STE 213, Dania, FL 33004