

GOTCHA — CRUSADER



Builder: CRUSADER

Year Built: 1992

Model: Walkaround

Price: PRICE ON APPLICATION

Location: United States

LOA: 34' 0" (10.36m)

Beam: 12' 0" (3.66m)

Max Draft: 3' 6" (1.07m)

Cruise Speed: 20 Kts. (23 MPH)

Max Speed: 22 Kts. (25 MPH)

Our experienced yacht broker, Andrey Shestakov, will help you choose and buy a yacht that best suits your needs **Gotcha — CRUSADER** from our catalogue. Presently, at Shestakov Yacht Sales Inc., we have a wide variety of yachts available on our sale's list. We also work in close contact with all the big yacht manufacturers from all over the world.

If you would like to buy a yacht **Gotcha — CRUSADER** or would like help answering any questions concerning purchasing, selling or chartering a yacht, please call **+1(954)274-4435**

TABLE OF CONTENTS

TABLE OF CONTENTS	2
SPECIFICATIONS	4
Overview	4
Basic Information	4
Dimensions	4
Speed, Capacities and Weight	4
Accommodations	4
Hull and Deck Information	4
Engine Information	5
DETAILED INFORMATION	6
Walkthrough	6
Exclusions	8
Disclaimer	8
PHOTOS	9
Aft Deck	9
Aft Deck	9
Looking Aft from Bow	9
Bow	9
Recessed Walkway	10
Interior	10
Lower Helm	10
Furuno Radar	10
Flybridge Seating	10
Port Helm Deck	10
Upper Helm	11
Port Engine	11
Stern View	11
Engine Room	11

CONTACTS	13
Contact details	13
Telephones	13
Office hours	13
Address	13

SPECIFICATIONS

Overview

GOTCHA has a nice large aft deck and is set up to fish. Circulating bait well installed on swim platform, fish box above deck in cockpit and large Frigibar refrigerator/freezer on helm deck. Small cabin is forward with 4 bunks, separate head and a small galley on port

Basic Information

Category: Walkaround

Model Year: 1992

Year Built: 1992

Country: United States

Dimensions

LOA: 34' 0" (10.36m)

Beam: 12' 0" (3.66m)

Max Draft: 3' 6" (1.07m)

Speed, Capacities and Weight

Cruise Speed: 20 Kts. (23 MPH)

Max Speed: 22 Kts. (25 MPH)

Water Capacity: 75 Gallons

Holding Tank: 10 Gallons

Fuel Capacity: 400 Gallons

Accommodations

Total Cabins: 1

Hull and Deck Information

Hull Material: Fiberglass

Engine Information

Manufacturer: Caterpillar

Model: 3116 TA

Engine Type: Inboard

Fuel Type: Diesel

DETAILED INFORMATION

Walkthrough

GOTCHA has a nice large aft deck and is set up to fish. Circulating bait well installed on swim platform, fish box above deck in cockpit and large Frigibar refrigerator/freezer on helm deck. Small cabin is forward with 4 bunks, separate head and a small galley on port.

AFT DECK

- Large above deck fish box
- Vinyl covered coaming to lean against while fishing
- Transom opening to swim platform
- 13 rod holders
- Panted non-skid deck
- Easy access to forward bow area

FORWARD DECK

- Walk around cabin and recessed side decks
- Fortress anchor
- Bruce anchor on chain & rode
- Aluminum side rails
- Forward deck box
- Bow pulpit

HELM DECK

- Pedestal helm seat
- Stainless steel wheel
- 110V & 12V electrical panel
- Large FrigiBar refrigerator/freezer
- Tackle box storage cabinet
- Electric fan
- Rod storage overhead
- Drop curtains
- 5 opening windows with screens
- Swim ladder stored
- (2) flood lights

ELECTRONICS – LOWER

- Northstar GPS/Loran 800
- Impulse 2801 fish finder
- ICOM MC-M120 VHF radio

- Simrad Robertson AP11 autopilot
- PC-10 Pump Cycle Timer by Croco for circulating bait well
- Lowrance depth sounder
- VDO gauges
- Garmin GPS 152H plotter
- Ritchie compass
- GoLight searchlight control
- Synchronizer for engines
- Morse gears & throttles
- Stereo speakers

ELECTRONICS – UPPER

- Garmin 2010 C GPS Map plotter
- Garmin GPS 152H
- Simrad Robertson AP11 autopilot
- Northstar GPS/Loran 800X
- VDO gauges
- Ritchie compass
- Vetus bow thruster control
- Ritchie compass
- Lowrance depth sounder
- ICOM M 120 VHF radio
- Furuno FCV-585 fishfinder

CABIN & HEAD

- 2 stacked bunks each side forward
- Galley with under counter refrigerator, microwave, 2-burner cooktop, sink and storage cabinet
- Separate head with manual toilet (not functional)
- Air conditioning with reverse cycle heat
- Pioneer stereo/CD and speakers

FLYBRIDGE

- Bimini
- Helm seats & pilot chair cover
- Painted non-skid
- Stainless steel wheel
- Igloo cooler for drinks

MISCELLANEOUS EQUIPMENT AND PARTS

- EPIRB
- Spare parts

- Fire suppressant system in engine room
- Northern Lights generator - 600 hours
- Dripless shaft seals
- Charles battery charger
- Vinylester fiberglass resin to eliminate blisters
- Barrier coated
- Aft deck Bomar water tight hatches

COMMENTS

Crusader Boats are built in Florida mostly for commercial use. They are sturdy and very strongly built to last. GOTCHA is unique as she is a pleasure craft, has a flybridge and is twin diesel. She also is offered for sale by her original owner who oversaw her building.

GOTCHA has been well taken care of. She's offered at a very affordable price and is well equipped.

Exclusions

Owner's personal belongings.

Disclaimer

The Company offers the details of this vessel or yacht in good faith but cannot guarantee or warrant the accuracy of this information nor warrant the condition of the vessel. A buyer should instruct his representatives, agents, or his surveyors, to investigate such details as the buyer desires validated. This vessel or yacht is offered subject to prior sale, price change, or withdrawal without notice.

PHOTOS

Aft Deck



Aft Deck



Looking Aft from Bow

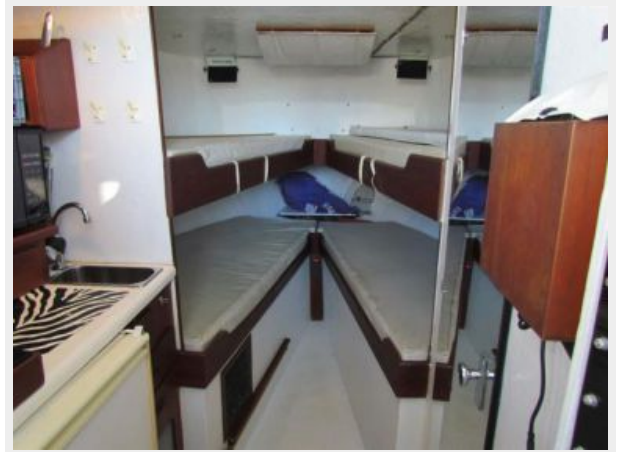
Bow



Recessed Walkway



Interior



Lower Helm



Furuno Radar



Flybridge Seating



Port Helm Deck



Upper Helm



Port Engine



Stern View



Engine Room





CONTACTS

Andrey Shestakov, leading yacht broker of the sales department of Shestakov Yacht Sales Inc. Shestakov Yacht Sales Inc., the official representative of the Miami/Fort Lauderdale FL headquarters.

Contact details

Email: andrey@shestakovyachtsales.com

Web: shestakovyachtsales.com/en/

Telephones

USA: +1(954)274-4435

Office hours

Monday – Saturday: **9:00 - 21:00** EDT

Sunday: **closed**

Address



Harbour Towne Marina, 850 NE 3rd St,
STE 213, Dania, FL 33004