

## SERIOUSLY DERAILED — AZIMUT



**Builder:** AZIMUT

**Year Built:** 2007

**Model:** Motor Yacht

**Price:** PRICE ON APPLICATION

**Location:** United States

**LOA:** 68' 0" (20.73m)

**Beam:** 17' 1" (5.21m)

**Max Draft:** 5' 6" (1.68m)

**Cruise Speed:** 31 Kts. (36 MPH)

Our experienced yacht broker, Andrey Shestakov, will help you choose and buy a yacht that best suits your needs **Seriously Derailed — AZIMUT** from our catalogue. Presently, at Shestakov Yacht Sales Inc., we have a wide variety of yachts available on our sale's list. We also work in close contact with all the big yacht manufacturers from all over the world.

If you would like to buy a yacht **Seriously Derailed — AZIMUT** or would like help answering any questions concerning purchasing, selling or chartering a yacht, please call **+1(954)274-4435**

# TABLE OF CONTENTS

|                              |    |
|------------------------------|----|
| TABLE OF CONTENTS            | 2  |
| SPECIFICATIONS               | 4  |
| Overview                     | 4  |
| Basic Information            | 4  |
| Dimensions                   | 4  |
| Speed, Capacities and Weight | 4  |
| Accommodations               | 4  |
| Hull and Deck Information    | 4  |
| Engine Information           | 5  |
| DETAILED INFORMATION         | 6  |
| Main Deck                    | 6  |
| Salon                        | 6  |
| Galley                       | 7  |
| Master Stateroom             | 7  |
| Master Head                  | 7  |
| VIP Stateroom                | 8  |
| VIP Head                     | 8  |
| Guest Stateroom to Port      | 8  |
| Guest / Day Head             | 9  |
| Stern                        | 9  |
| Deck Equipment               | 10 |
| Bow                          | 10 |
| Mechanical                   | 10 |
| Electrical                   | 10 |
| Electronics                  | 10 |
| Updates                      | 11 |
| Exclusions                   | 11 |
| Disclaimer                   | 11 |

|                 |    |
|-----------------|----|
| PHOTOS          | 12 |
| CONTACTS        | 18 |
| Contact details | 18 |
| Telephones      | 18 |
| Office hours    | 18 |
| Address         | 18 |

# SPECIFICATIONS

## Overview

### Basic Information

|                       |                        |
|-----------------------|------------------------|
| Category: Motor Yacht | Model Year: 2007       |
| Year Built: 2007      | Country: United States |

### Dimensions

|                          |                             |
|--------------------------|-----------------------------|
| LOA: 68' 0" (20.73m)     | Beam: 17' 1" (5.21m)        |
| Max Draft: 5' 6" (1.68m) | MFG Length: 68' 0" (20.73m) |

### Speed, Capacities and Weight

|                                |                            |
|--------------------------------|----------------------------|
| Cruise Speed: 31 Kts. (36 MPH) | Displacement: 69440 Pounds |
| Water Capacity: 251 Gallons    | Fuel Capacity: 845 Gallons |

### Accommodations

|                 |           |
|-----------------|-----------|
| Total Cabins: 3 | Sleeps: 6 |
| Total Heads: 3  |           |

### Hull and Deck Information

Hull Material: Fiberglass

## Engine Information

---

**Engines:** 2

**Manufacturer:** MAN

**Model:** V12

**Engine Type:** Inboard

**Fuel Type:** Diesel

---

# DETAILED INFORMATION

---

## Main Deck

---

- Electrically Adjustable Single Seat for Pilot
- Two-Seater Wheelhouse Bench
- Steering Compartment Wheel in Stainless Steel and Leather, Height Adjustable
- Power Steering
- Handrail
- Wheelhouse Includes: Engine Control Levers, Navigation Instruments, Engine Control Panel, Complete with Acoustic and Optical Alarms, Engine Electronic Ignition Keys with Start and Stop Buttons, Generator Control (in Galley Control Panel), Extractor Switches, Air Intake and Fan Control Switches, Battery Parallel Connection, Compass, Bow Thruster Control, Anchor Winch Control, Trim Tab Controls with Indicators, Windscreen Wiper-Washer Controls.
- Switches for: Electrically Operated Opening Side Windows, Chain Washdown, Instrument Lights, Horn, Alarm Test, Navigation Lights, Alarm Shut-Off, Bilge Pump Control
- Alarms for: Bilge Water, Grey Water Tank High Level, Black Water Tank High Level, Navigation Lights, Anchorage Lights, Shore Sockets, Service Batteries, Engine Batteries, Chain Washdown, Extractors, Fans, Water In Filters, Hydraulic Unit Oil Level, Bathing Ladder, Platform
- Rudder Angle Indicator
- Fuel Level Gauge
- Fresh Water Tank Level Gauge
- Rev. Counter/Hour Counter
- Starboard and Port Engine Coolant Temperature Gauge
- Starboard and Port Engine and Marine Gear Oil Pressure Gauge
- Speedometer in Knots and Mile Counter
- Chain Meter Counter
- 12V Lighter Socket
- Alternator Ammeters and Battery Charger

## Salon

---

- Sofa on Port Side
- Armchair and Cabinet with Glass Top
- Three-Seat Sofa on Starboard Side
- Bar Cabinet with Glass Top
- Table in Wenge with Leaf Top
- Halogen Lighting
- Salon Floor in Wenge with Middle Carpet
- 40 inch Flat Screen Pop Up Television

- Yamaha RX-V2700 Receiver
- Sony DVD Player SR500H

## Galley

---

- New Refrigerator 9/2014
- 220V 4-Burner Ceramic Hob with Fiddle Rail
- GE Microwave Oven and Grill
- Stainless Steel Wotop with (2) Sinks
- Extractor Hood
- Base Cabinets with Drawers, Storage Compartments, and Garbage Bin
- Wenge Wood Wall Cabinets
- Pot Storage Under Sinks
- Wenge Wood Floor
- Cabinet for Dishes, Glasses, and Cutlery Next to Refrigerator Cabinet
- Store Room Below Stairs and Wall Cabinets
- Splendide 5200 Combo Washer/Dryer

## Master Stateroom

---

- Double Bed with Drawer Under
- Double Door Wardrobe in Fore Section
- Wardrobe with Drawers and Raft, Aft
- Panasonic 32" HDTV
- Built-In Drawer Unit on Starboard Side with Two Armchairs and Table
- Radio CD Player with Speakers
- Shading Curtains and (6) Square Portholes
- Wenge Wood Doors and Frames
- Direct Access to Head
- Reading Lights
- Fluorescent Lighting
- Carpeting
- Yamaha Surround Sound with Energy Speaker
- Yamaha DVD Natural Sound Home Theater System

## Master Head

---

- Access from Master Stateroom
- Seperate Shower with Glass Door Equipped with Thermostatic Mixer and Diverter for Double Delivery
- Tecma WC

- Washbasin with Transparent Glass Top (15mm)
- Wenge Wood Shelf Under the Basin
- Bulwark Cabinet with Drawers
- Wenge Wood Floor
- Air Extractor
- Round Porthole
- Venetian Blinds in Wenge Wood Finish

## VIP Stateroom

---

- Double Bed
- Toshiba 15DL TV with SAT Receiver and DVD Player
- Wenge Wood Headboard
- Shelved Above Portholes
- Wardrobe with Drawers on Portside
- (2) Built-In Corner Storage Units
- (2) Round Portholes, 300mm Diameter
- Deck Hatch with Shade and Mosquito Screen
- Reading Lights
- Soft Ceiling Lights
- Fluorescent Lighting
- Carpet

## VIP Head

---

- Access from VIP Stateroom
- Large Round Shower with Plexiglass Doors and Wooden Grating
- Tecma WC
- Shower Column with Soap Holder and Thermostatic Mixer
- Washbasin with Transparent Glass Top (15mm)
- Bulwark Cabinet with Drawers
- Round Porthole
- Floor in Wenge Wood
- Air Extraction
- Venetian Blinds in Wenge Wood Finish

## Guest Stateroom to Port

---

- Twin Beds
- Central Bedside Table with Switches
- Reading light



- Finishing Strip in Wenge
- Built-In Wardrobe with Drawers and Rack
- Round Porthole
- Carpeting
- Fluorescent Lighting
- Diffused Lighting Under Beds
- Drawers Under Bed

## Guest / Day Head

---

- Access from Guest Cabin and from Corridor
- Large Round Shower with Plexiglass Doors and Wooden Grating
- Tecma WC
- Washbasin with Transparent Glass Top
- Bulwark Cabinet with Mirror
- Round Porthole
- Air Extraction
- Venetian Blind in Wenge

## Stern

---

- Saloon Access Four-Wing Door in Tempered Glass
- Tender Storage Compartment
- Garage Hatch with Electro-hydraulic Opening
- Tender Winch Inside Garage
- Williamson Turbojet 2008 12ft with 15 hours
- Acoustic Alarm for Garage Hatch and Platform Maneuvers
- Sundeck in Cockpit with Mobile Back and Stairs to Crew Cabin
- Refrigerator, Sink, Storage Drawer, and Garbage Bin
- Teak Cockpit Table
- Bench, Port Side
- Shower with Hot and Cold Water
- (2) Electric Winches (1000 Watt)
- Cushions on Cockpit Bench and Sundeck
- Lights in Cockpit Cover
- Walkway Lights on Access Steps to Platform and Accessories to Side Walkways
- Steel Cockpit Access Hatch
- Teak Cockpit and Platform Access Steps
- (2) Side Lights on Bathing Platform
- 1.2 m Mobile Bathing Platform with Teak Floor, 450 kg Lifting Capacity
- Boat Hook
- Electric Bimini Room

- Adjustable Electrical Headlamp

## Deck Equipment

---

- (2) Midships Cleats
- Handrails and Accessories in Stainless Steel
- Teak Walkways
- Opening Hard Top with Heatless Glass Windows
- Navigation Lights

## Bow

---

- 1700 W, 24 V Winch
- Chain Winch Controls
- Chain Washdown for Anchor
- (2) Electric Eindscreen Wiper-Washers
- Bow Sundeck Cushions with Glass Holders

## Mechanical

---

- V-12 MANs 1360HP with 318 Hours
- 23 kW Kohler Genset with 300 Hours
- Dual Racor Filters
- ZF Transmission
- Auto Halon System
- Algae Sep Fuel Polishing System
- Reversion Fuel Priming Pumps
- New Headhunter Freshwater Pump with Backup

## Electrical

---

- 23kW Kohler Genset with 300 Hours
- 24 Volt / 80 Amp Battery Charger
- 12 Volt / 10 Amp Battery Charger
- Glendinning Cable Master
- Optima Batteries

## Electronics

---

- Raymarine E-80 GPS and E-120

- Raymarine Auto Pilot
- Raymarine Tri-Data
- Raymarine Radar
- Raymarine 240 VHF
- Raymarine Remote Mic VHF in Cockpit
- KVH SAT TV
- Xentra Joystick Control for Docking

## Updates

---

- **2013:**
- (2) New A/C Compressors 23,000 and 90,000 BTU
- Hull Painted 5/13
- (2) New A/C Raw Water Pumps on Manifold
- **2014:**
- New Headhunter Freshwater Pump 5/14
- New Headliner in Master Stateroom 5/14
- Salon Sofas and Ottomans Reupholstered 5/14
- New Engine Room and Stern Cameras 5/14
- Full Bottom Job 9/14
- New Optima Batteries House and Main 10/14
- 3-Step Detail 10/14
- New Wall Coverings Throughout 11/14
- New Salon Headliner 11/14
- New Salon Carpet 11/14
- New Companionway Carpet 11/14
- Halon and Extinguishers Certified 11/14

## Exclusions

---

Owner's personal belongings.

## Disclaimer

---

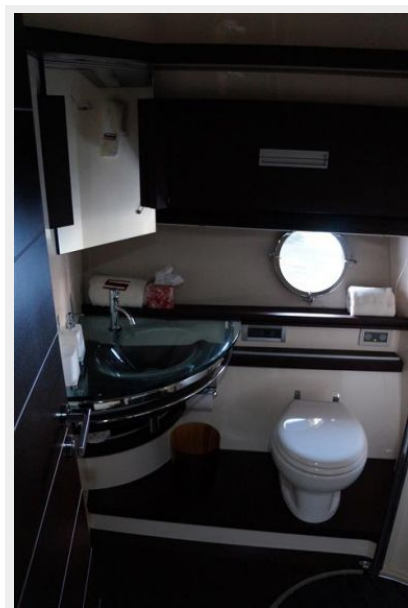
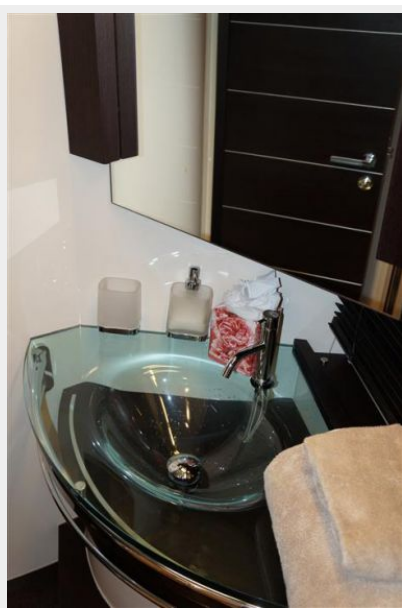
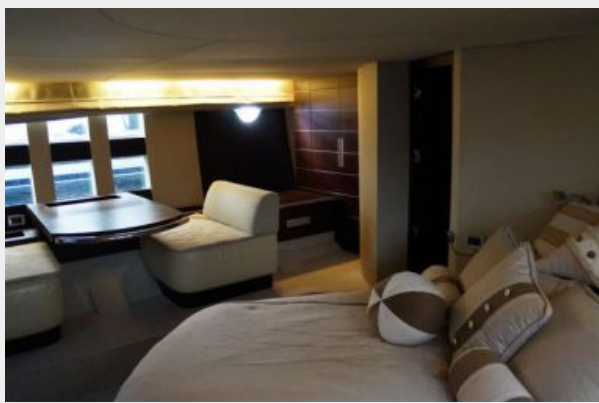
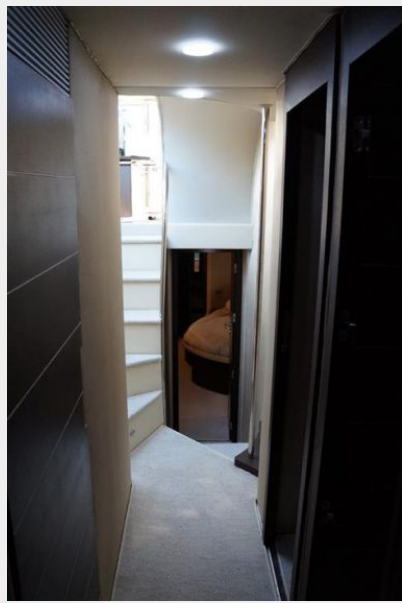
The Company offers the details of this vessel or yacht in good faith but cannot guarantee or warrant the accuracy of this information nor warrant the condition of the vessel. A buyer should instruct his representatives, agents, or his surveyors, to investigate such details as the buyer desires validated. This vessel or yacht is offered subject to prior sale, price change, or withdrawal without notice.

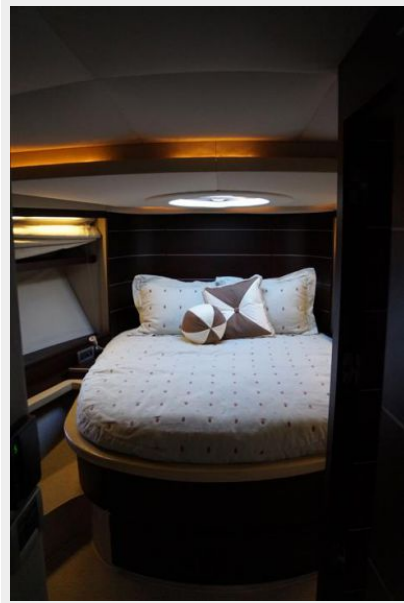
# PHOTOS

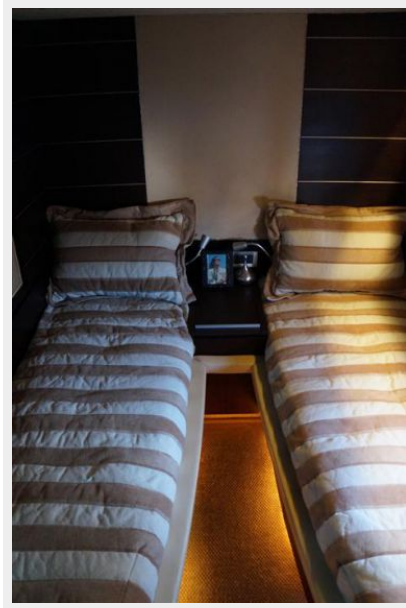
















# CONTACTS

---

Andrey Shestakov, leading yacht broker of the sales department of Shestakov Yacht Sales Inc. Shestakov Yacht Sales Inc., the official representative of the Miami/Fort Lauderdale FL headquarters.

## Contact details

---

Email: **andrey@shestakovyachtsales.com**

Web: [shestakovyachtsales.com/en/](http://shestakovyachtsales.com/en/)

## Telephones

---

USA: **+1(954)274-4435**

## Office hours

---

Monday – Saturday: **9:00 - 21:00 EDT**

Sunday: **closed**

## Address

---



Harbour Towne Marina, 850 NE 3rd St,  
STE 213, Dania, FL 33004