

SERIOUSLY DERAILED — AZIMUT



Судостроитель: AZIMUT

Год постройки: 2007

Модель: Моторная яхта

Цена: ЦЕНА ЯХТЫ ПО ЗАПРОСУ

Местонахождение: United States

Длина общая: 68' 0" (20.73m)

Ширина: 17' 1" (5.21m)

Макс. осадка: 5' 6" (1.68m)

Крейс. скорость: 31 Kts. (36 MPH)

Купить **Seriously Derailed — AZIMUT** а также выбрать подходящую вам яхту из нашего каталога яхт вам поможет опытный яхтенный брокер Андрей Шестаков. На сегодняшний день компания **Shestakov Yacht Sales Inc.** имеет большое количество яхт в собственном списке продаж, а также тесно сотрудничает со всеми крупными яхтенными производителями по всему миру.

Для того чтобы купить яхту **Seriously Derailed — AZIMUT** а также проконсультироваться по любому вопросу связанному с покупкой, продажей, чартером яхт позвоните по телефону **+7(918)465-66-44**.

ОГЛАВЛЕНИЕ

ОГЛАВЛЕНИЕ	2
ХАРАКТЕРИСТИКИ	4
Обзор	4
Основная информация	4
Размеры	4
Скорость, вместимость и масса	4
Размещение	4
Корпус и палуба	4
Информация о двигателе	5
ПОДРОБНОЕ ОПИСАНИЕ	6
Main Deck	6
Salon	6
Galley	7
Master Stateroom	7
Master Head	7
VIP Stateroom	8
VIP Head	8
Guest Stateroom to Port	8
Guest / Day Head	9
Stern	9
Deck Equipment	10
Bow	10
Mechanical	10
Electrical	10
Electronics	10
Updates	11
Исключения	11
Отказ от ответственности	11

ФОТОГРАФИИ	12
КОНТАКТЫ	18
Контактная информация	18
Телефоны	18
Время работы	18
Адрес	18

ХАРАКТЕРИСТИКИ

Обзор

Основная информация

Тип судна: Моторная яхта

Модельный год: 2007

Год постройки: 2007

Страна: United States

Размеры

Длина общая: 68' 0" (20.73m)

Ширина: 17' 1" (5.21m)

Макс. осадка: 5' 6" (1.68m)

Длина привального бруса: 68' 0"
(20.73m)

Скорость, вместимость и масса

Крейс. скорость: 31 Kts. (36 MPH)

Водоизмещение: 69440 Pounds

Вместимость воды: 251 Gallons

Объем топливного бака: 845 Gallons

Размещение

Всего кают: 3

Спальные места: 6

Всего ком. состава: 3

Корпус и палуба

Материал корпуса: Fiberglass

Информация о двигателе

Двигатели: 2

Производитель: MAN

Модель: V12

Тип двигателя: Inboard

Тип топлива: Diesel

ПОДРОБНОЕ ОПИСАНИЕ

Main Deck

- Electrically Adjustable Single Seat for Pilot
- Two-Seater Wheelhouse Bench
- Steering Compartment Wheel in Stainless Steel and Leather, Height Adjustable
- Power Steering
- Handrail
- Wheelhouse Includes: Engine Control Levers, Navigation Instruments, Engine Control Panel, Complete with Acoustic and Optical Alarms, Engine Electronic Ignition Keys with Start and Stop Buttons, Generator Control (in Galley Control Panel), Extractor Switches, Air Intake and Fan Control Switches, Battery Parallel Connection, Compass, Bow Thruster Control, Anchor Winch Control, Trim Tab Controls with Indicators, Windscreen Wiper-Washer Controls.
- Switches for: Electrically Operated Opening Side Windows, Chain Washdown, Instrument Lights, Horn, Alarm Test, Navigation Lights, Alarm Shut-Off, Bilge Pump Control
- Alarms for: Bilge Water, Grey Water Tank High Level, Black Water Tank High Level, Navigation Lights, Anchorage Lights, Shore Sockets, Service Batteries, Engine Batteries, Chain Washdown, Extractors, Fans, Water In Filters, Hydraulic Unit Oil Level, Bathing Ladder, Platform
- Rudder Angle Indicator
- Fuel Level Gauge
- Fresh Water Tank Level Gauge
- Rev. Counter/Hour Counter
- Starboard and Port Engine Coolant Temperature Gauge
- Starboard and Port Engine and Marine Gear Oil Pressure Gauge
- Speedometer in Knots and Mile Counter
- Chain Meter Counter
- 12V Lighter Socket
- Alternator Ammeters and Battery Charger

Salon

- Sofa on Port Side
- Armchair and Cabinet with Glass Top
- Three-Seat Sofa on Starboard Side
- Bar Cabinet with Glass Top
- Table in Wenge with Leaf Top
- Halogen Lighting
- Salon Floor in Wenge with Middle Carpet
- 40 inch Flat Screen Pop Up Television

- Yamaha RX-V2700 Receiver
- Sony DVD Player SR500H

Galley

- New Refrigerator 9/2014
- 220V 4-Burner Ceramic Hob with Fiddle Rail
- GE Microwave Oven and Grill
- Stainless Steel Wortop with (2) Sinks
- Extractor Hood
- Base Cabinets with Drawers, Storage Compartments, and Garbage Bin
- Wenge Wood Wall Cabinets
- Pot Storage Under Sinks
- Wenge Wood Floor
- Cabinet for Dishes, Glasses, and Cutlery Next to Refrigerator Cabinet
- Store Room Below Stairs and Wall Cabinets
- Splendide 5200 Combo Washer/Dryer

Master Stateroom

- Double Bed with Drawer Under
- Double Door Wardrobe in Fore Section
- Wardrobe with Drawers and Raft, Aft
- Panasonic 32" HDTV
- Built-In Drawer Unit on Starboard Side with Two Armchairs and Table
- Radio CD Player with Speakers
- Shading Curtains and (6) Square Portholes
- Wenge Wood Doors and Frames
- Direct Access to Head
- Reading Lights
- Fluorescent Lighting
- Carpeting
- Yamaha Surround Sound with Energy Speaker
- Yamaha DVD Natural Sound Home Theater System

Master Head

- Access from Master Stateroom
- Seperate Shower with Glass Door Equipped with Thermostatic Mixer and Diverter for Double Delivery
- Tecma WC

- Washbasin with Transparent Glass Top (15mm)
- Wenge Wood Shelf Under the Basin
- Bulwark Cabinet with Drawers
- Wenge Wood Floor
- Air Extractor
- Round Porthole
- Venetian Blinds in Wenge Wood Finish

VIP Stateroom

- Double Bed
- Toshiba 15DL TV with SAT Receiver and DVD Player
- Wenge Wood Headboard
- Shelved Above Portholes
- Wardrobe with Drawers on Portside
- (2) Built-In Corner Storage Units
- (2) Round Portholes, 300mm Diameter
- Deck Hatch with Shade and Mosquito Screen
- Reading Lights
- Soft Ceiling Lights
- Fluorescent Lighting
- Carpet

VIP Head

- Access from VIP Stateroom
- Large Round Shower with Plexiglass Doors and Wooden Grating
- Tecma WC
- Shower Column with Soap Holder and Thermostatic Mixer
- Washbasin with Transparent Glass Top (15mm)
- Bulwark Cabinet with Drawers
- Round Porthole
- Floor in Wenge Wood
- Air Extraction
- Venetian Blinds in Wenge Wood Finish

Guest Stateroom to Port

- Twin Beds
- Central Bedside Table with Switches
- Reading light

- Finishing Strip in Wenge
- Built-In Wardrobe with Drawers and Rack
- Round Porthole
- Carpeting
- Fluorescent Lighting
- Diffused Lighting Under Beds
- Drawers Under Bed

Guest / Day Head

- Access from Guest Cabin and from Corridor
- Large Round Shower with Plexiglass Doors and Wooden Grating
- Tecma WC
- Washbasin with Transparent Glass Top
- Bulwark Cabinet with Mirror
- Round Porthole
- Air Extraction
- Venetian Blind in Wenge

Stern

- Saloon Access Four-Wing Door in Tempered Glass
- Tender Storage Compartment
- Garage Hatch with Electro-hydraulic Opening
- Tender Winch Inside Garage
- Williamson Turbojet 2008 12ft with 15 hours
- Acoustic Alarm for Garage Hatch and Platform Maneuvers
- Sundeck in Cockpit with Mobile Back and Stairs to Crew Cabin
- Refrigerator, Sink, Storage Drawer, and Garbage Bin
- Teak Cockpit Table
- Bench, Port Side
- Shower with Hot and Cold Water
- (2) Electric Winches (1000 Watt)
- Cushions on Cockpit Bench and Sundeck
- Lights in Cockpit Cover
- Walkway Lights on Access Steps to Platform and Accessories to Side Walkways
- Steel Cockpit Access Hatch
- Teak Cockpit and Platform Access Steps
- (2) Side Lights on Bathing Platform
- 1.2 m Mobile Bathing Platform with Teak Floor, 450 kg Lifting Capacity
- Boat Hook
- Electric Bimini Room

- Adjustable Electrical Headlamp

Deck Equipment

- (2) Midships Cleats
- Handrails and Accessories in Stainless Steel
- Teak Walkways
- Opening Hard Top with Heatless Glass Windows
- Navigation Lights

Bow

- 1700 W, 24 V Winch
- Chain Winch Controls
- Chain Washdown for Anchor
- (2) Electric Eindscreen Wiper-Washers
- Bow Sundeck Cushions with Glass Holders

Mechanical

- V-12 MANs 1360HP with 318 Hours
- 23 kW Kohler Genset with 300 Hours
- Dual Racor Filters
- ZF Transmission
- Auto Halon System
- Algae Sep Fuel Polishing System
- Reversion Fuel Priming Pumps
- New Headhunter Freshwater Pump with Backup

Electrical

- 23kW Kohler Genset with 300 Hours
- 24 Volt / 80 Amp Battery Charger
- 12 Volt / 10 Amp Battery Charger
- Glendinning Cable Master
- Optima Batteries

Electronics

- Raymarine E-80 GPS and E-120

- Raymarine Auto Pilot
- Raymarine Tri-Data
- Raymarine Radar
- Raymarine 240 VHF
- Raymarine Remote Mic VHF in Cockpit
- KVH SAT TV
- Xentra Joystick Control for Docking

Updates

- **2013:**
- (2) New A/C Compressors 23,000 and 90,000 BTU
- Hull Painted 5/13
- (2) New A/C Raw Water Pumps on Manifold
- **2014:**
- New Headhunter Freshwater Pump 5/14
- New Headliner in Master Stateroom 5/14
- Salon Sofas and Ottomans Reupholstered 5/14
- New Engine Room and Stern Cameras 5/14
- Full Bottom Job 9/14
- New Optima Batteries House and Main 10/14
- 3-Step Detail 10/14
- New Wall Coverings Throughout 11/14
- New Salon Headliner 11/14
- New Salon Carpet 11/14
- New Companionway Carpet 11/14
- Halon and Extinguishers Certified 11/14

Исключения

При продаже яхты исключаются личные вещи владельца.

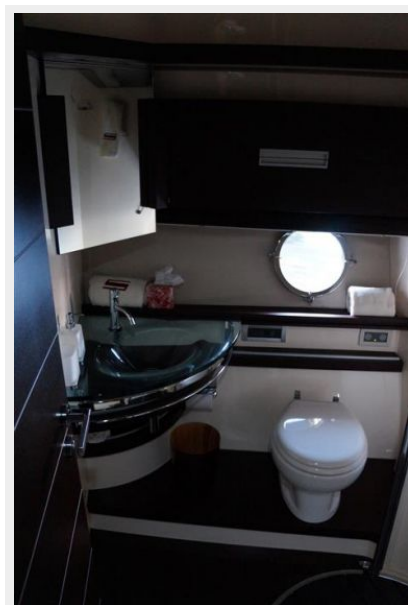
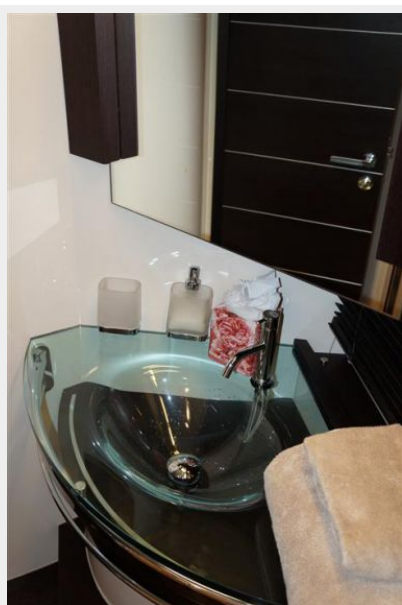
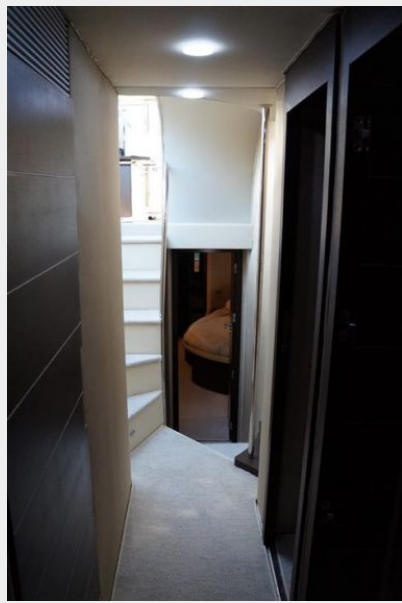
Отказ от ответственности

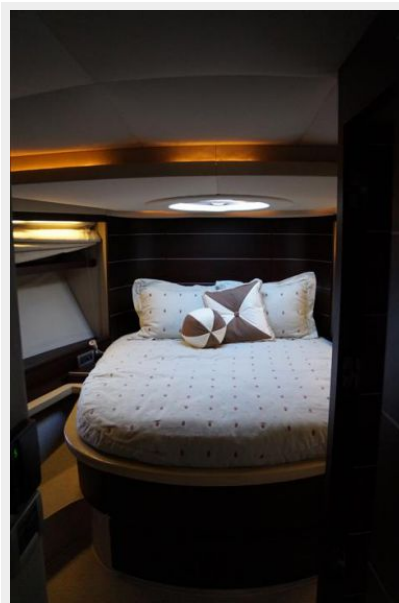
Компания предоставляет описание судна или яхты добросовестно, но не может гарантировать точность этой информации, а также не ручается за техническое состояние. Покупатель должен проинструктировать своих агентов или оценщиков исследовать представленную информацию более подробно, по собственному желанию. Продажа судна или яхты, изменение цены или снятие с продажи будет происходить без предварительного уведомления.

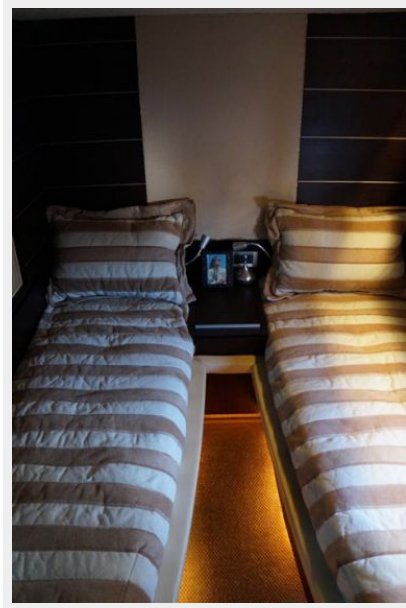
ФОТОГРАФИИ

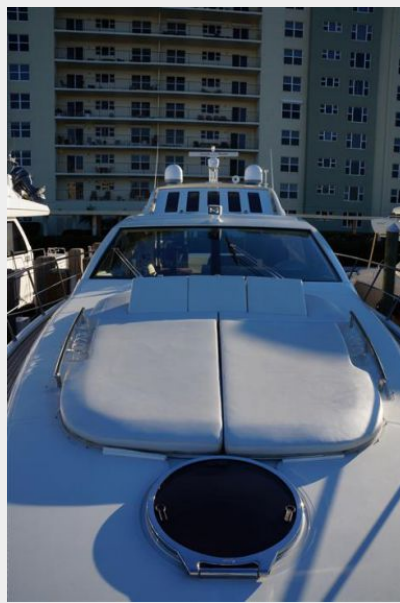












КОНТАКТЫ

Андрей Шестаков (Andrey Shestakov) – ведущий яхтенный брокер отдела продаж яхт и судов компании Shestakov Yacht Sales Inc. Официальный представитель Shestakov Yacht Sales Inc. для русскоговорящих клиентов в центральном офисе компании в Майами/Форт Лодердейл/Флорида/США.

Контактная информация

Email: andrey@shestakovyachtsales.com

Web: shestakovyachtsales.com

Телефоны

Краснодарский край: **+7(918)465-66-44**

США, Майами, Флорида: **+1(954)274-4435**

Время работы

Понедельник – Суббота: **9:00 - 21:00**
EDT

Воскресенье: **Закрито**

Адрес



Harbour Towne Marina, 850 NE 3rd St,
STE 213, Dania, FL 33004