

"STOP THE PRESS" — HATTERAS



Судостроитель: HATTERAS

Год постройки: 2013

Модель: Катер для спортивной рыбалки

Цена: **ЦЕНА ЯХТЫ ПО ЗАПРОСУ**

Местонахождение: United States

Длина общая: 54' 0" (16.46m)

Ширина: 17' 3" (5.26m)

Мин. осадка: 4' 2" (1.27m)

Макс. осадка: 4' 2" (1.27m)

Крейс. скорость: 34 Kts. (39 MPH)

Макс. скорость: 42 Kts. (48 MPH)

Купить "Stop The Press" — HATTERAS а также выбрать подходящую вам яхту из нашего каталога яхт вам поможет опытный яхтенный брокер Андрей Шестаков. На сегодняшний день компания Shestakov Yacht Sales Inc. имеет большое количество яхт в собственном списке продаж, а также тесно сотрудничает со всеми крупными яхтенными производителями по всему миру.

Для того чтобы купить яхту "Stop The Press" — HATTERAS а также проконсультироваться по любому вопросу связанному с покупкой, продажей, чартером яхт позвоните по телефону **+7(918)465-66-44**.

ОГЛАВЛЕНИЕ

ОГЛАВЛЕНИЕ	2
ХАРАКТЕРИСТИКИ	4
Обзор	4
Основная информация	4
Размеры	4
Скорость, вместимость и масса	5
Размещение	5
Корпус и палуба	5
Информация о двигателе	5
ПОДРОБНОЕ ОПИСАНИЕ	6
Description	6
Upgrades at a Glance	6
Exterior Details	7
Interior Details	8
Exterior Finish and Construction	8
Hardware and Miscellaneous	9
Electrical Systems	10
Flybridge	11
Cockpit	11
Engine Compartment and Bilge	12
Salon	14
Galley and Dinette	14
Companionway	15
Master Stateroom	15
Bow VIP Stateroom	16
Starboard Guest Stateroom	17
Master Head	18
Guest Head	18

Исключения	19
Отказ от ответственности	19
ФОТОГРАФИИ	20
КОНТАКТЫ	28
Контактная информация	28
Телефоны	28
Время работы	28
Адрес	28

ХАРАКТЕРИСТИКИ

Обзор

Price Reduced to \$1,599,000 THIS IS AN EXCELLENT OPPORTUNITY TO OWN A LIGHTLY USED HATTERAS GT! CAT C-32 Power, 34kt Cruise, 42kt Top End

Bow and Stern Thruster

Yacht Controller

Watermaker and Ice Chipper

Full Garmin Electronics Suite, FLIR, SAT TV and More

This GT54 Has All the Options and is Ready for Action!

Основная информация

Тип судна: Катер для спортивной рыбалки

Подкатегория: Convertible

Модельный год: 2013

Год постройки: 2013

Страна: United States

Кубрик: Да

Размеры

Длина общая: 54' 0" (16.46m)

Длина по ватерлинии: 47' 7" (14.50m)

Ширина: 17' 3" (5.26m)

Мин. осадка: 4' 2" (1.27m)

Макс. осадка: 4' 2" (1.27m)

Трапы: 14' 8" (4.47m)

Скорость, вместимость и масса

Крейс. скорость: 34 Kts. (39 MPH)	Крейсерская скорость поворота: 1900 Kts.
Макс. скорость: 42 Kts. (48 MPH)	Макс. скорость поворота: 2300 Kts.
Водоизмещение: 75000 Pounds	Вместимость воды: 180 Gallons
Вместимость сточного бака: 95 Gallons	Объем топливного бака: 1200 Gallons

Размещение

Всего кают: 3	Всего коек: 4
Спальные места: 6	Всего ком. состава: 2

Корпус и палуба

Материал корпуса: Fiberglass	Материал палубы: Fiberglass Sandwich
Комплектация корпуса: Modified V-Hull	Цвет корпуса: Cloud White
Отделка корпуса: Polyethylene	Дизайнер корпуса: Hatteras Yachts
Дизайнер экстерьера: Hatteras Design Team	Дизайнер интерьера: Hatteras Yachts

Информация о двигателе

Двигатели: 2	Производитель: Caterpillar
Модель: C-32A	Тип двигателя: Inboard
Тип топлива: Diesel	

ПОДРОБНОЕ ОПИСАНИЕ

Description

The Hatteras GT54 is the lightest, quickest and most nimble member of the new GT Series. Whether in the hunt for a trophy, or simply enjoying a fast day on the water, the GT54 delivers big. Performance and styling are equally important to the tournament fisherman, and the GT54 is designed for that customer. With over 50 years of experience building premium sport fishing convertibles, Hatteras has an unrivaled amount of knowledge when it comes to discerning the preferences of convertible owners.

The look of the GT54 is based on a traditional Carolina-style sport fisherman with updated and refined lines. The bow flare is dynamic, the bow rake is dramatic, and the long foredeck is carefully balanced against the low deckhouse. The lines are timeless. One of the most elegant elements of the styling is the tumblehome aft, a unique feature on production boats of this size.

Upgrades at a Glance

- CAT C-32 Engines 1600HP each (in lieu of 1100HP) **UPGRADE**
- Pipewelders Hardtop With 3 Sided Enclosure **UPGRADE**
- Pipewelders Brushed Aluminum Bow Rail **UPGRADE**
- Vetus Bow Thruster, 24V w/Independent Battery Bank and Charger **UPGRADE**
- (3) Garmin 8215 15" Touchscreen Chartplotters **UPGRADE**
- Garmin High Definition 72NM 6' Array Radar **UPGRADE**
- Garmin In-Hull Transducer, 2kW **UPGRADE**
- Garmin Smartpilot Autopilot GHP20 **UPGRADE**
- XM Satellite Weather for Chartplotters **UPGRADE**
- (3) Raymarine CAM100 Day/Night High Resolution Engine Room Cameras **UPGRADE**
- ACR Remote Spotlight **UPGRADE**
- FLIR Night Vision Camera **UPGRADE**
- KVH Tracvision M7 SAT TV **UPGRADE**
- Latham Camera in Cockpit with Recording Apparatus and Salon TV Display **UPGRADE**
- ICOM VHF Radio **UPGRADE**
- Chartplotter Connection to Salon TV **UPGRADE**
- Offshore Commander 6 Person Liferaft **UPGRADE**
- Cherry Satin Interior Wood **UPGRADE**
- Flybridge Teak Accent Strip **UPGRADE**
- Port Cockpit In-Deck Fishbox Livewell **UPGRADE**
- Bow Deck Freshwater Washdown **UPGRADE**
- Cockpit Under-Coaming Lights **UPGRADE**
- Bow Stateroom TV/DVD/Stereo Entertainment Center **UPGRADE**
- Starboard Stateroom TV/DVD/Stereo Entertainment Center **UPGRADE**
- Salon Aft Entry Amtico Flooring **UPGRADE**

- Seavision Underwater Lights (2) **UPGRADE**
- Master Head Mirrored Ceiling **UPGRADE**
- Guest Head Starboard Ceiling **UPGRADE**
- Pre-Wiring for Watermaker (Watermaker Not Included) **UPGRADE**
- Port and Starboard Cockpit Wing Board Rod Holders (3 Each Side) **UPGRADE**

Exterior Details

This exciting boat is the lightest, fastest, and most nimble of the Hatteras GT fleet. Whether in the hunt for a trophy, or simply enjoying a day on the water, the GT54 delivers big.

With over 50 years of experience building premium production convertibles, Hatteras has an unrivaled amount of knowledge when it comes to discerning the preferences of serious anglers. We know that both performance and styling are equally important to the tournament fisherman, and the new GT54 is designed for that customer. To that end, the GT54 has tournament-class fishing features and functionality, and is a great choice for the more casual owner/operator who appreciates the style and performance efficiencies of a true Carolina-built convertible.

The look of the GT54 is based on a traditional Carolina-style sport fisherman with updated and refined lines. The bow flare is dynamic, the rake of the bow more dramatic than what is typically found on production boats, and the long foredeck is carefully balanced against the low deckhouse. The lines are timeless. One of the most elegant style elements is the tumblehome aft, a unique feature on a production build of this size.

The cockpit was designed for enhanced fishing and increased comfort. The mezzanine seat is one of the most ergonomic around, thanks to a sloped backrest, armrests and premium upholstery. Cup holders and an entertainment system are nearby. When it's time to get down to the business of fishing, there are in-deck fish boxes, a mounting plate for a fighting chair in the cockpit sole, and an optional recirculating live well at the transom. Stowage is excellent, with dedicated compartments for gaffs and boat hooks along with standard accommodations for rods. Teak is available for the coaming boards, cockpit sole and toerail for those who want to play up the GT54 distinct style.

While the look above the waterline is new for Hatteras in a boat this size, the shape below is familiar. The GT54 is based on the builder's proven variable deadrise hull with a convex bow that minimizes the impact of seas in a variety of offshore conditions. Hatteras was the first builder to employ a convex bow on a variable deadrise hull and also pioneered the use of deep prop pockets in sportfishing convertibles.

The GT54 also boasts a resin-infused hull, a construction technique we are constantly improving upon. The resin infusion process improves the stiffness and durability of the hull, providing increased strength while allowing the boat to be much lighter than a traditional hand-laid vessel. The end result is great performance: the GT54 has a top end speed of 41-knots and 37 at cruise with 1600-bhp Caterpillar 32A diesels. The lighter weight made possible by the resin-infused hull

reduces fuel burn and provides range of 400 nautical miles at cruise.

Interior Details

Hatteras is not a company to chase trends, so when designing the interior of the GT54 it didn't go ultra contemporary. The décor is best defined as traditional taken to the next level. The salon and galley are on one level for an open space with excellent traffic flow. Cabinetry is carefully placed to provide a panoramic 270-degree view out of the large windows. Custom furniture, including an L-shaped dinette and salon sofa, is finely crafted and offers ample storage for extended voyages.

On the accommodations level there's a well-appointed VIP stateroom forward, a luxurious master suite amidship to port and a third stateroom to starboard with comfortable side-by-side berths rather than the conventional over/under arrangement.

Other key features include the sturdy electrical and mechanical systems that are associated with the brand.

Exterior Finish and Construction

- Isophthalic gelcoat, exterior layer, white (all areas except hull)
- Blister resistant vinylester gel coat, clear (hull)
- Hull and superstructure painted with a premium linear polyester/polyurethane coating for improved cosmetics & increased durability
- Polymer/copper based anti-fouling bottom paint
- Boot stripe, linear polyester/polyurethane coating
- Decks, non-skid surface, polyurethane paint with polymeric beads
- Solid fiberglass, resin-infused hull bottom, with premium vinylester resins
- Hull sides of resin infused composite construction with PVC foam core and premium vinylester resins
- Solid fiberglass, resin-infused longitudinal stringers
- Steel resin infused into longitudinal stringers at key locations to create engine foundations
- Bulkheads, athwartships and interior decks of resin-infused composite construction using PVC foam core
- Painted black mask

Hardware and Miscellaneous

- Wood bulkheads, cabinetry and trim with a satin polyester finish in cherry or African mahogany
- All hardware in satin nickel
- Fortress FX-55 anchor, anchor line and deck hawse pipe with anchor tensioner
- (4) polished stainless-steel spring line cleats with chafing strips, through bolted in aluminum backing plate
- Polished stainless-steel bow cleats and chocks with chafing strips, through-bolted in aluminum backing plate
- (2) polished stainless-steel stern cleats and hawse pipes, through-bolted in aluminum backing plate
- Polished anodized welded aluminum rails on bow, side-deck and flybridge, drilled and tapped in aluminum backing plates
- Fog bell
- Dual air/electric horn
- Zincs on rudders and shafts
- (6) Black braided nylon mooring lines
- Alloy 22 high-strength propeller shafts
- Manganese bronze dripless rudder seals
- Dripless shaft seals with spare seals
- (6) Life jackets
- Life ring
- (4) Portable "drychem" fire extinguishers, U.L. approved in compliance w/ United States Coast Guard & ABYC standards
- Interceptor trim control
- Manganese bronze struts
- Stainless-steel rudders
- Propellers, Nibral high performance

- Reboarding steps to cockpit
- (3) Black fenders
- Deck plates for fuel and water fills and waste pump out
- Heavy duty engine couplings
- Anchor locker on bow deck

Electrical Systems

- (2) 24 volt banks of heavy-duty, 12 volt marine batteries mounted in fire retardant fiberglass boxes
- U.L. 1426 listed boat cable, tin-coated with insulation
- 240-volt automatic/programmable battery charger, 50/60Hz
- Automatic battery paralleling system with switch at control console
- 240 volt, 50 amp, retractable shore cord with overcurrent protection (cockpit)
- 240 volt, 50 amp, shore cord inlet with cord
- DC LED lights and fixtures
- AC duplex outlet(s) with ground fault protection
- Battery control panel with fuses and isolation switches
- DC electronics panel with magnetic circuit breakers
- AC and DC distribution panels with magnetic circuit breakers
- AC switching panel with source selector switches, volt meter, ampmeter, frequency meter, generator start/stop controls and distribution panel selector switches
- Navigation lights
- Ground fault protection on AC receptacles and lighting circuits
- Air conditioning, 42,000 BTU, with reverse cycle heating
- TV antenna, omni-directional
- Ventilation fans in attic space

Flybridge

- Systems monitor with programmable logic controller read-out, visual and audible signals for exhaust temperature, alternator, battery voltage, high bilge water, fire warning in engine compartment, fire extinguisher discharge in engine room, AC power loss, smoke detectors, carbon monoxide detectors, and holding tank 3/4 full monitor
- Polished anodized welded aluminum rails and stanchions
- (2) bench seats with vinyl-covered polyfoam cushions and storage underneath
- Control station with all necessary switches and dimmable lighted instrument panel
- Compass with dimmable light
- Pod console with custom wheel and single-lever clutch and throttle controls (electronic) with emergency back-up, engine synchronization, and trolling valve control switches
- Hydraulic power-assisted steering
- (2) adjustable helmchairs
- DC AM/FM stereo receiver with CD player and speakers
- Neutral interlock switches allowing engine to start in neutral only
- Fuel level gauges
- Rod storage space in port bench seat
- Top-loading insulated drink box
- Additional storage areas beneath seat(s) and console
- Powder-coated grab rails

Cockpit

- Molded fiberglass, 135 square feet including mezzanine with seating
- Seating with cushions across upper mezzanine
- Polished anodized aluminum ladder to flybridge with acrylic steps
- Transom door
- Fiberglass cockpit boarding step box with storage

- Sliding glass door to deckhouse
- Stereo speakers with volume control
- DC LED overhead lights under flybridge overhang
- Molded-in grab rails on cabin side
- Hatch with chrome plated brass lock to engine compartment
- Freshwater wash down outlet
- Shore water connection with pressure-reducing valve
- Bait and Tackle Center with 3 drawers
- 5.4-cubic-foot bait freezer, port mezzanine
- Insulated storage box in mezzanine
- Storage tub, lower port mezzanine
- Removable 80" fish box with macerator, flush in deck
- Storage in steps to deckhouse with chill box in top step
- Lazzaretto access through hatch
- Aluminum mounting plate laminated in deck for fighting chair
- Polished stainless-steel rod holders, flush mount, set of 4
- Transom hawsers
- Scuppers in cockpit and cockpit hatches

Engine Compartment and Bilge

- Pultruded fiberglass rudder shelf
- AC fluorescent lights
- DC lights
- DC exhaust blowers
- Twin diesel, freshwater-cooled main engines with electrically controlled marine gears, neutral interlocks, exhaust silencers, engine hour meters, alternators, fuel filters and seawater strainers

- FM200 fixed fire extinguishing system for engine compartment with automatic and remote manual controls, plus audible and visual discharge signals
- 21.5kW freshwater-cooled Electronic Quiet Diesel Onan generator(D) with shock mounts, seawater strainer, remote start, fuel/water separator, hour meter, exhaust water separator and sound enclosure
- Polyethylene water lines
- Freshwater connection
- 24-volt DC bilge and sump pumps: (3) at 3700 gph, (2) at 2000 gph and (4) at 1100 gph, with heavy-duty float switches and protective guards
- Auxiliary emergency bilge pump, 150 gpm in lazarette
- Bronze/chrome-plated ball-valves through-bolted in solid fiberglass on all underwater through hull fittings with electrical bonding throughout
- Pressurized 230 volt AC freshwater pump
- 230-volt AC 20-gallon electric water heater
- Integral fiberglass fuel tank constructed with fire retardant resin and bronze fittings, and coated with fire-retardant paint
- Polyethylene water tank
- Polyethylene sewage holding tank with 24 volt DC sewage pump, plumbed for dockside pump-out with 3/4 full display and alarm as part of systems monitor programmable logic controller
- 24-volt DC oil changing system for engines, gear and generator with Hatteras patented quick disconnect
- U.L. Marine-listed fuel filter/water separator, generator
- Sealed shower sumps
- U.L. Marine-listed duplex fuel filters/water separators with bypass manifold, engines
- Electric fuel priming pumps, engines
- Powder coated grab rails
- Painted polyurethane engine room and bilges
- United States Coast Guard type A1 U.L. Marinelisted fuel lines
- Isolated discharge sea chest

-
- 1" stainless-steel steering tie bar with pivoting self aligning ball joint connection at all cylinder and tie bar connections
 - Insulation in deck
 - Pick-up sea chests
 - DC voltmeter in battery panel
 - Start / stop switches and hour meter
 - Rubber deck mat between engines
 - Transducer well, glycol filled

Salon

- Carpeting
- Fabric headliner with wood accents installed on track system for service access
- Sliding glass door to cockpit
- 32" LCD TV
- Bose Lifestyle 35 home theater with AM/FM, CD/DVD, and surround sound speakers
- Fixed frameless windows with tinted safety glass
- DC LED lighting
- AC duplex outlet(s) with ground fault protection
- L-shaped lounge with rod storage, loose cushions, arm rests and double needle stitching
- Throw pillows
- Carbon monoxide detector
- Smoke detector
- HVAC control
- Polished stainless-steel threshold at salon door

Galley and Dinette

- Amtico vinyl flooring
- Fabric headliner installed on track system for service access
- Fixed frameless windows with tinted safety glass
- Microwave/convection oven covered by cabinet door
- DC LED lighting
- AC duplex outlet(s) with ground fault protection
- Genuine wood inserts to match interior finish on appliance fascia
- L-shaped dinette with storage under seat
- Solid-surface countertops with sink and storage cabinets made of finished wood
- AC undercounter refrigerator and freezer drawer unit
- AC four-burner ceramic cooktop
- One-half hp continuous feed garbage disposal
- (2) Drawers in galley fascia, (4) in upper cabinets behind doors

Companionway

- Carpeting
- Fabric headliner installed on track system for service access
- Fabric covered hullside(s) and bulkhead(s) installed on track system for service access
- Flush panel doors with door stops to staterooms and head(s)
- Lighted stairway to salon
- DC LED lighting
- Access to port & starboard storage, electric panels, and electric water tank gauge with DC light
- Wainscoting

Master Stateroom

- Carpeting

-
- Fabric headliner installed on track system for service access
 - Fabric covered hullside(s) and bulkhead(s) installed on track system for service access
 - Queen-sized berth with upholstered headboard and cedar-lined storage underneath
 - Upholstered berth base
 - HMC System 1 mattress, spread, throw pillows, pillows, pillow shams, mattress pad and sheets
 - Cedar-lined hanging locker with doors, shelf and automatic light
 - Nightstands with drawers
 - Dresser with drawers
 - 19" LCD TV
 - Bose 3-2-1 GS with AM/FM and DVD/CD w/speakers
 - Full-length mirror
 - DC LED lighting
 - DC low-voltage lights under berth
 - AC duplex outlet(s) with ground fault protection
 - Private access to head
 - Smoke detector
 - Carbon monoxide detector
 - HVAC control

Bow VIP Stateroom

- Carpeting
- Fabric headliner installed on track system for service access
- Fabric covered hullside(s) and bulkhead(s) installed on track system for service access
- Queen-sized tapered berth with upholstered headboard and cedarlined storage underneath
- Upholstered berth base
- HMC System 1 mattress, spread, throw pillows, pillows, pillow shams, mattress pad and sheets

-
- Cedar-lined hanging/storage lockers with automatic light
 - Nightstands, port and starboard
 - DC AM/FM stereo receiver with CD player and speakers
 - Full-length mirror
 - DC LED lighting
 - AC duplex outlet(s) with ground fault protection
 - Private access to head
 - Smoke detector
 - Carbon monoxide detector
 - HVAC control
 - Screened overhead hatch with privacy cover
 - Washer/dryer

Starboard Guest Stateroom

- Carpeting
- Fabric headliner installed on track system for service access
- Fabric covered hullside(s) and bulkhead(s) installed on track system for service access
- Twin berths with storage under outer berth
- Upholstered berth base(s)
- HMC System 1 mattress, spread, throw pillows, pillows, pillow shams, mattress pad and sheets
- Double cedar-lined hanging locker with doors, shelf and automatic light
- Nightstand with drawers
- Full-length mirror
- DC LED lighting
- AC duplex outlet(s) with ground fault protection

- Private access to head
- Smoke detector
- Carbon monoxide detector
- HVAC control

Master Head

- Amtico vinyl flooring
- Fabric headliner installed on track system for service access
- Wallcovering
- Solid-surface countertop, backsplash, and side splash with integral sink
- Hardwood baseboards
- Stall shower with door and automatic sump pump
- Storage cabinet with mirror above sink
- Base cabinet with storage
- Towel bar
- Freshwater toilet
- 120 volt AC air freshener blower
- DC LED lighting
- AC duplex outlet(s) with ground fault protection
- Plexi mirror around upper cabinet
- Holding tank 3/4 full indicator lights

Guest Head

- Amtico vinyl flooring
- Fabric headliner installed on track system for service access
- Wallcovering

- Solid-surface countertop, backsplash, and side splash with integral sink
- Hardwood baseboards
- Stall shower with door and automatic sump pump
- Storage cabinet with mirror
- Base cabinet to match interior finish with storage
- Towel bar
- Freshwater toilet
- 120V AC air freshener blower
- DC LED lighting
- AC duplex outlet(s) with ground fault protection
- Plexi-mirror around upper cabinet
- Holding tank 3/4 full indicator light

Исключения

При продаже яхты исключаются личные вещи владельца.

Отказ от ответственности

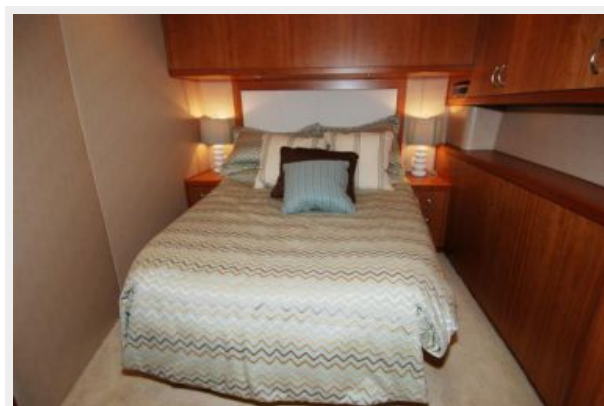
Компания предоставляет описание судна или яхты добросовестно, но не может гарантировать точность этой информации, а также не ручается за техническое состояние. Покупатель должен проинструктировать своих агентов или оценщиков исследовать представленную информацию более подробно, по собственному желанию. Продажа судна или яхты, изменение цены или снятие с продажи будет происходить без предварительного уведомления.

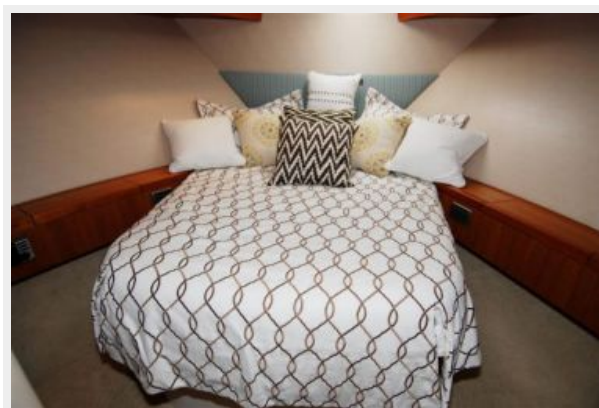
ФОТОГРАФИИ

















КОНТАКТЫ

Андрей Шестаков (Andrey Shestakov) – ведущий яхтенный брокер отдела продаж яхт и судов компании Shestakov Yacht Sales Inc. Официальный представитель Shestakov Yacht Sales Inc. для русскоговорящих клиентов в центральном офисе компании в Майами/Форт Лодердейл/Флорида/США.

Контактная информация

Email: andrey@shestakovyachtsales.com

Web: shestakovyachtsales.com

Телефоны

Краснодарский край: **+7(918)465-66-44**

США, Майами, Флорида: **+1(954)274-4435**

Время работы

Понедельник – Суббота: **9:00 - 21:00**
EDT

Воскресенье: **Закрето**

Адрес



Harbour Towne Marina, 850 NE 3rd St,
STE 213, Dania, FL 33004