

ACHARNE — NEW ENGLAND BOATWORKS



Builder: NEW ENGLAND BOATWORKS

Year Built: 1999

Model: Motor Yacht

Price: PRICE ON APPLICATION

Location: Saint-Barthelemy

LOA: 80' 0" (24.38m)

Beam: 16' 6" (5.03m)

Min Draft: 6' 6" (1.98m)

Cruise Speed: 10 Kts. (12 MPH)

Max Speed: 12 Kts. (14 MPH)

Our experienced yacht broker, Andrey Shestakov, will help you choose and buy a yacht that best suits your needs **ACHARNE — NEW ENGLAND BOATWORKS** from our catalogue. Presently, at Shestakov Yacht Sales Inc., we have a wide variety of yachts available on our sale's list. We also work in close contact with all the big yacht manufacturers from all over the world.

If you would like to buy a yacht **ACHARNE — NEW ENGLAND BOATWORKS** or would like help answering any questions concerning purchasing, selling or chartering a yacht, please call **+1(954)274-4435**

TABLE OF CONTENTS

TABLE OF CONTENTS	2
SPECIFICATIONS	4
Basic Information	4
Dimensions	4
Speed, Capacities and Weight	4
Accommodations	4
Hull and Deck Information	5
Engine Information	5
PHOTOS	6
Living Area	6
Living Area	6
Living Area	6
Living Area	6
Living Area	6
Living Area	6
Living Area	7
Living Area	7
Galley	7
Cabin	7
Cabin	7
Bath	7
Galley	8
Bath	8
Galley	8
Deck	8
Deck	8
Deck	8
Deck	9

Deck	9
Deck	9
Deck	9
Tender	9
Deck	9
Detail	10
Detail	10
Detail	10
Detail	10
Detail	10
Detail	10
Detail	11
Running	11
CONTACTS	12
Contact details	12
Telephones	12
Office hours	12
Address	12

SPECIFICATIONS

Basic Information

Category: Motor Yacht

Sub Category: Adventure Vessel

Model Year: 1999

Year Built: 1999

Country: Saint-Barthelemy

Dimensions

LOA: 80' 0" (24.38m)

LOD: 78' 0" (23.77m)

Beam: 16' 6" (5.03m)

Min Draft: 6' 6" (1.98m)

Speed, Capacities and Weight

Cruise Speed: 10 Kts. (12 MPH)

Cruise Speed RPM: 1600 Kts.

Cruise Speed Range: 2520

Max Speed: 12 Kts. (14 MPH)

Max Speed RPM: 2400 Kts.

Max Speed Range: 2330 Kts.

Displacement: 41887.82978 Pounds

Gross Tonnage: 43 Pounds

Water Capacity: 140 Gallons

Holding Tank: 50 Gallons

Fuel Capacity: 700 Gallons

Accommodations

Total Cabins: 2

Total Berths: 5

Sleeps: 4

Total Heads: 2

Crew Cabin: 1

Crew Berths: 1

Crew Sleeps: 1

Hull and Deck Information

Hull Material: Carbon Composite

Hull Designer: New Englan Boat Works

Exterior Designer: Bill Langen

Engine Information

Engines: 1

Manufacturer: Cummins

Model: 6BT 5.91

Engine Type: Inboard

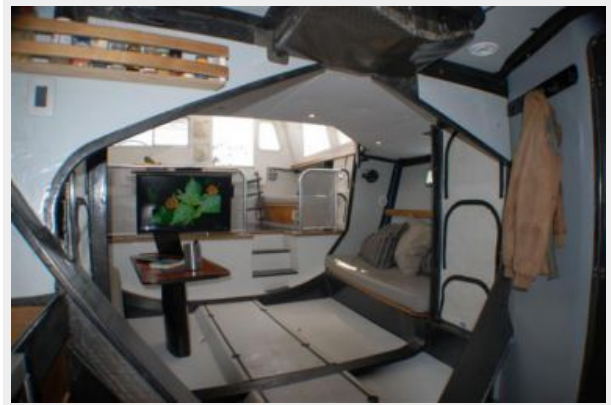
Fuel Type: Diesel

PHOTOS

Living Area



Living Area



Living Area



Living Area



Living Area



Living Area



Living Area



Living Area



Galley



Cabin



Cabin



Bath



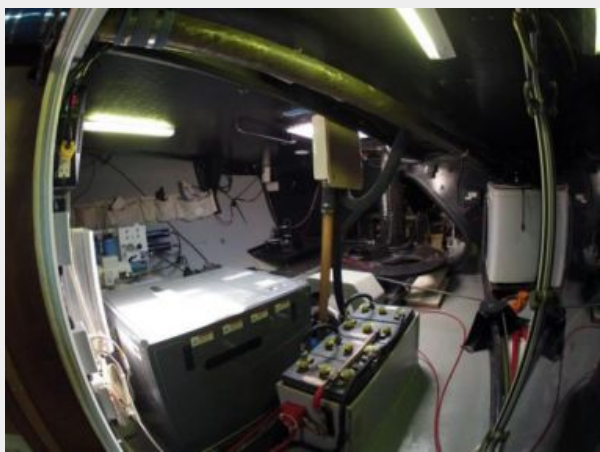
Bath



Galley



Galley



Deck



Deck



Deck



Deck



Deck



Deck



Deck



Tender



Deck



Detail



Detail



Detail



Detail



Detail



Detail



Detail



Running



CONTACTS

Andrey Shestakov, leading yacht broker of the sales department of Shestakov Yacht Sales Inc. Shestakov Yacht Sales Inc., the official representative of the Miami/Fort Lauderdale FL headquarters.

Contact details

Email: andrey@shestakovyachtsales.com

Web: shestakovyachtsales.com/en/

Telephones

USA: +1(954)274-4435

Office hours

Monday – Saturday: **9:00 - 21:00** EDT

Sunday: **closed**

Address



Harbour Towne Marina, 850 NE 3rd St,
STE 213, Dania, FL 33004