

MARLIN GALE — OCEAN YACHTS



Builder: [Ocean Yachts](#)

Year Built: 2007

Model: Sport Fisherman

Price: PRICE ON APPLICATION

Location: United States

LOA: 46' 0" (14.02m)

Beam: 15' 9" (4.80m)

Max Draft: 4' 2" (1.27m)

Our experienced yacht broker, Andrey Shestakov, will help you choose and buy a yacht that best suits your needs **MARLIN GALE — Ocean Yachts** from our catalogue. Presently, at Shestakov Yacht Sales Inc., we have a wide variety of yachts available on our sale's list. We also work in close contact with all the big yacht manufacturers from all over the world.

If you would like to buy a yacht **MARLIN GALE — Ocean Yachts** or would like help answering any questions concerning purchasing, selling or chartering a yacht, please call **+1(954)274-4435**

TABLE OF CONTENTS

TABLE OF CONTENTS	2
SPECIFICATIONS	3
Overview	3
Basic Information	3
Dimensions	3
Speed, Capacities and Weight	3
Accommodations	3
Hull and Deck Information	4
Engine Information	4
DETAILED INFORMATION	5
Accommodations	5
Galley	5
Electrical/Mechanical Equipment	5
Electronics	6
Additional	6
Exclusions	7
Disclaimer	7
PHOTOS	8
CONTACTS	18
Contact details	18
Telephones	18
Office hours	18
Address	18

SPECIFICATIONS

Overview

Loaded with equipment and the popular MTU Series 60 engines and Custom Veem Props. Incredible electronics display with 3 12" C series Raymarine Displays, Sat TV, Two Icom M 504 VHF's, Simrad Autopilot, Sat Weather, sounder with a new 4KW Transducer, and three Sea Vision Underwater Lights. New stainless drawer style refrigerator on flybridge, teaser reels, and new Teak entrance steps. Owner moving up to a larger Ocean and wants this boat sold.

Basic Information

Category: Sport Fisherman

Sub Category: Sport Fisherman

Model Year: 2007

Year Built: 2007

Country: United States

Vessel Top: Hardtop

Fly Bridge: Yes

Cockpit: Yes

Dimensions

LOA: 46' 0" (14.02m)

Beam: 15' 9" (4.80m)

Max Draft: 4' 2" (1.27m)

Speed, Capacities and Weight

Displacement: 42500 Pounds

Water Capacity: 125 Gallons

Holding Tank: 50 Gallons

Fuel Capacity: 620 Gallons

Accommodations

Total Cabins: 3

Total Heads: 2

Hull and Deck Information

Hull Material: Fiberglass

Engine Information

Engines: 2

Manufacturer: MTU

Model: Series 60

Engine Type: Inboard

Fuel Type: Diesel

DETAILED INFORMATION

Accommodations

Three stateroom layout with the master located midships. VIP stateroom forward with walkaround queen berth. Third stateroom aft with double bed. Full head and separate shower in the master, and another full head located off the main hallway. VIP stateroom has private access to the guest head. Salon: Bose Lifestyle CD/DVD Surround Sound, Silhouette Blinds, L Shaped Settee, Central Vacuum, 32" Hitachi TV, Dimmable Halogen Lighting. Amtico Salon entry, Teak cocktail table. Master Stateroom: Walkaround Queen Berth, 2 Nightstands, Cedar Hanging Locker, Upgraded Flat Screen TV with DVD Player and Stereo, Plenty of storage, private head with shower. VIP Stateroom: Centerline Queen, 2 hanging lockers, Drawer Storage, Flat Screen TV with DVD, and stereo, private access to guest head. Guest Stateroom: Double berth, Custom Flat Screen TV, Hanging Locker, Washer and Dryer. Heads: Vacuflush Toilets, Separate shower stalls, Vanities with Corian tops and sinks, Medicine Cabinets, Amtico Teak and Holly Flooring.

Galley

- Corian countertops
- Convection / Microwave oven
- Recessed Double Burner electric stove with Corian Cover
- Sub Zero drawer style refrigerator and freezer
- Insta Hot water faucet
- Exhaust Blower
- Water Tank Gauge
- Salon Ice Maker
- Wine Cooler
- Equipment/Compressor room under sole
- Amtico Teak and Holly Flooring
- Booth Style Dinette with High Gloss Teak Table
- Spacious Teak Drawers and Cabinets

Electrical/Mechanical Equipment

- Westerbeke 10KW Generator
- 2 MTU Series 60 Engines (1200) hours
- Custom Veem Props
- Shore power cord 50' with Glendenning Cablemaster
- 120V electrical outlets
- 4 Heavy Duty Deep Cycle Batteries
- Automatic Battery Charger and Parallel system

- Cruiseair Zoned Reverse Cycle Air Conditioning
- Lewmar Concept II Windlass
- Awlgrippped engine room and lazarette
- MTU Level III DDEC Controls with Palm Beach Style Handles
- Trolling Valves
- Nibral Props
- Automatic Fire Extinguisher System
- Reverso Oil Exchange System
- Electric Fuel Priming Pump
- Electric Fuel Transfer Pump

Electronics

- 3 Raymarine 12" C Series Displays
- 2 C Series Processors with controls
- 6' Open Array Radar
- Raymarine 125 GPS Sensor
- Raymarine DSM 400 Sounder
- Raymarine SR100 Sat Weather
- Simrad AP 26 Autopilot
- 2 New Icom M504 VHF's
- 3 Sea Vision Under Water Lights
- Cameras: Cockpit, Salon, Engine Room
- KVH Sat TV M5
- 2 Receivers for sat TV
- Upgraded bridge stereo - Sony CD/Ipod with amps and speakers
- Raymarine C series wireless keyboard
- ACR Spotlight

Additional

- New (5/2014) teak entry steps
- Freezer plates for Fish Box and Drink Box
- New (4/2014) stainless flybridge drawer refrigerator
- Custom Flybridge Hatch Lid
- Teaser Reels
- All exterior lighting upgraded to i2 Multicolor Red/White/Blue - additional lights added to cockpit and flybridge
- Two Teak Helm Chairs
- 2 Salon Runners, 1 full, 1 partial
- Fighting Chair does not convey with sale

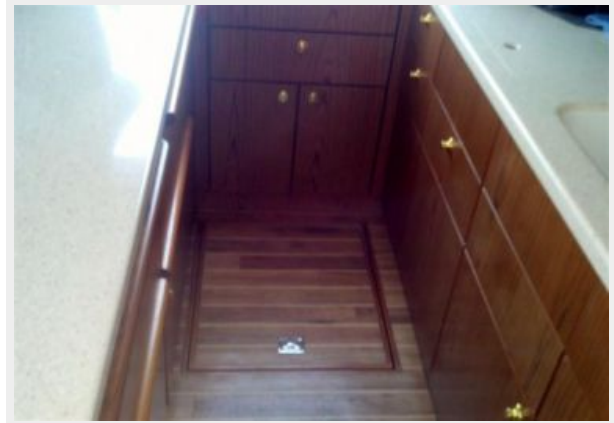
Exclusions

Owner's personal belongings.

Disclaimer

The Company offers the details of this vessel or yacht in good faith but cannot guarantee or warrant the accuracy of this information nor warrant the condition of the vessel. A buyer should instruct his representatives, agents, or his surveyors, to investigate such details as the buyer desires validated. This vessel or yacht is offered subject to prior sale, price change, or withdrawal without notice.

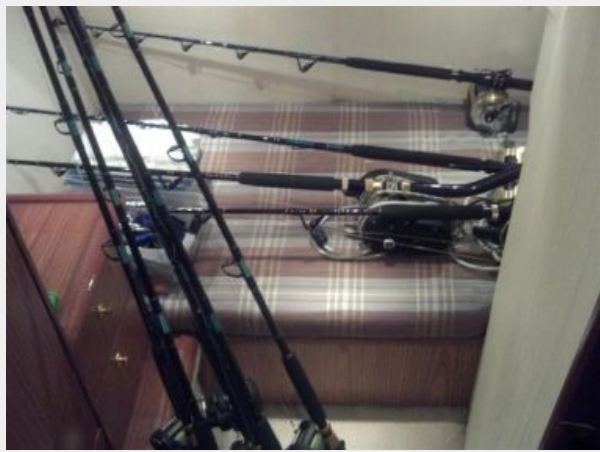
PHOTOS

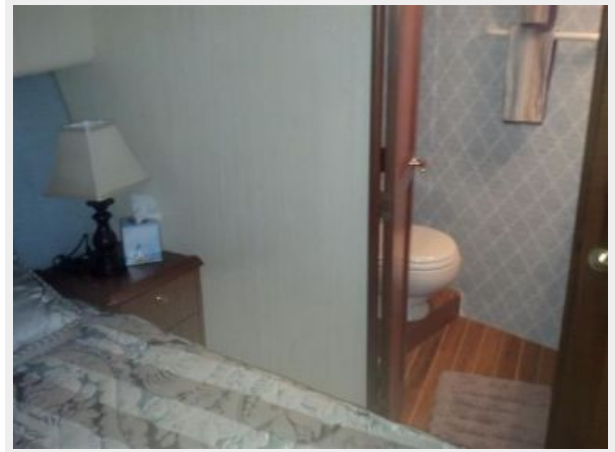
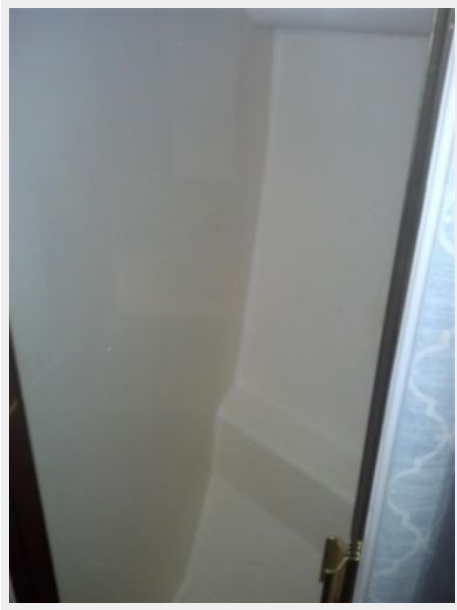




















CONTACTS

Andrey Shestakov, leading yacht broker of the sales department of Shestakov Yacht Sales Inc. Shestakov Yacht Sales Inc., the official representative of the Miami/Fort Lauderdale FL headquarters.

Contact details

Email: andrey@shestakovyachtsales.com

Web: shestakovyachtsales.com/en/

Telephones

USA: +1(954)274-4435

Office hours

Monday – Saturday: **9:00 - 21:00** EDT

Sunday: **closed**

Address



Harbour Towne Marina, 850 NE 3rd St,
STE 213, Dania, FL 33004