

## SMARTY — CRUISERS



**Builder:** CRUISERS

**Year Built:** 1988

**Model:** Sport Fisherman

**Price:** PRICE ON APPLICATION

**Location:** United States

**LOA:** 32' 10" (10.01m)

**Min Draft:** 2' 10" (0.86m)

**Cruise Speed:** 19 Kts. (22 MPH)

**Max Speed:** 28 Kts. (32 MPH)

Our experienced yacht broker, Andrey Shestakov, will help you choose and buy a yacht that best suits your needs **Smarty — CRUISERS** from our catalogue. Presently, at Shestakov Yacht Sales Inc., we have a wide variety of yachts available on our sale's list. We also work in close contact with all the big yacht manufacturers from all over the world.

If you would like to buy a yacht **Smarty — CRUISERS** or would like help answering any questions concerning purchasing, selling or chartering a yacht, please call **+1(954)274-4435**

---

# TABLE OF CONTENTS

---

TABLE OF CONTENTS	2
SPECIFICATIONS	3
Overview	3
Basic Information	4
Dimensions	5
Speed, Capacities and Weight	5
Accommodations	5
Hull and Deck Information	5
Engine Information	5
PHOTOS	6
CONTACTS	11
Contact details	11
Telephones	11
Office hours	11
Address	11

---

# SPECIFICATIONS

---

## Overview

---

The 338 CRUISERS INC. "Chateau Vee" Sedan is a Family Sedan Cruiser that sleeps 6, has a mid cabin tucked in under salon, Twin 454 Crusaders (FWC), Air Conditioning, Generator, Full Enclosure. Enjoy the waterways or a home away from home on the water for short dollars.

### **BROKER REMARKS/DESCRIPTION:**

The 338 Cruisers was a popular model for the long time builder out of Wisconsin, Cruisers Inc. built on a solid fiberglass, modified deep vee hull with prop pockets to allow you to get into shallower waters than others boats in her size/weight range. She features a god sized cockpit, large flybridge with seating for a large group and a 2 stateroom interior with Twin double Berths ( 1 forward and one tucked in to port under the salon) and a convertible dinette lounge in the salon. There's a full sized refrigerator in the galley. . A good open water performer she'll cruise at 19-20 knots and top end in the high 20's.

This boat is in good condition for her age and will allow her new owners to do some good good boating or to just use the boat as a cottage getaway on the water. Her new owners will want to update the boat as far as electronics and interior to his/her taste.

**SELLER CLAIMS THAT MECHANICALLY THE BOAT IS ON GOOD RUNNING ORDER AND THAT THE ENGINES AND GENERATOR RUN WELL. Accommodations**

As you enter the salon through a glass slider to port is a large dinette lounge which converts to a large double bed. To starboard is a wet bar with sink, storage and a counter area which runs forward with storage compartments under. Down 3 steps to port is a full galley with stove-top, Oven, Microwave, Full size Refrigerator (new) and SS sink. Across to port and tucked under the salon is a private guest stateroom with large double bed and hanging locker. Forward in this stateroom is direct private entry into the head. The head is forward to port with a vanity, toilet and shower stall and is accessed either via companionway or via guest stateroom. The master stateroom is forward and features a large double berth with drawer storage under, hanging locker, and privacy door.

There are large wrap around windows in the salon, large forward windshields for plenty of natural light in the galley.

### **Deck and Hull**

- **Bimini Top (Light blue)**
- **Cockpit Floodlights**

- **Swim platform with ladder**
- **L-Shaped cockpit seat**
- **Anchor Windlass**
- **Anchor and line**
- **4 Fender Baskets mounted to Bow Rail**
- **Hydraulic Trim Tabs**
- **Stainless Bow Rail and safety rails**
- **White gelcoat hull with painted Navy Gunnel Accent stripe**

## Electrical

### 110V Shorepower (AC)

- **110V Ship Power (DC)**
- **Dual 30 Amp Shore power Service**
- **5 KW Kohler Generator**
- **Battery Charger**
- **3 New Batteries**
- **Electronics GPS**
  - **Depth finder**
  - **Horizon Intrepid VHF Radio**
  - **Ensign Digital Engine SynchronizerMachinery/Systems**
  - **Marineair Air Conditioning**
  - **Halon system**
  - **Fresh water cooling on Engines and Generator**

## Disclaimer

**The Company offers the details of this vessel in good faith but cannot guarantee or warrant the accuracy of this information nor warrant the condition of the vessel. A buyer should instruct his agents, or his surveyors, to investigate such details as the buyer desires validated. This vessel is offered subject to prior sale, price change, or withdrawal without notice.**

## Basic Information

**Category:** Sport Fisherman

**Sub Category:** Sedan

**Model Year:** 1988

**Year Built:** 1988

**Country:** United States

**Vessel Top:** Bimini Top

**Fly Bridge:** Yes

**Cockpit:** Yes

---

## Dimensions

---

**LOA:** 32' 10" (10.01m)

**Min Draft:** 2' 10" (0.86m)

**Clearance:** 11' 6" (3.51m)

---

## Speed, Capacities and Weight

---

**Cruise Speed:** 19 Kts. (22 MPH)

**Max Speed:** 28 Kts. (32 MPH)

**Displacement:** 13000 Pounds

**Water Capacity:** 70 Gallons

**Fuel Capacity:** 300 Gallons

---

## Accommodations

---

**Total Cabins:** 2

**Sleeps:** 6

**Total Heads:** 1

---

## Hull and Deck Information

---

**Hull Material:** Fiberglass

**Hull Configuration:** Modified Deep Vee

**Hull Color:** White/Blue

---

## Engine Information

---

**Engines:** 2

**Manufacturer:** Crusader

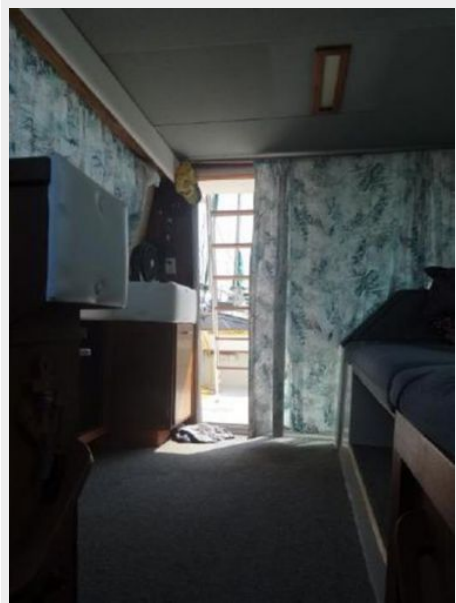
**Model:** 7.4L/ 454 C.I.

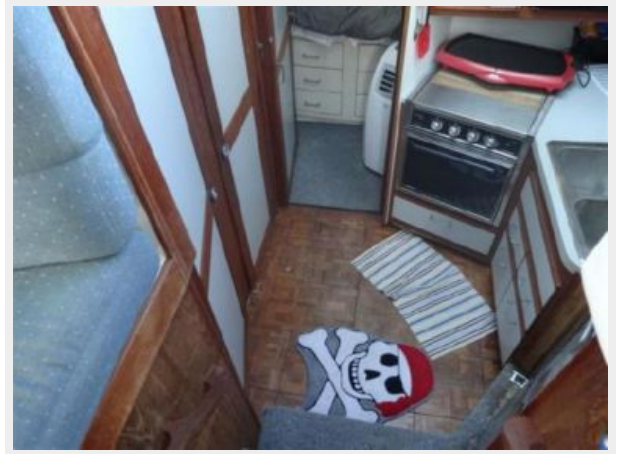
**Engine Type:** Inboard

**Fuel Type:** Gas

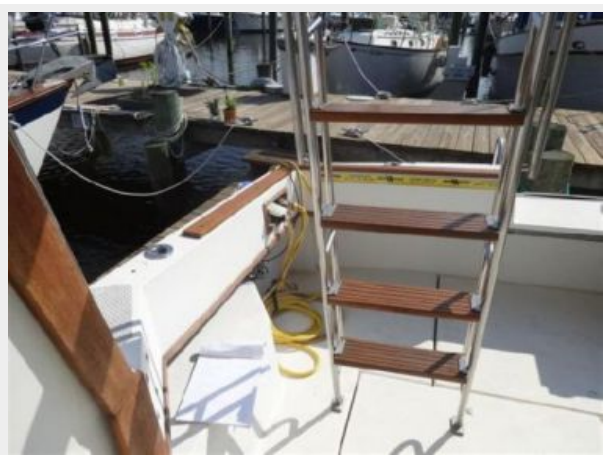
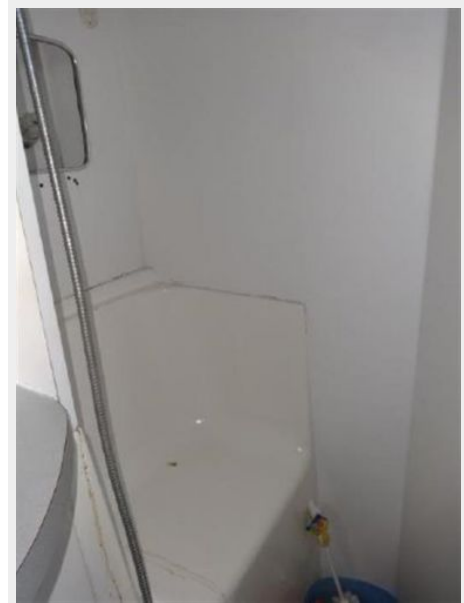
# PHOTOS













# CONTACTS

---

Andrey Shestakov, leading yacht broker of the sales department of Shestakov Yacht Sales Inc. Shestakov Yacht Sales Inc., the official representative of the Miami/Fort Lauderdale FL headquarters.

## Contact details

---

Email: [andrey@shestakovyachtsales.com](mailto:andrey@shestakovyachtsales.com)

Web: [shestakovyachtsales.com/en/](http://shestakovyachtsales.com/en/)

## Telephones

---

USA: +1(954)274-4435

## Office hours

---

Monday – Saturday: **9:00 - 21:00** EDT

Sunday: **closed**

## Address

---



Harbour Towne Marina, 850 NE 3rd St,  
STE 213, Dania, FL 33004