

CHARMER — VIKING



Builder: VIKING

Year Built: 2007

Model: Sport Fisherman

Price: PRICE ON APPLICATION

Location: United States

LOA: 48' 0" (14.63m)

Beam: 16' 6" (5.03m)

Min Draft: 4' 9" (1.45m)

Our experienced yacht broker, Andrey Shestakov, will help you choose and buy a yacht that best suits your needs **CHARMER — VIKING** from our catalogue. Presently, at Shestakov Yacht Sales Inc., we have a wide variety of yachts available on our sale's list. We also work in close contact with all the big yacht manufacturers from all over the world.

If you would like to buy a yacht **CHARMER — VIKING** or would like help answering any questions concerning purchasing, selling or chartering a yacht, please call **+1(954)274-4435**

TABLE OF CONTENTS

TABLE OF CONTENTS	2
SPECIFICATIONS	5
Overview	5
Basic Information	5
Dimensions	5
Speed, Capacities and Weight	5
Accommodations	5
Hull and Deck Information	6
Engine Information	6
DETAILED INFORMATION	7
Accommodations	7
Master Stateroom, Forward Port	7
Guest Stateroom, Forward	7
Guest Stateroom, Amidship Starboard	8
Salon	8
Master Head	8
Guest Head, Amidship Starboard	9
Galley / Laundry, Main Deck, Amidship Port	9
Helm / Electronics and Navigation	9
Deck	10
Engine and Mechanical Equipment	10
Electrical System / Equipment	11
Cockpit / Fishing Equipment	11
Exclusions	11
Salesman's Comments	11
Exclusions	11
Disclaimer	12
PHOTOS	13

Master Stateroom 1	13
Master Stateroom 2	13
Master Stateroom 3	13
Guest Stateroom, Forward	13
Guest Stateroom, Amidship Starboard 1	14
Guest Stateroom, Amidship Starboard 2	14
Salon 1 - Sofa	14
Salon 2 - Sofa	14
Salon 3 - Dinette	14
Salon 4 - Dinette	14
Master Head	15
Salon 5 - Entertainment System	15
Guest Head	15
Galley 1	15
Galley 2	16
Helm / Electronics & Navigation 1	16
Helm / Electronics & Navigation 2	16
Helm / Electronics & Navigation 3	16
Helm / Electronics & Navigation 4 - Electronics	16
Helm / Electronics & Navigation 5 - Electronics	16
Helm / Electronics & Navigation 6 - Radio Box	17
Deck 1 - Windlass	17
Deck 2 - Bow	17
Deck 3 - View From Pulpit	17
Deck 4 - Forward Bridge Seating	17
Deck 5 - Flybridge Seating	17
Deck 6 - Starboard Bridge Seating	18
Deck 7 - Helm Seats	18
Deck 8 - Mezzanine Storage	18

Deck 9 - Refrigerated Drink Box	18
Deck 10 - Port Deck Storage w/ Ice Chipper Outlet	18
Engine & Mechanical Equipment 1 - Engine Room	18
Engine & Mechanical Equipment 2 - Port Engine	19
Engine & Mechanical Equipment 3 - Starboard Engine	19
Engine & Mechanical Equipment 4 - Engine Room	19
Engine & Mechanical Equipment 5 - Engine Room	19
Engine & Mechanical Equipment 6 - Ice Chipper	19
Engine & Mechanical Equipment 7 - Fuel Prime Pumps	19
Engine & Mechanical Equipment 8 - Engine Room	20
Engine & Mechanical Equipment 9 - Aft Bilge	20
Engine & Mechanical Equipment 10 - Engine Room Camera	20
Electrical System / Equipment - Generator	20
Cockpit / Fishing Equipment 1	20
Cockpit / Fishing Equipment 2	20
Cockpit / Fishing Equipment 3 - Tackle Storage	21
Cockpit / Fishing Equipment 4 - Rocket Launcher	21
Cockpit / Fishing Equipment 6 - In-Deck Live Well	21
Cockpit / Fishing Equipment 5 - Fish Box	21
CONTACTS	22
Contact details	22
Telephones	22
Office hours	22
Address	22

SPECIFICATIONS

Overview

You will not find a cleaner 48' Viking on the market! The "Charmer" features MAN Common Rail 1100 hp. engines, Mezzanine seating, great electronics and a beautiful interior! Her knowledgeable owner has spared no expense in the care and maintenance of this boat! **MAJOR PRICE REDUCTION FOR QUICK SALE!!! ACT NOW!!!**

Basic Information

Category: Sport Fisherman

Sub Category: Convertible

Model Year: 2007

Year Built: 2007

Country: United States

Vessel Top: Hardtop

Cockpit: Yes

Dimensions

LOA: 48' 0" (14.63m)

Beam: 16' 6" (5.03m)

Min Draft: 4' 9" (1.45m)

Speed, Capacities and Weight

Displacement: 56000 Pounds

Water Capacity: 175 Gallons

Fuel Capacity: 1012 Gallons

Accommodations

Total Cabins: 3

Total Berths: 5

Sleeps: 6

Total Heads: 2

Hull and Deck Information

Hull Material: Fiberglass

Deck Material: Fiberglass

Hull Configuration: Modified V-Hull

Engine Information

Engines: 2

Manufacturer: MAN

Model: CRV-10

Engine Type: Inboard

Fuel Type: Diesel

DETAILED INFORMATION

Accommodations

Sleeps six owners and guests in three Staterooms for a total of six berths. One Master Head with shower, one Guest Head with shower. Enter the Salon from the starboard side of the Cockpit to find a comfortable L-shaped sofa to port, large Galley forward and dinette to starboard. Her three-Stateroom, two Head layout below provides comfortable accommodations for your family, crew or guests.

Master Stateroom, Forward Port

- TV
- Cabinets
- Credenza
- Carpeting
- Wallpaper
- Night stand
- Ample storage
- Reading lamps
- Hanging locker
- DVD / SAT TV
- Under bed drawer
- Under bed storage
- Wallpaper borders
- Entertainment center
- Ensuite Head w/ shower
- Queen berth w/ upgraded mattress
- Air conditioning / heater with controls
- Stereo system w/ CD player, speakers

Guest Stateroom, Forward

- TV
- Mirror
- Cabinets
- Carpeting
- Hanging locker
- Under bed drawer
- Stereo system w/ speakers
- Comfortable upper & lower berth

- Air conditioning / heater w/ controls

Guest Stateroom, Amidship Starboard

- Carpeting
- Hanging locker
- Under bed drawer
- Upper & lower berths
- Stereo system w/ speakers
- Air conditioning / heater with controls

Salon

The Salon is very open and inviting. She is nicely decorated and ready to entertain!

- Blinds
- Dinette
- 42" TV
- Storage
- Paneling
- Cabinets
- Carpeting
- Wallpaper
- Rug runner
- Hi - Lo table
- Telephone jack
- Cable TV hookups
- Entertainment center
- Sofa w/ storage below
- Air conditioning / heater with controls
- Stereo system w/ CD player, speakers
- Custom covers for sofa, dinette seats, cocktail table & dinette table

Master Head

- Sink
- Shower
- Wallpaper
- Exhaust fan
- Amtico flooring
- Medicine cabinet
- Wallpaper borders

- Vacu-flush, fresh water, overboard, recirculating, holding tank, electric head

Guest Head, Amidship Starboard

- Sink
- Shower
- Paneling
- Wallpaper
- Exhaust fan
- Amtico flooring
- Medicine cabinet
- Wallpaper borders
- Vacu-flush, fresh water, overboard, recirculating, holding tank, electric head

Galley / Laundry, Main Deck, Amidship Port

- Sink
- Water heater
- Clothes dryer
- Clothes washer
- Amtico flooring
- Central vacuum system
- Three-burner, electric stove
- Pressure fresh water system
- Sub-Zero, drawer-style freezers
- Microwave oven / Convection oven
- Sub-Zero, drawer-style refrigerators

Helm / Electronics and Navigation

- SAT TV
- Transducer
- SAT weather
- Furuno sea temp
- Simrad AP28 auto pilot
- Icom 604 VHF radio (primary)
- Furuno NAV NET 3D fish finder
- Furuno NAV NET GPS / Plotter
- Icom 602 VHF radio (secondary)
- Furuno NAV NET 3D 64nm radar
- Furuno 30 3D speed & distance logs

- AM / FM stereo system w/ SAT radio, CD player
- Pair of Furuno NAV NET 3D displays in main electronics box provide network GPS / Plotter / Radar / Sounder
- 15" Raymarine monitor displays a FLIR night vision camera & Cockpit / Engine Room cameras & is located in port electronics box

Deck

- Life jackets
- Bridge curtain
- Transom door
- Spreader lights
- Navigation lights
- Bow pulpit w/ rails
- Anchor w/ 200' lines
- Lewmar electric windlass
- (2) Murray Brothers Helm seats
- Fresh water, salt water, pressure Deck wash down system

Engine and Mechanical Equipment

- Trim tabs
- Fire alarm
- Air conditioner
- Racor fuel filters
- (2) Bilge blowers
- Oil pressure alarm
- Oil transfer system
- Eskimo ice chipper
- Fire control system
- Fresh water cooling
- Engine synchronizers
- Bridge engine controls
- Engine fuel shut-off valve
- Hydraulic, wheel steering
- Engine temperature alarm
- Reverso fuel prime pumps
- Delta T Engine Room vents
- Thermal, acoustical insulation
- Voltage stabilizer transformer
- CO2, automatic fire extinguisher
- (3) Automatic, manual bilge pumps

- (2) Y-valve emergency bilge pumps
- Oil change system plumbed to Cockpit
- Twin 1100 hp. Diesel I/B 2007 MAN CRV-10's w/ 979 hrs.

Electrical System / Equipment

- (8) Batteries
- Dockside cables
- Automatic battery charger
- 12v, 24v DC electrical system
- 110v, 220v AC electrical system
- Onan 16.5kW generator w/ 1200 hrs.

Cockpit / Fishing Equipment

- Fish box
- Bait freezer
- Live fish well
- (8) Rod holders
- Rupp triple spreader outriggers
- MIYA Epoch US #8 teaser reels
- 6-rod Rocket launcher (aft Bridge rail)
- (2) Clearing rod holders in each haunch
- 12v Outlets in Cockpit (port & starboard)
- Teak rocket launcher w/ (4) Rod holders, (2) drink holders, bait tray & cover

Exclusions

Owner's personal gear and items.

Salesman's Comments

You will not find a cleaner 48' Viking on the market! The "Charmer" features MAN Common Rail 1100 hp. engines, Mezzanine seating, great electronics and a beautiful interior. Her knowledgeable owner has spared no expense in the care and maintenance of this boat! **MAJOR PRICE REDUCTION FOR QUICK SALE!!! ACT NOW!!!**

Exclusions

Owner's personal belongings.

Disclaimer

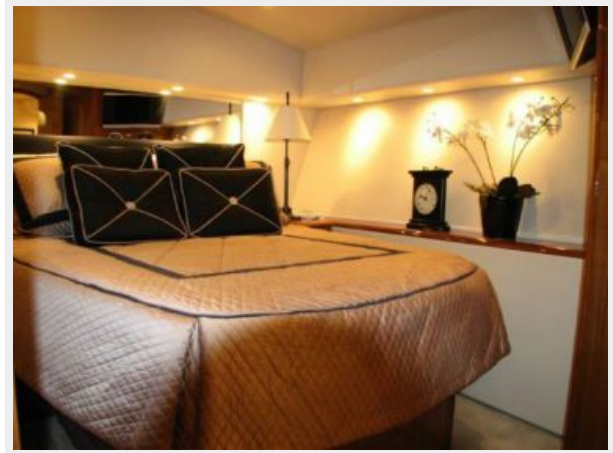
The Company offers the details of this vessel or yacht in good faith but cannot guarantee or warrant the accuracy of this information nor warrant the condition of the vessel. A buyer should instruct his representatives, agents, or his surveyors, to investigate such details as the buyer desires validated. This vessel or yacht is offered subject to prior sale, price change, or withdrawal without notice.

PHOTOS

Master Stateroom 1



Master Stateroom 2



Master Stateroom 3



Guest Stateroom, Forward



Guest Stateroom, Amidship Starboard 1



Guest Stateroom, Amidship Starboard 2



Salon 1 - Sofa



Salon 2 - Sofa



Salon 3 - Dinette



Salon 4 - Dinette



Salon 5 - Entertainment System



Master Head



Guest Head



Galley 1



Galley 2



Helm / Electronics & Navigation 1



Helm / Electronics & Navigation 2



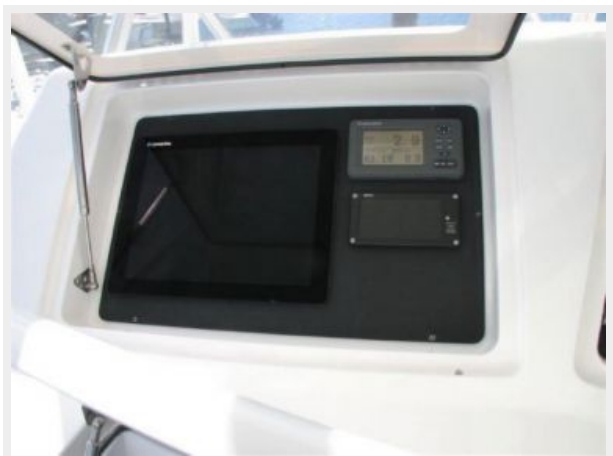
Helm / Electronics & Navigation 3



**Helm / Electronics & Navigation 4 -
Electronics**



**Helm / Electronics & Navigation 5 -
Electronics**



Helm / Electronics & Navigation 6 - Radio Box



Deck 1 - Windlass



Deck 2 - Bow



Deck 3 - View From Pulpit



Deck 4 - Forward Bridge Seating



Deck 5 - Flybridge Seating



Deck 6 - Starboard Bridge Seating



Deck 7 - Helm Seats



Deck 8 - Mezzanine Storage



Deck 9 - Refrigerated Drink Box



Deck 10 - Port Deck Storage w/ Ice Chipper Outlet



Engine & Mechanical Equipment 1 - Engine Room



Engine & Mechanical Equipment 2 - Port Engine



Engine & Mechanical Equipment 3 - Starboard Engine



Engine & Mechanical Equipment 4 - Engine Room



Engine & Mechanical Equipment 5 - Engine Room



Engine & Mechanical Equipment 6 - Ice Chipper



Engine & Mechanical Equipment 7 - Fuel Prime Pumps



Engine & Mechanical Equipment 8 - Engine Room



Engine & Mechanical Equipment 9 - Aft Bilge



Engine & Mechanical Equipment 10 - Engine Room Camera



Electrical System / Equipment - Generator



Cockpit / Fishing Equipment 1



Cockpit / Fishing Equipment 2



Cockpit / Fishing Equipment 3 - Tackle Storage



Cockpit / Fishing Equipment 4 - Rocket Launcher



Cockpit / Fishing Equipment 5 - Fish Box



Cockpit / Fishing Equipment 6 - In-Deck Live Well



CONTACTS

Andrey Shestakov, leading yacht broker of the sales department of Shestakov Yacht Sales Inc. Shestakov Yacht Sales Inc., the official representative of the Miami/Fort Lauderdale FL headquarters.

Contact details

Email: andrey@shestakovyachtsales.com

Web: shestakovyachtsales.com/en/

Telephones

USA: +1(954)274-4435

Office hours

Monday – Saturday: **9:00 - 21:00** EDT

Sunday: **closed**

Address



Harbour Towne Marina, 850 NE 3rd St,
STE 213, Dania, FL 33004