

ANGELA DAWN — LAZZARA



Судостроитель: LAZZARA

Год постройки: 2008

Модель: Моторная яхта

Цена: **ЦЕНА ЯХТЫ ПО ЗАПРОСУ**

Местонахождение: United States

Длина общая: 75' 0" (22.86m)

Ширина: 18' 2" (5.54m)

Макс. осадка: 3' 6" (1.07m)

Крейс. скорость: 24 Kts. (28 MPH)

Макс. скорость: 30 Kts. (35 MPH)

Купить **Angela Dawn — LAZZARA** а также выбрать подходящую вам яхту из нашего каталога яхт вам поможет опытный яхтенный брокер Андрей Шестаков. На сегодняшний день компания **Shestakov Yacht Sales Inc.** имеет большое количество яхт в собственном списке продаж, а также тесно сотрудничает со всеми крупными яхтенными производителями по всему миру.

Для того чтобы купить яхту **Angela Dawn — LAZZARA** а также проконсультироваться по любому вопросу связанному с покупкой, продажей, чартером яхт позвоните по телефону **+7(918)465-66-44**.

ОГЛАВЛЕНИЕ

ОГЛАВЛЕНИЕ	2
ХАРАКТЕРИСТИКИ	5
Обзор	5
Основная информация	5
Размеры	6
Скорость, вместимость и масса	6
Размещение	6
Корпус и палуба	6
Информация о двигателе	6
ПОДРОБНОЕ ОПИСАНИЕ	7
Vessel Information	7
Recent Upgrades	20
Исключения	21
Отказ от ответственности	21
ФОТОГРАФИИ	22
Salon	22
Salon	22
Salon	22
Salon	22
Salon	22
Galley	23
Galley	23
Galley	23
Galley	23
Dinette	23
Dinette	23
Day Head	24
Master Stateroom	24

Master Stateroom	24
Master Stateroom	24
Master Head	25
Master Stateroom	25
Master Head	25
Master Head	25
Forward Stateroom	26
Forward Stateroom	26
Forward Head	26
Forward Stateroom	26
Port Guest Stateroom	27
Port Guest Stateroom	27
Port Guest Stateroom	27
Port Guest Stateroom	27
Port Guest Head	28
Starboard Guest Stateroom	28
Starboard Guest Stateroom	28
Starboard Guest Stateroom	28
Starboard Guest Head	29
Aft Deck	29
Aft Deck	29
Aft Deck	29
Aft Deck	29
Aft Deck	29
Aft Deck	30
Aft Deck	30
Aft Deck	30
Bow	30
Bow	30

Bow	30
Engine Room	31
Engine Room	31
Engine Room	31
Engine Room	31
Engine Room	32
КОНТАКТЫ	33
Контактная информация	33
Телефоны	33
Время работы	33
Адрес	33

ХАРАКТЕРИСТИКИ

Обзор

Angela Dawn is a beautiful custom built 2008 Lazzara LSX built for an experienced yachtsman and captain this is one of the most comprehensive builds in the 75 LSX class Lazzara has ever done. Starting on the aft deck AD has a custom sliding glass door that opens almost the entire span of the aft deck; this unique design was the request of the owner. This allows for a completely open feeling when inside the salon. The interior wood throughout the vessel was stained custom shade to the owners liking. This is the only Lazzara 75LSX with this “shade” of wood in her. It is several shades lighter than her sister ships and makes the interior stunning and unmatched! The galley has beautiful granite counter tops throughout and boasts beautiful full size stainless appliances. AD features the typical 4 stateroom layout with crew quarters in the aft. The starboard stateroom has been modified to adjoin the master stateroom. There is a pocket door in the master that allows back forth access to starboard stateroom. This room features a beautiful full size dresser, couch, full head and a Pullman that folds down above the couch. This room can act as a guest room when necessary but ultimately expands the MSTR usable space. Some of the vessels custom options that make this vessel unlike any other 75LSX Lazzara are:

- Twin generators
- Custom Foredeck storage hatch (increases storage by 30%)
- Custom windless wash-down
- Custom forward storage in deck of forward VIP (2014)
- Custom blue hull paint job (2014)
- Custom insulated engine room fans to reduce noise
- Fuel polishing system
- Additional Underwater lights
- Backup Garmin GPS unit at helm
- Custom interior joinery work throughout vessel
- Custom aft deck sliding stainless door
- Smart start A/C system
- Full size oven
- Wine cooler
- Aft deck ice maker
- Bigger walk in closet in master stateroom
- Stainless Steel aft deck railings in lieu of teak rails

Основная информация

Тип судна: Моторная яхта

Модельный год: 2008

Год постройки: 2008

Страна: United States

Размеры

Длина общая: 75' 0" (22.86m)

Ширина: 18' 2" (5.54m)

Макс. осадка: 3' 6" (1.07m)

Трапы: 17' 0" (5.18m)

Скорость, вместимость и масса

Крейс. скорость: 24 Kts. (28 MPH)

Макс. скорость: 30 Kts. (35 MPH)

Водоизмещение: 81000 Pounds

Вместимость воды: 200 Gallons

Вместимость сточного бака: 100 Gallons **Объем топливного бака:** 830 Gallons

Размещение

Всего кают: 4

Всего ком. состава: 3

Корпус и палуба

Материал корпуса: Fiberglass

Информация о двигателе

Двигатели: 2

Производитель: Volvo

Модель: IPS 600

Тип двигателя: Inboard

Тип топлива: Diesel

ПОДРОБНОЕ ОПИСАНИЕ

Vessel Information

Angela Dawn is a beautiful custom built 2008 Lazzara LSX built for an experienced yachtsman and captain this is one of the most comprehensive builds in the 75 LSX class Lazzara has ever done. Starting on the aft deck AD has a custom sliding glass door that opens almost the entire span of the aft deck; this unique design was the request of the owner. This allows for a completely open feeling when inside the salon. The interior wood throughout the vessel was stained custom shade to the owners liking. This is the only Lazzara 75LSX with this “shade” of wood in her. It is several shades lighter than her sister ships and makes the interior stunning and unmatched! The galley has beautiful granite counter tops throughout and boasts beautiful full size stainless appliances. AD features the typical 4 stateroom layout with crew quarters in the aft. The starboard stateroom has been modified to adjoin the master stateroom. There is a pocket door in the master that allows back forth access to starboard stateroom. This room features a beautiful full size dresser, couch, full head and a Pullman that folds down above the couch. This room can act as a guest room when necessary but ultimately expands the MSTR usable space. Some of the vessels custom options that make this vessel unlike any other 75LSX Lazzara are:

- Twin generators
- Custom Foredeck storage hatch (increases storage by 30%)
- Custom windless wash-down
- Custom forward storage in deck of forward VIP (2014)
- Custom blue hull paint job (2014)
- Custom insulated engine room fans to reduce noise
- Fuel polishing system
- Additional Underwater lights
- Backup Garmin GPS unit at helm
- Custom interior joinery work throughout vessel
- Custom aft deck sliding stainless door
- Smart start A/C system
- Full size oven
- Wine cooler
- Aft deck ice maker
- Bigger walk in closet in master stateroom
- Stainless Steel aft deck railings in lieu of teak rails

SALON

- Overhead lighting
- Nigh light
- Lighting 120 low volt, halogen
- High gloss wood interior
- Storage cabinets

- Salon carpet/pad, flooring with wood flooring at entry way
- Sectional sofa in Ultraleather
- Lounge chair
- Pleated fabric shades
- Sunroof, retractable hydraulic
- Wet bar includes refrigerator with icemaker
- Bar storage, cabinet with bottle and glass racks
- Coffee table
- 120 vac duplex receptacles
- Two (2) rain gears locker
- Day head

GALLEY/DINETTE

- Microwave/convection oven
- Designer range hood
- Stainless steel appliances
- Refrigerator with icemaker
- Granite countertops
- Cook-top, recessed four-burner
- Coffee maker, Krups®
- Storage cabinets, upper and lower
- Settee with storage
- Expandable custom dinette table with storage
- Glass serving area
- Lighting, indirect
- Wood plank floor
- Fire blanket
- Two (2) barstools
- 120 vac duplex receptacles (GFI protected)
- Stainless steel "Apron" sink with single lever
- TV

MASTER STATEROOM

- Walk around Lazzara-size king bed with innerspring mattress
- Glass desk port side
- Ottoman desk chair
- Two (2) dressing bureaus port side with six (6) drawers each
- Two (2) dressing bureaus starboard side with six (6) drawers each
- Veneered night stand, port and starboard, with wood tops and drawers/bureaus, port and starboard, with "soft close" drawers
- Upholstered loveseat starboard side
- Shades over panoramic windows
- Private access to head

- Carpet
- Majilite overhead panels w/foam backing
- Fabric wall coverings, removable panels
- Two "Horizon" panoramic windows
- Window treatment
- Direct and indirect lighting
- Receptacles: 120 VAC duplex
- Decorative sconces
- TV new (2014)

MASTER HEAD

- Marble vanity top, with two undermount sinks
- Brushed nickel fixtures
- Walk-in closet with mirrored doors
- Clothing bureau with drawers
- Medicine cabinet with beveled mirror
- Infiniti edge marble flooring
- Marble enclosed full size shower with seamless glass enclosure
- Headhunter marine toilet
- Towel bars, tissue holders, wall-mounted soap dishes and tumbler holders
- Shower panel system with multiple body sprays
- Built-in magazine rack
- Exhaust fan
- Recessed halogen down lights
- Two 120 VAC duplex receptacles with ground fault breakers
- Linen closet
- Overhead low voltage ac lighting
- Pull out clothes hamper

PORT VIP STATEROOM

- Lazzara double-size bed with innerspring mattress
- Glass window on inboard cabin wall
- Headboard
- Hanging locker with full-length mirrored door
- Nightstand with drawers
- Storage drawers under bed
- Carpet
- Majilite overhead panels with foam backing
- Blinds over window
- "Horizon" panoramic windows
- Direct and indirect lighting
- Receptacle: 120 VAC duplex

STARBOARD STATEROOM

- Sofa
- Fold down pullman
- Windows
- Dresser
- Carpet

PORT AND STARBOARD VIP HEADS

- Headhunter marine toilet
- Storage, medicine cabinet
- Vanity with marble countertop and backsplash
- Headhunter marine toilet
- Power vent fan
- Wall mounted soap dish, tumbler and towel shelf with rails tissue holder
- Storage, medicine cabinet w/frosted glass
- 120 vac duplex receptacles (GFI glass front protected)
- Custom vanity with marble countertop and undermount sink

AFT STATEROOM

- Access to engine room
- Access to main deck
- Bunk, lower with storage below
- Bunk, upper
- Flooring, carpet
- Lighting, low voltage AC halogen
- Outlets, 120V GFI protected
- Storage, drawers

AFT STATEROOM HEAD

- Headhunter marine toilet
- Shower and sink
- 120 vac duplex receptacles (GFI protected)

FORWARD VIP STATEROOM

- Lazzara queen bed with innerspring mattress
- Hanging locker
- Chain locker bulkhead with access
- Storage, cabinet with drawers and shelves
- 24V reading lights (12 volt) LED
- Lighting low voltage AC halogen
- Deck hatch/screen/blackout

- Carpet
- Storage under bed
- 120 VAC duplex receptacles
- Chrome and brushed nickel fixtures

DAYHEAD (SALON)

- Custom vanity with marble countertop and undermount sink
- Wall mounted faucet
- Headhunter marine toilet
- Mirror
- Teak flooring
- Storage

FORWARD VIP HEAD

- Infiniti edge marble flooring
- Lighting low voltage AC halogen
- Power vent fan, 24 volt
- Shower panel system with multiple body sprays
- Shower with seamless glass enclosure
- Headhunter marine toilet
- Storage medicine cabinets
- Vanity with marble countertop and back splash
- Wall mounted soap dish, tumbler and tissue holder
- 120 vac duplex receptacles (GFI protected)

MAIN HELM

- Two (2) leather electric helm chairs
- Wood floor
- Adjustable glass cockpit

FORWARD EQUIPMENT ROOM

- Fresh water system- filters
- Access to forward stairs
- Access to AC units
- Access to isolation transformer
- Lighting/storage available
- Black water overboard discharge valve and pump

MECHANICAL

Air Conditioning System

- Six zone 92,000 BTU air conditioning system with air handlers and thermostats for each zone; touch pad controls
- Insulated copper piping supply and return lines
- Individual head exhaust fans

Bilge System

- 24 VDC automatic bilge pumps (1 aft, 1 fwd., 1 engine room)
- 24 VDC high-water alarm (1 aft, 1 fwd. 1 engine room)
- Two (2) Emergency bilge pumps, engine driven

Black Water System

- 100 US gallon black water storage tank
- Headhunter toilets
- Holding tank level indicator
- Dockside and pump out overboard

Grey Water System

- Sump box w/pump, 24V-shower/drains
- Sump box w/pump-air conditioning condensate drains

Central Vacuum System

Control & Instruments, Main Engines

- Volvo display all engines
- Station transfer panels
- Shift & throttle controls, electronic with engine sync
- Volvo joystick control for docking and slow speed maneuverability
- Volvo electronic steering
- Key switch start/stop
- Cockpit control station
- Joystick control Volvo
- Station transfer panels
- Start/stop panels
- Digital positioning system (new)

Engines & Transmissions

- Four (4) Volvo IPS 600 Systems
- Nibral duo-prop

Engine Room

- Epoxy coated engine room, white

- Flooring, metal diamond plate
- Volvo control panel for engines and drives
- Start/stop panels
- Station transfer panels
- Alarms
- Displays engine functions
- Freshwater hose & spigot
- Aft deck access
- Forward engine room stateroom access
- Lazzara engineered "ultra sound®" engine room
- Powered ventilation system

Exhaust System, Main Engines

Underwater, through drive units

Fire Extinguishing System

- Fire suppression system - automatic with engine shutdown, override and manual pull
- Carbon monoxide detectors in crew cabin and master head

Fresh Water System

- 200 US gallon potable water tank: FDA approved
- Aft deck shower - hot and cold
- Pressure water, MARC 5 240V w/24V back-up pump Diaphragm (Shurflow®)
- Water filtration system
- Water heater, 240V (30 gallon)
- Individual station water maintenance shutoff
- Anchor/foredeck wash down system - fresh water
- Aft wash down system
- Aft cockpit shower
- Dockside water inlet-aft deck

Fuel System

- 830 gallon fuel tank
- Four (4) fuel decontaminators
- Fuel filters:
 - 1 x 30 micron
 - 4 x 10 micron
 - 4 X FG/900
- Two (2) priming pumps electric
- Four (4) priming pump motors

Lube Oil System

Oil change system

Noise, Thermal and Vibration Control

- Lazzara engineered "Ultra Sound®" engine room system
- Interior "Isolation Dampening" System
- Thermo barrier foil

Sea Water Cooling System

- Three (3) sea strainers
- Seacocks on all underwater fittings
- Generator
- Air conditioning
- Watermaker

Steering System

- Volvo Electronic System
- Steering wheel with wood accent
- Volvo joystick, two (2) station

ELECTRICAL SYSTEMS

Exterior Lighting

- Overhead lights aft deck
- Navigation Lights:
- Forward steaming light
- Port I Starboard side running lights
- Stem running light
- Anchor light
- Exterior deck lights
- Aft deck, transom stairs
- Boat deck lighting
- Searchlight, chrome

Interior Lighting

- Overhead halogen lighting throughout (low voltage ac)
- Emergency 24 volt DC lighting

Generator x (2)

240V/60 cycle 23 kw Kohler diesel with sound shield (low RPM), remote start with muffler, freshwater cooling, fuel filter, seacock and seawater strainer

Electrical Grounding

- Bonding system with large zinc hull plate
- IPS with separate drive and hull zincs

Shore Power

- Glendinning cablemaster @ 100
- Amp/240V/60 cycle w/75' cord and wireless remote
- Isolation transformer, 240V/24 KVNIOO Amp
- Switchboards, Load Banks & Control Panels

- Batteries, (AGM) Group 31):
- 2 GPL 31 OOT for generator
- 8 GPL 31OOT/M for engines
- 2-GPL 40L for house
- Two (2) battery chargers (40 Amp Charles Chargers)
- Panel, AC main selector- 240V
- Panel, main distribution - AC/DC
- Lazzara engineered engine room DC distribution panel
- "Power Touch" load management control system

Wire and Cables

- All wire to approved specifications
- All cables marked with circuit number
- Wire chase runs throughout

ELECTRONICS SYSTEMS

- Alarms/Monitors
- Lazzara 64-channel ISIS 500 vessel monitoring system, including:
- Dynamic diagnostics
- One (1) 15" LCD monitor
- ECM output from engine monitor/alarm electronics
- Generator systems alarm/monitoring
- Tank level readout and alarms
- Fire Zone Alarm for engine room
- Bilge Alarms and pump run indication
- Auto fire discharge alarm
- Volvo engine alarms

Communications

- One (1) VHF Simrad RS-87 VHF Radio I Fog Hom I Hailer
- Telular cell phone GSM 850/1900 with 3db cell antenna
- Sea Key Telematics with SOS

Entertainment

Main Salon

- Toshiba 42" LCD TV
- Denon home theater virtual surround sound system
- oDVD DCCI Faroudja, progressive scan, two (2) three way 70 watt speakers and 140 watt sub

Master Stateroom

- Toshiba 32" LCD TV with DVD/CD player
- Omnimount, fast mount
- Sonance I port In wall docking system for iPOD map 350
- Sonance I port video upgrade kit
- Sonance I port remote (white)

Master Bath

- Sharp 15: AQUOS LCD TV 4:3 with tuner, speakers on bottom (silver) behind mirror
- Omnimount, small fast mount fixed for LCD

VIP Staterooms

- Toshiba 15" LCD TV with DVD
- Sonance I port In wall docking system for iPOD map 350
- Sonance I port video upgrade kit o
- Sonance I port remote (white)

Aft deck

- Two (2) speakers
- Crew optional
- Toshiba 15" LCD TV with DVD
- Omnimount, small fast mount fixed for LCD
- KVH G4 satellite antenna with two (2) receivers

Navigation Salon Helm Station

- Fully instrumented helm console, including electronic engine controls
- Two (2) single custom electric helm chairs, fully adjustable, leather (electric D/C)
- GPS/plotter/radar/sounder
- Nobeltec Admiral 8.1
- Garmin backup plotter
- Autopilot
- Simrad AP 26
- Compass displays
- Simrad IS15

- Three (3) 15" LCD displays
- Volvo speed/depth/temp
- Nobeltec Admiral 8.1
- Arch wing custom fiberglass, including mountings for:
 - Electronics
 - Antennas
 - Radar
 - Lighting
 - Horns
 - Navigational lighting

MAIN DECK OUTFITTING

- Anchor and Anchor Handling
- Anchor, stainless steel
- Anchor chain storage in forepeak locker
- Anchor chute, stainless steel
- Anchor wash down spigot with hose
- Windlass, chain with controls

Deck Hardware

- Air Horn
- Windshield wiper system 24 vdc
- pantograph type with washer system
- Lazzara custom 16" bow, spring and stem cleats, 316L stainless steel
- 1 W' stainless 316L steel rails on main deck
- Burgee staff, custom stainless steel, with burgee flag
- Forward hatch to bow cabin
- Acrylic panel with stainless steel LSX logo, fiber optic edge lit
- Logo, stainless steel
- Bulwark boarding doors port and starboard
- Teak aft deck and swim platform deck

Doors and Hatches

- Weather-tight engine room access
- Crew access hatch
- Foredeck access hatch
- Stainless steel aft main salon sliding door
- Aft deck bar with remote controlled hydraulic lift window
- Aft garage door hydraulically actuated
- Sliding hydraulic hardtop

Port lights and Windows

- Four (4) recessed hull windows
- Two (2) "Horizon" panoramic windows
- Main deck windows are tinted glass, laminated and chemically strengthened
- Helm windshield are high "Thermal E" glass, laminated and chemically strengthened

Rails, Ladders and Gangways

- Stainless steel (316L) round hand rails on all exterior decks
- Boarding ladder with handrail
- Solid PVC rubrail with stainless steel insert
- Swim ladder, hydraulic remote controlled system
- Bulwark doors port and starboard
- Aft stateroom ladder
- Storage Locker Foredeck
- Foredeck locker for line and fender storage

AFT DECK I TRANSOM OUTFITTING

Aft Deck

- Custom storage in deck (2014)
- Deck self-bailing
- Flooring, teak
- Lighting, indirect
- Aft stateroom access hatch
- Teak steps, star board access hatch for engine room
- Storage, side panels - port
- Table, corian, in cockpit
- Speakers, overhead
- Overhead cockpit lights
- Low level courtesy lights
- Aft deck bar with stools
- Ships bell
- Stainless steel baby gates
- Storage compartments
- LSX logo engraved on W' abrasion resistant acrylic panel with stainless steel frame-illuminated LED edge lit technology by Yachtsign
- Cockpit control station
- Joystick control Volvo
- Station transfer panels
- Start/stop panels

Aft Sport Deck

- Hydraulically operated garage door
- Garage to store tender

- Fresh water inlet
- Cable TV/phone connection
- Retractable cleats for tender
- Shore power cord outlet
- Engine room windows with standard glass

LAUNDRY CENTER

- Bosch stacked washer/dryer
- Linen closet

CONSTRUCTION

- GRP Composite Construction
- Hand-laid, "vacuum bagged" unidirectional fiberglass with balsa cored hull
- Hand laid, "vacuum bagged" E-glass and graphite balsa cored deck - one mold piece (patent pending)
- Solid fiberglass chine, center line and all hull penetration areas
- Blister resistant gelcoat under the waterline
- Vinylester resin for hull and deck
- Bottom paint
- High performance UV resistant exterior gelcoat
- Light weight balsa cored reinforced stringer system
- Light weight balsa cored bulkhead and floors, lower sole plywood
- Solid vinyl/PVC rub rail with stainless steel insert
- Quad engine stringer system

INTERIOR DECOR

The interiors are furnished through the use of standard materials and Standard Allowances that permit personalization of the Decor. A detailed list of the Standard Allowances will be provided during the initial design consultation. Selections are not limited to the Standards. Items that exceed the Standard Allowances will be charged for accordingly.

- Headliner
- Maji1ite Cachet
- Flooring
- Salon and staterooms: carpet
- Dayhead: teak
- Salon entry: teak
- Helm area: hardwood flooring
- Crew stateroom: hardwood flooring
- Master and VIP heads: marble
- Crew head: ceramic
- Galley: wood flooring

Wall Coverings

- Head walls: wallpaper
- Throughout - foam-backed wall fabric and/or vinyl

Furniture

- Salon: sofa, chair, and cocktail table:
- Master Stateroom: Joveseat, vanity chair;
- Galley: two (2) barstools and built-in settee

Window Treatments

- Pleated shades

Soft goods

- Choice of fabrics for bedspreads, shams, and throw pillows

Linens

- Four (4) sets of bath, hand, and face towels per head, one (1) bath mat per stateroom head, two (2) hand towels for day head, six (6) beach towels
- One (1) set of custom fitted cotton sateen sheets per bed, two (2) medium firm down sleeping pillows; two (2) sham pillows, pillow protectors for sleeping pillows, one (1) blanket and one (1) mattress pad per bed

Yacht Provisions

- Galley equipment, yacht equipment and housekeeping equipment provided
- Equipment includes cookware, bakeware, utensils, knives, and small appliances; table top service for eight (8) includes dinnerware, flatware, and glassware

Lighting

- In addition to overhead recessed lighting, included are master stateroom sconces, and VIP stateroom sconces

OTHER

- Manuals
- Lazzara Operational Technical manuals with as-built drawings
- Ship set of manufacturer's equipment manuals
- Lazzara Yacht University with three days training for owner and captain

Recent Upgrades

- Hull painted blue at factory May 2014
- Bottom Painted May 2014
- New carpet throughout boat 2014
- New Shore Power cord 2013
- **Volvo Warranty on motors and drives through December 2015**
- **Volvo Digital Positioning System**
- New TV Salon, FWD VIP, and Galley 2013
- Custom Storage in the fwd VIP sole
- New Sony Receiver with blue tooth 2013 main salon
- New FLIR camera 2013
- New House Batteries 2014
- New Master Volt Battery Charger 2014

Исключения

При продаже яхты исключаются личные вещи владельца.

Отказ от ответственности

Компания предоставляет описание судна или яхты добросовестно, но не может гарантировать точность этой информации, а также не ручается за техническое состояние. Покупатель должен проинструктировать своих агентов или оценщиков исследовать представленную информацию более подробно, по собственному желанию. Продажа судна или яхты, изменение цены или снятие с продажи будет происходить без предварительного уведомления.

ФОТОГРАФИИ



Salon



Salon



Salon



Salon



Salon



Galley



Galley



Galley



Galley



Dinette



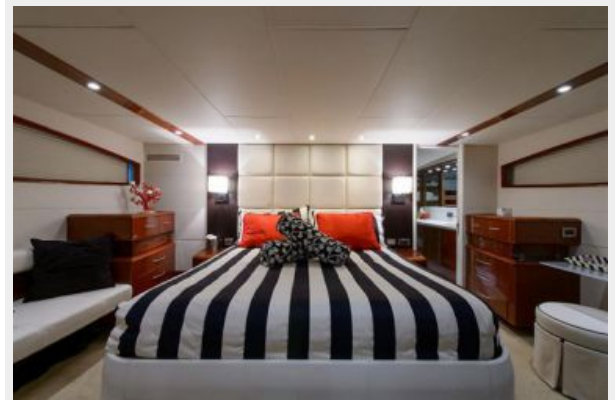
Dinette



Day Head



Master Stateroom



Master Stateroom



Master Stateroom



Master Stateroom



Master Head



Master Head



Master Head



Forward Stateroom



Forward Stateroom



Forward Stateroom



Forward Head



Port Guest Stateroom



Port Guest Stateroom



Port Guest Stateroom



Port Guest Stateroom



Port Guest Head



Starboard Guest Stateroom



Starboard Guest Stateroom



Starboard Guest Stateroom



Starboard Guest Head



Aft Deck



Aft Deck



Aft Deck



Aft Deck



Aft Deck



Aft Deck



Aft Deck



Aft Deck



Bow



Bow



Bow



Engine Room



Engine Room



Engine Room

Engine Room



Engine Room



КОНТАКТЫ

Андрей Шестаков (Andrey Shestakov) – ведущий яхтенный брокер отдела продаж яхт и судов компании Shestakov Yacht Sales Inc. Официальный представитель Shestakov Yacht Sales Inc. для русскоговорящих клиентов в центральном офисе компании в Майами/Форт Лодердейл/Флорида/США.

Контактная информация

Email: andrey@shestakovyachtsales.com

Web: shestakovyachtsales.com

Телефоны

Краснодарский край: **+7(918)465-66-44**

США, Майами, Флорида: **+1(954)274-4435**

Время работы

Понедельник – Суббота: **9:00 - 21:00**
EDT

Воскресенье: **Закрето**

Адрес



Harbour Towne Marina, 850 NE 3rd St,
STE 213, Dania, FL 33004