

## HI C'S — VIKING



**Судостроитель:** VIKING

**Год постройки:** 2008

**Модель:** Катер для спортивной рыбалки

**Цена:** **ЦЕНА ЯХТЫ ПО ЗАПРОСУ**

**Местонахождение:** Costa Rica

**Длина общая:** 74' 0" (22.56m)

**Ширина:** 19' 4" (5.89m)

**Макс. осадка:** 5' 6" (1.68m)

**Крейс. скорость:** 33 Kts. (38 MPH)

**Макс. скорость:** 40 Kts. (46 MPH)

Купить Hi C's — VIKING а также выбрать подходящую вам яхту из нашего каталога яхт вам поможет опытный яхтенный брокер Андрей Шестаков. На сегодняшний день компания Shestakov Yacht Sales Inc. имеет большое количество яхт в собственном списке продаж, а также тесно сотрудничает со всеми крупными яхтенными производителями по всему миру.

Для того чтобы купить яхту Hi C's — VIKING а также проконсультироваться по любому вопросу связанному с покупкой, продажей, чартером яхт позвоните по телефону **+7(918)465-66-44**.

# ОГЛАВЛЕНИЕ

ОГЛАВЛЕНИЕ	2
ХАРАКТЕРИСТИКИ	9
Обзор	9
Основная информация	9
Размеры	9
Скорость, вместимость и масса	9
Размещение	10
Корпус и палуба	10
Информация о двигателе	10
ПОДРОБНОЕ ОПИСАНИЕ	11
Salon	11
Salon Day Head	11
Galley/Dinette	11
Master Stateroom	12
Master Head	12
Forward Stateroom	12
Forward Head	12
Port Stateroom	13
Port Head	13
Starboard Stateroom Aft	13
Crew Stateroom	13
Crew Stateroom Head	14
Enclosed Flybridge	14
Cockpit	14
Hull, Deck and Exterior	15
Engine Room	16
Companionway	16
Decor	16

Electronics and Navigational	17
Custom Tower by Palm Beach Tower	20
Исключения	21
Отказ от ответственности	21
<b>ФОТОГРАФИИ</b>	<b>22</b>
Salon/Galley	22
Master Stateroom	22
Fighting Chair	22
Cockpit	22
Salon	22
Galley	22
Salon	23
Galley	23
Dinette	23
Galley	23
Galley	23
Custom galley backsplash	23
Recessed stove cooktop	24
Galley	24
Recessed stove cooktop	24
Galley	24
Galley	24
Stainless sink in galley	24
Subzero refrigeration/freezer units	25
Spiral staircase to enclosed bridge	25
Galley/dinette	25
Custom bar stools	25
Master Stateroom	25
Master Stateroom	25

---

Master Stateroom	26
Master Stateroom TV	26
Master Head	26
Master Head	26
Master Head	27
Master Head	27
Companionway	27
Companionway	27
Washer/Dryer	28
Forward Stateroom	28
Forward Stateroom	28
Forward Stateroom	28
Forward Head	29
Forward Stateroom	29
Forward Head	29
Crew stateroom	29
Crew stateroom engine room access	30
Crew stateroom	30
Crew Head	30
Port Stateroom	30
Port Stateroom	31
Port Stateroom	31
Port Stateroom	31
Starboard Stateroom	31
Starboard Stateroom	32
Head/Shower	32
Shower	32
Head	32
Forward Stateroom Head	33

---

Head	33
Master Head	33
Cockpit/Fighting Chair	33
Cockpit/Fighting Chair	34
Mezzanine	34
Tuna Tubes	34
Mezzanine	34
Mezzanine AC	35
Cockpit	35
Storage	35
Custom Electric Grill	36
Cockpit	36
Release Marine Fighting Chair	36
Engine Room Access	36
Tackle Drawers	37
Cockpit	37
Transom View	37
Cockpit/Mezzanine	37
Cockpit	37
Cockpit	38
Cockpit	38
Encosed Flybridge	38
Encosed Flybridge	38
Encosed Flybridge	38
Dinette	38
Encosed Flybridge	39
Encosed Flybridge	39
Encosed Flybridge	39
Encosed Flybridge	39

---

Helm	39
Helm	39
Helm	40
Helm	40
Helm	40
Electronics	40
Enclosed Bridge Seating	40
Helm seating	40
Helm	41
Electronics	41
Electronics	41
Electronics	41
Electronics	41
Electronics	41
Helm Seating	42
Aft Flybridge Access	42
Enclosed Bridge Subzeros	42
Salon	42
Salon	42
50 Inch Pop Up Flatscreen	42
Touch Screen Crestron System	43
Dinette Salon View	43
Salon	43
Salon	43
Salon	43
Salon	43
Aft Flybridge Seating	44
Aft helm Station	44
Teak Step Ladder	44

---

---

Teaser Reels	44
Engine Room	45
Mezzanine/Aft Flybridge	45
Engine Room	45
Engine Room	45
Starboard Onan Generator	45
Port Onan Generator	45
Engine Room	46
Engine Room	46
Engine Room	46
Watermaker	46
Engine Room	46
Hydraulic Windlass	46
Shower	47
Anchor Locker Washdown	47
AV System	47
AV System	47
Crestron touch screen remote	47
Tower Helm	47
Tower Electronics Box	48
Bow Thruster Button	48
Tower	48
Tower to Bow View	48
Tower Bench Seating	48
Profile	49
Profile	49
Profile	49
Profile	49
Profile	49

---

---

КОНТАКТЫ	50
-----	-----
Контактная информация	50
-----	-----
Телефоны	50
-----	-----
Время работы	50
-----	-----
Адрес	50
-----	-----



# ХАРАКТЕРИСТИКИ

## Обзор

This must see 74' Viking Enclosed Bridge Convertible is truly one of a kind. Built with MTU 2,400 horsepower engines, the popular 5 stateroom layout, and extra fuel tank capacity, this yacht has the ability to travel long distances at a fast pace with more room for comfort. This yacht is in excellent condition and was built under the watchful eye of the captain with the specifications of an experienced yacht owner. This professional collaboration of captain and owner has made this vessel special. Built for both fishing and cruising this yacht is equipped with top of the line amenities. A few of these enhancements include a teak deck by Teak Sheik and tower by Palm Beach Towers. Also, this yacht includes an extensive electronics package by Atlantic Marine Electronics, and an extremely impressive, easy to operate audio visual equipment by Audio Visual Excellence, Inc. This Viking is beyond compare, and a personal inspection will exceed your expectations.

## Основная информация

**Тип судна:** Катер для спортивной рыбалки

**Подкатегория:** Convertible

**Модельный год:** 2008

**Год постройки:** 2008

**Страна:** Costa Rica

## Размеры

**Длина общая:** 74' 0" (22.56m)

**Ширина:** 19' 4" (5.89m)

**Макс. осадка:** 5' 6" (1.68m)

## Скорость, вместимость и масса

**Крейс. скорость:** 33 Kts. (38 MPH)

**Макс. скорость:** 40 Kts. (46 MPH)

**Водоизмещение:** 135000 Pounds

**Вместимость воды:** 385 Gallons

**Объем топливного бака:** 3000 Gallons

## Размещение

---

Всего кают: 5

## Корпус и палуба

---

Материал корпуса: Fiberglass

## Информация о двигателе

---

Двигатели: 2

Производитель: MTU

Модель: 16V2000M93

Тип двигателя: Inboard

Тип топлива: Diesel

---

# ПОДРОБНОЕ ОПИСАНИЕ

---

## Salon

---

- Moritz electrical panel
- Day head forward of galley
- Hi lo teak cocktail table
- Power sliding salon door
- Dimmers on dinette overhead lights
- 50" pop up plasma TV
- Audial alarms for power loss
- Wine cooler
- Speakercraft aluminum cone woofer
- IPAD handheld remote
- Custom J shaped salon sofa with storage underneath
- Counter weighted movable bar stools

## Salon Day Head

---

- Mirrored ceiling
- Custom Amtico flooring
- Towel bars and rings
- Satin nickel faucet
- Granite vanity top "Sahara Gold"

## Galley/Dinette

---

- Sharp 32" LCD HDTV above dinette
- Trash compactor
- Custom teak and holly amtico flooring
- Granite countertop "Sahara Gold"
- Satin nickel faucet
- Recessed undermounted cooktop
- Kenmore clear icemaker
- Square dinette and teak divider between dinette and salon sofa
- Subzero refrigeration and freezers
- U-shaped dinette with storage underneath
- Stainless sink
- Recessed cooktop

---

## Master Stateroom

---

- Tempurpedic mattress
- Additional telephone outlet
- Teak end tables
- Granite vanity top
- 32" flatscreen sharp LC32D62U TV
- Wall sconces at end tables
- Full length mirror on the back of hanging locker
- IPAD handheld remote
- Speakercraft aluminum cone woofer
- 8" 200W powered subwoofer
- Xantech Audio Video 6 Way Distribution Amplifier
- 32" flatscreen TV
- Drawer storage
- Ensuite head

---

## Master Head

---

- Custom wallpaper
- Custom antico flooring with cherry finish
- Satin nickel shower fixtures
- Granite vanity top "Sahara Gold"
- Mirror ceiling
- Mirrored linen closet
- Large shower

---

## Forward Stateroom

---

- Centerlined queen berth
- Custom wallpaper
- Orthopedic mattress
- Sharp 26" LCD HDTV
- IPAD handheld remote
- Speakercraft aluminum cone woofer
- Mirrored forward bulkhead
- Cabinet and drawer storage
- Ensuite head

---

## Forward Head

---

- Custom wallpaper
- Mirror ceiling
- Custom Amtico flooring with cherry finish
- Satin nickel shower fixtures
- Granite vanity top "Sahara Gold"
- Brushed aluminum shower door

---

## Port Stateroom

---

- Orthopedic mattress
- Teak locker storage
- IPAD handheld remote
- Speakercraft aluminum cone woofer
- Over/under berths
- Sharp TV

---

## Port Head

---

- Mirror ceiling
- Teak face on lower vanity
- Custom Amtico flooring with cherry finish
- Chrome shower door
- Satin nickel shower fixtures
- Brushed nickel towel bars and rings
- Satin nickel faucet
- Granite vanity top "Sahara Gold"

---

## Starboard Stateroom Aft

---

- Over under berths
- Orthopedic mattress
- Teak locker top
- Crestron MiniLCD handheld remote
- Speakercraft aluminum cone woofer

---

## Crew Stateroom

---

- Orthopedic mattress
- Additional telephone outlet
- Teak drawer storage

- Cabinets in crew head
- IPAD handheld remote
- Flatscreen TV
- Private head
- Storage
- Engine room access

---

## Crew Stateroom Head

---

- Mirror ceiling
- Custom Amtico flooring with cherry finish
- Teak face on lower vanity
- Chrome frame shower door
- Satin nickel shower fixtures
- Brushed nickel towel bars and rings
- Satin nickel faucet
- Granite vanity top "Sahara Gold"

---

## Enclosed Flybridge

---

- Electronic trolling valves
- Single Stidd ultra leather helm chair
- Costa aft station canvas cover
- Spiral staircase to bridge
- Smartline engine controls
- Top mount controls for aft station
- Cocktail table
- Tri-color red, white, and blue lights
- Subzero refrigerator unit
- Sharp 26" LCD HDTV
- IPAD handheld remote
- Speakercraft aluminum cone woofer
- Velodyne powered subwoofer
- Five monitors and custom keypad
- Crestron Isys G-Series 12" touchpanel
- Polypaner speakers (8" platinum round marine grade)
- Aft helm station with engine controls and electronics-Costa aft station canvas cover
- Port and starboard seating
- L-shaped seating

---

## Cockpit

---

- Mezzanine seating with AC
- Custom teak mezzanine cockpit decking by Teak Sheik
- **Two** Eskimo ice machines with discharge into cockpit sole box and fish box
- Awlgrip lazarette
- Rope lights in blue
- Two 24V Hubbell weatherproof receptacles
- Transom swim steps
- Custom electric grill in tackle center
- Transom fish box fitted with 6 tuna tubes
- Additional freezer under mezzanine seat
- Additional macerator with separate drain for fish box
- Dockside water connection
- Fresh water wash down
- Tee in dockside water manifold to fill from cockpit
- Polypaner speakers (8" platinum round marine grade speaker)
- Polyplaner flush mount 10" powered subwoofer
- SpeakerCraft outdoor elements speakers
- In deck livewell
- Release Marine Fighting Chair
- Spare props and prop boxes
- Full cockpit cover with sides
- Teak step ladder to bridge
- IPAD remote
- Custom fish box lid

---

## Hull, Deck and Exterior

---

- Snow White hull with custom painted black mask
- Boot strip Viking black
- Windlass Lewmar V4 stainless steel hydraulic with gypsy and drum
- Additional fuel tank for total capacity of 3,100 gallons
- Hydraulic bow thruster
- Prop pockets to reduce draft
- Fiberglass side thru hulls
- Underwater exhaust system
- Fuel fills port and starboard
- Directly overboard thru holes for head
- Awlgrip forward bilge
- Awlgrip anchor locker
- Rub rail painted to match gel coat
- Handrail under mounted on bridge side
- Deck fill for fresh water tank
- Stainless steel pistons on anchor locker

- Spare props

## Engine Room

---

- Access door to crew quarters
- Awlgrip painted brass thru-hulls & sea strainers
- Dual power steering pumps
- Headhunter freshwater pump
- Generator gas and water separators
- Charles autophase C-power shore power transformers
- Thru hull for AC in front of starboard engine
- Two self-priming AC pumps
- Additional coolant pump for second Eskimo ice machine
- Upgraded Cruisair cooling pumps
- Petcock in bottom of racors for draining
- Remotes for Eskimo ice machine in engine room entrance
- Additional switch pan electric in engine room with five switches
- Cockpit refrigeration/freezer thermostats
- **Two** Onan generators (Port: 3691 hours, Starboard: 3710 hours)
- Watermaker
- Two Eskimo ice machines
- Engine room cameras

## Companionway

---

- Vertical teak strips between wall panels
- Custom locker for linens
- Teak doors for both closets
- Stacked washer/dryer units
- Access to staterooms

## Decor

---

- Upgraded ultraleather buckskin style sofa
- Wrapped hatch carpet
- Custom wallpaper and wallpaper material
- Brushed nickel interior hardware
- Brushed nickel coverplates for switches and receptacles
- Light trim satin nickel interior
- Storage in arm of sofa
- Picture frame molding for heads



- Flybridge jumpseat and bench seat in ultraleather buckskin
- Three ultraleather barstools with teak bottoms

## Electronics and Navigational

---

- Custom electronics package from Atlantic Marine Electronics
- Radar system
- 25 KW commercial radar with ARPA
- DVI-RGB converter
- Radar open array antenna
- 19" LCD monitor

### Primary Navigation System

- New Navnet 3D processor
- GPS WAAS receiver
- Additional BB keypad
- Port side Navnet
- 19" LCD monitor

### Navigation/Weather PC System

- 19" LCD monitor
- Wireless RF mouse
- Mini RF keyboard
- Live satellite weather system
- On water premium package kit
- Navigation software suite
- USB GPS antenna

### Interfacing peripherals

- NMEA combiner with USB
- NMEA splitter/amplifier

### Navnet 3D Color Video Sounder System

- New Navnet 3D processor
- additional BB keypad
- Dual frequency black box fishfinder
- GPS WAAS receiver
- Additional BB keypad
- 15" LCD monitor
- 28KHZ 2KW transducer
- 200KHZ 2KW transducer

## Satellite Communications System

- 28" fiberglass dome mount

## Cordless Phone System

- 4 line cordless base system
- 4 line system with additional handsets

## SSB Antenna for Loran

- 16' SSB antenna
- Antenna mount

## Maretron Monitoring System

- NMEA 2000 monitoring software
- NMEA 2000-USB gateway
- Ultrasonic wind/weather sensor
- NMEA 2000 tank sensor adapter
- NMEA 200 T drop connectors
- NMEA 2000 2M cables
- Connectors for engine diagnostic port

## Satellite TV System

- Tri-Americas Hi-Def dish and LNB

## Stateroom Televisions

- 20" sharp LCD TV
- 26" TVs in forward stateroom and bridge
- 32" TV in salon

## Office Machine

- Fax, copy, scan, print
- Wireless capability bridge
- 110V outlet, fax, and network
- Outlets in cabinet

## Navnet system peripherals

- Network hub adapter
- 5MTR 6PF-6PF network cable
- 10 meter navnet cable
- 6PF NMEA data cable
- Secondary depth/water temp/NMEA display

- Digital depth display
- 235KHZ depth transducer

### **Autopilot System**

- Autopilot with 5" display
- Autopilot bow thruster interface
- Hydraulics, RFB, compass mount

### **VHF Communications**

- VHF black
- Flush mount kit
- 16' VHF antenna
- Antenna mount
- Hailer horn
- VHF second station remote
- VHF black ICOM
- Salon VHF command MIC
- 5" hailer speaker

### **AIS Transponder System**

- Universal AIS system
- 4' AIS/VHF antenna
- Interface to radar and navnet system

### **Searchlight (2)**

- 24 volt dual lamp spotlight

### **Thermal/Low light Imaging System**

- Thermal and low light camera

### **Camera System**

- 15" LCD monitor
- Engine room camera
- Camera mount
- 4 camera quad video switcher

### **Aft Station**

- 12" LCD monitor
- VHF second station remote
- Extension cable
- Secondary autopilot control

- New Navnet 3D

## Tower

- 12" LCD monitor
- VHF second station remote
- Extension cable
- Secondary autopilot control
- VHF black
- 16' VHF antenna
- Antenna mount
- 5" hailer speaker
- Hailer horn mounted under gunwale in cockpit connected to tower VHF
- Teaser reel remote panel
- New Navnet 3D

## Custom Tower by Palm Beach Tower

- Tuna tower 74' Enclosed Bridge, 2-1/2 bow legs, brushed pipe, 7' gap, (4) antenna stand-offs
- Center ladder
- Molded standing platform
- (2) quartz light molded 110V with stainless steel bezel, aft
- (2) quartz light 110V molded forward platform with stainless steel bezel in 3 in 1 pod
- Molded recess in forward center quartz light pod for hailer horn
- Control box 65" custom pod style with recessed electronics boxes and fiberglass pedestal mount
- Tower sunshade molded with painted oval center tube, 3 welded
- Antenna mounts
- Antenna molded fiberglass SAT TV dome
- Stern light molded into bridge overhang and hooked up
- 4 hook up quartz lights
- Anchor light on sunshade and masthead light under
- Control box, wired
- 43' outriggers Rupp, "Big Riggs" 43' 3 spreader bridge release
- Heavy aft bar
- Rigger locks
- Center rigger rupp
- Bridge rail 3 sided, double aft 1-1/4" pipe
- 10 rod holder polished weld to rail foil style
- Controls and steering electronic, MTU Smartline M93
- Pod style, single lever
- (2) single lever stainless steel control handles with bow thruster switches

- Nav lights molded into platform
- Trim tab switch on control box
- Bench seat with backrest, custom size and design
- Flag staff under each side platform perimeter rail
- Bond tower
- (2) V series I2 system LED lights dual color (white,blue) tower sunshade center bar
- Wire dual color V series LED lights tower sunshade
- Eisenglass panel
- Bow thruster control on control box

## Исключения

---

При продаже яхты исключаются личные вещи владельца.

## Отказ от ответственности

---

Компания предоставляет описание судна или яхты добросовестно, но не может гарантировать точность этой информации, а также не ручается за техническое состояние. Покупатель должен проинструктировать своих агентов или оценщиков исследовать представленную информацию более подробно, по собственному желанию. Продажа судна или яхты, изменение цены или снятие с продажи будет происходить без предварительного уведомления.

# ФОТОГРАФИИ

**Salon/Galley**



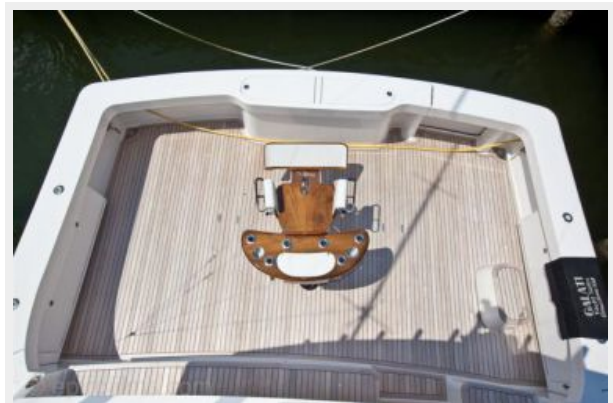
**Master Stateroom**



**Fighting Chair**



**Cockpit**



**Salon**



**Galley**



**Salon**



**Galley**



**Dinette**



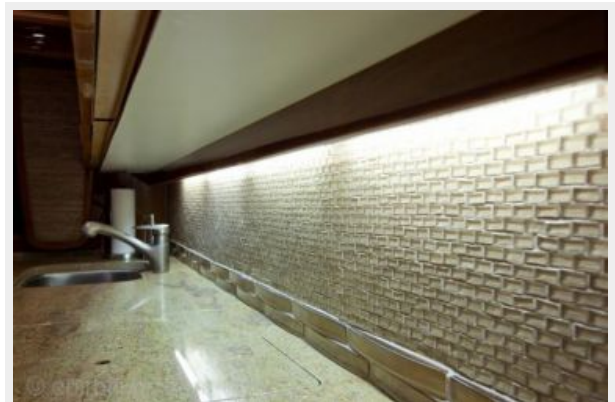
**Galley**



**Galley**



**Custom galley backsplash**





**Recessed stove cooktop**



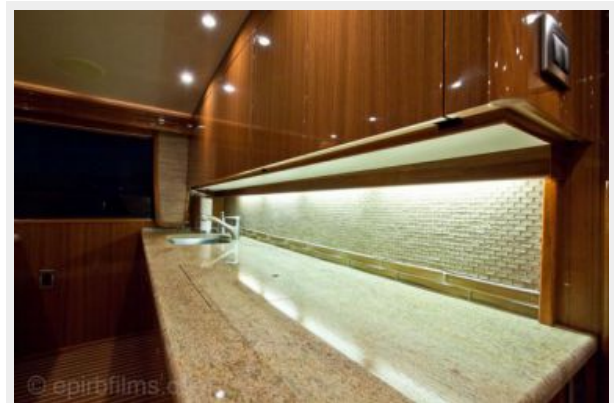
**Galley**



**Recessed stove cooktop**



**Galley**



**Galley**



**Stainless sink in galley**





**Subzero refrigeration/freezer units**



**Spiral staircase to enclosed bridge**



**Galley/dinette**



**Custom bar stools**



**Master Stateroom**



**Master Stateroom**



### Master Stateroom



### Master Stateroom TV



### Master Head



### Master Head



**Master Head**



**Master Head**



**Companionway**



**Companionway**





**Washer/Dryer**



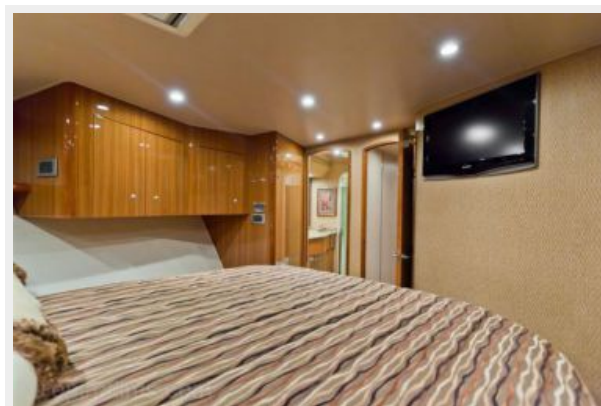
**Forward Stateroom**



**Forward Stateroom**



**Forward Stateroom**



**Forward Stateroom**



**Forward Head**



**Forward Head**



**Crew stateroom**



**Crew stateroom engine room access**



**Crew stateroom**



**Crew Head**



**Port Stateroom**





**Port Stateroom**



**Port Stateroom**



**Port Stateroom**



**Starboard Stateroom**



**Starboard Stateroom**



**Head/Shower**



**Shower**



**Head**





**Head**



**Forward Stateroom Head**



**Master Head**



**Cockpit/Fighting Chair**



**Cockpit/Fighting Chair**



**Mezzanine**



**Tuna Tubes**



**Mezzanine**





**Mezzanine AC**



**Cockpit**



**Storage**





### Custom Electric Grill



### Cockpit



### Release Marine Fighting Chair



### Engine Room Access



### Tackle Drawers



### Cockpit



### Transom View



### Cockpit/Mezzanine



### Cockpit



**Cockpit**



**Cockpit**



**Encosed Flybridge**



**Encosed Flybridge**



**Encosed Flybridge**



**Dinette**





**Enclosed Flybridge**



**Enclosed Flybridge**



**Enclosed Flybridge**



**Enclosed Flybridge**



**Helm**



**Helm**



**Helm**



**Helm**



**Helm**



**Electronics**



**Enclosed Bridge Seating**



**Helm seating**





Helm



Electronics



Electronics



Electronics



Electronics



Electronics



**Helm Seating**



**Aft Flybridge Access**



**Enclosed Bridge Subzeros**



**Salon**



**Salon**



**50 Inch Pop Up Flatscreen**





**Dinette Salon View**



**Touch Screen Crestron System**



**Salon**



**Salon**



**Salon**



**Salon**



**Aft Flybridge Seating**



**Aft helm Station**



**Teaser Reels**



**Teak Step Ladder**





**Mezzanine/Aft Flybridge**



**Engine Room**



**Engine Room**



**Engine Room**



**Starboard Onan Generator**



**Port Onan Generator**



**Engine Room**



**Engine Room**



**Engine Room**



**Watermaker**



**Engine Room**



**Hydraulic Windlass**





**Anchor Locker Washdown**



**Shower**



**AV System**



**AV System**



**Crestron touch screen remote**



**Tower Helm**



**Tower Electronics Box**



**Bow Thruster Button**



**Tower**



**Tower to Bow View**



**Tower Bench Seating**





**Profile**



**Profile**



**Profile**



**Profile**



**Profile**



# КОНТАКТЫ

---

Андрей Шестаков (Andrey Shestakov) – ведущий яхтенный брокер отдела продаж яхт и судов компании Shestakov Yacht Sales Inc. Официальный представитель Shestakov Yacht Sales Inc. для русскоговорящих клиентов в центральном офисе компании в Майами/Форт Лодердейл/Флорида/США.

## Контактная информация

---

Email: [andrey@shestakovyachtsales.com](mailto:andrey@shestakovyachtsales.com)

Web: [shestakovyachtsales.com](http://shestakovyachtsales.com)

## Телефоны

---

Краснодарский край: **+7(918)465-66-44**

США, Майами, Флорида: **+1(954)274-4435**

## Время работы

---

Понедельник – Суббота: **9:00 - 21:00**  
EDT

Воскресенье: **Закрето**

## Адрес

---



Harbour Towne Marina, 850 NE 3rd St,  
STE 213, Dania, FL 33004