

TALISKER — OCEAN ALEXANDER



Builder: OCEAN ALEXANDER

Year Built: 2010

Model: Motor Yacht

Price: PRICE ON APPLICATION

Location: United States

LOA: 68' 0" (20.73m)

Beam: 20' 0" (6.10m)

Max Draft: 5' 0" (1.52m)

Cruise Speed: 12 Kts. (14 MPH)

Max Speed: 19 Kts. (22 MPH)

Our experienced yacht broker, Andrey Shestakov, will help you choose and buy a yacht that best suits your needs **Talisker — OCEAN ALEXANDER** from our catalogue. Presently, at Shestakov Yacht Sales Inc., we have a wide variety of yachts available on our sale's list. We also work in close contact with all the big yacht manufacturers from all over the world.

If you would like to buy a yacht **Talisker — OCEAN ALEXANDER** or would like help answering any questions concerning purchasing, selling or chartering a yacht, please call **+1(954)274-4435**

TABLE OF CONTENTS

TABLE OF CONTENTS	2
SPECIFICATIONS	4
Basic Information	4
Dimensions	4
Speed, Capacities and Weight	4
Accommodations	4
Hull and Deck Information	4
Engine Information	5
DETAILED INFORMATION	6
Engine	6
Hull, Superstructure & Decks	6
Hardware & General Equipment	7
Control & Navigation	8
Electrical	9
Engine Room & Bilge	9
Accommodations & interior	11
Pilothouse	11
Salon	12
Master Stateroom	12
VIP Stateroom	12
Port Guest Stateroom	13
Crew/Guest Quarters	13
Heads	13
Galley	14
Exclusions	14
Disclaimer	15
Exclusions	15
Disclaimer	15

PHOTOS	16
CONTACTS	26
Contact details	26
Telephones	26
Office hours	26
Address	26

SPECIFICATIONS

Basic Information

Category: Motor Yacht

Sub Category: Pilothouse

Model Year: 2010

Year Built: 2010

Country: United States

Dimensions

LOA: 68' 0" (20.73m)

Beam: 20' 0" (6.10m)

Max Draft: 5' 0" (1.52m)

Speed, Capacities and Weight

Cruise Speed: 12 Kts. (14 MPH)

Max Speed: 19 Kts. (22 MPH)

Displacement: 132000 Pounds

Water Capacity: 350 Gallons

Holding Tank: 100 Gallons

Fuel Capacity: 2000 Gallons

Accommodations

Total Cabins: 4

Total Heads: 4

Hull and Deck Information

Hull Material: Fiberglass

Engine Information

Engines: 2

Manufacturer: Caterpillar

Model: C-18

Engine Type: Inboard

Fuel Type: Diesel

DETAILED INFORMATION

Engine

Caterpillar Extended Warranty till 2016

2 x Caterpillar C-18 (1000hp Each) Port 580, Starboard 583

2 x Generator: Northern Lights 25KW (439 hours)

All machinery services Fall 2014

Hull, Superstructure & Decks

- Carbon fiber-infused composite hull and decks
- Longitudinal and lateral fiberglass stringers filled with high density foam
- Fiberglass with infusion and “vacuum bag technology”
- White gelcoat on exterior
- Airex® C70.90 PVC foam construction above waterline (closed cell, cross-linked polymer foam w/ highest elongation in its class for great impact strength. Sound and temperature insulation w/ self extinguishing properties)
- **BLUE boot top stripe NEW**
- Tempered and safety glass
- Frameless window
- Two coats of Seahawk or equal primer, an epoxy barrier coat and covered with two coats of Seahawk or equal anti-fouling bottom paint
- Deck, superstructure and fly bridge with AL600 aluminum I-beam reinforcements
- Interior structural components all bonded to hull
- Reinforced collision bulkhead
- Hard top w/ dual hatches for ventilation and light
- Interprotect epoxy based antifouling/ anti osmosis system
- LED Courtesy lights, lower deck and FB
- **Custom FB seat w/ storage underneath NEW**
- Vinylester resin
- **AWLGRIP - Whisper Grey painted non-skid decks NEW**
- Swimming ladder
- **Fiberglass settee with custom teak table on aft deck NEW**
- **Sunbrella® fabric on outside cushions NEW**
- Side boarding gates in cockpit
- Wet bar with sink and bar refrigerator on FB
- **INFRARED BBQ on Flybridge NEW**
- **Teak swim platform w/teak steps NEW**
- **Teak deck for cockpit**

- **Teak side deck**
- **400' QUICK Flat line for stern ties NEW**
- **ULTRA SONIC Anti-Fouling System NEW**
- **Custom Fiberglass Seat with Gasoline Storage on Flybridge NEW**
- **FREEMAN Anchor Locker Hatch NEW**
- **14' Novurania with 60HP 2 stroke Evinrude**
- **Tender Towing Bridle NEW**
- **CUSTOM BARRETT Fly-Bridge Enclosure NEW**
- **Custom Sunbrella covers for all exterior furniture**

Hardware & General Equipment

- Sakura steering wheel inside & S/S on FB
- 2" elliptical S/S handrails on main deck, 1-1/2" on FB
- S/S cleats & hawse holes
- S/S anchor roller
- S/S swivel anchor light bracket
- **HUMPHREE ATOS- Interceptor Trim Tab System**
- MAXWELL VRC4000 windlass
- **Custom anchor/chain wash down system (NEW)**
- Fresh-water wash down, at bow & stern
- S/S salon door to aft deck
- Keypower® hydraulic stabilizers
- Pantograph doors in Pilothouse
- Keypower hydraulic bow thruster 36HP, stern 25HP w/proportional control
- High performance, computer-designed and machined class "S" propellers
- Fresh water wash down in FB
- Propeller shafts, Aquatech 22HS
- Bronze through-hull fittings
- Zincs on rudders, shafts & Transom (Custom spare on board)
- Teak bow and stern staffs
- Lighted OA logo
- Stidd® Electric helm chair in PH (Off white) x 2 (NEW)
- Stidd® Mechanical helm seats in FB (white) x2
- Bronze struts w/ cutlass bearing
- S/S rudders
- Aft deck shower, dock-side water inlet
- **5 x HEPWORTH Wiper Control NEW with spare IMTRA blades NEW**
- Pyrotek and lead foam sound and vibration insulation
- **Three U-shaped rails on swim step, extra set of placement holes for when one rail is removed**
- **Custom S/Steel poles that is mounted in the staple rail holders to prevent tender being crushed under swimstep**

- **Custom Downrigger and mounts on staple rails (NEW)**
- **132lb ULTRA Anchor w/swivel NEW**
- **450 ' 3/8 high tensile S/Steel chain (NEW)**
- **Chain is calibrated NEW**
- Steelhead SM 2000R davit
- 8 x COLOR OCEAN LED Underwater Lights NEW - See pictures

Control & Navigation

- **8 x GARMIN 8530 Black Box Navigation NEW**
- **8 x 17" GARMIN Displays (Touch-screen) NEW**
- **GARMIN Grid Controllers at Lower Helm and Flybridge NEW (Mounted in STIDD armrest)**
- **2 x GARMIN 300 Black Box VHF w/wireless remote NEW**
- **WESMAR HD825 Forward Looking Sonar NEW**
- **FLIR VOYAGER III with lower and upper helm control NEW**
- **GARMIN 604x HD RADAR NEW - Enclosed**
- **GARMIN Depth Sounder NEW**
- **GARMIN AIS NEW**
- **GARMIN Auto-pilot (Lower helm and Upper helm Controls)**
- **WAVE WiFi MBR 400 Router for WiFi Access NEW**
- **Alarm System for Smoke, High Water in bilge, Low battery, Shore Power NEW**
- **KVH HD7 Satellite Antenna NEW**
- **5 x HD Receivers NEW**
- **7 Zone SONOS Audio System NEW**
- **YACHTCONTROLLER Wireless Remote NEW "Take" available at both Lower and Upper helms**
- **ACR RCL-600 Remote Control Spotlight NEW**
- **IRIDIUM Satellite Phone with external antenna NEW**
- **MARETRON N2K Black Box Software NEW**
- **IPAD AIR at both Helm to run MARETRON w/docking station N2K NEW**
- **6 x HD IP Cameras NEW**
- **LED Floodlights on Hardtop NEW**
- **MINI Ipad with ships systems and inventory**
- Maretron DSM250 at both helms
- Simrad AP28 Autopilot System- Back-up
- Engine alarm system, audio oil and temperature
- Engine hour meter
- Complete CATERPILLAR engine instrumentation
- Hydraulic steering system
- GLENDINING engine control
- Third control in aft deck (engines and thrusters)
- Wet exhaust and including water temperature, oil pressure, hour meter and start/ stop

controls in engine room and remote start/ stop controls in the pilothouse

- International navigation lights
- Heavy-duty Kahlenberg® dual air horn
- **Multi-tone horn on Flybridge NEW**
- **Power steering system**
- **Second stabilizer monitor in FB**
- **Humphree trim tabs Interceptor with automatic trip optimization system. (ATOS)**

Electrical

- **VICTRON house battery bank (1800 Amp hours) NEW**
- **100 Amp House Bank Charger NEW**
- **MARETRON battery monitor NEW**
- **2 x KING Electric Heaters in Fly-bridge NEW**
- **Intellegent Shore Power Adaprtor NEW**
- **VICTRON 5000kW Inverter with 120Amp Charger NEW**
- Proportional thrusters control
- Battery paralleling system with control switch
- Service battery switch
- 4000W inverter/ charger (pure sine wave)
- Vimar™ switches and outlets
- 24V lights in all compartments
- Octoplex (based on US military technology) for remote control, activation and monitoring of AC/ DC breakers. Includes auto switching for emergency back up locals. Tank monitoring included.
- Cellular amplifier
- **Chain counter X 2**
- AC outlets throughout
- Marine-grade, tinned copper wiring
- Bonding system throughout
- Octoplex® System with AC/ DC sub-panels in several position
- Shore power receptacle 100+50AMP in transom w/cable master
- Phone jacks at MSR & salon & PH
- Dimmers for salon and MSR sconces
- NMEA2000 BACKBONE w/ AC/ DC power installed (for future electronics / equipment communication network)

Engine Room & Bilge

- Headhunter™ pressure fresh-water system
- One manual bilge pump
- S/S cap on transverse stringers in central walkway

- One 40-gallon water heaters
- 24V shower sump pumps
- Dripless seal for rudder post
- Aluminum fuel tanks with sight gauges
- S/S water tank w/ sight gauge
- The vessel's bonding and grounding systems shall include copper straps secured to the hull and running the full length of the vessel parallel to centerline. Engines, generators, metallic through hulls, strainers, and pump bodies shall be connected to the bonding strap using 8 AWG wire minimum or equivalent
- Engine room high water bilge alarm
- All engine room and machinery spaces top coated with polyurethane paint system.
- Emergency bilge system – The vessel shall be outfitted with automatic bilge pump with manual and automatic switches in each space as divided by watertight bulkheads. High water alarms will be mounted in each of these bilge zones
- Holding tank plumbed dock side for overboard discharge
- Delta T intake/ exhaust fans with variable frequency drives shall be mounted to facilitate the pushing and/or pulling of air through the machinery spaces and the providing of a high rate of air exchange. Ducts shall have fire dampers installed with manual/ automatic triggering which shall be tied into the machinery shut down circuits. Ducts in way of interior living space shall be insulated and soundproofed. System of Delta-T water separator grilles used on intake and exhaust sides of system
- Dripless engine shaft seal logs
- Fresh-water outlet with hose for engines & generator
- Sea cocks and raw water strainers on all intakes
- Engine room 3" sound insulation
- Racor® fuel/water separators
- Both side fillers for water & fuel tanks
- S/S rail on side of engine
- Engine battery isolation switches
- Heron® rubber flooring in engine room
- AC/ DC lights with anti-explosion type in engine room
- AC outlet
- Color-coded piping for fuel, water and hydraulic system
- Underwater exhaust system
- Lighted bilge
- Four electric bilge pumps, 24V auto & manual switch, sumped when available
- 2 x 25kW NORTHERN LIGHTS Generators with gas/ water separator
- 3 valves in steering system for autopilot
- S/S engine beds
- Spare conduit running from engine room to PH, engine room to FB and engine room to FB overhang
- Detailed stringers in engine room and lazarette
- Dry bilge area arrangement in center of engine room
- Holding tank gauge in PH w/ air filter for holding tank

- Generator set resiliently mounted and installed with sound shield
- Refrigerant type is accepted worldwide under the Montreal Protocols
- Generator exhausts water-drop type per “Centek”, “Marine Exhaust Co.”
- Emergency bilge system – The vessel shall have a stand-alone emergency bilge pump in the machinery space
- Common drainage system for sink, shower, bilge & exterior deck
- **Sea Chest**
- **Shower and sink sumps are new and were relocated for easier maintenance NEW**
- **Oil changing system for both engines and gensets**
- **Dual Racor filters with Y-Valves**
- **Fire extinguisher system with engine shutdown feature**
- **GULF Fuel polishing system**
- **SEA RECOVERY AQUAMATIC 1400 GPD w/ auto flush**

Accommodations & interior

- Sakura paneling and cabinetry
- Soft vinyl headliners
- Push-button handles for drawers & cupboards
- Round top corners, cabin entrance doors
- Cruisair® remote and self-contained air conditioner w/ ECU controls (Reverse Cycle capable for operating down to 40 degrees F)
- Industry leading Crestron® Adagio System w/ full functional programmability that delivers a complete, CrestNet solution for high-performance multi-room audio distribution and multi-function one-touch controls
- Seagull water purifier
- **Custom Mattresses NEW**
- Painted flooring prepared for carpet
- **Majilite Fabric for lower walkway walls and new Decor mirrors were installed NEW**
- S/S hardware
- Crestron® remote (2x) + wall mount
- Satin varnish for interior finish
- Hanging lockers with dual-locking mechanism
- Circular steps on upper deck
- Flip-up berth for storage in all staterooms
- RS232 dual communication w/ True High Definition with latest HDMI technology
- Upgraded Sound System w/ audio distribution in Salon, Aft deck and Pilothouse
- Maytag™ 2400AWW stacked washer/ dryer in hallway
- Hafele concealed hinges throughout interior cabinets w/ auto soft-closing function

Pilothouse

- **Sunken and extended dash with instrumentation NEW**
- Phantom screen with dedicated wood box for doors
- Water-tight doors to side deck
- Lighted handrail to staterooms
- 24V LED lights
- Windshield defrosters
- **2 x STIDD Chairs NEW**
- **In-dash chart storage NEW**
- **CUSTOM Helm Console NEW**

Salon

- Sony 40" LCD TV with Denon Professional Sound System with IR repeater
- Middle-Atlantic Media Rack for A/ V equipments
- DENON Amplifier
- 24V LED lights
- Phantom screen with dedicated wood box for door
- High-low table with burl-wood top
- **Custom End tables NEW**
- **Custom Settee with storage NEW**
- **Leather Chairs x 2 NEW**
- One Subwoofer
- **7 Zone SONOS Player NEW**
- **BLUE RAY HD Player NEW**

Master Stateroom

- Sony 40" LCD TV with Denon Professional Sound System with IR repeater
- Middle-Atlantic Media Rack for A/ V equipments
- DENON Amplifier
- 24V LED lights
- Phantom screen with dedicated wood box for door
- High-low table with burl-wood top
- **Custom End tables NEW**
- **Custom Settee with storage NEW**
- **Leather Chairs x 2 NEW**
- One Subwoofer
- **7 Zone SONOS Player NEW**
- **BLUE RAY HD Player NEW**

VIP Stateroom

- Queen-sized berth
- Two drawers under bed
- Sharp 20" LCD TV
- Cedar-lined hanging lockers with automatic lighting
- Dressing mirror
- **S/S oval port light with backlit Shoji Screens NEW**
- **Dimmable lights with 3 color selections NEW**
- **SONOS Audio NEW**
- **BLU-RAY Player**
- 24V LED lights

Port Guest Stateroom

- Side-by-side lower berths, fabric covered
- En-suite head with stall shower
- Sharp 20" LCD TV
- Cedar-lined hanging locker with automatic lighting
- Dressing mirror
- S/S oval port light with privacy screen
- 24V LED lights
- **BLU-RAY Player NEW**
- **SONOS Audio NEW**

Crew/Guest Quarters

- Captain's cabin
- Cedar-lined hanging locker with automatic lighting
- **Custom Storage Cabinets for spare parts (NEW)**
- Sharp 20" LCD TV with DVD/ CD audio stereo and video system
- Storage locker
- Storage under bunk
- Swivel Stool under vanity
- Head with stall shower
- Amtico in living space
- **Granite floor in head**
- **Dedicated cabinet houses the Octoplex, Maretron and Caterpillar displays NEW**

Heads

- Sakura walls & cabinets with granite or marble countertops

- 24V light
- China sink
- Grohe™ faucets for sink and shower
- Mirrored door on medicine cabinet
- Tecma™ toilet system
- Vent blower
- Seamless fiberglass stall shower w/ one-piece glass door
- S/S oval port light w/ screen
- GFI (110V only) AC outlet
- Granite in shower floor and shower seat
- Keuco™ bathroom fixtures
- Air extraction in each head shall be by low noise extraction fans, switched separately from lights.
- Fans to discharge air outside of the interior
- Mirrored sliding cabinet door under head port light
- **Granite floor for guest heads**

Galley

- **RAINFOREST marble countertops NEW**
- **Storage cabinets and drawers NEW**
- **Large Custom "Farmsink" NEW**
- **Disposal and Lazy Susan in corner NEW**
- **Overhang cabinet in galley with access doors NEW**
- Sakura cabinetry
- Overhead dish locker fwd.
- 36" JennAir™ Custom Panel French Door™ Refrigerator
- **30" SHARP Microwave NEW**
- **30" Induction Cooktop NEW**
- **30" Oven NEW**
- **CUSTOM DOWNDRAFT Ventilation System NEW**
- **"Drawer type" shelves in large galley cabinet NEW**
- **Granite countertop for foyer cabinet NEW**
- **Granite galley flooring**
- **GE garbage disposal**
- **FORMAL DINING TABLE - Seats 6**
- **Custom hold-downs for table and chairs**

Exclusions

All personal property is excluded unless specifically identified and included in the sale agreement and listing specifications. Personal property refers to all items not permanently

attached to the vessel including but not limited to: artwork, furnishings, and recreational or entertainment items. Advertisements, marketing materials, and/or other photography may depict the vessel with personal property, however, such personal property is excluded unless otherwise specifically included as provided herein.

Disclaimer

The Company offers the details of this vessel in good faith but cannot guarantee or warrant the accuracy of this information nor warrant the condition of the vessel. A buyer should instruct his agents, or his surveyors, to investigate such details as the buyer desires validated. This vessel is offered subject to prior sale, price change, or withdrawal without notice.

Exclusions

Owner's personal belongings.

Disclaimer

The Company offers the details of this vessel or yacht in good faith but cannot guarantee or warrant the accuracy of this information nor warrant the condition of the vessel. A buyer should instruct his representatives, agents, or his surveyors, to investigate such details as the buyer desires validated. This vessel or yacht is offered subject to prior sale, price change, or withdrawal without notice.

PHOTOS



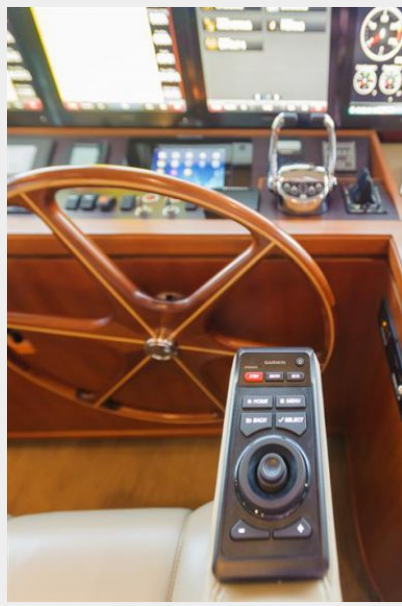


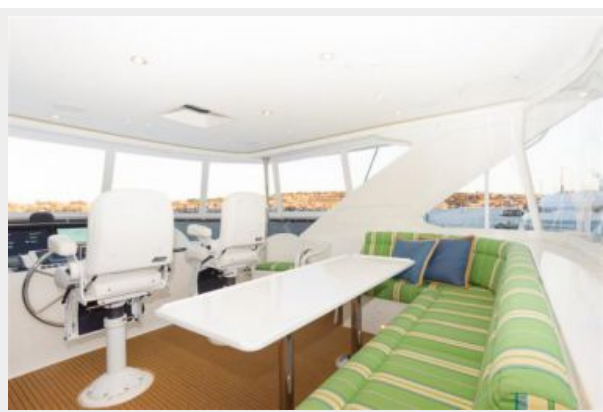


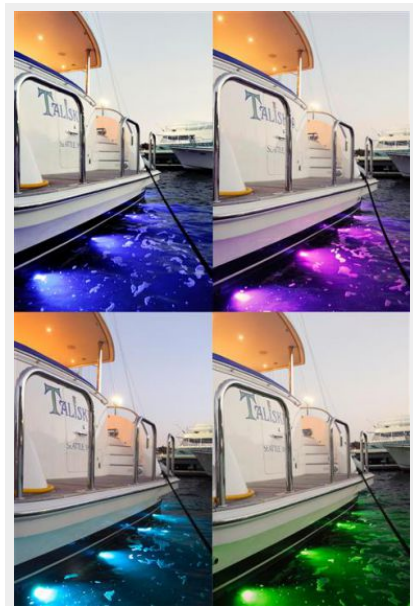
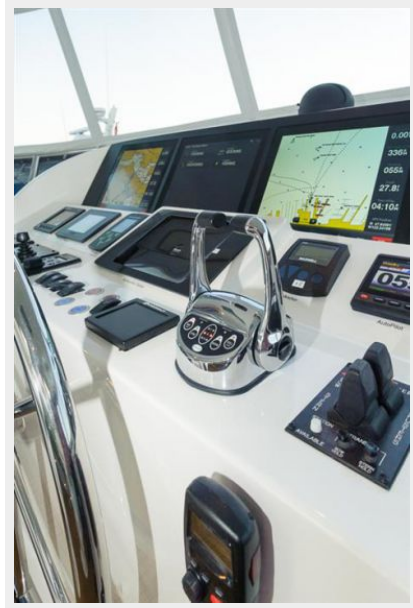














CONTACTS

Andrey Shestakov, leading yacht broker of the sales department of Shestakov Yacht Sales Inc. Shestakov Yacht Sales Inc., the official representative of the Miami/Fort Lauderdale FL headquarters.

Contact details

Email: andrey@shestakovyachtsales.com

Web: shestakovyachtsales.com/en/

Telephones

USA: +1(954)274-4435

Office hours

Monday – Saturday: **9:00 - 21:00** EDT

Sunday: **closed**

Address



Harbour Towne Marina, 850 NE 3rd St,
STE 213, Dania, FL 33004