

## LOLLIPOP III — ATLAS BOAT WORKS



**Builder:** ATLAS BOAT WORKS

**Year Built:** 2000

**Model:** Cruiser

**Price:** PRICE ON APPLICATION

**Location:** United States

**LOA:** 25' 0" (7.62m)

**Beam:** 8' 6" (2.59m)

**Max Draft:** 2' 6" (0.76m)

**Cruise Speed:** 17.37952484 Kts. (20 MPH)

**Max Speed:** 18.248501082 Kts. (21 MPH)

Our experienced yacht broker, Andrey Shestakov, will help you choose and buy a yacht that best suits your needs **LOLLIPOP III — ATLAS BOAT WORKS** from our catalogue. Presently, at Shestakov Yacht Sales Inc., we have a wide variety of yachts available on our sale's list. We also work in close contact with all the big yacht manufacturers from all over the world.

If you would like to buy a yacht **LOLLIPOP III — ATLAS BOAT WORKS** or would like help answering any questions concerning purchasing, selling or chartering a yacht, please call **+1(954)274-4435**

# TABLE OF CONTENTS

TABLE OF CONTENTS	2
SPECIFICATIONS	5
Basic Information	5
Dimensions	5
Speed, Capacities and Weight	5
Accommodations	5
Hull and Deck Information	6
Engine Information	6
DETAILED INFORMATION	7
OVERVIEW	7
OVERVIEW OF EQUIPMENT	7
ACCOMMODATIONS	8
GALLEY	8
HELM & NAVIGATION STATION	8
ELECTRICAL/MECHANICAL EQUIPMENT	8
STANDARD EQUIPMENT	9
Additional Equipment	10
Exclusions	10
Disclaimer	10
PHOTOS	11
"Lollipop III" on her lift	11
Starboard View	11
Bow Thruster	11
Stern View w/Platform & Swim Ladder	11
Rudder & Prop	12
2-Step Interior Ladder	12
Starboard Side Fender Storage	12
Portside Storage	12

Portside Battery and 3-Way Switch	13
Main Seacock & Storage	13
Starboard Side Battery Storage	13
Engine access	13
Yanmar 170hp Engine	14
Helm Station View Portside	14
Safety & Flare Storage Locker	14
Marine Supplies Storage Locker	14
Helm Station Guages	15
2440 Hrs. On Engine	15
5 Inch Compass	15
Helm Seat	15
Secondary Garmin GPS	16
Overhead Storage	16
Portside Chair	16
Single Burner Electric Burner	16
Sink Hot/Cold Pressure Water and Storage in Lavatory	17
Manual Head	17
Storage in Lavatory	17
Safety Gear Storage	17
Forward "V" With USCG Gear	18
Forward Forward "V" Overhead Hatch	18
12 Volt Fan and Cabin Light Forward	18
Acadia 25' Layout	18
<b>CONTACTS</b>	<b>19</b>
Contact details	19
Telephones	19
Office hours	19
Address	19



---

# SPECIFICATIONS

---

## Basic Information

---

**Category:** Cruiser

**Sub Category:** Downeast

**Model Year:** 2000

**Year Built:** 2000

**Country:** United States

**Vessel Top:** Hardtop

**Cockpit:** Yes

## Dimensions

---

**LOA:** 25' 0" (7.62m)

**LWL:** 23' 3" (7.09m)

**Beam:** 8' 6" (2.59m)

**Max Draft:** 2' 6" (0.76m)

**MFG Length:** 24' 10" (7.57m)

## Speed, Capacities and Weight

---

**Cruise Speed:** 17.37952484 Kts. (20 MPH) **Max Speed:** 18.248501082 Kts. (21 MPH)

**Water Capacity:** 20 Gallons

**Holding Tank:** 20 Gallons

**Fuel Capacity:** 60 Gallons

## Accommodations

---

**Total Cabins:** 1

**Total Berths:** 1

**Total Heads:** 1

---

## Hull and Deck Information

---

**Hull Material:** Fiberglass

**Deck Material:** Fiberglass

**Hull Color:** GREEN

---

## Engine Information

---

**Engines:** 1

**Manufacturer:** Yanmar

**Model:** 4LH-DTE

**Engine Type:** Inboard

**Fuel Type:** Diesel

---

# DETAILED INFORMATION

---

## OVERVIEW

---

Lollipop III has been owned by the current Captain since 2003. He bought her with 70hrs. He joined the US Coast Guard Auxiliary and has meticulous records of the engine over the past 11 years. Priced below value due to the need for a hull paint job and some TLC in the Helm and Cabin area.

The 170HP Yanmar engine pushes "Lollipop" at 20 knts at top speed and when cruising at 16Knts or less only two gallons of fuel per hour will be consumed.

The Acadia 25 is a traditional lobster boat design that has been refined into a modern pleasure boat with all the best qualities of the old and new. She has a large aft cockpit, protected pilothouse and a comfortable cabin with standing headroom. This vessel will meet the demands of the weekender and extended cruiser.

## OVERVIEW OF EQUIPMENT

---

### Electronics

- Depthsounder
- Navigation Center
- Radio
- Compass
- GPS
- VHF

### Inside Equipment

- Bow Thruster
- Electric Bilge Pump
- Marine Head
- Hot Water
- Battery Charger

### Electrical Equipment

- Shore Power Inlet

### Outside Equipment/Extras

- Swimming Ladder

---

## ACCOMMODATIONS

---

- Beige Interior Color
- Manual Head
- Wand Shower
- Sleep two in "V" berth
- 6' Headroom
- 12 Volt courtesy and overhead Lighting
- 110-Volt Outlet

---

## GALLEY

---

- SS Single basin sink with Hot/Cold Pressurized water
- Cabinets & Utensil Storage
- Single Burner Propane Stove
- Jabsco Manual Flush Head w/Waste Holding Tank & Deck Pumpout
- SS Sink
- Vanity Mirror & Towel Hooks
- Teak Accent Trim
- 12-Volt Lighting

---

## HELM & NAVIGATION STATION

---

- Adjustable pedestal seat with armrests both starboard & port
- Excellent visibility
- Full Bridge Deck enclosure
- Forward Center Vent Window and both Port & Starboard side vent windows open
- Destroyer-Style Stainless Steel Wheel
- Single Lever Shift & Throttle Controls
- Garmin 2010 Color GPS
- Engine Hobbs Meter w/2440 hrs.
- Standard Horizon Digital Depth Finder
- Standard Horizon Quest VHF Radio
- Secondary Hand Held West Marine VHF Radio
- Hardtop-Mounted Manually Controlled Spotlight
- 5" Richie compass

---

## ELECTRICAL/MECHANICAL EQUIPMENT

---

### Electrical Details

- 12-Volt DC- 2 Marine Deep Cycle Batteries w/3 way Switch



- 110-Volt AC-50' Shore Power Cord 30amp Service
- High Output Engine Driven Alternator
- 110 Volt Ground Fault Protected Outlets
- AC/DC master power distribution panel with labeled circuit breakers
- Reverse Polarity indicator lights
- 12Volt accessory Recptacle

### Mechanical Equipment

- 12 Volt Shurflow Pressure Water System
- Roller Chock & Anchor Locker
- 6 Gallon 110-Volt quick recovery water heater w/Engine heat Exchanger
- Electric Horn
- Navigation/Anchor Lighting
- (2) Automatic/Manual Bilge Pumps
- Owners Manuals & Documentation

## STANDARD EQUIPMENT

---

- 170hp Yanmar diesel
- Engine panel with tach, water temp, oil press., hour meter
- Automatic bilge pump
- Galley with SS sink, 1 burner stove, storage cabinet
- Cabin and deck lights
- Opening hatch over vee-berth
- Opening center windshield
- Enclosed head compartment with vanity sink, marine head and holding tank, and shower
- 6 gallon water heater
- 4 blade bronze propeller
- Molded-in anchor hatch forward with 13 lb anchor and line
- Vee-berth cushions
- Auxiliary fuel filter
- Swim platform with ladder
- 60 gallon fuel capacity
- 20 gallon fresh water tank
- 20 gallon holding tank
- Pressure water system
- Navigation and anchor lights
- Anchor - 13 lb Danforth type
- Power Windlass-Operated from the helm station
- Bow Thruster w/joy stick
- Four opening portlights
- Six hand rails
- SS bow rail

- Lighted compass
- Two helm seats
- One windshield wipers
- Automatic shower pump
- Dual lever shift and throttle
- Two 12 volt batteries and switch (Starting & House)
- One 12 Volt Marine Battery (Powers the Windlass)
- All fiberglass construction
- HYDREX vinylester resin skin
- LASDROP dripless packing box

## Additional Equipment

---

- 12 USCG Approved Life Vests
- Current Flares & Safety Equipment
- Extra Fenders & Lines
- Two Extendable Docking Poles
- Aft Deck has Stainless Steel Supported Canvas for Comfort and protection

## Exclusions

---

Owner's personal belongings.

## Disclaimer

---

The Company offers the details of this vessel or yacht in good faith but cannot guarantee or warrant the accuracy of this information nor warrant the condition of the vessel. A buyer should instruct his representatives, agents, or his surveyors, to investigate such details as the buyer desires validated. This vessel or yacht is offered subject to prior sale, price change, or withdrawal without notice.

# PHOTOS

**"Lollipop III" on her lift**



**Starboard View**



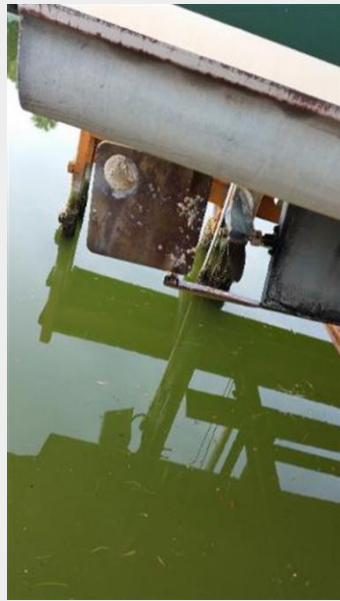
**Bow Thruster**



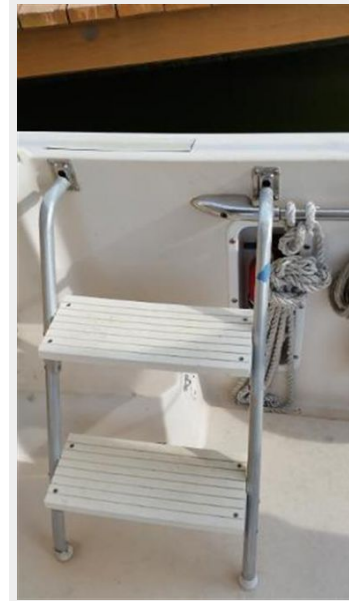
**Stern View w/Platform & Swim Ladder**



**Rudder & Prop**



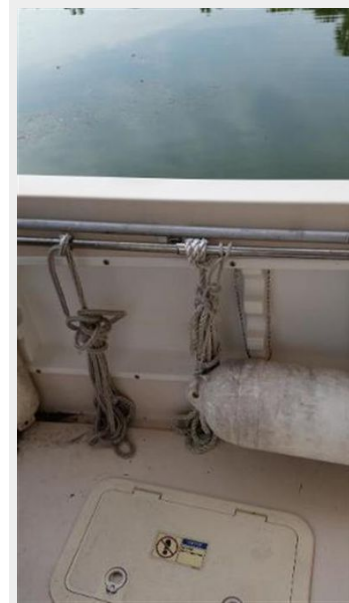
**2-Step Interior Ladder**



**Starboard Side Fender Storage**



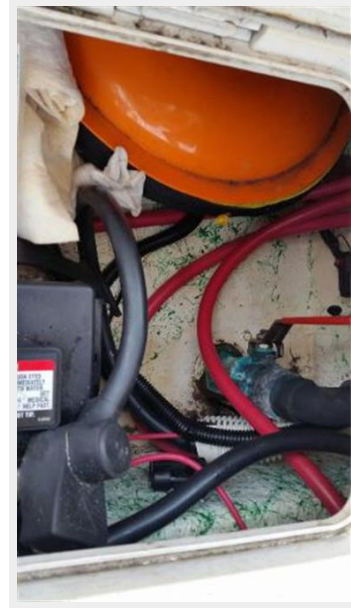
**Portside Storage**



### Portside Battery and 3-Way Switch



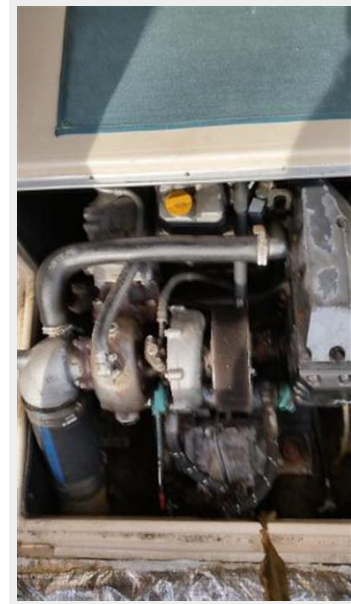
### Main Seacock & Storage



### Starboard Side Battery Storage



### Engine access



**Yanmar 170hp Engine**



**Helm Station View Portside**



**Safety & Flare Storage Locker**



**Marine Supplies Storage Locker**



**Helm Station Guages**



**2440 Hrs. On Engine**



**5 Inch Compass**



**Helm Seat**



### Secondary Garmin GPS



### Overhead Storage



### Portside Chair



### Single Burner Electric Burner

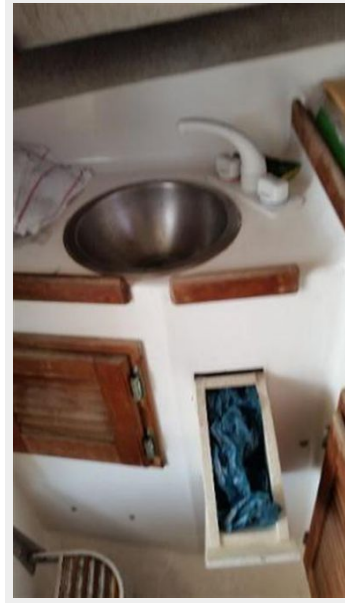




**Manual Head**



**Sink Hot/Cold Pressure Water and Storage in Lavatory**



**Storage in Lavatory**



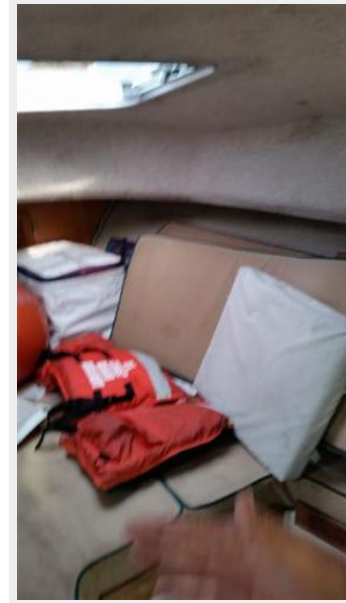
**Safety Gear Storage**



**Forward "V" With USCG Gear**



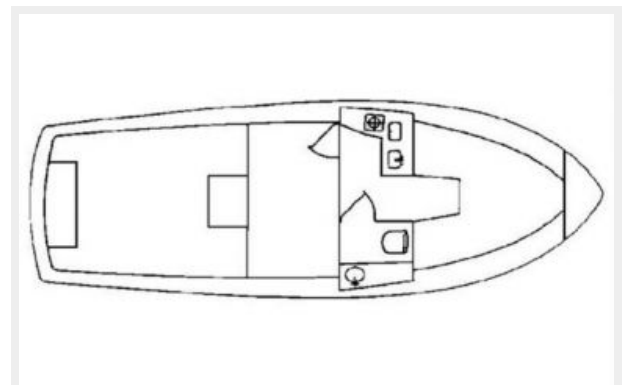
**Forward Forward "V" Overhead Hatch**



**12 Volt Fan and Cabin Light Forward**



**Acadia 25' Layout**



# CONTACTS

---

Andrey Shestakov, leading yacht broker of the sales department of Shestakov Yacht Sales Inc. Shestakov Yacht Sales Inc., the official representative of the Miami/Fort Lauderdale FL headquarters.

## Contact details

---

Email: [andrey@shestakovyachtsales.com](mailto:andrey@shestakovyachtsales.com)

Web: [shestakovyachtsales.com/en/](http://shestakovyachtsales.com/en/)

## Telephones

---

USA: +1(954)274-4435

## Office hours

---

Monday – Saturday: **9:00 - 21:00** EDT

Sunday: **closed**

## Address

---



Harbour Towne Marina, 850 NE 3rd St,  
STE 213, Dania, FL 33004