

ALEXANDRA — HATTERAS



Builder: HATTERAS

Year Built: 1991

Model: Motor Yacht

Price: PRICE ON APPLICATION

Location: United States

LOA: 70' 0" (21.34m)

Beam: 18' 2" (5.54m)

Max Draft: 5' 6" (1.68m)

Our experienced yacht broker, Andrey Shestakov, will help you choose and buy a yacht that best suits your needs **ALEXANDRA — HATTERAS** from our catalogue. Presently, at Shestakov Yacht Sales Inc., we have a wide variety of yachts available on our sale's list. We also work in close contact with all the big yacht manufacturers from all over the world.

If you would like to buy a yacht **ALEXANDRA — HATTERAS** or would like help answering any questions concerning purchasing, selling or chartering a yacht, please call **+1(954)274-4435**

TABLE OF CONTENTS

TABLE OF CONTENTS	2
SPECIFICATIONS	4
Overview	4
Basic Information	4
Dimensions	4
Speed, Capacities and Weight	4
Accommodations	4
Hull and Deck Information	4
Engine Information	5
DETAILED INFORMATION	6
Vessel Walkthrough	6
Main Salon	6
Galley	6
Master Stateroom	6
VIP Stateroom	7
Forward Stateroom	7
Flybridge	7
Flybridge Electronics	7
Pilothouse	7
Deck	7
Cockpit	8
Electrical	8
Engine Room	8
Crew Quarters	8
Broker Comments	8
Exclusions	8
Disclaimer	8
PHOTOS	10

Cockpit	10
Mezzanine	10
Salon Forward	10
Dining Area	10
Galley	10
Dinette	10
Master Stateroom	11
Master Wardrobe	11
Master Head	11
Flybridge Forward	11
Flybridge Helm	11
Helm	11
Flybridge Aft	12
Engine Room	12
Crew	12
CONTACTS	13
Contact details	13
Telephones	13
Office hours	13
Address	13

SPECIFICATIONS

Overview

This yacht was built to entertain in style and comfort!

Basic Information

Category: Motor Yacht

Sub Category: Cockpit

Model Year: 1991

Year Built: 1991

Country: United States

Fly Bridge: Yes

Cockpit: Yes

Dimensions

LOA: 70' 0" (21.34m)

Beam: 18' 2" (5.54m)

Max Draft: 5' 6" (1.68m)

Speed, Capacities and Weight

Displacement: 103000 Pounds

Water Capacity: 345 Gallons

Fuel Capacity: 1596 Gallons

Accommodations

Total Cabins: 4

Total Heads: 4

Hull and Deck Information

Hull Material: Fiberglass

Engine Information

Engines: 2

Manufacturer: Detroit Diesel

Model: 12V92 TA

Engine Type: Inboard

Fuel Type: Diesel

DETAILED INFORMATION

Vessel Walkthrough

VIP layout and interior configuration features: Galley-up with eat-in dinette, easily accessible to the wheelhouse or dining table or dining table in the Salon. Large salon with dining table - ceiling height 8' (4) Staterooms with private bath - 3 forward/Master aft Large walk-in engine room with full standing headroom

Main Salon

The main salon is open, bright and airy, it welcomes you in to relax and enjoy the good life. An L-shaped sofa to port and two arm chairs to starboard providing plenty of comfortable seating for family and guests. Forward dining area in the main salon seats 4-5. Forward of the dining area is a large built-in flat screen TV with entertainment system. Perfect way to relax and enjoy your favorite sounds or a late night movie after a great day of cruising. Both bar and entertainment areas offer privacy doors when not in use. Yamaha RX-450, KX-W332 receivers Sea Tel antenna control Digital satellite receiver SAT Cruisair air conditioning/heat, reverse cycle Nutone central vacuum - located in equipment room/outlets throughout Carpeted salon Rope accent lighting and overhead lighting Custom wine and glass storage Custom round dining table L-shaped sofa Coffee table Entertainment center - Sharp TV (2) Leather occasional chairs

Galley

A dine-in galley with a view! This is a galley not only to enjoy cooking n but to enjoy dining in for breakfast and light lunch. This galley offers a large bright space with tons of storage and loads of surface prep area for the seasoned chef. With full size appliances and sink with prep area and Insinkerator disposal. Maytag stainless steel refrigerator/freezer, double door, full size Magic Chef 4-burner stove Magic Chef large oven Sharp Convection/carousel microwave Whirlpool dishwasher Whirlpool Trash compactor Insinkerator, Crosley C-104 garbage disposal

Master Stateroom

The master stateroom is down and aft of the salon via its own private staircase. The master stateroom features a king-size bed on centerline with his & hers adjoining heads just aft which are separated by a large Roman Jacuzzi tub/shower. Additional features of this room are a huge cedar-lined walk-in closet, built-in chests of drawers along both the port and starboard sides and a desk with a lamp built-in forward in the stateroom to starboard. Full beam master stateroom Centerline king bed Walk-in cedar lined closet Built-in vanity Excellent storage Overhead lighting Air conditioning controls (2) port and (2) starboard port lights Custom blinds and window treatments Full length mirror Ensuite head with large shower and Jacuzzi tub

VIP Stateroom

Queen berth (2) Hanging lockers Flat screen TV Ensuite head with Jacuzzi tub/shower

Forward Stateroom

Queen berth Adjoining head with full shower Flat screen TV Full hanging locker

Flybridge

The flybridge is easily accessed via stairs from the pilothouse, is the perfect place to relax and entertain in style while cruising on a warm sunny day. Instruments are laid out to optimize space and offer maximum comfort while underway. The flybridge has been equipped with sectional seating, refrigerator, sink, and storage. Custom hinges Courtesy lights MarQuipt low profile davit, 1500# Tender chocks Bimini top Helm and companionway chairs Air horns Radar arch and hinge Refrigerator/freezer

Flybridge Electronics

Sea 156 VHF with remote microphone Datamarine depth 3030 ACR spot light remote Robertson AP 200 DC autopilot Naiad controls Hailer Sony CD player with four speakers

Pilothouse

The pilothouse is perfectly situated providing great visibility. Easy access is through sliding doors, to port and starboard (great for fueling and docking!) with quick access up to the flybridge via a stairway and down to the forward cabins. For comfort and utility, a raised bench helm seat contains slide-out chart storage and cabinet storage. Navigation is duplicated at the flybridge. SEA 156 VHF with remote microphone Furuno 72-mile radar Robertson AP200DL autopilot Datamarine Navigator speed/depth sounder Ritchie Powerdamp compass Custom AC distribution panel and switch Naiad stabilizers controller Electric engine controls Synchronizers ACR spot light Electronic controls Naiad stabilizers

Deck

The forward decks are accessed from the pilothouse through the port and starboard side doors. The well laid out foredeck includes a built-in bench seat for comfort while cruising as well as a large sun lounge area. Everything is provided for safe and comfortable cruising. Galley Maid anchor windlass (2) Danforth anchors Bow pulpit Flares Life ring Lines Fenders 8-Man life raft in canister Large sun pad on bow with cushions Bow bench seating Fresh water wash down system Cockpit with transom door and swim platform Custom storage cabinets Rod holders

Cockpit

Transom door and gate 8-Man life raft in canister Bait preparation center Fresh water shower (4)
Rod holders

Electrical

The generator room is located forward on the lower level. (2) Glendinning 50-amp Cable Master shore power cords Onan 20 kW generator with sound shield 12V Battery charger (Flybridge) 24V Battery charger (Engine room) Hot water heater Panasonic phone system throughout vessel - new upgrade! Cellular phone connected to the Panasonic phone system On-board perimeter security system

Engine Room

The engine room can be accessed directly from the passageway outside of the master stateroom. This 70 footer has a spacious full beam engine room. Excellent access to all machinery making it very easy to service all equipment. Generators are housed in their own room and access is via the guest cabin sole. Twin Detroit Diesel 12V 92TA DDEC's, 1040 hp each Naiad 54 stabilizers Dual Racor filters Oil change system Sea strainers Engine room fans Fuel transfer pump Air compressor Engine synchronizers Trim tab system Engine alarm and emergency engine stop Charles charging system: battery charging system Mechanical gauges Fire extinguishing system (2) Hot water heaters (2) Recirculating fans Hydraulic stabilizers

Crew Quarters

Over/under bunks with ensuite head and full shower

Broker Comments

A popular 4 stateroom motoryacht. Wide open spaces, large comfortable salon, and a full cockpit.

Exclusions

Owner's personal belongings.

Disclaimer

The Company offers the details of this vessel or yacht in good faith but cannot guarantee or

warrant the accuracy of this information nor warrant the condition of the vessel. A buyer should instruct his representatives, agents, or his surveyors, to investigate such details as the buyer desires validated. This vessel or yacht is offered subject to prior sale, price change, or withdrawal without notice.

PHOTOS

Cockpit



Mezzanine



Salon Forward



Dining Area



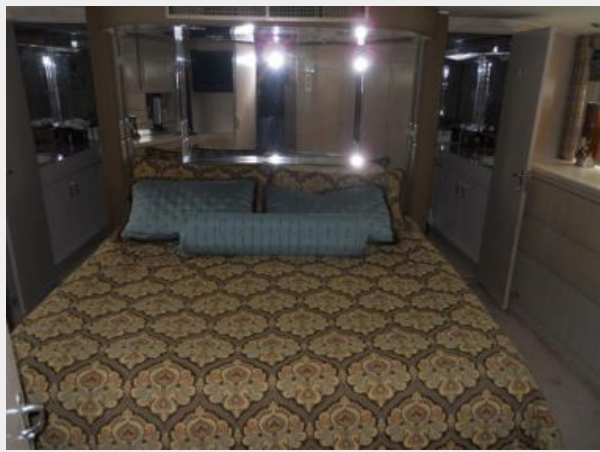
Galley



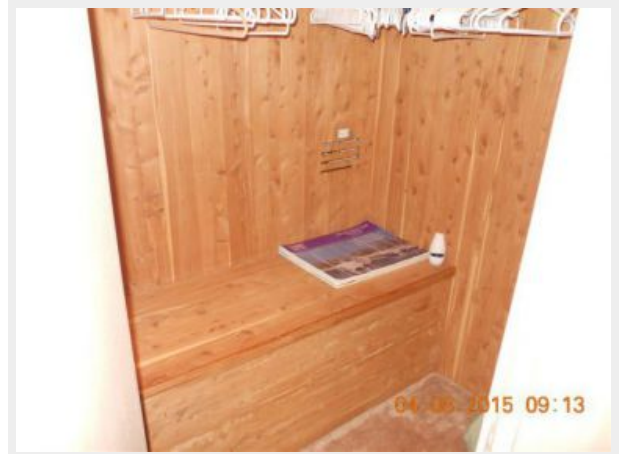
Dinette



Master Stateroom



Master Wardrobe



Master Head



Flybridge Forward



Flybridge Helm



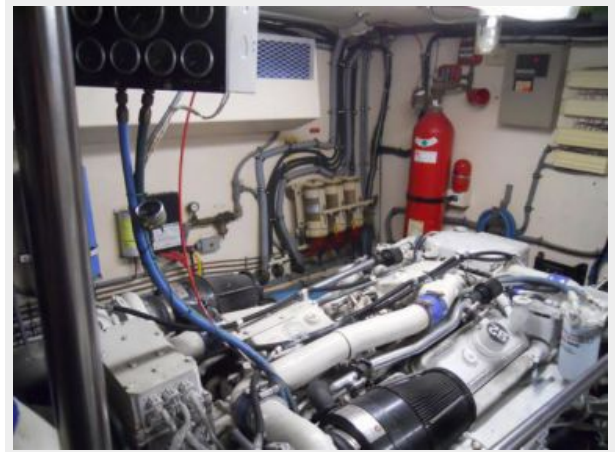
Helm



Flybridge Aft



Engine Room



Crew



CONTACTS

Andrey Shestakov, leading yacht broker of the sales department of Shestakov Yacht Sales Inc. Shestakov Yacht Sales Inc., the official representative of the Miami/Fort Lauderdale FL headquarters.

Contact details

Email: andrey@shestakovyachtsales.com

Web: shestakovyachtsales.com/en/

Telephones

USA: +1(954)274-4435

Office hours

Monday – Saturday: **9:00 - 21:00** EDT

Sunday: **closed**

Address



Harbour Towne Marina, 850 NE 3rd St,
STE 213, Dania, FL 33004