

TAMARA K — HATTERAS



Builder: HATTERAS

Year Built: 1992

Model: Sport Fisherman

Price: PRICE ON APPLICATION

Location: United States

LOA: 82' 0" (24.99m)

Beam: 21' 5" (6.53m)

Min Draft: 6' 6" (1.98m)

Cruise Speed: 20 Kts. (23 MPH)

Max Speed: 24 Kts. (28 MPH)

Our experienced yacht broker, Andrey Shestakov, will help you choose and buy a yacht that best suits your needs **Tamara K — HATTERAS** from our catalogue. Presently, at Shestakov Yacht Sales Inc., we have a wide variety of yachts available on our sale's list. We also work in close contact with all the big yacht manufacturers from all over the world.

If you would like to buy a yacht **Tamara K — HATTERAS** or would like help answering any questions concerning purchasing, selling or chartering a yacht, please call **+1(954)274-4435**

TABLE OF CONTENTS

TABLE OF CONTENTS	2
SPECIFICATIONS	5
Basic Information	5
Dimensions	5
Speed, Capacities and Weight	5
Accommodations	5
Hull and Deck Information	5
Engine Information	6
DETAILED INFORMATION	7
Vessel Description	7
Exclusions	8
Disclaimer	8
PHOTOS	9
Profile	9
Profile	9
Fore Profile	9
Transom	9
Cockit	10
Fore Deck and Davit	10
Bow	10
Cockit	10
Side Walkaround Deck	10
Frameless Windows	10
Fore Deck	11
Fore Deck	11
Bridge	11
Navigation Station	11
Navigation Station	12

Radar	12
Cockpit Refrigerator	12
Cockpit Storage	12
Bow	13
Pilothouse	13
Helm	13
Helm	13
Salon	13
Salon	13
Salon	14
Salon	14
Salon Television	14
Salon	14
Dinette	14
Galley and Dinette	14
Galley	15
Master Stateroom	15
Master Stateroom	15
Head	15
Forward Stateroom	15
Forward Stateroom	15
Starboard Twin Bunk Stateroom	16
Port Twin Bunk Stateroom 2	16
Head	16
Crew Quarters	16
Washer/Dryer	16
Crew Quarters	16
Crew Quarters	17
Crew Head	17

Engine Room	17
Engine Room	17
Engine Room	17
Engine Room	17
Engine Room	18
Engine Room	18
Engine Room	18
Engine Room	18
Engine Room	19
CONTACTS	20
Contact details	20
Telephones	20
Office hours	20
Address	20

SPECIFICATIONS

Basic Information

Category: Sport Fisherman

Sub Category: Convertible

Model Year: 1993

Year Built: 1992

Country: United States

Vessel Top: Enclosed

Dimensions

LOA: 82' 0" (24.99m)

Beam: 21' 5" (6.53m)

Min Draft: 6' 6" (1.98m)

Speed, Capacities and Weight

Cruise Speed: 20 Kts. (23 MPH)

Max Speed: 24 Kts. (28 MPH)

Water Capacity: 840 Gallons

Holding Tank: 350 Gallons

Fuel Capacity: 4210 Gallons

Accommodations

Total Cabins: 4

Sleeps: 10

Total Heads: 4

Crew Cabin: 1

Crew Berths: 2

Crew Sleeps: 2

Hull and Deck Information

Hull Material: Fiberglass

Hull Configuration: Modified V-Hull

Engine Information

Manufacturer: Detroit Diesel

Model: 16V92TA

Engine Type: Inboard

Fuel Type: Diesel

DETAILED INFORMATION

Vessel Description

Accommodations: Sleeps 8 owners and guests in 4 staterooms with ensuite heads. Crew quarters for 2. **Salon:** Samsung 40" TV (New 2014) Pioneer Stereo **Galley:** Galley up GE Refrigerator/Freezer KitchenAid dishwasher KitchenAid trash compactor KitchenAid 4 burner range and oven Maytag microwave/convection oven NEW Garbage disposal Double undermount stainless sink. **Master Stateroom:** Full beam master stateroom Kingsize bed Office space to port Ensuite Head VIP Stateroom: Centerline queen bed Ensuite head Overhead escape hatch Drawer Storage Hanging locker storage with cedar paneling JVC TV Panasonic DVD/VHS receiver **Starboard Twin Stateroom:** Sylvania TV Panasonic DVD/VHS receiver Twin beds Ensuite head & shower Drawer storage Hanging locker storage with aromatic cedar paneling Overhead hatch **Port Twin Stateroom:** Sylvania TV Panasonic DVD/VHS receiver Twin beds Ensuite head & shower Drawer storage Hanging locker storage with aromatic cedar paneling Overhead hatch **Electronics:** HELM: (1) Nav Net VX 1 (1) Garmin 4208 Touch Screen GPS (1) Garmin 740 GPS Map (2) Navnet VX2 10.4" Chartplotters (2) RD 30 Furuno (2) ICOM VHF Radios (2) ACR spotlights Furuno Hailer SSB Vetus Bowthrustrer Controller Heart Systems Tank Tender Robertson AP 300 DX Visio TV MAIN STATION: (2) Furuno Navnet radars (2) Furuno RD30 Twin Furuno Rasterscan radar Robertson AP300X Autopilot w/remote at helm Northstar 941X GPS receiver Furuno FCV1000 color sounder (2) ICOM VHF radio AFT STATION: Navnet 10'4" Chart Plotter Robertson AP 300 DX Dart Temperature Gauge Engine Displays **Electrical:** (2) 50 Northern Lights generators (2) 75amp Dytec chargers (2) Shoreline isolation transformers (2) 100amp shore cords both on Glendinning retractors **Deck:** Bow pulpit with Maxwell 3500 windlass Marquipt 2500# full remote low profile davit **Additional Equipment:** NAIAD stabilizers American hydraulic bow thruster Oil change system with 220 gal storage tank & dockside discharge hose with remote Electric fuel prime Fuel transfer system Dual Racor filters on mains, single Racor filters on generators and triple Racor filters on fuel transfer system (2) 1000 GPD Watermaker Inc. (2) Offshore liferafts vacuum packed for 3 year cycle, due 2015 Current owners have maintained her with an open checkbook to her original condition. The original windows have been removed and frameless windows installed on all exposed areas of the vessel (aft deck excluded). The port engine was overhauled approximately 1,450 hrs ago and the starboard 25 hrs ago 50 kw Northern Lights with oil changes at 200 hrs, approximately 11,000 hours total. Captain reports oil still looks clean at 200 hour oil changes. (2) Hot water heaters (2) Air compressors (2) Fresh water pumps (2) Hydraulic PTO steering pumps Eskimo Ice maker 1.5 years ago A/C changed out 2010/2011 A/C handlers changed 2010/1011 **ADDITIONAL INFORMATION:** Twin liferafts vacuum packed for three year cycle due this year, 2015 Bar Ice maker Fire extinguisher recertified 2/15 Rudders dropped new bearings, 2013 Props reconditioned by Coastal Prop, 2014 All exposed windows made frameless Rebuilt Delta air intake 2013 Watermakers rebuilt 2012 **BROKERS COMMENTS** The 82' Hatteras ushered in the era of large convertible sportfisherman. Tamara K shows as new and original with her fresh bright white paint job (Rolly Marine, December 2014). Tamara K was built as Jere Lyn for the booth family with redundant systems to travel the pacific. The Tamara K was custom ordered with

oversized 50 Kw Northern Lights generators. Her redundant systems include twin Watermakers Inc. Watermakers, twin hot water heaters, twin power steering pumps, twin fresh water pumps, twin AC cooling pumps and twin air compressors. The Tamara K has been maintained with an open checkbook to keep her in original condition. Her original exposed framed windows were removed and frameless windows installed. The starboard engine and transmission were overhauled in 2014 and have approximately 25 hours SMOH. The port engine has approximately 1,450 hours SMOH. A system of continual maintenance including new AC compressors and air handlers in 2010/2011 keep Tamara K in ready to go condition. With only 2 loving owners in her lifetime, Tamara K shows the love and presents as a much newer boat. Tamara K is priced to sell by a market aware seller.

Exclusions

Owner's personal belongings.

Disclaimer

The Company offers the details of this vessel or yacht in good faith but cannot guarantee or warrant the accuracy of this information nor warrant the condition of the vessel. A buyer should instruct his representatives, agents, or his surveyors, to investigate such details as the buyer desires validated. This vessel or yacht is offered subject to prior sale, price change, or withdrawal without notice.

PHOTOS

Profile



Profile



Fore Profile



Transom



Cockit



Fore Deck and Davit



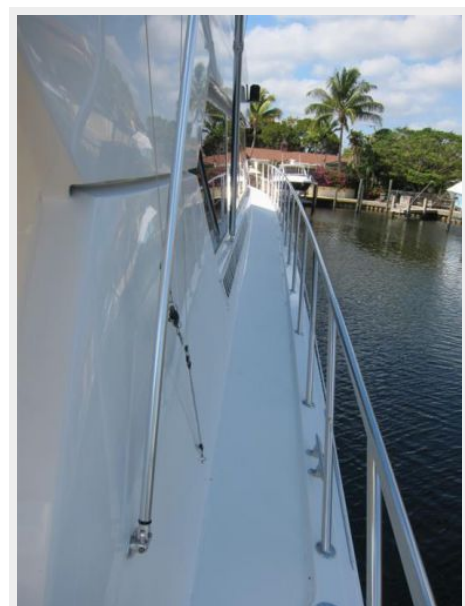
Bow



Cockit



Side Walkaround Deck



Frameless Windows



Fore Deck



Fore Deck



Bridge



Navigation Station



Navigation Station



Radar



Cockpit Refrigerator



Cockpit Storage



Bow



Pilothouse



Helm



Helm



Salon



Salon



Salon



Salon



Salon Television



Salon



Dinette



Galley and Dinette



Galley



Master Stateroom



Master Stateroom



Head



Forward Stateroom



Forward Stateroom



Starboard Twin Bunk Stateroom



Port Twin Bunk Stateroom 2



Head



Crew Quarters



Washer/Dryer



Crew Quarters



Crew Quarters



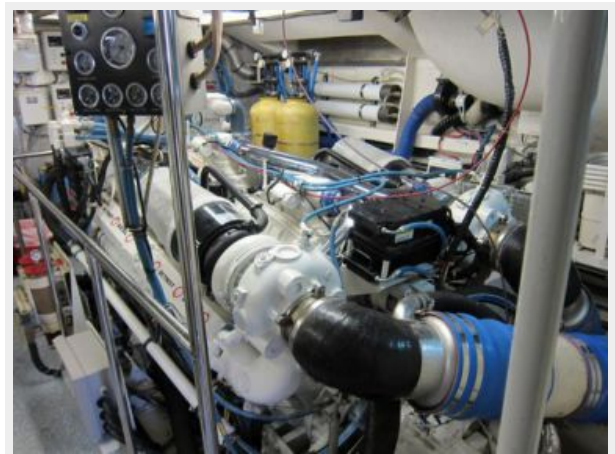
Crew Head



Engine Room



Engine Room



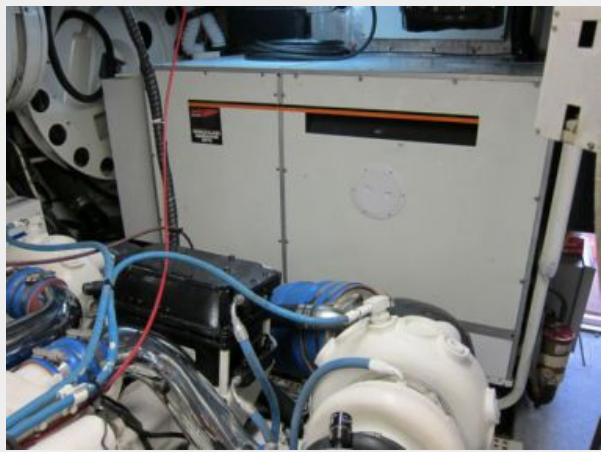
Engine Room



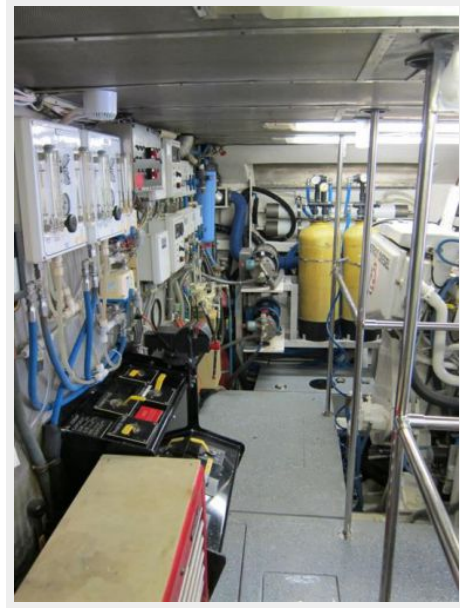
Engine Room



Engine Room



Engine Room



Engine Room



Engine Room



Engine Room



CONTACTS

Andrey Shestakov, leading yacht broker of the sales department of Shestakov Yacht Sales Inc. Shestakov Yacht Sales Inc., the official representative of the Miami/Fort Lauderdale FL headquarters.

Contact details

Email: andrey@shestakovyachtsales.com

Web: shestakovyachtsales.com/en/

Telephones

USA: +1(954)274-4435

Office hours

Monday – Saturday: **9:00 - 21:00** EDT

Sunday: **closed**

Address



Harbour Towne Marina, 850 NE 3rd St,
STE 213, Dania, FL 33004