

## CALLAHAN — SILVERTON



**Builder:** SILVERTON

**Year Built:** 2003

**Model:** Motor Yacht

**Price:** PRICE ON APPLICATION

**Location:** United States

**LOA:** 35' 0" (10.67m)

**Beam:** 13' 0" (3.96m)

**Min Draft:** 3' 2" (0.97m)

Our experienced yacht broker, Andrey Shestakov, will help you choose and buy a yacht that best suits your needs **CALLAHAN — SILVERTON** from our catalogue. Presently, at Shestakov Yacht Sales Inc., we have a wide variety of yachts available on our sale's list. We also work in close contact with all the big yacht manufacturers from all over the world.

If you would like to buy a yacht **CALLAHAN — SILVERTON** or would like help answering any questions concerning purchasing, selling or chartering a yacht, please call **+1(954)274-4435**

# TABLE OF CONTENTS

TABLE OF CONTENTS	2
SPECIFICATIONS	4
Overview	4
Basic Information	4
Dimensions	4
Speed, Capacities and Weight	4
Accommodations	4
Hull and Deck Information	5
Engine Information	5
DETAILED INFORMATION	6
Accommodations	6
Master Stateroom, Forward	6
Salon	6
Head	6
Galley, Main Deck, Forward Starboard	7
Helm / Electronics and Navigation	7
Deck	7
Engine and Mechanical Equipment	7
Electrical System / Equipment	8
Exclusions	8
Salesman's Comments	8
Exclusions	8
Disclaimer	8
PHOTOS	9
Master Stateroom 1	9
Master Stateroom 2	9
Salon 1 - Sofa	9
Salon 2 - Dinette	9

---

Head 1	10
Salon 3	10
Head 2	10
Galley 1	10
Galley 2	11
Helm / Electronics & Navigation 1	11
Helm / Electronics & Navigation 2	11
Deck 1 - Bow	11
Deck 2 - Helm Seating	11
Engine & Mechanical Equipment	11
<b>CONTACTS</b>	<b>12</b>
Contact details	12
Telephones	12
Office hours	12
Address	12

---

# SPECIFICATIONS

---

## Overview

---

"Callahan" is a well designed family cruiser. Her wide beam allows for a very large Main Cabin. She features the upgraded Crusader fresh water cooled 8.1 MPI's. **PLEASE CALL FOR DETAILS!!!**

## Basic Information

---

**Category:** Motor Yacht

**Sub Category:** Convertible

**Model Year:** 2003

**Year Built:** 2003

**Country:** United States

**Vessel Top:** Bimini Top

## Dimensions

---

**LOA:** 35' 0" (10.67m)

**Beam:** 13' 0" (3.96m)

**Min Draft:** 3' 2" (0.97m)

## Speed, Capacities and Weight

---

**Displacement:** 16094 Pounds

**Water Capacity:** 94 Gallons

**Fuel Capacity:** 300 Gallons

## Accommodations

---

**Total Cabins:** 1

**Total Berths:** 4

**Sleeps:** 4

**Total Heads:** 1

---

## Hull and Deck Information

---

**Hull Material:** Fiberglass

**Deck Material:** Fiberglass

**Hull Configuration:** Modified V-Hull

---

## Engine Information

---

**Engines:** 2

**Manufacturer:** Crusader

**Model:** 8.1 MPI

**Engine Type:** Inboard

**Fuel Type:** Gas

---

# DETAILED INFORMATION

---

## Accommodations

---

Sleeps two owners and guests in one Stateroom plus dinette sleeps one, plus settee sleeps one for a total of four berths. One Head with shower. Enter the Main Cabin from the Cockpit to find a very roomy Salon! Dinette with entertainment system to port. A large sofa is to starboard. The roomy Galley is starboard forward and the Head is to port forward. A large Master Stateroom is forward.

## Master Stateroom, Forward

---

- TV
- Carpeting
- Queen berth
- Air conditioning / heater
- Stereo system w/ speakers

## Salon

---

- TV
- Sofa
- Storage
- Cabinets
- Carpeting
- Mini blinds
- Cable TV hookups
- Dinette w/ Cherry table
- Air conditioning / heater with controls
- Stereo system w/ CD player, speakers

## Head

---

- Sink
- Shower
- Exhaust fan
- Medicine cabinet
- Overboard, recirculating, holding tank, electric head

---

## Galley, Main Deck, Forward Starboard

---

- Sink
- Water heater
- Refrigerator w/ freezer
- Two-burner, electric stove
- Pressure fresh water system
- Microwave oven / Convection oven

---

## Helm / Electronics and Navigation

---

- Transducer
- 3" Compass
- Garmin 545S GPS
- Furuno 24nm radar
- Interphase fish finder
- Northstar 951 GPS / Plotter
- Standard Horizon VHF radio
- Standard Horizon speed & distance logs
- Stereo system with AM / FM radio, CD player

---

## Deck

---

- Bow pulpit
- Transom door
- Swim platform
- Boarding ladder
- Navigation lights
- Flybridge curtain
- Anchor w/ 150' lines
- Side stanchions w/ life lines
- Single, fixed, electric search light w/ remote control
- Fresh water, salt water, pressure Deck wash down system

---

## Engine and Mechanical Equipment

---

- Trim tabs
- Fire alarm
- Fuel filters
- Bow thrusters
- Air conditioner

- Fire extinguisher
- (2) Bilge blowers
- Oil pressure alarm
- Fire control system
- Fresh water cooling
- Bridge engine controls
- Hydraulic, wheel steering
- Engine temperature alarm
- Thermal, acoustical insulation
- Twin 385 hp. Gas I/B 2003 Crusader 8.1 MPI's w/ 422 hrs.

---

## Electrical System / Equipment

---

- (4) Batteries
- 12v DC electrical system
- Automatic battery charger
- 110v AC electrical system
- Kohler 7.3kW generator w/ 216 hrs.

---

## Exclusions

---

Owner's personal gear and items.

---

## Salesman's Comments

---

"Callahan" is a well designed family cruiser! Her wide beam allows for a very large Main Cabin. She features the upgraded Crusader fresh water cooled 8.1 MPI's. **PLEASE CALL FOR DETAILS!!!**

---

## Exclusions

---

Owner's personal belongings.

---

## Disclaimer

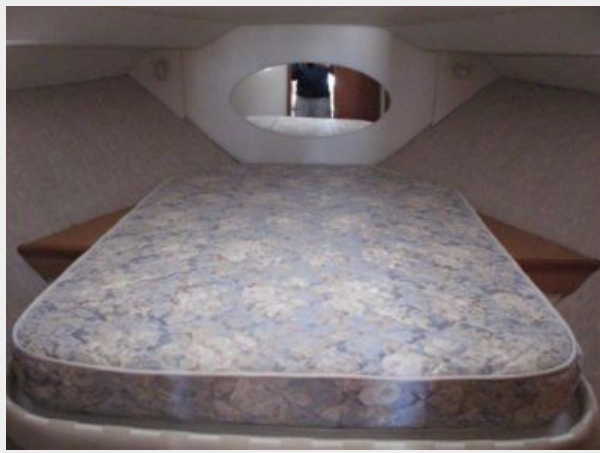
---

The Company offers the details of this vessel or yacht in good faith but cannot guarantee or warrant the accuracy of this information nor warrant the condition of the vessel. A buyer should instruct his representatives, agents, or his surveyors, to investigate such details as the buyer desires validated. This vessel or yacht is offered subject to prior sale, price change, or withdrawal without notice.

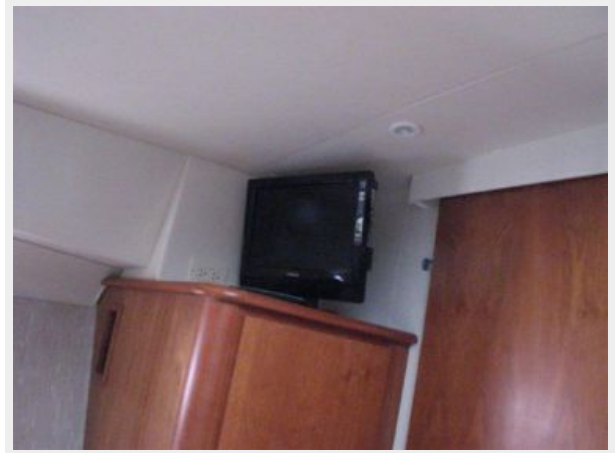


# PHOTOS

**Master Stateroom 1**



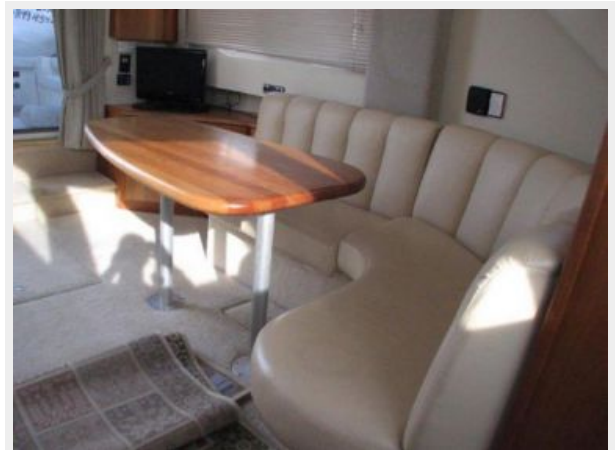
**Master Stateroom 2**



**Salon 1 - Sofa**



**Salon 2 - Dinette**



**Salon 3**



**Head 1**



**Head 2**



**Galley 1**



**Galley 2**



**Helm / Electronics & Navigation 1**



**Helm / Electronics & Navigation 2**



**Deck 1 - Bow**



**Deck 2 - Helm Seating**



**Engine & Mechanical Equipment**





---

# CONTACTS

---

Andrey Shestakov, leading yacht broker of the sales department of Shestakov Yacht Sales Inc. Shestakov Yacht Sales Inc., the official representative of the Miami/Fort Lauderdale FL headquarters.

---

## Contact details

---

Email: [andrey@shestakovyachtsales.com](mailto:andrey@shestakovyachtsales.com)

Web: [shestakovyachtsales.com/en/](http://shestakovyachtsales.com/en/)

---

## Telephones

---

USA: +1(954)274-4435

---

## Office hours

---

Monday – Saturday: **9:00 - 21:00** EDT

Sunday: **closed**

---

## Address

---



Harbour Towne Marina, 850 NE 3rd St,  
STE 213, Dania, FL 33004