

UNNAMED BOAT — SABRE YACHTS



Судостроитель: [SABRE YACHTS](#)

Год постройки: 2015

Модель: Крейсер

Цена: ЦЕНА ЯХТЫ ПО ЗАПРОСУ

Местонахождение: United States

Длина общая: 48' 0" (14.63m)

Ширина: 15' 4" (4.67m)

Мин. осадка: 3' 9" (1.14m)

Купить **Unnamed Boat — SABRE YACHTS** а также выбрать подходящую вам яхту из нашего каталога яхт вам поможет опытный яхтенный брокер Андрей Шестаков. На сегодняшний день компания **Shestakov Yacht Sales Inc.** имеет большое количество яхт в собственном списке продаж, а также тесно сотрудничает со всеми крупными яхтенными производителями по всему миру.

Для того чтобы купить яхту **Unnamed Boat — SABRE YACHTS** а также проконсультироваться по любому вопросу связанному с покупкой, продажей, чартером яхт позвоните по телефону **+7(918)465-66-44**.

ОГЛАВЛЕНИЕ

ОГЛАВЛЕНИЕ	2
ХАРАКТЕРИСТИКИ	4
Обзор	4
Основная информация	4
Размеры	4
Скорость, вместимость и масса	5
Размещение	5
Корпус и палуба	5
Информация о двигателе	5
ПОДРОБНОЕ ОПИСАНИЕ	6
Hull	6
Deck and Hardtop	6
Deck Hardware	6
Helm Station	7
Propulsion	7
Fuel System	7
Steering and Trim Systems	7
12VDC Electrical System	8
120VAC Electrical System	8
Master Stateroom Amidships	8
Master Head	9
Guest Stateroom	9
Guest Head	9
Galley	10
Main Salon	10
Decor	10
Fresh Water System	10
Waste Disposal	11

Safety	11
Optional Equipment	11
Additional Equipment	12
Исключения	12
Отказ от ответственности	12
ФОТОГРАФИИ	13
КОНТАКТЫ	18
Контактная информация	18
Телефоны	18
Время работы	18
Адрес	18

ХАРАКТЕРИСТИКИ

Обзор

The all-new Sabre 48 Salon Express is their fifth pod driven model and she takes full advantage of this technology of this technology in both her performance to maximize ease of operations and in her interior accommodation plan.

The 48's traditional exterior profile belies the contemporary performances of her vee-hull. She cruises at 27 kots and at wide open throttle she'll attain more than 32 knots. With the Zeus pod drive system, turns at speed are as exciting as they are in a fine sports car but perhaps even more exhilarating is the quite that one experiences at cruise speeds.

Her raised cockpit sole brings together the social aspects of the cockpit and main salon and the aft end of the house opens up fully to connect the spaces. Her main salon offers ample seating surfaces for entertaining or simply relaxing to read or enjoy the standard entertainment center. While underway the raised settee to port of the Stidd helm chair is a perfect place for the crew to enjoy the ride. This boat is built with a crew quarters and head arrangement.

This boat comes equipped with electric sunroof with sunscreen, teak decking in aft cockpit, central vacuum system, wet bar in salon, upgraded upholstery in the salon and many other features.

Основная информация

Тип судна: Крейсер

Модельный год: 2015

Год постройки: 2015

Страна: United States

Размеры

Длина общая: 48' 0" (14.63m)

Ширина: 15' 4" (4.67m)

Мин. осадка: 3' 9" (1.14m)

Скорость, вместимость и масса

Водоизмещение: 40000 Pounds

Вместимость воды: 160 Gallons

Объем топливного бака: 525 Gallons

Размещение

Всего кают: 2

Корпус и палуба

Материал корпуса: Fiberglass

Информация о двигателе

Двигатели: 2

Производитель: Cummins

Модель: Zeus QSC 8.3

Тип двигателя: Inboard

Тип топлива: Diesel

ПОДРОБНОЕ ОПИСАНИЕ

Hull

- Modified Deep "V" planing hull design, with shallow pod drive tunnels
- 14 degree deadrise at transom, 23 degree deadrise amidships
- ISO NPG white gelcoat w/vinylester back-up resin
- Bottom, topsides and transom VIP resin infused biaxial E-glass with Corecell SAN foam core
- Stringer system biaxial E-glass with foam core
- Resin Infused E-glass swim platform with molded-in anti-skid surface
- Hull side rubbing strakes
- PVC rub rail with stainless steel cap
- Painted (Urethane) double boot top
- Gold recessed cove stripe

Deck and Hardtop

- ISO NPG gelcoat
- VIP resin infused biaxial E-glass with balsa core
- Molded-in anti-skid deck surfaces
- Bi Fold aft salon door to port
- Sliding windows in salon on cabin sides
- Electric opening window in salon aft bulkhead
- Hinged access door to side deck at helm
- Flush, outward opening, transom door with latch
- Anchor locker with slam latch
- Large lazarette/engine room access hatch in cockpit sole with compression latches

Deck Hardware

- 1 1/4" Diameter type 316 stainless steel perimeter rail system
- (8) 12" Stainless steel cleats (2 fwd, 4 mid ship, 2 in aft cockpit)
- (1) 10" Stainless steel cleat to starboard of windlass as anchor rode tie off
- (4) Custom cast stainless steel mid-rail line chocks
- (2) Custom cast stainless steel skene chocks forward
- (2) Custom folding stainless steel mooring cleats aft
- Custom stainless steel bow pulpit with dual anchor roller for 44# CQR or Delta anchor and "lunch hook"
- Quick anchor windlass, electric rope-chain type
- Flag staff and socket on taffrail
- Burgee staff on bow pulpit
- (6) Low Profile stainless steel hatches w/screens

- (6) Custom stainless steel opening port lights
- Teak toe rails
- Teak cabin side eye-brow
- Custom cast stainless steel "SABRE" medallion

Helm Station

- Cummins DTS single lever electronic controls
- Cummins Smart Craft display (engine data, tank levels, vessel data, alarms)
- Triple windshield wipers with washers
- Ritchie Compass
- Switch controls for horn, running lights, anchor light, engine room blower and optional equipment
- Stazo 400mm custom teak steering wheel with tilt helm and Sabre logo
- Stidd single helm seat with Ultraleather fabric

Propulsion

- Twin Cummins QSC 8.3 550hp electronic, fresh water-cooled engines with Zeus 3800 pod drives, with integrated steering and trim
- 120A, 12V alternators each engine
- (2) Exhaust by-pass mufflers
- Engine room blower
- Engine room vent ducts
- Engine room floor with FRP anti-skid
- White gelcoated engine room
- Mylar face foam noise barrier

Fuel System

- (2) 260 USG diesel fuel tanks port and starboard
- Dual Racor fuel filters with water in fuel probes
- (2) 2" "Diesel" deck fill plates

Steering and Trim Systems

- CMD helm, with joystick
- Trim tabs integrated in CMD Zeus pod drives
- Autopilot integrated in CMD Zeus system
- "Skyhook" GPS position hold system with dedicated GPS receiver

12VDC Electrical System

- Two AGM Group 31 dedicated engine start batteries
- Three AGM 4D deep cycle ship's service batteries
- One AGM Group 24 generator start battery
- Remote control battery switches with controls at helm
- Manual emergency battery crossover switch
- Illuminated main circuit breaker distribution
- Digital battery monitor
- Lighting:
 - St. Maarten amber cabin reading lights
 - High output LED lights in the overhead
 - LED strip lighting in appropriate locations
 - LED engine room lighting
 - Tri-color lights over helm station, red, white, blue
 - Cockpit courtesy lights
- Marine-grade, tinned wire throughout
- 12V DC USB chargers at helm and in all cabins

120VAC Electrical System

- Onan 13.5kw generator including:
 - Onan E series display
 - Dedicated start battery
 - Water drop muffler
 - Cooling water intake strainer
 - Sound shield
 - Transfer switch
- 50A shore power service with Glendinning Cablemaster & 70 ft. cord
- Isolation transformer
- Illuminated main circuit breaker distribution panel
- Digital AC system monitor
- 120V GFCI protected outlets in each cabin and engine room
- 50amp, 3-bank battery charger
- Reverse cycle heat/air conditioning in (3) zones

Master Stateroom Amidships

- Spacious island berth athwartship layout with laminated trim
- Hull side deadlight over headboard
- Shoji style passageway and closet doors
- Shoji style portlight screen panels
- Cherry hull ceilings

- Drawers under berth and in bulkhead aft of berth
- (2) Hanging lockers fore and aft of bed
- LED flat screen TV and DVD player
- Teak and holly sole
- Sound deadening soft headliner panels
- Pocket door to master head compartment

Master Head

- Private access from master stateroom
- Custom tile in WC and shower sole
- Glass vessel style sink
- High gloss finish over solid cherry counter
- Vanity cabinet below sink
- Storage outboard
- Mirror above vanity, cherry framed
- Separate shower stall with clear bi-fold enclosure and glass tile access wall within
- Electric shower sump pump
- Opening port to side deck
- Deck hatch with blind/screen overhead
- Ventilation blower
- Stainless steel towel bars

Guest Stateroom

- Spacious island berth with laminated trim
- Cherry hull ceilings
- Drawers under berth, A/C return grille beside
- Storage lockers, drawers and shelves
- Teak and holly sole
- Sound deadening soft headliner panels
- Pocket door to passageway
- Private access to forward head and shower

Guest Head

- Stainless steel undermount sink
- Shower stall with seat and locker outboard
- Hot and cold pressure water
- Electric shower sump pump
- Storage lockers
- Solid surface vanity top with bullnose

- Towel bars
- Soap dispenser
- Cherry wood trimmed mirror over sink
- Ventilation blower

Galley

- Solid surface galley countertop
- Stainless steel undermount sink with cover and pull-out faucet
- Stainless steel undermount prep sink with cover
- Soap dispenser
- Isotherm stainless steel standup refrigerator (top) and freezer
- Two burner electric cooktop
- Convection microwave with stainless steel face
- Drawers and storage lockers below counter
- Built-in waste basket; recycle bin below steps

Main Salon

- "L" settee to starboard, 5" foam cushions with storage and Sabre tool drawer under
- High Gloss finished table with hi-low pedestal and angled slide mechanism; lowers to coffee table height
- Entertainment unit to port including: flat screen LCD TV 32" on lift with DVD player
- Sound deadening, soft headliner panels
- Raised mates L-shaped settee to port of helm chair
- Stainless steel bi-fold door to cockpit
- Electrically operated window aft of L-settee
- Swing door at helm to starboard side deck
- Deep chart table forward of L-settee

Decor

- Varnished cherry interior finish
- Screens on all opening ports (upgraded)
- Ocean Air screen/blinds on deck hatches
- Ocean Air pleated blinds on side windows and side door
- Drapes on aft curved windows
- Optional fabric and drapery selections
- Dovetailed, varnished maple drawer boxes

Fresh Water System

- Water capacity 160 gallons
- Stainless steel 20 gallon water heater, operates on 110-VAC or engine heat
- Temperature control valve on hot water supply
- Hot and cold water pressure system 12V
- Fresh water spigot in engine room

Waste Disposal

- Polyethylene holding tank with 70 gallon capacity
- Jabsco Quiet Flush fresh water MSD in guest head
- Tecma Eco MSD in master head
- Diaphragm waste pump on holding tank

Safety

- Single Kahlenberg chrome trumpet horn with compressor
- Fire extinguishers, (5) at 2 1/2 lbs.
- Marelon sea valves on all thru-hull fittings below waterline
- Bonding system to safeguard against galvanic corrosion
- Automatic fire extinguishing discharge system in engine space with override
- (3) Automatec 12V electric bilge pumps
- (3) High water switches and alarm

Optional Equipment

- Electric sunroof with sunscreen in lieu of standard two (2) pilot hatches
- FRP molded mast, separate radar platform and satellite pad for sedan hardtop
- Teak decking in aft cockpit including steps
- One (1) additional dimmer switch in master stateroom (salon is standard)
- Beam central vac system with two (2) outlets and a 32' expandable hose
- Dark hull colors
- Anti-skid color (fore and side decks, coach roof, aft cockpit, and recessed area of swim platform)
- Crew quarters with head in lieu of standard utility room
- Wet bar in salon starboard side settee forward including icemaker with inlay on top to coordinate with main salon table with hi-gloss
- Ultraleather upholstery main salon
- Accord shades on all opening ports
- Fusion Marine stereo iPod dock with (4) speakers and remote control
- Reverso oil change system
- Hot and cold transom shower
- Fresh water wash down forward

- Shore water inlet

Additional Equipment

- Prewire for stereo and four speakers (main salon and cockpit)
- Shoji door on forward cabin in lieu of standard
- Splendide washer/dryer combo with a door installed in crew cabin, aft and outboard of custom bureau

Исключения

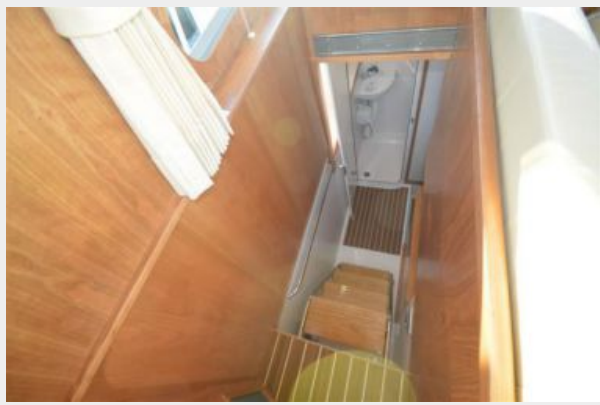
При продаже яхты исключаются личные вещи владельца.

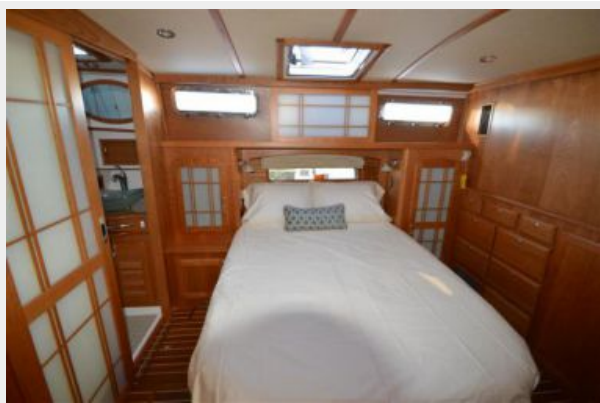
Отказ от ответственности

Компания предоставляет описание судна или яхты добросовестно, но не может гарантировать точность этой информации, а также не ручается за техническое состояние. Покупатель должен проинструктировать своих агентов или оценщиков исследовать представленную информацию более подробно, по собственному желанию. Продажа судна или яхты, изменение цены или снятие с продажи будет происходить без предварительного уведомления.

ФОТОГРАФИИ











КОНТАКТЫ

Андрей Шестаков (Andrey Shestakov) – ведущий яхтенный брокер отдела продаж яхт и судов компании Shestakov Yacht Sales Inc. Официальный представитель Shestakov Yacht Sales Inc. для русскоговорящих клиентов в центральном офисе компании в Майами/Форт Лодердейл/Флорида/США.

Контактная информация

Email: andrey@shestakovyachtsales.com

Web: shestakovyachtsales.com

Телефоны

Краснодарский край: **+7(918)465-66-44**

США, Майами, Флорида: **+1(954)274-4435**

Время работы

Понедельник – Суббота: **9:00 - 21:00**
EDT

Воскресенье: **Закрето**

Адрес



Harbour Towne Marina, 850 NE 3rd St,
STE 213, Dania, FL 33004