

2015 55' VIKING (VK55-420) — VIKING



Судостроитель: VIKING

Год постройки: 2015

Модель: Катер для спортивной рыбалки

Цена: ЦЕНА ЯХТЫ ПО ЗАПРОСУ

Местонахождение: United States

Длина общая: 55' 0" (16.76m)

Ширина: 17' 9" (5.41m)

Мин. осадка: 5' 1" (1.55m)

Купить 2015 55' Viking (VK55-420) — VIKING а также выбрать подходящую вам яхту из нашего каталога яхт вам поможет опытный яхтенный брокер Андрей Шестаков. На сегодняшний день компания Shestakov Yacht Sales Inc. имеет большое количество яхт в собственном списке продаж, а также тесно сотрудничает со всеми крупными яхтенными производителями по всему миру.

Для того чтобы купить яхту 2015 55' Viking (VK55-420) — VIKING а также проконсультироваться по любому вопросу связанному с покупкой, продажей, чартером яхт позвоните по телефону **+7(918)465-66-44**.

ОГЛАВЛЕНИЕ

ОГЛАВЛЕНИЕ	2
ХАРАКТЕРИСТИКИ	4
Основная информация	4
Размеры	4
Скорость, вместимость и масса	4
Размещение	4
Корпус и палуба	4
Информация о двигателе	5
ПОДРОБНОЕ ОПИСАНИЕ	6
Interior	6
Exterior	8
Tower	9
Atlantic Marine Electronics	10
Engine and Mechanical	13
Delivery	13
Исключения	14
Отказ от ответственности	14
ФОТОГРАФИИ	15
Salon	15
Dinette	15
Salon	15
Salon	15
Salon	15
Salon	15
Galley	16
Galley	16
Galley	16
Galley	16

Master Stateroom	16
Master Stateroom	16
Master Head	17
Master TV	17
Forward Stateroom	17
VIP Head	17
Electrical Panel	18
Guest Stateroom	18
Washer/Dryer	18
Engine Room	18
Valve Covers	19
КОНТАКТЫ	21
Контактная информация	21
Телефоны	21
Время работы	21
Адрес	21

ХАРАКТЕРИСТИКИ

Основная информация

Тип судна: Катер для спортивной рыбалки

Подкатегория: Convertible

Модельный год: 2015

Год постройки: 2015

Страна: United States

Размеры

Длина общая: 55' 0" (16.76m)

Ширина: 17' 9" (5.41m)

Мин. осадка: 5' 1" (1.55m)

Скорость, вместимость и масса

Водоизмещение: 77700 Pounds

Вместимость воды: 255 Gallons

Объем топливного бака: 1600 Gallons

Размещение

Всего кают: 3

Всего ком. состава: 2

Корпус и палуба

Материал корпуса: Fiberglass

Информация о двигателе

Двигатели: 2

Производитель: MAN

Модель: V12

Тип двигателя: Inboard

Тип топлива: Diesel

ПОДРОБНОЕ ОПИСАНИЕ

Interior

DECOR

- Accessory kit
- Galley accessory kit
- Prestige Décor
- Carpet throughout - Fabrica Radiance, color Galaxy
- Custom wallpaper material
- Brushed nickel hardware throughout
- Brushed nickel coverplates for switches, receptacles throughout
- Salon door type catches on stateroom doors
- Satin nickel interior light trim throughout
- LED interior lights throughout
- Bar stools (2) in Ultraleather Brisa Distressed w/o backs
- Sofa upgrade, Dewberry in Ultraleather Manila w/storage arm
- Helm and companion chairs in Ultraleather Brisa Distressed Outdoor Buckskin
- Bridge cushions in Ultraleather Brisa Distressed Outdoor Buckskin
- Mezzanine cushions in Ultraleather Brisa Distressed Outdoor Buckskin
- Custom headliner material throughout boat

SALON

- Carpet runner, full canvas
- Electric panel up
- Viking Home Theater
- Cocktail table
- Salon entertainment center top – teak
- Dimmers for quartz lights
- Teak wire box
- Teak trim where Amtico floor meets carpet
- Custom Amtico flooring at salon entranceway
- Teak valances
- 46" flat screen TV
- Clear icemaker
- Salon door w/electric door opener

COMPANIONWAY

- Costa, canvas carpet runner w/step covers

GALLEY

- Undercounter refrigerator and freezer w/drawers
- 110v outlet next to switch on bottom of upper cabinet above sink
- 3-burner recessed range
- Custom Amtico flooring
- Galley overhang
- Satin nickel faucet

DINETTE

- Dimmer on overhead LED lights
- Seating for 4

MASTER STATEROOM

- Mattress Viking Slumber #8
- Dimmer on overhead LED lights
- Teak end table tops
- 26" flat panel TV

MASTER HEAD

- Teak face on lower vanity
- Custom Amtico flooring
- Mirror around upper vanity
- Satin nickel faucet & shower fixtures
- Brushed nickel towel bars & rings

FORWARD STATEROOM

- Mattress Viking Slumber #6
- Layout - VIP crossover forward
- Dimmer on overhead LED lights

FORWARD STATEROOM HEAD

- Teak face on lower vanity
- Mirror around upper vanity
- Custom Amtico flooring
- Satin nickel faucet and shower fixtures
- Brushed nickel towel bars and rings

PORT STATEROOM

- Mattress Viking Slumber #6
- Dimmer on overhead LED lights

HEADS

- Provide overboard discharge for all heads
- Sealand head system

Exterior

COCKPIT

- Mezzanine cockpit
- Plumb transom box as live well w/o window and light
- Dividers in freezer in mezzanine seat
- Live well in sole
- Transom coaming with gate and transom fish box
- Awlgrip lazarette
- Y-valve for fresh & saltwater washdown in cockpit
- Freezer storage in mezzanine seat
- Split lid for cockpit fish box
- Storage lockers under port and starboard coamings
- (2) cablemasters
- Ice machine with discharge into cockpit sole
- Two 24V outlets forward under coaming, one on each side (20 amp max)
- Seawater supply and fitting for additional on-deck live well
- Blue LED rope lighting under cockpit coaming
- Custom: Tri color lights - red, white and blue
- Custom: Threaded cockpit scuppers
- Custom: Teak sole and mezzanine
- Custom: Two 12V outlets forward under coaming - one on each side
- Custom: Stainless bait trays in port lower mezzanine box

DECK/EXT

- Bow cleats fore and aft
- Salon forward window mask - no warranty on cosmetic finish
- Fresh water washdown at bow inside anchor locker
- Stainless steel gas springs for anchor locker hatch
- Anchor bracket in anchor locker
- Side mounted handrails that follow top of salon window

FLYBRIDGE

- Upgraded Release Marine Trillion series helm chairs
- Electronic single-lever controls for helm pod w/bow thruster button in handles
- Release teak helm pod
- Electronic trolling valves
- Clam shell handles for electronics boxes

- Recessed electronics boxes
- Bridge w/o exposed fasteners
- Removable flybridge jumpseat backrest
- Refrigerated bridge drink box
- Bridge freezer box
- Fresh water outlet on bridge
- Single level control handles w/bow thruster button in handles
- Buell air horns
- VHF radio ICOM-604
- Dedicated forward feed for tower w/labeled shutoff valve in forward flybridge locker
- Flybridge Custom: compass in recessed electronics box
- Flybridge Custom: cushions in Ultraleather Buckskin

BILGE

- Awlgrip forward bilge
- Magnetic switches for all bilge lights
- Awlgrip anchor locker

HULL

- Custom color - Shimmering Blue
- Bottom paint: Viking Blue
- Custom non-metallic boot stripe
- DC bow thruster
- Additional fuel tank forward for a total of 3 tanks
- Oval exhaust outlets (linear exhaust)
- Fiberglass side thru-hulls
- Prop pockets to reduce draft

Tower

- (1) Tuna Tower w/molded Top 55' Convertible 7' gap, brushed pipe (2) antenna, stands-offs 3-sided track on perimeter rail
- (6) Recessed lights, Lumitec, LED tri-color (not hooked up)
- (1) Radar pod, Bullet Style #973, sliding door, bracket & runs for teaser reels
- (1) Molded standing platform w/ coupler box on platform
- (1) Molded 2-in-1 Lumitec LED spreader light pod
- (1) Molded single Lumitec LED spreader light forward platform
- (1) Control box 63" w/flush mounted compass
- (2) Recessed electronics boxes with lids
- (1) Paint top of control box satin black
- (1) Tower sunshade molded w/ internal tracks, 3 welded antenna mounts
- (1) Bench seat with backrest

- (1) Antenna mount SAT TV dome molded fiberglass mold #708
- (1) Antenna mount SAT V3 dome on hardtop molded fiberglass mold #2156
- (1) Bridge rail 3-sided, leg-to-leg, double aft to outer main legs
- (6) Rod holder polished weld to aft bridge rail, PBT style
- (6) Rod holder polished aft legs, PBT style
- (1) Controls & Steering MAN (no LCD on readout)
- (1) 41' Outrigger Rupp "Big Riggs HD", 41' - 3 Spreader Bridge Release super aft bar
- (1) Rupp Outriggers
- (1) Rigger locks
- (1) Center Rigger Rupp
- (1) Set of Rupp Rollers
- (2) Rupp teaser line collars with eye bolts
- (2) Recessed electric teaser reels MIYA EPOCH US9-HD 24V
- (1) Enclosure 3-sided track to track, aft edge of helm, EZ2CY
- (1) Powder coated aluminum flangeless track
- (3) Air vent forward top panels
- (1) Nav. lights port, starboard, stern molded (wired & hooked up)
- (1) Drop down electronics box w/electric actuator
- (1) Wash down water in tower
- (2) Recessed tri-color lights in tower platform
- (2) Recessed tri-color lights in tower sunshade
- (6) recessed lights, (3) spreader lights, teaser reels, masthead/anchor light, bond tower
- (1) Upgrade tower forward X brace, side diagonals & hardtop braces to contour style
- (1) Control box cover

Atlantic Marine Electronics

RADAR

- (1) Furuno Navnet 3D DRS25A 25KW 96NM radar less array
- (1) Furuno-XN3A/6 - 6' radar array
- (1) Furuno Navnet 3D MFDBB processor multifunction system processor for radar, sounder & plotter set to dual monitor support on bridge
- (2) KEP MGB-15 glass bridge LCD 15" monitor
- (1) Furuno GP330b GPS antenna
- (3) Atlona AT-DVI15SRS DVI extender
- (1) Extron 4 port DVI distribution amp
- (4) Dual link 16' M-M video dist DVI-D cable
- (1) Atlona AT14050 HDMI M to DVI F adapter

PLOTTER

- (1) Garmin GPSmap8208 - 8" TS MFD preloaded with coastals charts
- (1) Atlona AT-DVI15SRS DVI extender

- (1) Extron 4 port DVI distribution amp view GPSmap8208 on helm displays
- (1) Dual link 16' M-M video dist DVI-D cable
- (2) Garmin 40' network cable
- (1) Garmin GNT 10 N2K transceiver for use w/ optional accessories, such as quatix watch
- (1) Garmin GMS10 network expander
- (1) Garmin wifi adapter for Bluechart Mobile
- (1) Garmin GXM52 weather antenna

NAVNET PERIPHERALS

- (1) Furuno FA50 12/24VDC AIS black box
- (1) Furuno Navnet 3dD HUB101 ethernet hub
- (4) Furuno 5M RJ45 LAN cable
- (1) Digital yacht SPI2000 VHF-AIS splitter

NETWORK

- (8) Maretron cm micro tee male/female/female
- (5) N2K mid double-ended cordset 2m gray
- (3) N2K mid double-ended cordset 3m gray
- (1) Micro/mid powertap tee w/5m drop
- (2) N2K micro termination resistor male
- (1) Micro bulkhead feed thru MHF-CM
- (30) Maretron DG1 N2K mid bulk cable gray
- (4) Maretron FA-CF-ST female NMEA connector
- (4) Maretron FA-CM-ST male NMEA connector
- (1) Puls DC/DC 96W 18-32VDC in VDC converter

SOUNDER

- (1) Furuno FCV1200BB sounder w/landscape control
- (1) Furuno CA200B-8B 2KW 200KHZ transducer
- (1) Furuno CA50BL-12hr 2KW 50KHZ transducer
- (1) Aten VS94A 4 port VGA splitter, view sounder on all helm displays
- (4) Extron 6' M-M VGA cable
- (1) KEP MGB-15 glass bridge LCD 15" monitor

SOUNDER 2

- (1) Garmin GSD-26 CHIRP video sounder module
- (1) Airmar PM275LHW 1KW transducer

DIGITAL DEPTH/TEMP

- Furuno RD33 data organizer & display
- Furuno 235DHTLMSE HI-PRECTMP2 transducer

AUTOPILOT

- (1) Garmin GHP12 autopilot w/GHC20
- (1) Garmin AP shadow drive sensor
- (1) Garmin RRU GRF10 sensor
- (1) Garmin GRF10 15M extension cable
- (1) Garmin GHP12/20 CCU 15M extension cable
- (1) Garmin 24" actuator power cable
- (1) Garmin autopilot installation kit

VHF

- (1) ICOM IC-M604 black VHF radio
- (2) ICOM VHF flush mount F/502,602,802
- (2) Shakespeare Phasell 6018 18' VHF antenna
- (2) AME tower/hardtop RUPP mount pak
- (2) 3/4" antenna standoff pipe
- (2) Poly-planer external (blk) VHF speaker, mount overhead in teaser reel box

STEREO

- (1) Fusion MS-IP700i 12V marine stereo, AM/FM, VHF receiver, internal IPOD/IPHONE/USB dock
- (1) Fusion MS-IP700i drop cable
- (1) Shakespeare-SRA-40 Sirius antenna
- (1) JL audio MHD600/4 4-channel amplifier
- (1) JL audio 7.7" coaxial M770-CCX speakers, bridge-1 pair fwd, 1 pair aft

SATCOM

- (1) KVH Tracphone V3-IP white base w/ICM
- (1) KVH tapered V3 antenna mount
- (1) Panasonic 2-line cordless phone, KX-TG9381T
- (1) Netgear GS801 8 port gigabit switch
- (1) APC 750VA UPS backup

CAMERA

- (1) GOST PM-Mini IR Ball camera, engine room forward looking aft
- (1) 3V dual comp VID amp 2 in 3 out amp MDA

SAT TV

- (1) KVH Tracvision HD7 satellite TV
- (1) DIRECTTV HR24 HD/DVR DSS receiver, salon
- (2) KVH DIRECTV H25 HD DSS receiver

- (1) APC BE650G UPS

SALON

- (1) URC MX-5000i remote control
- (1) URC MRF-350i remote control base
- (1) URC PSX-2 Ipad dock, salon
- (1) Netgear WNDR4500 N900

SAFETY

- (1) GOST Nav-Tracker Evolution 2.0

TOWER

- (1) Garmin GPSMAP8208 - 8" TS MFD, preloaded with coastals charts
- (1) Furuno RD33 data organizer & display
- (1) ICOM HM-162 B black VHF Command Mic
- (1) ICOM OPC-1541 VHF Command Mic extension

NET

- (1) Lumishore TIX801-CCP-FF-2 color change - two FF UWL lights w/ E.O.S controller
- Option: Lumishore WIFI control

Engine and Mechanical

- MAN V12 1550 CRM: 1550 MHP
- 700 GPD watermaker w/auto backflush
- Fuel priming pumps 24v
- Generator gas-water separator for standard generator
- Awlgrip brass thru-hulls & sea strainers in engine room & forward bilges
- Snow white fuel filters
- Line from oil change system to cockpit dockside box
- 110v outlet on aft bulkhead at entranceway
- All pumps snow white (except fresh water pump)
- Backup pump for seawater system plumbed in parallel
- Tee in dockside water manifold to fill water tank from cockpit

Delivery

- Water delivery kit with tool set

Исключения

При продаже яхты исключаются личные вещи владельца.

Отказ от ответственности

Компания предоставляет описание судна или яхты добросовестно, но не может гарантировать точность этой информации, а также не ручается за техническое состояние. Покупатель должен проинструктировать своих агентов или оценщиков исследовать представленную информацию более подробно, по собственному желанию. Продажа судна или яхты, изменение цены или снятие с продажи будет происходить без предварительного уведомления.

ФОТОГРАФИИ

Salon



Dinette



Salon



Salon



Salon



Salon



Galley



Galley



Galley



Galley



Master Stateroom



Master Stateroom



Master TV



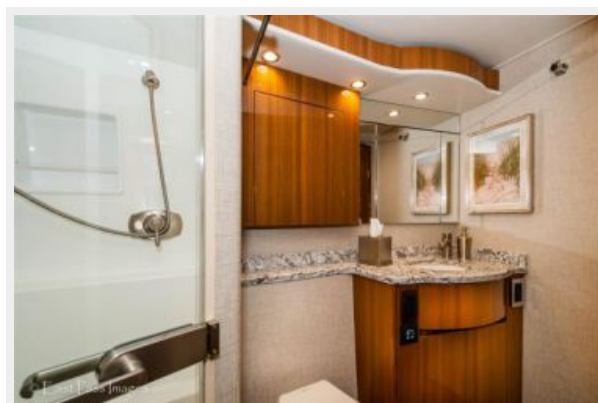
Master Head



Forward Stateroom



VIP Head



Guest Stateroom



Electrical Panel



Washer/Dryer



Engine Room



Valve Covers





КОНТАКТЫ

Андрей Шестаков (Andrey Shestakov) – ведущий яхтенный брокер отдела продаж яхт и судов компании Shestakov Yacht Sales Inc. Официальный представитель Shestakov Yacht Sales Inc. для русскоговорящих клиентов в центральном офисе компании в Майами/Форт Лодердейл/Флорида/США.

Контактная информация

Email: andrey@shestakovyachtsales.com

Web: shestakovyachtsales.com

Телефоны

Краснодарский край: **+7(918)465-66-44**

США, Майами, Флорида: **+1(954)274-4435**

Время работы

Понедельник – Суббота: **9:00 - 21:00**
EDT

Воскресенье: **Закрето**

Адрес



Harbour Towne Marina, 850 NE 3rd St,
STE 213, Dania, FL 33004