

SOMETHING ABOUT MARY — CRUISERS YACHTS



Builder: [Cruisers Yachts](#)

LOA: 42' 0" (12.80m)

Year Built: 1997

Beam: 14' 0" (4.27m)

Model: Cruiser

Price: PRICE ON APPLICATION

Location: United States

Our experienced yacht broker, Andrey Shestakov, will help you choose and buy a yacht that best suits your needs **Something About Mary — Cruisers Yachts** from our catalogue. Presently, at **Shestakov Yacht Sales Inc.**, we have a wide variety of yachts available on our sale's list. We also work in close contact with all the big yacht manufacturers from all over the world.

If you would like to buy a yacht **Something About Mary — Cruisers Yachts** or would like help answering any questions concerning purchasing, selling or chartering a yacht, please call **+1(954)274-4435**

TABLE OF CONTENTS

TABLE OF CONTENTS	2
SPECIFICATIONS	4
Overview	4
Basic Information	4
Dimensions	4
Speed, Capacities and Weight	4
Accommodations	4
Hull and Deck Information	4
Engine Information	5
DETAILED INFORMATION	6
Manufacturer's Description	6
Accommodations	6
Galley	6
Electronics	6
Deck Equipment	6
Electrical Equipment	6
Disclaimer	6
Exclusions	7
Disclaimer	7
PHOTOS	8
Exterior	8
Exterior	8
Exterior	8
Cockpit	8
Cockpit	8
Helm	8
Helm	9
Galley	9

Galley	9
Dinette	9
Forward Head	9
Forward Stateroom	9
Mid Cabin	10
Mid Cabin	10
Mid Cabin Head	10
Engine Room	10
Engine Room	11
Engine Room	11
Engine Room	11
CONTACTS	12
Contact details	12
Telephones	12
Office hours	12
Address	12

SPECIFICATIONS

Overview

The 1997 Cruisers 4270 Express's sleek lines hide an interior offering more room than any other express in its class. With diesel power this is a lot of boat for the value!

Basic Information

Category: Cruiser

Sub Category: Express

Model Year: 1997

Year Built: 1997

Country: United States

Vessel Top: Bimini Top

Dimensions

LOA: 42' 0" (12.80m)

Beam: 14' 0" (4.27m)

Speed, Capacities and Weight

Displacement: 19500 Pounds

Water Capacity: 100 Gallons

Holding Tank: 50 Gallons

Fuel Capacity: 400 Gallons

Accommodations

Total Cabins: 2

Total Heads: 2

Hull and Deck Information

Hull Material: Fiberglass

Engine Information

Engines: 2

Manufacturer: Caterpillar

Model: 3126TA

Engine Type: Inboard

Fuel Type: Diesel

DETAILED INFORMATION

Manufacturer's Description

Inside Cruisers 4270 Express's sleek lines hide an interior offering more room than any other express in its class. The 4270's unique design incorporates a full-aft stateroom (with either twin beds or a single king-size bed), plenty of standing headroom, and a private stand-up head with shower. The aft suite includes a changing area with ample closet and dresser storage, plus a full-length mirror. The 4270 includes a fully equipped U-shaped galley and dinette. A roomy cockpit with double helm seat, companion double lounge, and a rear cockpit seat accommodates cruisers, while a well-appointed wet bar with refrigerator/ice maker offers space for food and refreshments.

Accommodations

Air conditioning/heat VacuFlush heads (2) Sony TV's-Cabin, Mid Cabin LCD TV with surround stereo-Master Stateroom

Galley

Norcold refrigerator Kenyon (3) burner electric stove Sharp microwave oven Black & Decker Coffee Maker Parquet flooring

Electronics

Garmion GPDmap 7405 Raytheon R41XX Radar Raytheon 398 GPS Raytheon Ray202 VHF Radio Lowrance Depthsounder Clarion stereo with CD and helm remote

Deck Equipment

Bimini top with enclosure curtains Cockpit wet bar with U-Line refrigerator/ice maker Cockpit carpeting Swim platform with ladder Maxwell windlass

Electrical Equipment

Kohler generator Battery charger

Disclaimer

The Company offers the details of this vessel in good faith but cannot guarantee or warrant the accuracy of this information nor warrant the condition of the vessel. A buyer should instruct his agents, or his surveyors, to investigate such details as the buyer desires validated. This vessel is offered subject to prior sale, price change, or withdrawal without notice.

Exclusions

Owner's personal belongings.

Disclaimer

The Company offers the details of this vessel or yacht in good faith but cannot guarantee or warrant the accuracy of this information nor warrant the condition of the vessel. A buyer should instruct his representatives, agents, or his surveyors, to investigate such details as the buyer desires validated. This vessel or yacht is offered subject to prior sale, price change, or withdrawal without notice.

PHOTOS

Exterior



Exterior



Exterior



Cockpit



Cockpit



Helm



Helm



Galley



Galley



Dinette



Forward Stateroom



Forward Head



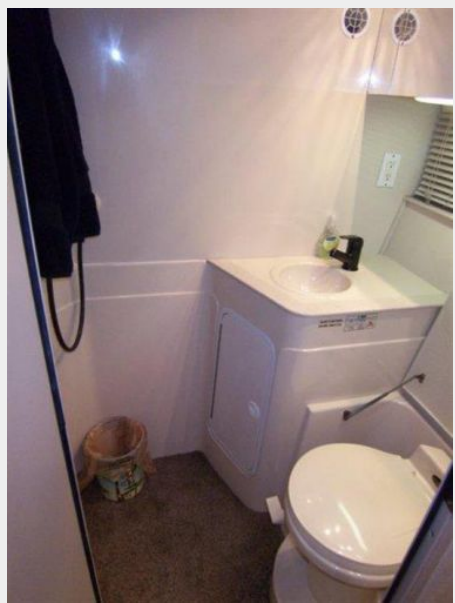
Mid Cabin



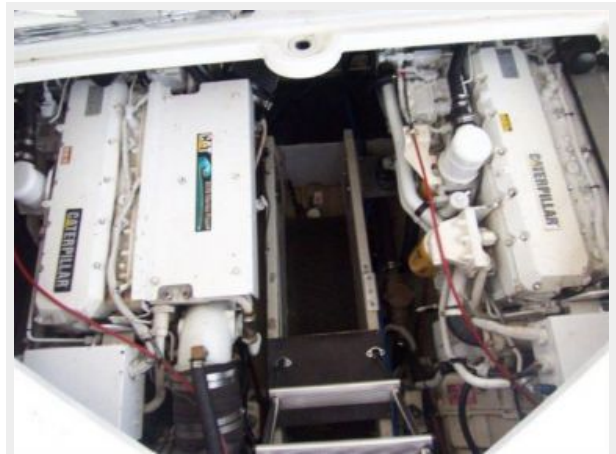
Mid Cabin



Mid Cabin Head



Engine Room



Engine Room



Engine Room



Engine Room



CONTACTS

Andrey Shestakov, leading yacht broker of the sales department of Shestakov Yacht Sales Inc. Shestakov Yacht Sales Inc., the official representative of the Miami/Fort Lauderdale FL headquarters.

Contact details

Email: andrey@shestakovyachtsales.com

Web: shestakovyachtsales.com/en/

Telephones

USA: +1(954)274-4435

Office hours

Monday – Saturday: **9:00 - 21:00** EDT

Sunday: **closed**

Address



Harbour Towne Marina, 850 NE 3rd St,
STE 213, Dania, FL 33004