

2015 VIKING 66 CONVERTIBLE (VK66-330) — VIKING



Судостроитель: [VIKING](#)

Год постройки: 2015

Модель: Катер для спортивной рыбалки

Цена: ЦЕНА ЯХТЫ ПО ЗАПРОСУ

Местонахождение: United States

Длина общая: 66' 0" (20.12m)

Ширина: 19' 1" (5.82m)

Макс. осадка: 5' 5" (1.65m)

Купить 2015 Viking 66 Convertible (VK66-330) — VIKING а также выбрать подходящую вам яхту из нашего каталога яхт вам поможет опытный яхтенный брокер Андрей Шестаков. На сегодняшний день компания Shestakov Yacht Sales Inc. имеет большое количество яхт в собственном списке продаж, а также тесно сотрудничает со всеми крупными яхтенными производителями по всему миру.

Для того чтобы купить яхту 2015 Viking 66 Convertible (VK66-330) — VIKING а также проконсультироваться по любому вопросу связанному с покупкой, продажей, чартером яхт позвоните по телефону **+7(918)465-66-44**.

ОГЛАВЛЕНИЕ

ОГЛАВЛЕНИЕ	2
ХАРАКТЕРИСТИКИ	4
Основная информация	4
Размеры	4
Скорость, вместимость и масса	4
Размещение	4
Корпус и палуба	4
Информация о двигателе	5
ПОДРОБНОЕ ОПИСАНИЕ	6
Interior	6
Exterior	9
Tower	11
Atlantic Marine Electronics Package	12
Release Marine	16
Engine & Mechanical	16
Delivery	16
Исключения	16
Отказ от ответственности	17
ФОТОГРАФИИ	18
Sistership galley	18
Sistership Salon & Galley	18
Sistership dinette	18
Sistership master stateroom	18
Sistership head	18
Sistership master stateroom	18
Sistership stateroom	19
Sistership head	19
Sistership head	19

Sistership stateroom	19
Sistership head	20
Sistership cockpit	20
Sistership helm	20
Sistership livewells	20
Sistership cockpit	20
Sistership rod holders	21
Sistership cockpit	21
Sistership cockpit	21
Sistership cockpit	21
Sistership flybridge	22
Sistership helm	22
Sistership engine room	22
Sistership engine room	22
Standard 4 stateroom layout	23
Open bridge layout	23
Sistership running profile	23
КОНТАКТЫ	24
Контактная информация	24
Телефоны	24
Время работы	24
Адрес	24

ХАРАКТЕРИСТИКИ

Основная информация

Тип судна: Катер для спортивной рыбалки

Модельный год: 2015

Год постройки: 2015

Страна: United States

Размеры

Длина общая: 66' 0" (20.12m)

Ширина: 19' 1" (5.82m)

Макс. осадка: 5' 5" (1.65m)

Скорость, вместимость и масса

Водоизмещение: 102875 Pounds

Вместимость воды: 340 Gallons

Объем топливного бака: 2015 Gallons

Размещение

Всего кают: 4

Всего ком. состава: 5

Корпус и палуба

Материал корпуса: Fiberglass

Информация о двигателе

Двигатели: 2

Производитель: Caterpillar

Модель: C32A

Тип двигателя: Inboard

Тип топлива: Diesel

ПОДРОБНОЕ ОПИСАНИЕ

Interior

DECOR

- Prestige décor
- Appliqued bedspread and shams in master stateroom
- Wrapped hatch carpet installation
- Brushed nickel hardware throughout
- Brushed nickel cover plates for switches, receptacles throughout
- Salon door type catches on stateroom doors
- Satin nickel interior light trim throughout
- Led interior lights throughout
- Interior doors stile & rail random teak
- Accessory kit
- Sofa upgrade; dewberry style
- Custom décor
- Bridge cushions: Ultra leather buckskin
- Custom mezzanine cushions in Ultra leather buckskin

SALON

- Cocktail table
- Bose V35 entertainment system with Blue Ray
- Salon door with electric door opener
- Dimmers for quartz lights
- Teak wire box
- Teak valances
- 46" flat screen television
- Teak trim where amtico floor meets carpet
- Teak strips in salon headliner
- Custom amtico flooring at salon at entranceway
- Switch for lights in fighting chair at salon main panel
- Teak veneered base for larger diameter bar stools
- Rectangular cocktail table
- 50" Samsung TV above dinette with storage behind
- Crown molding in salon, galley and dinette
- Hinge lid on cabinet between salon and dinette sofas
- Carpet runner, full canvas
- Companionway: Costa, canvas carpet runner with step covers
- Companionway: Vertical teak strips between wall panels

SALON DAY HEAD

- Custom antico flooring
- Satin nickel faucet
- Brushed nickel towel bars and rings

GALLEY

- Trash compactor
- Custom countertop
- 110V outlet next to switch on bottom of upper cabinet above sink
- Stainless steel sink undermount
- Satin nickel faucet
- Mirror backsplash
- Custom antico flooring
- Freezer located outboard
- Mirror backsplash

DINETTE

- Dimmer on overhead LED lights
- AC receptacle under dinette table
- Mappa burl dinette table with teak pedestal

MASTER STATEROOM

- Mattress Viking slumber #8
- Additional telephone outlet
- Teak end table tops
- 46" flat screen TV
- Teak crown molding
- Full length mirror on inside of stateroom door
- Teak framed mirror above credenza

MASTER STATEROOM HEAD

- Teak face on lower vanity
- Custom antico flooring
- Mirror around upper vanity
- Satin nickel faucet and shower fixtures
- Brushed nickel towel bars and rings
- Mirror ceiling

- Exhaust fan vent in shower

FORWARD STATEROOM

- Mattress Viking slumber #6
- DVD Player

- 32" flat screen TV

FORWARD STATEROOM HEAD

- Teak face on lower vanity
- Mirror around upper vanity
- Custom amtico flooring
- Satin nickel faucet and shower fixtures
- Brushed nickel towel bars and rings
- Custom: one piece frameless shower door
- Exhaust fan vent in shower

STARBOARD STATEROOM

- Teak locker
- 19" flat screen TV
- Box at top bunk for storage

STARBOARD STATEROOM HEAD

- Mattress Viking slumber #6
- Teak face on lower vanity
- Brushed nickel bars and rings
- Satin nickel faucet and shower fixtures
- Exhaust fan vent in shower

CREW STATEROOM

- Mattress Viking slumber #6
- Teak locker top
- Dimmer on overhead led lights
- Single drawer below lower bunk

CREW STATEROOM HEAD

- Teak face on lower vanity
- Custom amtico flooring
- Satin faucet and shower fixtures
- Brushed nickel towel bars and rings
- Mirror around upper vanity
- Key lock on both sides of engine room access door
- Exhaust fan vent in shower

HEADS

- Overboard discharge for all heads

Exterior

FLYBRIDGE

- Electronic trolling valves
- Removable flybridge jumpseat backrest
- Recessed electronics boxes
- Bridge without exposed fasteners
- VHF radio icom-604
- Refrigerated bridge drink box
- Freezer box
- Fresh water outlet on bridge
- Single lever control handles with bow thruster button in handles
- Handrail on side of helm console above helm access door
- Compass in electronics panel
- Release teak helm pod
- 12-volt accessory power outlet
- Stainless steel gas springs on flybridge bench seats
- Valve controlling tower water feed
- Drip dry foam for flybridge cushions
- Switch in radio box for electronic drop-down overhead box in hardtop
- Switch for drop down box
- Bolster style cushions on flybridge
- Watermaker control panel on flybridge
- Aft storage at side bench seats for longer rod storage under seats
- Costa, mount backrest cushion higher on forward facing seat forward of console
- Angle on removable flybridge jumpseat backrest
- Split radio box lids
- Clamshell handles for electronics box lids

COCKPIT

- Refrigerated cockpit step box
- Live well in sole
- Transom coaming with gate and transom fish box
- Mezzanine cockpit
- Awlgrip lazarette
- Y-valve for fresh and saltwater wash down in cockpit
- Teak cockpit sole
- Provide freezer storage in mezzanine seat
- Storage lockers under port and starboard coamings
- Split lid for cockpit fish box
- Refrigerated port mezzanine undermounted step box
- Refrigerated starboard mezzanine undermounted step box
- Cruisair "cool breeze" mezzanine air system

- Plumb transom box as live well without window and light
- Crushed ice machine with discharge in port mezzanine box
- Two 24V outlets forward under coaming
- Tri-color lights in cockpit overhand red, white, and blue
- Tri-color rope lights under coaming red, white, and blue
- Threaded scupper screens
- Cockpit cover
- Teak cockpit, mezzanine and ladder treads
- Reinforced under fighting chair deck mount
- Plumb fishbox drain
- Removable tuna tubes with seawater supply
- Costa, (2) armrest cushions with drink holders

DECK/EXT:

- Lewmar V4 stainless steel windlass (gypsy and drum)
- Recessed trim tab covers
- Fresh water washdown at bow inside anchor locker
- Stainless steel gas springs for anchor locker hatch
- Anchor bracket in anchor locker
- Side mounted handrails that follow top of salon window
- Bow rail
- Sliding fender track under rub rail
- Custom line-chain combination
- Carbon fiber in deck house laminate
- Light with switch in anchor locker
- Removable stainless steel anchor fairlead

BILGE

- Awlgrip forward bilge
- Magnetic switches for all bilge lights
- Awlgrip anchor locker

HULL

- Oval exhaust outlets (linear exhaust)
- Fiberglass side thru-hulls
- Prop pockets to reduce draft
- Additional fuel tank forward for a total of (3) tanks
- Seakeeper
- Seakeeper gyro stabilizer
- Performance package
- Custom non-metallic boot stripe

Tower

- (1) Tuna tower with molded top 66' convertible 9' gap, brushed pipe, (2) antenna, stands-offs, no halyards, 3-sided track on perimeter rail
- (6) Hardtop lights Lumitec mirage tri-color led lights with fiberglass recess (blue, white, and red)
- (1) Radar pod large oval style, mold #973 with sliding door for teaser reels
- (1) Molded standing platform with coupler box on platform
- (1) Molded 3-in-1 24V LED light pod with stainless steel bezel
- (1) Molded 24V led light forward platform stainless steel bezel
- (1) Control box 63" with flush mounted compass
- (1) Large single recessed electronics box with lid port side
- (1) Control box cover
- (1) Satin black control box
- (1) Tower sunshade molded with internal tracks, 5 welded antenna mounts
- (1) Molded SAT TV dome mount mold #708
- (1) Satin black tower sunshade frame
- (1) Antenna mount SAT V3 dome hardtop fiberglass molded into radar pod
- (1) Bridge rail, leg to leg, double aft to outer main leg
- (8) Rod holder polished weld to rail Palm Beach Tower style
- (6) Rod holder polished aft legs 3-p-3-s Palm Beach Tower style
- (1) Controls and steering CAT 360 controls top mount (no LCD readout)
- (1) U-shaped safety rail around ladder opening
- (1) 43' outrigger rupp bigg riggs, HD 3 spreader, bridge release solid aft bar installed
- (1) Rigger lock
- (1) Rupp rollers installed on outriggers
- (4) Teaser line collars
- (1) Outrigger rupp
- (1) Center rigger rupp
- (2) Recessed electric teaser reels miya epoch US9 HD 24V
- (1) Wash down water in tower
- (1) Flag staff aft
- (1) Navigation lights port and starboard molded (wired and hooked up)
- (1) Electronics box electric fold down
- (1) Bench seat with backrest
- (1) Enclosure 3-sided track to track to edge jump seat backrest, EZ2CY
- (3) Air vents forward top panels
- (1) Powder coated aluminum flangeless track
- (1) (3) spreader lights, teaser reels, masthead lights, anchor light under control box, bond tower, (6) tri-color hardtop lights
- (1) Weld flag staff each side platform perimeter rail
- (1) Rupp outrigger stainless steel grommets mounted in cockpit gunnels

- (2) Lumitec mirage (2) tri-color led lights with fiberglass recess in sunshade
- (1) Wire (2) lumitec mirage tri-color led lights underneath sunshade, (2) lumitec mirage tri-colored LED lights underneath platform
- (2) Welded teaser line grommets with inserts
- (2) Stainless steel teaser line thru fittings underside of hardtop
- (2) Lumitec mirage tri-colored led lights under platform w/fiberglass recess
- (1) Tower forward X brace, side diagonals, and hardtop brace to contour style
- (1) Hardtop, platform, tower sunshade, control box

Atlantic Marine Electronics Package

RADAR

- Furuno Navnet 3D 25KW 96NM Radar
- Furuno 6' radar array

SPOTLIGHT

- ACR RCL100 spotlight mounted on standing platform

PLOTTER

- Furuno Navnet 3D MFDBB processor
- Furuno GP330b GPS antenna
- KEP 17" LED glass bridge marine monitor
- Extron DA2 DVI distribution AMP
- Extron 4 port DVI distribution AMP
- Atlona AT-DVI15SRs DVI extender
- Video DVI-D cable 10' M-M
- Atlona AT14050 HDMI M to DVI F adapter view NN3D on salon TV

PLOTTER 2

- Garmin GPSMAP8212 12" TS MFD mount in drop-down box
- Garmin GXM52 weather antenna
- Garmin GNT 10 N2K transceiver
- Garmin WIFI adapter for bluechart mobile
- Atlona AT-DVI15SRS DVI extender
- Extron 4 port DVI distribution AMP on helm displays
- Atlona AT14050 HDMI M to DVI F adapter on salon TV
- Garmin GMS10 network expander
- Garmin 40' network cable
- Garmin remote input device-grid

NAVNET PERIPHERALS

- Furuno Navnet 3D HUB101
- Furuno 10M LAN cable for Navnet
- Furuno 5M RJ45 LAN cable
- Furuno FA50 12/24VDC AIS black box
- Shakespeare Phaselll 6396 4' AIS antenna

SATCOM

- KVH tracphone V3-IP white base with ICM
- KVH tapered V3 antenna mount
- Rogue pro WIFI converter/bridge
- Panasonic 2-line cordless phone
- APC BE650G UPS
- NETGEAR WNDR4500 N900
- Modem sierra wireless GX440-ATT
- Sierra wireless antenna
- PC switch RJ45

SATTV

- KVH tracvision HD7 SAT TV with triamericas LNB
- Direct TV HR24 HD/DVR DSS receiver in salon and master stateroom
- KVH Direct TV H25 HD DSS receiver
- KVH H25 DTV receiver RF remote
- KVH 8 out active multiswitch
- APC PRO 1000 BR1000G UPS
- Component video to Svideo/Comp converter
- Video AMP MDA 5V composite video

COCKPIT

- Fusion MS-NRX200i wired remote cockpit
- JL audio MHD600/4 4-chan amplifier
- James loudspeaker 42UE/OW 4" 2-way under gunwale

THERMAL IMAGING

- FLIR M625L dual payload therm/low light provide control via Garmin
- Garmin network POE isolation coupler
- Video AMP MDA 5V composite video
- Plotter ethernet switch
- FLIR power over ethernet injector

PC

- Boatranet application server
- Maringo USB-A6 PC USB outlet

STEREO

- Fusion MS-IP700i stereo
- Fusion MS-IP700i drop cable
- Fusion MS-ACSXV Sirius/XM tuner
- JL audio 7.7" white coaxial speakers
- JL audio amplifier
- Shakespeare SRA-40 sirius antenna

NETWORK

- Maretron CM micro tee
- N2K MID double-ended cordset 1M
- Micro/MID powertap tee
- N2K micro termination resistor
- Maretron DGI N2K MID bulk cable
- Puls DC/DC 96W 18-32VDC in VDC converter
- Maretron FA-CD-ST connector
- Maretron FA-CM-ST connector
- N2K MID double-ended cordset2M
- N2K MID double-ended cordset 3M

MASTER STATEROOM

- URC WIFI remote control
- URC MRX-2 network base station
- Blu-Ray player 3D Samsung BD-F7500
- Xantech CSM1 current sensor
- Xantech connecting block current sensor
- Xantech 12 volt ERGPS power supply
- Apple TV digital multimedia receiver

SALON

- URC MRX-10 master controller
- URC apple IOS total control
- URC WIFI remote control
- URC RMK-1 1U rack mounting kit
- URC cable for MSC400
- URC SEN-CCLS contact sensor
- IPOD dock

- Apple TV digital multimedia receiver
- Direct TV cinema connection kit

CAMERA

- Gost PM-Mini IR ball camera; 3-engine room,1-seakeeper
- PM miniball camera mount
- Color quad camera switch
- Video AMP MDA 5V composite video

TOWER

- Garmin GPS
- ICOM HM-162 VHF command MIC
- ICOM VHF command MIC extension
- Fusion MS-NRX200i wired remote
- JL audio M650-CCX-W stereo speaker control box

AUTOPILOT

- Garmin GHP20 viper autopilot with GHC20
- Garmin autopilot installation kit
- ICOM IC-M604 black VHF radio
- ICOM MB75 VHF flush mount
- Shakespeare 18' VHF antenna
- AME tower/hardtop rupp mount pak
- 3/4" antenna standoff pipe
- Poly-planar external VHF speaker

SOUNDER

- Furuno sounder with landscape control
- Furuno 50KHZ transducer
- Furuno 200KHZ transducer
- KEP 17" LED glass bridge marine monitor
- ATEN VS94A 4 port splitter
- Extron 6' M-M VGA cable

SOUNDER 2

- Garmin GSD-26 chirp video sounder module
- Airmar 1KW transducer

NET

- Lumishore TIX801-two FF UWL lights with EOS controller
- Lumishore TIX801-CCP-FF color change single underater light

- Lumishore 5M DMX extension cable
- Enttec ODE module
- Technec 5-PIN SLR to RJ45 adapter
- Furuno MM3-V90-6PO Navnet chart
- Furuno MM3-R90-8G0 Navnet 3D chart
- Garmin G2 vision US513L chart

Release Marine

- (3) custom helm chairs, (3) custom trillion fighting chairs

Engine & Mechanical

- CAT C32A 1925 MHP with CAT 360
- Access door to crews quarters
- Generator gas-water separator for starboard generator
- Awlgrip brass thru-hulls & sea strainers in engine room and forward bilges
- Snow white fuel filters
- Line from oil change system to cockpit dockside box
- 110V outlet on aft bulkhead at entranceway
- Clear acrylic shaft log access covers
- Generator gas-water separator for starboard generator
- Snow white PVC trim
- 1400 gpd watermaker with auto backflush
- Additional 21.5KW generator
- Awlgrip tiller arms and all brass parts in lazarette
- Dual power steering
- Back-up fuel transfer pump in parallel
- Auxiliary DC fresh water pump
- Two tool boxes, 4-drawer 12" wide
- Plumb watermaker for dockside hookup
- Tee in dockside water manifold to fill water tank from cockpit
- Deck fill for fresh water tank

Delivery

- Water delivery kit with tool set

Исключения

При продаже яхты исключаются личные вещи владельца.

Отказ от ответственности

Компания предоставляет описание судна или яхты добросовестно, но не может гарантировать точность этой информации, а также не ручается за техническое состояние. Покупатель должен проинструктировать своих агентов или оценщиков исследовать представленную информацию более подробно, по собственному желанию. Продажа судна или яхты, изменение цены или снятие с продажи будет происходить без предварительного уведомления.

ФОТОГРАФИИ

Sistership Salon & Galley



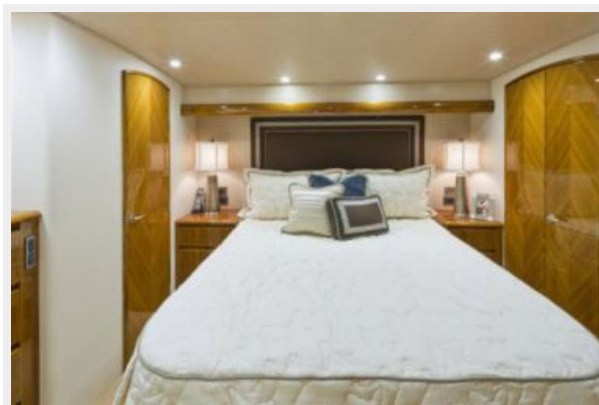
Sistership galley



Sistership dinette



Sistership master stateroom



Sistership master stateroom



Sistership head



Sistership stateroom



Sistership head



Sistership head



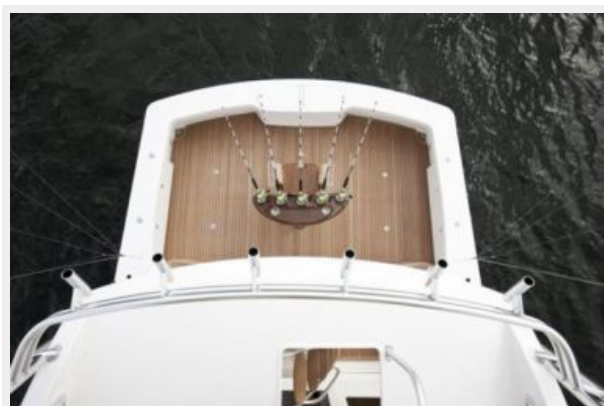
Sistership stateroom



Sistership head



Sistership cockpit



Sistership helm



Sistership livewells



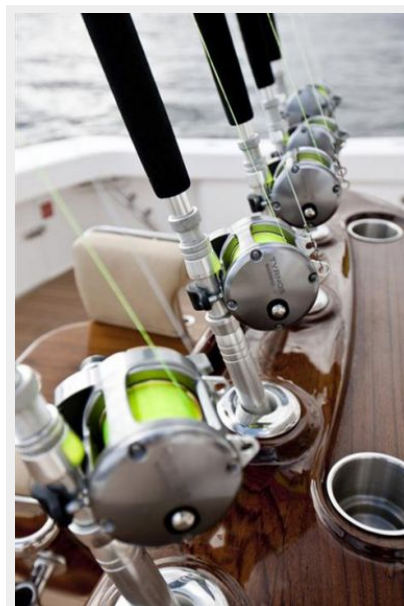
Sistership cockpit



Sistership cockpit



Sistership rod holders



Sistership cockpit



Sistership cockpit



Sistership flybridge



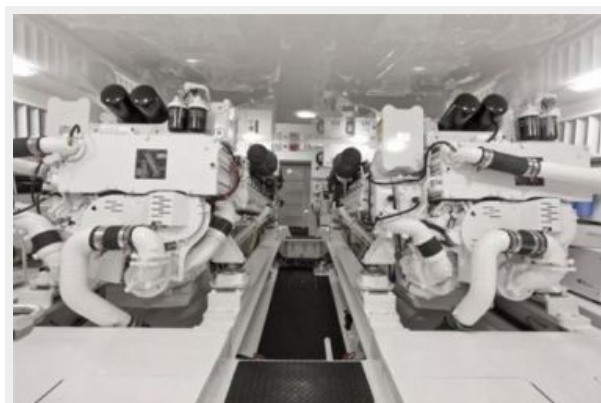
Sistership helm



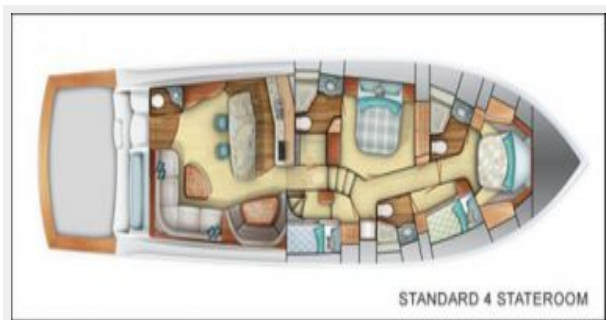
Sistership engine room



Sistership engine room



Standard 4 stateroom layout



Open bridge layout



Sistership running profile



КОНТАКТЫ

Андрей Шестаков (Andrey Shestakov) – ведущий яхтенный брокер отдела продаж яхт и судов компании Shestakov Yacht Sales Inc. Официальный представитель Shestakov Yacht Sales Inc. для русскоговорящих клиентов в центральном офисе компании в Майами/Форт Лодердейл/Флорида/США.

Контактная информация

Email: andrey@shestakovyachtsales.com

Web: shestakovyachtsales.com

Телефоны

Краснодарский край: **+7(918)465-66-44**

США, Майами, Флорида: **+1(954)274-4435**

Время работы

Понедельник – Суббота: **9:00 - 21:00**
EDT

Воскресенье: **Закрето**

Адрес



Harbour Towne Marina, 850 NE 3rd St,
STE 213, Dania, FL 33004