

BARBIE DOLL — AQUARIUS



Builder: [AQUARIUS](#)

Year Built: 1990

Model: Motor Yacht

Price: PRICE ON APPLICATION

Location: United States

LOA: 45' 0" (13.72m)

Beam: 14' 10" (4.52m)

Min Draft: 3' 0" (0.91m)

Max Draft: 3' 6" (1.07m)

Cruise Speed: 17 Kts. (20 MPH)

Max Speed: 23 Kts. (26 MPH)

Our experienced yacht broker, Andrey Shestakov, will help you choose and buy a yacht that best suits your needs **Barbie Doll — AQUARIUS** from our catalogue. Presently, at Shestakov Yacht Sales Inc., we have a wide variety of yachts available on our sale's list. We also work in close contact with all the big yacht manufacturers from all over the world.

If you would like to buy a yacht **Barbie Doll — AQUARIUS** or would like help answering any questions concerning purchasing, selling or chartering a yacht, please call **+1(954)274-4435**

TABLE OF CONTENTS

TABLE OF CONTENTS	2
SPECIFICATIONS	4
Overview	4
Basic Information	4
Dimensions	4
Speed, Capacities and Weight	5
Accommodations	5
Hull and Deck Information	5
Engine Information	5
DETAILED INFORMATION	6
Overview	6
Fly Bridge	6
Aft Deck	6
Salon	7
Galley	7
Accommodations	7
Engine room / electrical	7
Exclusions	8
Disclaimer	8
PHOTOS	9
Dockside	9
Bow view	9
Stern view	9
FB helm	9
FB dinette	9
FB seating	9
FB, aft	10
FB helm	10

FB, GPS, sterio	10
FB, electronics	10
Aft deck	10
Aft deck, stbd	10
Aft deck, port	11
Main salon, entering	11
Main salon, fwd	11
Main salon, stbd	11
Main salon, port	11
Dinette	11
Galley	12
MSR	12
MSR, port	12
MSR, ensuite head	12
Fwd. guest SR	12
Fwd. head	12
Engine room	13
Fuel tanks	13
Side deck	13
Foredeck	13
Running gear	13
CONTACTS	14
Contact details	14
Telephones	14
Office hours	14
Address	14

SPECIFICATIONS

Overview

BARBIE DOLL is an aft cabin cruiser that is of excellent quality and Taiwan built. Until 7 years ago she was located on a freshwater lake in Canada, which reflects on her overall condition. She has a solid fiberglass hull, gorgeous teak interior, and equipped with CAT engines and an ONAN genset. Even though she only two cabins she will sleep eight persons if needed. Both her aft deck and the flybridge are fully enclosed; the flybridge with eisenglass curtains and the aft deck with solid vinyl panels, so that you can enjoy both locations with full air conditioning. Her teak interior will rival or exceed most of the boats on the market, and certainly one that you will enjoy. The owner does his own maintenance and keeps the boat in "ready -to-go" condition. It is a pleasure for me to represent this boat for the owner.

Basic Information

Category: Motor Yacht

Sub Category: Double Cabin

Model Year: 1990

Year Built: 1990

Country: United States

Coast Guard #: 995198

Vessel Top: Hardtop

Fly Bridge: Yes

Dimensions

LOA: 45' 0" (13.72m)

LWL: 41' 3" (12.57m)

Beam: 14' 10" (4.52m)

Min Draft: 3' 0" (0.91m)

Max Draft: 3' 6" (1.07m)

Clearance: 16' 6" (5.03m)

Speed, Capacities and Weight

Cruise Speed: 17 Kts. (20 MPH)

Cruise Speed RPM: 2200 Kts.

Max Speed: 23 Kts. (26 MPH)

Max Speed RPM: 2600 Kts.

Displacement: 30000 Pounds

Water Capacity: 200 Gallons

Holding Tank: 30 Gallons

Fuel Capacity: 400 Gallons

Accommodations

Total Cabins: 2

Total Berths: 4

Sleeps: 8

Total Heads: 2

Hull and Deck Information

Hull Material: Fiberglass

Deck Material: Fiberglass

Hull Configuration: Modified V-Hull

Hull Color: White

Engine Information

Engines: 2

Manufacturer: Caterpillar

Model: 3208-T

Engine Type: Inboard

Fuel Type: Diesel

DETAILED INFORMATION

Overview

BARBIE DOLL is a Taiwan built family cruiser that features two staterooms, yet will sleep eight persons if needed. She has a solid fiberglass hull, with good walkways forward or to the aft deck. Both the flybridge and the aft deck have fiberglass hardtops, which is a real extra. She is fully air conditioned by three Marine Air A/C units, so that all cabins below, as well as the flybridge and aft deck are climate controlled. She has carpeting on the flybridge, aft deck, salon, and staterooms, with a teak & holly sole in the galley area. You will find seating and dining areas in various parts of the boat, both on the flybridge and aft deck, as well as the salon and galley dinette. Access to the engine room is beneath the galley stairway, which accesses the front of the engine room. The teak interior is well done, and a feature that only a few of the better built Taiwan boats exhibited.

Fly Bridge

The flybridge will be the captains delight, as he sits in the new "Flexsteel" helm seat. The eisenglass enclosure curtains are new in 2013, so you can run with them up or down. There is air conditioning for the flybridge should you be docked and just want to enjoy the bridge area. There is seating on the bridge for half a dozen people, or if they prefer they can find seats on the aft deck. Equipment at the helm include: + Raymarine C120 GPS chartplotter/radar + GOOD electric windlass control + Sony stereo/CD player + Ritchie compass + Bennett trim tabs & indicators + Standard Horizon digital depth + Standard Titan VHF + Standard Horizon LH5 hailer + Datamarine depth, knot, log, temp + Power search light control + Intercom system to MSR and engine room

Aft Deck

Upon boarding the boat you will find excellent railings going to the foredeck and bow pulpit on both port and starboard sides of the vessel. From the side decks you enter the aft deck area via solid, vinyl, side doors. The aft deck is carpeted, air conditioned, with solid vinyl enclosures across the entire stern of the deck. There are sliding windows on both sides of the deck should you prefer opening them. Midships are the stairs to the flybridge and to starboard is a doorway with the stairs that lead into the salon. There is a fiberglass hardtop over the aft deck, so there will be no leaks. The following features on the aft deck are: + Kenmore Elite refrigerator + U-line ice maker + Samsung 32" flat screen TV + Twin bench seats + Direct TV antenna + Stern gates for access to the swim platform with its swim ladder

Salon

The teak interior is just excellent, with a wonderful warm ambiance. There is an L-shaped sofa to port with a solid teak Hi-Lo table. To starboard is a large flat sofa, the can be moved across to the L-shaped sofa to create a full sized bed. Also on the starboard side of the salon is the main electrical panel so it is easily accessible. There is storage beneath both of the sofas. There are blinds on both side windows, and a textilene windshield cover that allows you to look out, but reduces sunlight from entering the interior. Forward to port is the entertainment center with a Toshiba 22" TV and a Sony CD player. The forward part of the salon is open to view both the galley and large teak dinette table with it's seating for six. Just a comfortable place to relax !!!

Galley

The galley has a teak & holly sole that extends beneath the dinette as well. Access to the engine room is via a bulkhead door, located under the stairs coming down from the salon. The teak dinette table will seat 6-7 persons, and truly makes another comfortable, socializing spot. The dinette table can be lowered so that it will make another double berth, if needed. There are opening ports on both sides of the galley area to allow for a cross breeze. The galley is well laid out with plenty of storage area, and is equipped with the following: + Princess 3 burner electric range top and oven + Double bowl S/S sink + Emerson 1000 watt microwave + Magic Chef refrigerator with freezer compartment

Accommodations

Forward of the galley/dinette area is a guest stateroom with a raised queen berth, that has drawers beneath. This stateroom has three large hanging closets, and a screened overhead hatch to the foredeck. The head can be accessed from either the stateroom or from companionway coming from the galley area. The shower is unique in its layout as it not a separate stall shower per se. Functional, but will take some getting used to. From the rear of the main salon you go three stairs to the master stateroom which features a centerline queen bed, again with drawers located beneath the bed. There are dressers on both sides of the bed with numerous drawers in the dressers. Accenting this stateroom is the teak & holly sole, as in the galley area. The ensuite head has a separate stall shower that compliments this head. In the starboard front corner of the stateroom is a very large hanging closet that you will truly enjoy.

Engine room / electrical

The engine room is accessed only from the bulkhead door located beneath the stairs to the galley. Aft in the engine room is the Onan 8.0 marine genset with 2240 hrs on it. The fiberglass fuel tanks are outboard of the engines, with sight gauges easily seen as you enter the engine room. Equipment includes: + Electric hot water heater + Racor fuel filters for both engines & genset + Oil change transfer system + Firebuoy halon extinguisher (auto/manual) + Mastervolt 3

bank charger (9/2014) + Three sets of 4D batteries (new 9/2014) + Set of spare
props + Nylon rode anchor line on Goode windlass

Exclusions

Owner's personal belongings.

Disclaimer

The Company offers the details of this vessel or yacht in good faith but cannot guarantee or warrant the accuracy of this information nor warrant the condition of the vessel. A buyer should instruct his representatives, agents, or his surveyors, to investigate such details as the buyer desires validated. This vessel or yacht is offered subject to prior sale, price change, or withdrawal without notice.

PHOTOS

Dockside



Bow view



Stern view



FB helm



FB dinette



FB seating



FB, aft



FB helm



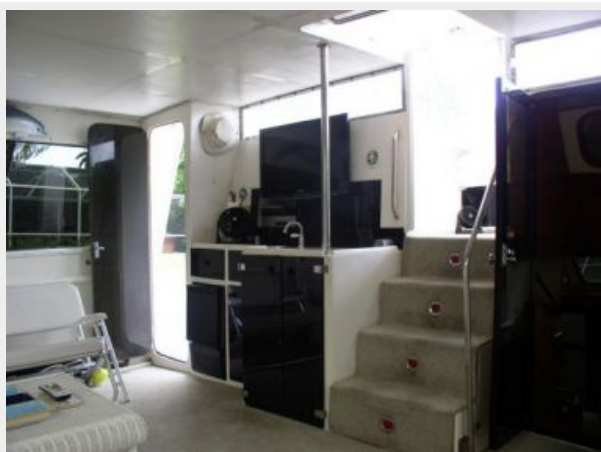
FB, GPS, stereo



FB, electronics



Aft deck



Aft deck, stbd



Aft deck, port



Main salon, entering



Main salon, fwd



Main salon, stbd



Main salon, port



Dinette



Galley



MSR



MSR, port



MSR, ensuite head



Fwd. guest SR



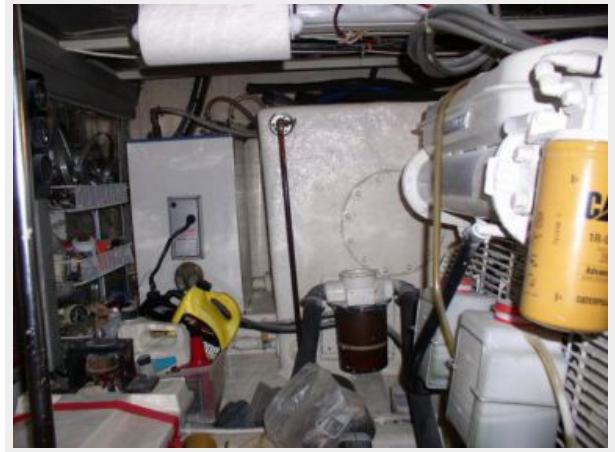
Fwd. head



Engine room



Fuel tanks



Side deck



Foredeck



Running gear



CONTACTS

Andrey Shestakov, leading yacht broker of the sales department of Shestakov Yacht Sales Inc. Shestakov Yacht Sales Inc., the official representative of the Miami/Fort Lauderdale FL headquarters.

Contact details

Email: andrey@shestakovyachtsales.com

Web: shestakovyachtsales.com/en/

Telephones

USA: +1(954)274-4435

Office hours

Monday – Saturday: **9:00 - 21:00** EDT

Sunday: **closed**

Address



Harbour Towne Marina, 850 NE 3rd St,
STE 213, Dania, FL 33004