

## NO NAME — CUSTOM LINE



**Builder:** CUSTOM LINE

**Year Built:** 2014

**Model:** Mega Yacht

**Price:** PRICE ON APPLICATION

**Location:** Venezuela

**LOA:** 100' 0" (30.48m)

**Beam:** 23' 9" (7.24m)

**Cruise Speed:** 24 Kts. (28 MPH)

**Max Speed:** 27 Kts. (31 MPH)

Our experienced yacht broker, Andrey Shestakov, will help you choose and buy a yacht that best suits your needs **NO NAME — CUSTOM LINE** from our catalogue. Presently, at Shestakov Yacht Sales Inc., we have a wide variety of yachts available on our sale's list. We also work in close contact with all the big yacht manufacturers from all over the world.

If you would like to buy a yacht **NO NAME — CUSTOM LINE** or would like help answering any questions concerning purchasing, selling or chartering a yacht, please call **+1(954)274-4435**

---

# TABLE OF CONTENTS

---

|                              |    |
|------------------------------|----|
| TABLE OF CONTENTS            | 2  |
| SPECIFICATIONS               | 3  |
| Basic Information            | 3  |
| Dimensions                   | 3  |
| Speed, Capacities and Weight | 3  |
| Accommodations               | 3  |
| Hull and Deck Information    | 3  |
| Engine Information           | 3  |
| DETAILED INFORMATION         | 4  |
| Standard Features            | 4  |
| Upgrades                     | 11 |
| Exclusions                   | 12 |
| Disclaimer                   | 12 |
| PHOTOS                       | 13 |
| CONTACTS                     | 25 |
| Contact details              | 25 |
| Telephones                   | 25 |
| Office hours                 | 25 |
| Address                      | 25 |

---

# SPECIFICATIONS

---

## Basic Information

---

**Category:** Mega Yacht

**Model Year:** 2014

**Year Built:** 2014

**Country:** Venezuela

## Dimensions

---

**LOA:** 100' 0" (30.48m)

**LWL:** 83' 11" (25.58m)

**Beam:** 23' 9" (7.24m)

## Speed, Capacities and Weight

---

**Cruise Speed:** 24 Kts. (28 MPH)

**Max Speed:** 27 Kts. (31 MPH)

**Water Capacity:** 793 Gallons

**Fuel Capacity:** 3884 Gallons

## Accommodations

---

**Total Cabins:** 5

**Total Heads:** 6

## Hull and Deck Information

---

**Hull Material:** Fiberglass

## Engine Information

---

**Engines:** 2

**Manufacturer:** MTU

**Model:** 16V 2000 M94

**Engine Type:** Inboard

**Fuel Type:** Diesel

---

# DETAILED INFORMATION

---

## Standard Features

---

### *INTERIORS*

|                               |                              |
|-------------------------------|------------------------------|
| <b>Leather sofas:</b>         | Yes                          |
| <b>Ladder to the fly:</b>     | Both from cockpit and inside |
| <b>Dinette in the bridge:</b> | Standard                     |
| <b>Cabins:</b>                | 5                            |
| <b>Crew cabins:</b>           | 3 Standard                   |
| <b>Master cabin position:</b> | Main deck                    |
| <b>2nd cabin:</b>             | Double                       |
| <b>3rd cabin:</b>             | Double                       |
| <b>4th cabin:</b>             | Twin beds                    |
| <b>5th cabin:</b>             | Twin beds                    |
| <b>Crew cabin position:</b>   | Bow                          |

---

|   |            |
|---|------------|
| <b>Crew cabin berths:</b>                   | 6          |
| <b>Optional crew cabin berths:</b>          | 0          |
| <b>Bathrooms:</b>                           | 6          |
| <b>Bathrooms in crew quarter:</b>           | 3          |
| <b>Optional bathrooms:</b>                  | 0          |
| <b>Safe deposit box:</b>                    | Three      |
| <b>Guests bathroom floor:</b>               | Fiberglass |
| <b>Adjustable helm seat in main bridge:</b> | Electric   |
| <b>Master bathroom floor:</b>               | Fiberglass |
| <b>Vip bathroom floor:</b>                  | Fiberglass |
| <b>Dinette in crew area:</b>                | Standard   |
| <b>Wide body master cabin (main deck):</b>  | Standard   |
| <b>Full beam master cabin:</b>              | 0          |

---

**Hydromassage bathtub in master cabin: 0****Captain cabin:** Bow**Daily bathrooms:** Standard***Exteriors*****Anchor total weight [lb]:** 617,4**Deck:** Teak**Cleats mid-ship:** Yes**Sunbathing cushions at bow:** Standard**Cockpit:** Teak**Cockpit table:** Teak**Cockpit chairs:** 5**Outside sink:** Cockpit + fly**Complete set of crockery, dishes and glasses:** Yes**Safety equipment:** 20

---

|                                    |                |
|------------------------------------|----------------|
| <b>Sun-covers or covers:</b>       | Standard       |
| <b>Tender with engine:</b>         | No             |
| <b>Sunbathing cushions on fly:</b> | Standard       |
| <b># of Anchors:</b>               | 2              |
| <b>Chains length [in]:</b>         | 1082 ft 8 in   |
| <b>Hull window:</b>                | Yes            |
| <b>Teak capping rail:</b>          | Optional       |
| <b>Bar on the fly:</b>             | Standard       |
| <b>Hard top:</b>                   | Glass hard top |

### *Equipment*

|  |      |
|--|------|
| <b>1st standard generator (Euro) [kw]:</b> | 40   |
| <b>2nd standard generator, power [kw]:</b> | 40   |
| <b>Anchor winch quantity:</b>              | 2    |
| <b>Anchor winch power (total) [w]:</b>     | 8000 |

---

|                                     |            |
|-------------------------------------|------------|
| <b>Mooring winch:</b>               | 2          |
| <b>Bow thruster Power [hp]:</b>     | 58         |
| <b>Trim tabs:</b>                   | Standard   |
| <b>Davit:</b>                       | On the fly |
| <b>Gangway:</b>                     | Telescopic |
| <b>Water bilge gauges:</b>          | Standard   |
| <b>Water bilge acoustic alarms:</b> | Standard   |
| <b>Water maker:</b>                 | 1          |
| <b>Ice maker:</b>                   | 2          |
| <b>TV antenna:</b>                  | Standard   |
| <b>TV number:</b>                   | 7          |
| <b>DVD:</b>                         | 7          |
| <b>Dishwasher:</b>                  | Yes        |



**Oven:** Electric + microwave

**Washing machine:** Optional

**Waste mincer:** Standard

**Garbage compactor:** Standard

**2nd standard generator:** Yes

**Mooring winch power [w]:** 5000

**Bow thruster:** Standard

**Capacity of the galley's fridge [gal]:** 133,1568

**Fridge in the crew quarter:** Yes

**Hi-fi system in the salon:** Bose surround system

**Hi-fi system in master cabin:** Bose surround system

**Freezer in crew quarters/utility room:** Yes

**Dryer machine:** Optional

**Hi-fi system in the guest cabins:** Stereo CD in all cabins

**Dual filters with by-pass:** Yes

**Stereo CD in main control station:** Standard

**Stereo CD in 2nd control station:** Standard

**Stern truster:** Optional

**Fridge in the galley:** Big size (side by side)

**Freezer in the galley:** Medium size

**Capacity of the freezer in the galley [gal]:** 25,8916

**Capacity of the fridge in the crew quarter [gal]:** 53,8968

**Freezer in crew quarters** Standard

**Capacity of the freezer in crew quarters [gal]:** 19,0224

### ***Electronics***

**Autopilot:** Standard

---

|  |                             |
|--|-----------------------------|
| <b>GPS:</b>                                      | Standard                    |
| <b>GPS plotter:</b>                              | Colour small size           |
| <b>VHF:</b>                                      | Yes                         |
| <b>VHF on the fly:</b>                           | Repeater                    |
| <b>Radar:</b>                                    | Standard                    |
| <b>Integrated management system:</b>             | MAN display data management |
| <b>Depth sounder:</b>                            | Tridata                     |
| <b>Control station in the cockpit:</b>           | Standard                    |
| <b>Telephone interface GSM/GPRS/FAX/PC DATA:</b> | Standard                    |
| <b>SSB:</b>                                      | yes                         |
| <b>CCTV (close circuit TV):</b>                  | Standard                    |

## Upgrades

---

Generator Kohler 50 kw diff from 40kw AUXIL. GENERATOR 50KW-50HZ DIFF. FROM STD  
 Pullman bed in guest cabin Watermaker Idromar 360 l/h diff. from standard 180 l/h (duplex) 9  
 Underwater lights Stabilizing fins TRAC 250 TV 46" LCD/LED thin CCTV: thermal night vision  
 FLIR Pan/Tilt M324XP Camera TVCC: additional control unit for night vision FLIR "Navigator"  
 Parquet custom flooring for main deck CUSTOM MADE COFFEE TABLE - DIFF Hydromassage  
 bath tub with constant temperature device on fly Wine cooler in main salon V11 KVH Vsat

Antenna TV 55" LCD/LED thin Chaise lounge on the fly bridge Boat name in stainless steel letters (backlit, each letter)

## Exclusions

---

Owner's personal belongings.

## Disclaimer

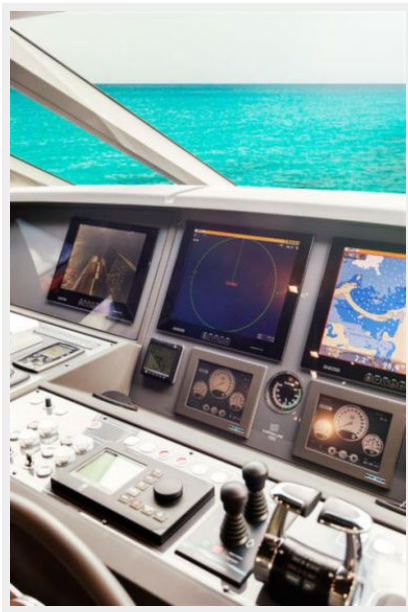
---

The Company offers the details of this vessel or yacht in good faith but cannot guarantee or warrant the accuracy of this information nor warrant the condition of the vessel. A buyer should instruct his representatives, agents, or his surveyors, to investigate such details as the buyer desires validated. This vessel or yacht is offered subject to prior sale, price change, or withdrawal without notice.

# PHOTOS

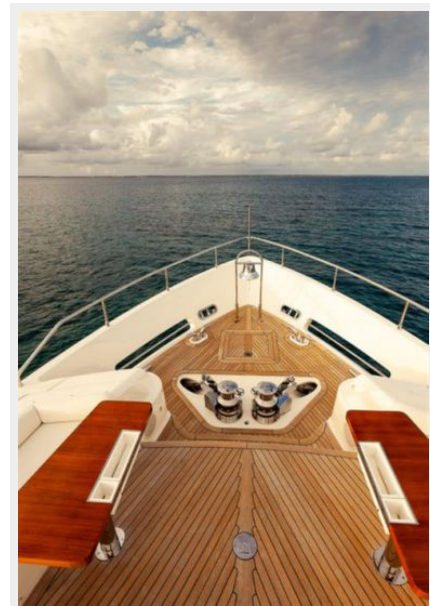




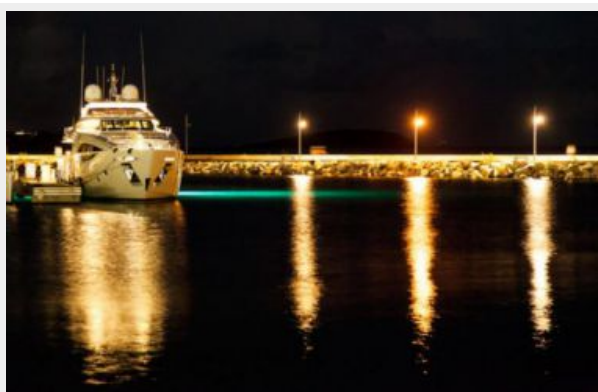
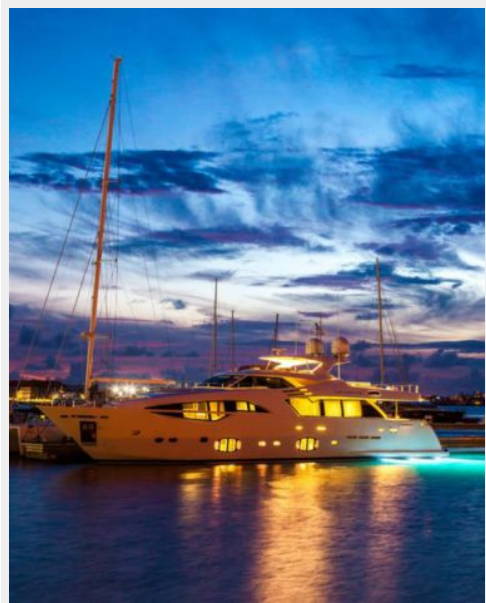


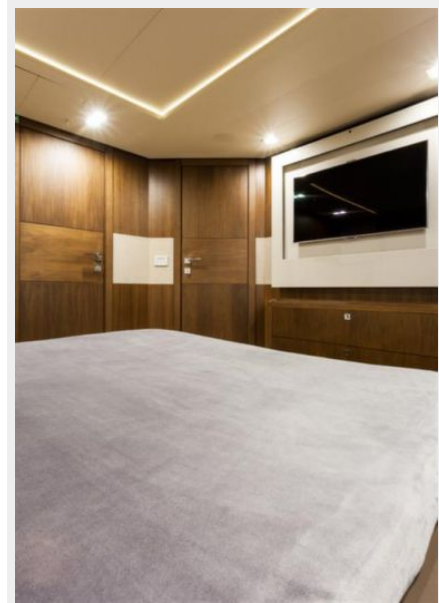


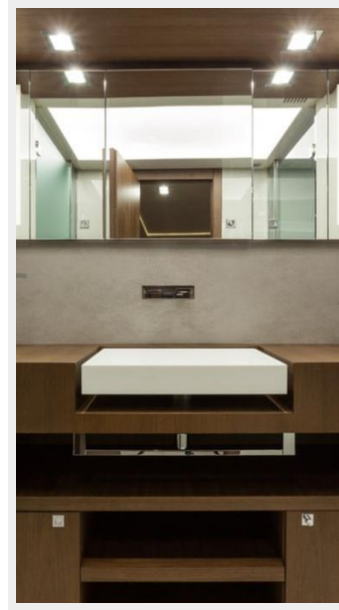




















---

# CONTACTS

---

Andrey Shestakov, leading yacht broker of the sales department of Shestakov Yacht Sales Inc. Shestakov Yacht Sales Inc., the official representative of the Miami/Fort Lauderdale FL headquarters.

---

## Contact details

---

Email: [andrey@shestakovyachtsales.com](mailto:andrey@shestakovyachtsales.com)

Web: [shestakovyachtsales.com/en/](http://shestakovyachtsales.com/en/)

---

## Telephones

---

USA: +1(954)274-4435

---

## Office hours

---

Monday – Saturday: **9:00 - 21:00** EDT

Sunday: **closed**

---

## Address

---



Harbour Towne Marina, 850 NE 3rd St,  
STE 213, Dania, FL 33004