

## MAXIME — RIVIERA



**Судостроитель:** RIVIERA

**Год постройки:** 2005

**Модель:** Катер для спортивной рыбалки

**Цена:** **ЦЕНА ЯХТЫ ПО ЗАПРОСУ**

**Местонахождение:** United States

**Длина общая:** 47' 0" (14.33m)

**Ширина:** 16' 8" (5.08m)

**Крейс. скорость:** 27 Kts. (31 MPH)

**Макс. скорость:** 30 Kts. (35 MPH)

Купить **MAXIME — RIVIERA** а также выбрать подходящую вам яхту из нашего каталога яхт вам поможет опытный яхтенный брокер Андрей Шестаков. На сегодняшний день компания **Shestakov Yacht Sales Inc.** имеет большое количество яхт в собственном списке продаж, а также тесно сотрудничает со всеми крупными яхтенными производителями по всему миру.

Для того чтобы купить яхту **MAXIME — RIVIERA** а также проконсультироваться по любому вопросу связанному с покупкой, продажей, чартером яхт позвоните по телефону **+7(918)465-66-44**.

# ОГЛАВЛЕНИЕ

ОГЛАВЛЕНИЕ	2
ХАРАКТЕРИСТИКИ	4
Основная информация	4
Размеры	4
Скорость, вместимость и масса	4
Размещение	4
Корпус и палуба	4
Информация о двигателе	5
ПОДРОБНОЕ ОПИСАНИЕ	6
Overview	6
General Specifications	6
Construction	6
Salon	6
Galley	7
Master Stateroom	7
Stateroom - Starboard	7
Stateroom - Port	8
Heads	8
Deck	8
Mechanical	9
Electrical	10
Audio & Visual	10
Cockpit	10
Fly Bridge	11
Исключения	12
Отказ от ответственности	12
ФОТОГРАФИИ	13
КОНТАКТЫ	17

---

Контактная информация	17
Телефоны	17
Время работы	17
Адрес	17

---

# ХАРАКТЕРИСТИКИ

## Основная информация

**Тип судна:** Катер для спортивной рыбалки

**Подкатегория:** Катер для спортивной рыбалки

**Модельный год:** 2005

**Год постройки:** 2005

**Страна:** United States

**Открытая палуба мостика:** Да

## Размеры

**Длина общая:** 47' 0" (14.33m)

**Ширина:** 16' 8" (5.08m)

## Скорость, вместимость и масса

**Крейс. скорость:** 27 Kts. (31 MPH)

**Макс. скорость:** 30 Kts. (35 MPH)

**Водоизмещение:** 43200 Pounds

**Вместимость воды:** 164 Gallons

**Вместимость сточного бака:** 40 Gallons

**Объем топливного бака:** 825 Gallons

## Размещение

**Всего кают:** 3

**Спальные места:** 6

**Всего ком. состава:** 2

## Корпус и палуба

**Материал корпуса:** Fiberglass

## Информация о двигателе

---

**Двигатели:** 2

**Производитель:** Caterpillar

**Модель:** C-12

**Тип двигателя:** Inboard

**Тип топлива:** Diesel

---

# ПОДРОБНОЕ ОПИСАНИЕ

---

## Overview

---

MAXIME has the following equipment installed: Bow thruster, Amtico flooring in Salon & Galley; extra fuel option (additional 225 gallons); Veem (5) blade props; Sea Tel Satellite; AC flybridge; davit & dinghy; spare props; new AC; windlass; (2) cockpit freezers; full sunshade; swim platform with ladder; full new flybridge enclosure; bridge freezer; cockpit table and chairs.

## General Specifications

---

- All stainless steel exterior fastenings 316 marine grade
- All stainless steel mirror finish with ground and polished welds
- Antifouling: 2 coats epoxy undercoat, 2 coats antifoul
- Fire extinguishers

## Construction

---

- Hand laid, moulded fibreglass hull, cored deck and flybridge
- Independent compartments throughout hull
- Isophthalic gelcoat exterior (white)
- Solid reinforced GRP keel, chines and hull bottom
- Vinylester resin in first outer layer of hull
- Watertight collision bulkhead forward

## Salon

---

- Air conditioning; reverse cycle, 24,000 BTU (split to galley) New
- Built in storage lockers to starboard with holders for glasses
- AMTICO Floor
- Central vacuum system with accessories
- Electronics console overhead in saloon
- Fridge/Icemaker Combo
- Handrail, stainless steel, recessed into headliner
- Head lining, vinyl with padding
- High quality Amtico flooring at saloon entry door
- Lighting, overhead (DC)
- Lounge - L shape in premium leather with storage/pull out bed underneath
- Rod storage in headliner electric open & close
- Safety indicator panel for monitoring bilge pumps, high water alarms, sump pump, navigational lights & engine room lights

---

## Galley

---

- Access hatch to storage under galley floor with auto lighting
- Exhaust fan
- Garbage bin
- Grab handle at the end of the galley divide
- High quality Amtico flooring
- Lighting, overhead (DC)
- Panasonic Microwave convection oven
- Overhead lockers
- Raised servery/divider to saloon in solid surface and decorative acrylic
- Recessed electric cooktop, dual element with cover and auto shutoff
- Refrigerator's and Freezers / 2 x 2 Drawer units, refrigerator below, freezer above 110V (U-Line)
- Single lever mixer tap to galley sink
- Solid surface benchtop with stainless steel sink and cover
- Storage cabinets & drawers below and above bench

---

## Master Stateroom

---

- Access to private ensuite with privacy lock
- Air conditioning: 10,000 BTU with reverse cycle, heat (split to ensuite) New
- Carpet with underlay
- Hanging lockers (x 2), cedar lined with auto lighting
- Hatch - square white with screen and blind
- Headboard - upholstered
- Hull and head linings, vinyl covered with padding
- Mirror over headboard, full width
- Private entrance door
- Provisions for entertainment system located in stb hanging locker- includes AC power & an aerial connection
- Queen walk around berth with innerspring mattress
- Reading and overhead lighting (DC)
- Storage cabinets outboard with positive locking hardware and gas support struts
- Storage under berth including drawers & gas struts for easy access
- Zenith TV

---

## Stateroom - Starboard

---

- Air conditioning: 12,000 BTU with reverse cycle, heat (split to stbd head) New
- Bedside table with drawers
- Built in 3 drawer unit aft
- Carpet with underlay

- Double berth with innerspring mattress
- Hanging locker with cedar lining and auto lighting (DC)
- Hatch - square white with screen and blind
- Headboard upholstered
- Private entrance door
- Reading and overhead lighting (DC)
- Storage cabinets outboard with positive locking hardware and gas support struts

---

## Stateroom - Port

---

- Air conditioning: 4,000 BTU with reverse cycle New
- Carpet with underlay
- Hatch - square white with screen and blind
- Private entrance door
- Reading and overhead lighting (DC)
- Storage cabinets outboard with positive locking hardware and gas support struts
- Storage cupboard with drawers and shelf
- Upper & lower berths (foam mattresses) with storage under lower berth
- Washing Machine/Dryer combination

---

## Heads

---

- Air conditioning with reverse cycle, heat. (Split from cabins) New
- Entrance to ensuite head from master stateroom
- Entrance to starboard head from stbd cabin and companionway
- Exhaust fan
- Hatch - square white with screen and blind
- High quality Amtico flooring (excluding shower)
- Holding tank level indicator
- Overhead and vanity lighting (DC)
- Shower stall with glass partition, frameless glass door, automatic sump pump and shower head
- Storage locker with shelf under vanity benchtop
- Toilet roll holder, towel holder and accessories
- Vacuflush toilet (fresh water)
- Vanity cabinet above sink with hinged, mirror doors
- Vanity with faucet, semi recessed porcelain sink into solid surface benchtop

---

## Deck

---

- Anchor 27kg (60lb), 70m (230ft) of 10mm (3/8") galvanized chain
- Anchor chain chafe plate fitted to bow sprit



- Anchor locker with rope/chain divider (offset to stbd). Access from hatches on deck
- Anchor safety strap
- Anchor winch vertical with overload protection circuit breaker, suit rope & chain, up & down foot switches & remote to helm
- Bow rail welded stainless steel (316 marine grade, highly polished) with mid safety wire including flag staff and burgee (bow flag)
- Bow roller stainless steel self-loading with secondary rope roller
- Cleats - stainless steel, 11" (x6), Bollards 12" (x2), pop-up (x2)
- Deck hatches x5 (lockable)
- Fender holders (x 4) to Bow Rail (not available with lower helm)
- Moulded non-skid gelcoat deck surfaces
- Rails port & starboard of flybridge above window for safe passage to forward deck
- Rub rail - impact and UV resistant PVC (white) with stainless steel insert strip
- Wash down tap (sea water) at anchor locker
- Novurania dinghy with 40hp Yamaha 4 stroke

## Mechanical

---

- Acoustic & thermal insulation
- New Air conditioning: 24,000 BTU, 16,000 BTU and 10,000 BTU condenser unit
- All through hull fittings on or below the water line fitted with ball valves, all hoses double clamped
- Bilge pumps, auto & manual override x 3
- Bow thruster 8HP with controls to helm/s
- Emergency rudder locking pins
- Engine hatches insulated & removable
- Engine mounts - anti vibration
- Engine room access with ladder
- Engine room flowcoated white
- Engine room lighting AC and DC
- External & internal seawater strainers for main water intakes -engines, generator & air conditioning
- Fibreglass aqualift exhaust system for engines / underwater outlet and bypass
- Fibreglass aqualift exhaust system for generator
- Fire suppression system for engine room with automatic/manual controls
- Fresh water heater - AC & heat exchange
- Fresh water system (pressurised) with dual water tanks, total capacity 620 Litres (164 US gallons)\* (approx) with gauge in galley
- Fresh water tap & hose set in engine room
- Fuel lines all swaged
- Fuel shut-off valves with emergency remote to cockpit
- Fuel tank gauge at helm
- Fuel tank, GRP coated in fire retardant white, 2700 litres (712 US gallons) (approx) with sight

gauge

- Holding tank capacity 151 litres (40 US gallons)
- Hydraulic steering
- Oil change system to main engines and genset
- Propellers, nibral five blade (x2) with spare set
- Rudders – aluminium bronze (x2) with zinc anodes
- Shafts duplex stainless (x2) with dripless PSS seals
- Struts aluminium bronze
- Trim Tabs - electric
- Vacuflush sanitation system with switch at helm for overboard pump out and deck fitting for dockside pump out
- Venting dorade system for engine air intakes with mist eliminators

## Electrical

---

- Alternators - independent start bank and independent house bank
- Batteries (maintenance free) - Independent port & stbd start (total x 4), House (x2) and Genset start (x1)
- Battery banks individually isolated
- Battery chargers, automatic-70 AMP/12VDC and 20 AMP/24VDC
- Battery paralleling system for emergency engine starting
- Bonding system, to all metallic hull fittings under the water line with zinc anode including galvanic isolator
- Electrical control centre with back lighting AC/DC thermal/magnetic circuit breakers, voltmeters, amp meter
- Engine monitoring including instrumentation, alarms and hour meters
- Engine room lighting (AC) and (DC)
- Generator - Onan EQD 11 kw/50Hz (13.5kw/60Hz) with muffler, fresh water-cooled including sound shield, remote stop/start electronic, hour meter
- Navigation lights (international standard)
- Wiring coded, numbered & loomed

## Audio & Visual

---

- Flybridge - AM/FM Stereo CD player with 4 speakers to flybridge
- Master stateroom - (Forward) - AM/FM/CD player including 2 speakers
- Salon – TV, stereo & DVD

## Cockpit

---

- Access ladder to flybridge
- Cockpit floor reinforced with alloy plate for future game chair or table

- Cockpit hatches with heavy-duty stainless steel lock downs and gas struts for lazarette storage and bilge access
- Cool box portside, refrigerated, top loading with lid & gas strut
- Door to Saloon - tinted tempered glass
- Double action manual bilge pump for engine room
- Dual purpose box locker located starboard forward corner.
- Includes rubbish bin and 4 x PVC containers (bin and containers can not be used simultaneously)
- Engine room access (lockable)
- Fair leads (x 2) rear corners
- Grab rails to assist access to side decks
- GRP moulded locker doors to storage with integral toe kicks
- Hand held shower hot & cold (Fresh water)
- Large removable fishbox, pumpout facility and 2 hatches
- Lighting - flood lights, overhead and courtesy (DC)
- Self draining cockpit to the stern
- Sink with mixer tap (hot and cold), moulded into engine room access door
- Steps to side decks port & starboard
- Tackle locker fitted above cockpit cool box
- Transom door GRP opening outwards with lift up bridge
- Wash down tap (fresh water)
- Wash down tap (sea water)

## Fly Bridge

---

- AC receptacle weather proof under console
- Autopilot with gyrocompass
- Chain counter
- Compass, 4.75" with light
- Console aft, with comprehensive electronic engine instrumentation and vessel controls
- Courtesy Lights
- Dash cover (White)
- Depth sounder system
- Electronic engine control unit, twin lever gear & throttle
- Helm & companion chair fully adjustable (Pompanette Tournament) with footrests
- Helm chair covers x2 (white)
- Helm electronics with 12VDC feed, main circuit breaker protected
- Lockable hatch to flybridge
- Lounge seating forward
- Overhead and courtesy lights
- Rail portside of console at helm

- Rails on rear of flybridge including midrail
- Refrigerator (12V), flybridge port aft
- Safety monitoring panel for bilge pumps, sump pump,
- navigation lights, engine room lights and high water alarm
- Sink with drainboard and faucet (hot and cold), moulded into flybridge
- Steering wheel - Destroyer
- Storage lockers (GRP)
- Wrap around front windshield/deflector
- Clarion stereo with CD & VHF
- ICOM VHF
- Side power thruster
- Simrad autopilot
- Northstar GPS - plotter
- Northstar radar sounder
- Furuno RD30 depth

## Исключения

---

При продаже яхты исключаются личные вещи владельца.

## Отказ от ответственности

---

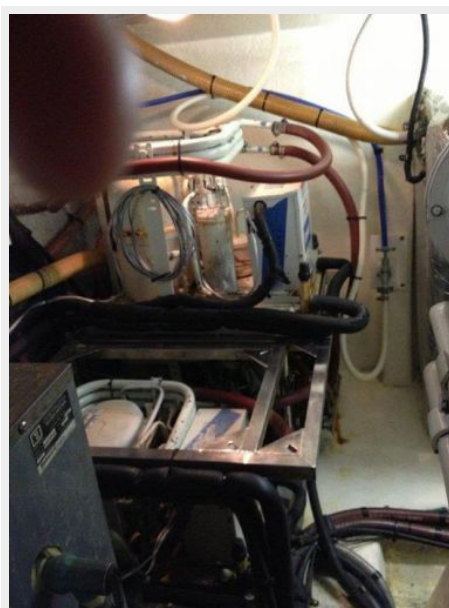
Компания предоставляет описание судна или яхты добросовестно, но не может гарантировать точность этой информации, а также не ручается за техническое состояние. Покупатель должен проинструктировать своих агентов или оценщиков исследовать представленную информацию более подробно, по собственному желанию. Продажа судна или яхты, изменение цены или снятие с продажи будет происходить без предварительного уведомления.

# ФОТОГРАФИИ















# КОНТАКТЫ

---

Андрей Шестаков (Andrey Shestakov) – ведущий яхтенный брокер отдела продаж яхт и судов компании Shestakov Yacht Sales Inc. Официальный представитель Shestakov Yacht Sales Inc. для русскоговорящих клиентов в центральном офисе компании в Майами/Форт Лодердейл/Флорида/США.

## Контактная информация

---

Email: [andrey@shestakovyachtsales.com](mailto:andrey@shestakovyachtsales.com)

Web: [shestakovyachtsales.com](http://shestakovyachtsales.com)

## Телефоны

---

Краснодарский край: **+7(918)465-66-44**

США, Майами, Флорида: **+1(954)274-4435**

## Время работы

---

Понедельник – Суббота: **9:00 - 21:00**  
EDT

Воскресенье: **Закрито**

## Адрес

---



Harbour Towne Marina, 850 NE 3rd St,  
STE 213, Dania, FL 33004