

## DACOTAH MAGIC — SEA RAY



**Судостроитель:** SEA RAY

**Год постройки:** 2000

**Модель:** Моторная яхта

**Цена:** **ЦЕНА ЯХТЫ ПО ЗАПРОСУ**

**Местонахождение:** United States

**Длина общая:** 40' 0" (12.19m)

**Ширина:** 14' 3" (4.34m)

**Мин. осадка:** 3' 4" (1.02m)

**Макс. осадка:** 3' 4" (1.02m)

Купить **Dacotah Magic — SEA RAY** а также выбрать подходящую вам яхту из нашего каталога яхт вам поможет опытный яхтенный брокер Андрей Шестаков. На сегодняшний день компания **Shestakov Yacht Sales Inc.** имеет большое количество яхт в собственном списке продаж, а также тесно сотрудничает со всеми крупными яхтенными производителями по всему миру.

Для того чтобы купить яхту **Dacotah Magic — SEA RAY** а также проконсультироваться по любому вопросу связанному с покупкой, продажей, чартером яхт позвоните по телефону **+7(918)465-66-44**.

# ОГЛАВЛЕНИЕ

ОГЛАВЛЕНИЕ	2
ХАРАКТЕРИСТИКИ	5
Обзор	5
Основная информация	6
Размеры	6
Скорость, вместимость и масса	6
Размещение	6
Корпус и палуба	6
Информация о двигателе	7
ПОДРОБНОЕ ОПИСАНИЕ	8
Vessel walk through	8
Salon	8
Dinette	8
Galley	9
Master Stateroom	9
Master Head	9
Guest Stateroom	9
Guest Head	10
Flybridge	10
Helm	10
Cockpit	11
Deck	11
Electrical System	11
Engine Room and Mechanical	11
Brokers Remarks	12
Disclaimer	12
Исключения	12
Отказ от ответственности	12

ФОТОГРАФИИ	13
Galley	13
Dinette	13
Salon Settee	13
Master Stateroom	13
Salon Settee & TV	13
Convertible Sofa	13
Convertible Sofa	14
Galley	14
Galley Sink & Stove covers	14
Galley Sink & Stove	14
Dinette Storage	14
Dinette Storage	14
Pantry	15
Staterooms Forward	15
Stereo & CD Changer	15
Master Stateroom	15
Master Stateroom	15
Master Stateroom	15
Master Head	16
Master Port Hanging Locker	16
Master Starboard Hanging Locker	16
Guest Stateroom	16
Guest Head & Shower	17
Helm	17
Helm	17
Helm	17
Helm Seat	17
Companion Seat	17

U-Shaped Settee & Table	18
Cockpit	18
Aft Bench Seat	18
Aft Curtain	18
Aft Curtain	18
Foredeck & Sunpad	18
Foredeck & Sunpad	19
Anchor & Windlass	19
Port Engine	19
Starboard Engine	19
Oil Change System - Dual Racors & Dripless Shaft Seals	19
Westerbeke 8KW Diesel Generator	19
Batteries & charger	20
Profile	20
Profile	20
Profile	20
Profile	20
<b>КОНТАКТЫ</b>	<b>21</b>
Контактная информация	21
Телефоны	21
Время работы	21
Адрес	21

---

# ХАРАКТЕРИСТИКИ

---

## Обзор

---

**Luxurious & Practical 2 Stateroom, 2 Head Layout**

**Beautiful Cherry Finish Interior**

**Lush Ultra leather Upholstery**

**Central Vacuum**

**Molded Steps to Flybridge**

**Fly Bridge Bimini with Full Enclosure**

**Cockpit Full Bench Seat**

**Transom Door**

**Swim Platform**

**Cockpit Aft Curtain**

**Foredeck Sun Pad**

**Furuno NAVNet GPS Plotter & Radar**

**Raymarine ST 6001 Autopilot**

**Twin Cummins 6CTA 8.3 430 HP Diesel 1275 Hrs.**

**Westerbeke 8.0 KW Diesel Generator 1260 Hrs.**

**Oil Change System**

**Spare Props**

## Основная информация

<b>Тип судна:</b> Моторная яхта	<b>Подкатегория:</b> Flybridge
<b>Модельный год:</b> 2001	<b>Год постройки:</b> 2000
<b>Страна:</b> United States	<b>Верх:</b> 2353
<b>Открытая палуба мостика:</b> Да	

## Размеры

<b>Длина общая:</b> 40' 0" (12.19m)	<b>Ширина:</b> 14' 3" (4.34m)
<b>Мин. осадка:</b> 3' 4" (1.02m)	<b>Макс. осадка:</b> 3' 4" (1.02m)

## Скорость, вместимость и масса

<b>Водоизмещение:</b> 22000 Pounds	<b>Вместимость воды:</b> 120 Gallons
<b>Вместимость сточного бака:</b> 28 Gallons	<b>Объем топливного бака:</b> 350 Gallons

## Размещение

<b>Всего кают:</b> 2	<b>Всего коек:</b> 4
<b>Спальные места:</b> 6	<b>Всего ком. состава:</b> 2

## Корпус и палуба

<b>Материал корпуса:</b> Fiberglass	<b>Материал палубы:</b> Fiberglass Sandwich
<b>Комплектация корпуса:</b> Modified Deep Vee	<b>Цвет корпуса:</b> White

## Информация о двигателе

---

**Двигатели:** 2

**Производитель:** Cummins

**Модель:** 6СТА 8.3

**Тип двигателя:** Inboard

**Тип топлива:** Diesel

---

# ПОДРОБНОЕ ОПИСАНИЕ

---

## Vessel walk through

---

The sliding glass door leads from the generous cockpit and swim platform to the spacious salon. Cherry wood finish and Buff Ultraleather upholstery offer a warm and welcoming interior. The condition is excellent throughout. This boat will not disappoint!

The single salon settee to starboard has storage under and to port the settee converts to a double berth with the push of a button. The raised dinette and large windows provide a great view and a bright airy feeling. The galley is very well appointed and neat as a pin!

The guest stateroom forward to port has twin beds with innerspring mattresses, a filler that convert to a king size bed and a cedar lined hanging locker. Next forward to port is the guest head with separate shower. Forward is the master stateroom with full size pedestal bed with innerspring mattress, (2) cedar lined hanging lockers, and an ensuite head with separate shower.

Molded steps lead to the flybridge which offers a forward helm excellent visibility, a U-shaped settee with table which converts to a sun pad, and a bimini with a full enclosure.

Stainless steel bow rails to the cockpit, sufficient side decks, and convenient hand rails offer easy access to the foredeck and sun pad.

## Salon

---

Cherry finish and Buff Ultraleather upholstery throughout provide a warm and inviting interior. It is very clean and in excellent condition. This boat will not disappoint!

- Single Settee to Starboard with storage under
- Settee to port converts to double bed electrically
- 26" LG Flat Screen TV
- Clarion XMD1 AM/FM/CD Stereo
- Clarion DC 625 6 Disc Changer
- SMX II A/C Control
- Central Vacuum

## Dinette

---

- Raised Dinette



- Stainless Steel Handrail
- Excellent View through Large Windows
- Opposing Seating with Storage Below
- Table with Drop Leaf

---

## Galley

---

The functional galley has plenty of storage.

- Kenyon 3 Burner Cook Top
- Grill 2 Convection Microwave Oven
- Large Norcold AC/DC Refrigerator with Freezer
- Black & Decker Space Maker Coffee Maker
- Storage Under Sole in Galley
- Pantry

---

## Master Stateroom

---

The master is forward with ensuite head and separate shower.

- Pedestal Bed with Innerspring Mattress
- Storage Lockers
- (2) Cedar Lined Hanging Lockers
- (2) Mirrors
- Central Vacuum
- (4) Stainless Steel Port Lights
- Opening Deck Hatch w/Screen/Shade
- 21" Samsung Flat Screen TV
- SMX II A/C Control

---

## Master Head

---

- Privacy Door from Master Stateroom
- Ensuite Head w/Separate Shower
- Vacuflush Head
- Exhaust Vent
- Vanity w/ Medicine Mirrored Cabinet

---

## Guest Stateroom

---

- Twin Beds with Innerspring Mattresses

- Filler for King Size Bed
- Cedar Lined Hanging Locker
- (2) Mirrors
- Stainless Steel Opening Port
- SMX II A/C Control

---

## Guest Head

---

- Privacy Door from Hallway
- Head w/Separate Shower
- Vacuflush Head
- Exhaust Vent
- Vanity w/ Medicine Mirrored Cabinet

---

## Flybridge

---

The flybridge is easily accessible by molded fiberglass stairs from the cockpit. The helm is forward for excellent visibility.

- Molded Fiberglass Stairs
- Matching Helm & Mate Seats w/Leaning Post Option
- U-Shaped Settee (New Upholstery 11/2014) with Table that Converts to Sun Pad
- Security Door with Hydraulic Assist and Latch
- Radar Arch
- Bimini and Full Enclosure

---

## Helm

---

- Furuno NAVnet C-map NT GPS Plotter
- Furuno Radar
- Raymarine ST6001 Auto Pilot
- Raymarine ST60+ Tridata Depth Sounder
- Raytheon Ray220 VHF
- ACR Spot Light Control
- Bennett Trim Tabs
- Sea Ray Systems Monitor
- Sea Fire Automatic Fire System
- Ritchie Compass
- Clarion Stereo Control

---

## Cockpit

---

- Ice Maker
- Full Cockpit Bench Seat (New Upholstery 11/2014)
- Molded Fiberglass Steps to Flybridge
- Convenient Hand Rails
- Transom Door
- Swim Platform
- Hot & Cold Cockpit Shower
- Transom Storage
- (2) Rod Holders
- Engine Room Access (Additional full access gas shock assist hinged salon floor)
- Cockpit Aft Curtain
- Sliding Glass Doors to the Salon

---

## Deck

---

Stainless steel bow rails to the cockpit, sufficient side decks, and convenient hand rails offer easy access to the foredeck and sun pad.

- Foredeck Sun Pad
- Stainless Steel Bow Rail
- Anchor Davit
- Windlass
- Anchor

---

## Electrical System

---

- AC & DC Panels Located in Salon
- Westerbeke 8.0 KW Diesel Generator w/1257 Hrs
- (2) 30 AMP 110v Shore Cords
- ProMariner Protech-4 Battery Charger
- (2) Battery Banks
- TV/Phone Inlet w/ Cord
- TV Antenna
- Water & Waste Tank Level Indicator

---

## Engine Room and Mechanical

---

The engine room is clean and well maintained. Detailed service records can be provided. Oil changed annually.

- Twin Cummins 6CTA 8.3 430HP Diesel Engines w/1280 Hrs.
- Fresh Water Cooling
- Raw Water Strainers
- Underwater Exhaust
- Dual Racor Fuel Filter for Main Engines
- Single Racor Fuel Filter for Generator
- Dripless Shaft Seals
- Reverso Oil Change System
- Sea Fire Automatic Fire System
- Spare Props
- (3) Automatic Bilge Pumps
- Holding Tank w/Macerator Pump Out

---

## Brokers Remarks

---

The 40 Sea Ray Sedan Bridge offers one of the best values in boating today. You can enjoy the comfort of the newer models at a fraction of the cost. The 2 stateroom 2 head layout will never be out dated. The performance and reliability of the Cummins 6CTA diesel engines make them the favorites of many knowledgeable boaters and mechanics alike. Dacotah Magic has been well loved by her knowledgeable and meticulous owners who now want to move up to larger boat. She shows very well and will not disappoint you!

---

## Disclaimer

---

The Company offers the details of this vessel in good faith but cannot guarantee or warrant the accuracy of this information nor warrant the condition of the vessel. A buyer should instruct his agents, or his surveyors, to investigate such details as the buyer desires validated. This vessel is offered subject to prior sale, price change, or withdrawal without notice.

---

## Исключения

---

При продаже яхты исключаются личные вещи владельца.

---

## Отказ от ответственности

---

Компания предоставляет описание судна или яхты добросовестно, но не может гарантировать точность этой информации, а также не ручается за техническое состояние. Покупатель должен проинструктировать своих агентов или оценщиков исследовать представленную информацию более подробно, по собственному желанию. Продажа судна или яхты, изменение цены или снятие с продажи будет происходить без предварительного уведомления.

# ФОТОГРАФИИ

**Galley**



**Dinette**



**Salon Settee**



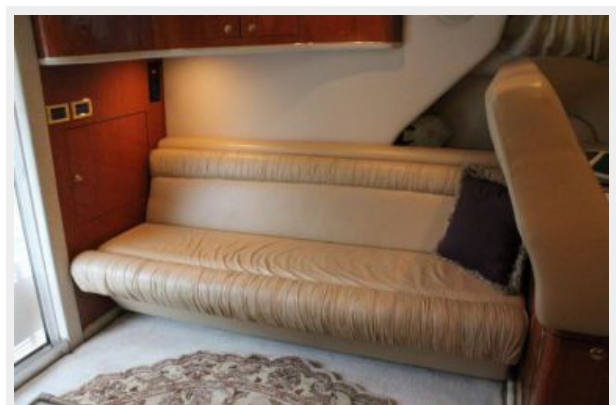
**Master Stateroom**



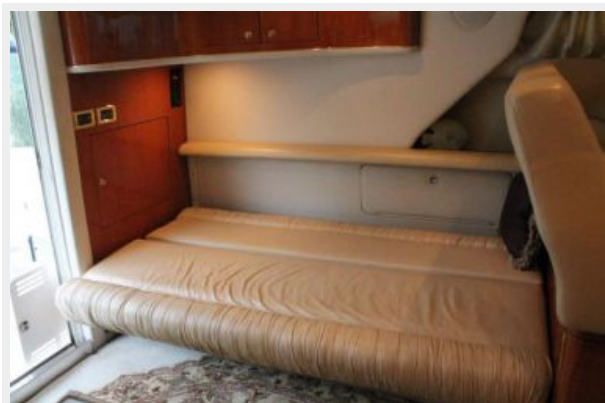
**Salon Settee & TV**



**Convertible Sofa**



**Convertible Sofa**



**Galley**



**Galley Sink & Stove covers**



**Galley Sink & Stove**



**Dinette Storage**



**Dinette Storage**





**Staterooms Forward**



**Pantry**



**Stereo & CD Changer**



**Master Stateroom**



**Master Stateroom**



**Master Stateroom**



**Master Head**



**Master Port Hanging Locker**



**Master Starboard Hanging Locker**



**Guest Stateroom**





### Guest Head & Shower



### Helm



### Helm



### Helm



### Helm Seat



### Companion Seat



**U-Shaped Settee & Table**



**Cockpit**



**Aft Bench Seat**



**Aft Curtain**



**Aft Curtain**



**Foredeck & Sunpad**





**Foredeck & Sunpad**



**Anchor & Windlass**



**Port Engine**



**Starboard Engine**



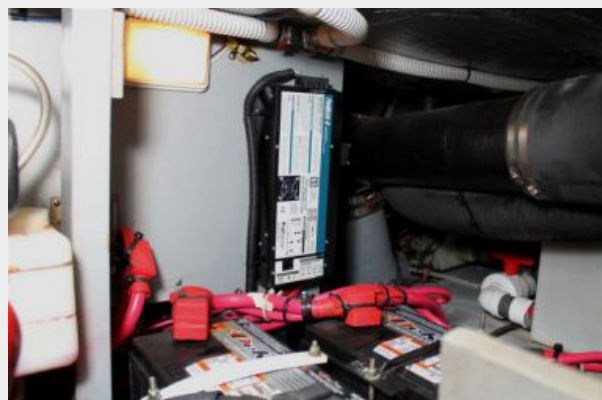
**Westerbeke 8KW Diesel Generator**



**Oil Change System - Dual Racors & Dripless Shaft Seals**



### Batteries & charger



### Profile



### Profile



### Profile



### Profile



# КОНТАКТЫ

---

Андрей Шестаков (Andrey Shestakov) – ведущий яхтенный брокер отдела продаж яхт и судов компании Shestakov Yacht Sales Inc. Официальный представитель Shestakov Yacht Sales Inc. для русскоговорящих клиентов в центральном офисе компании в Майами/Форт Лодердейл/Флорида/США.

## Контактная информация

---

Email: [andrey@shestakovyachtsales.com](mailto:andrey@shestakovyachtsales.com)

Web: [shestakovyachtsales.com](http://shestakovyachtsales.com)

## Телефоны

---

Краснодарский край: **+7(918)465-66-44**

США, Майами, Флорида: **+1(954)274-4435**

## Время работы

---

Понедельник – Суббота: **9:00 - 21:00**  
EDT

Воскресенье: **Закрето**

## Адрес

---



Harbour Towne Marina, 850 NE 3rd St,  
STE 213, Dania, FL 33004