

NEW VIKING 52 OPEN — VIKING



Builder: VIKING

Year Built: 2016

Model: Sport Fisherman

Price: PRICE ON APPLICATION

Location: United States

LOA: 52' 0" (15.85m)

Beam: 17' 6" (5.33m)

Max Draft: 4' 11" (1.50m)

Our experienced yacht broker, Andrey Shestakov, will help you choose and buy a yacht that best suits your needs **NEW Viking 52 Open — VIKING** from our catalogue. Presently, at Shestakov Yacht Sales Inc., we have a wide variety of yachts available on our sale's list. We also work in close contact with all the big yacht manufacturers from all over the world.

If you would like to buy a yacht **NEW Viking 52 Open — VIKING** or would like help answering any questions concerning purchasing, selling or chartering a yacht, please call **+1(954)274-4435**

TABLE OF CONTENTS

TABLE OF CONTENTS	2
SPECIFICATIONS	4
Overview	4
Basic Information	4
Dimensions	4
Speed, Capacities and Weight	4
Accommodations	4
Hull and Deck Information	5
Engine Information	5
DETAILED INFORMATION	6
Accommodations	6
Engine Options	6
Exclusions	6
Disclaimer	7
PHOTOS	8
Sistership - Galley	8
Sistership - Dinette/Galley	8
Sistership - Master Stateroom	8
Sistership - Helm	8
Sistership - Master Stateroom	8
Sistership - Galley	8
Sistership - Master Head	9
Sistership - Stateroom	9
Sistership - Stateroom	9
Sistership - Stateroom	9
Sistership - Head	10
Sistership - Stateroom/Head	10
Sistership - Washer/Dryer	10

Sistership - Bridge Seating	10
Sistership - Cockpit	11
Sistership - Cockpit	11
Sistership - Cockpit	11
Standard Layout	11
Sistership	12
Optional Layout	12
Sistership	12
Sistership	12
CONTACTS	13
Contact details	13
Telephones	13
Office hours	13
Address	13

SPECIFICATIONS

Overview

The 2016 52' Viking Open utilizing Viking's popular 52 Convertible hull form. The 52 Open takes its superb running surface and tournament proven cockpit and melds these enviable attributes with a stunning new topside layout and elegant interior. In addition, by designing a spectacular observation mezzanine in the 148 square foot cockpit, Viking has created an entirely new class of cruising and sportfishing yacht that will appeal to both experienced yachtsmen and hard-core blue-water tournament fishermen.

All photos are sistership manufacturer photos.

Basic Information

Category: Sport Fisherman

Sub Category: Open

Model Year: 2016

Year Built: 2016

Country: United States

Dimensions

LOA: 52' 0" (15.85m)

Beam: 17' 6" (5.33m)

Max Draft: 4' 11" (1.50m)

MFG Length: 53' 2" (16.21m)

Speed, Capacities and Weight

Displacement: 67000 Pounds

Water Capacity: 186 Gallons

Fuel Capacity: 1202 Gallons

Accommodations

Total Cabins: 2

Hull and Deck Information

Hull Material: Fiberglass

Engine Information

Engines: 2

Manufacturer: MAN

Model: V10 1100CRM 1100 MHP

Engine Type: Inboard

Fuel Type: Diesel

DETAILED INFORMATION

Accommodations

The two-stateroom, two-head layout showcases Viking's relentless attention to detail. The master stateroom is forward and features a queen-size walk-around berth, a maple-lined hanging locker, a 20-inch flat screen television, air conditioning, plenty of stowage and an en-suite private head with fiberglass stall shower. The portside guest stateroom provides upper and lower berths and access to the other head.

In the salon, fishing rods stow securely beneath the L-shaped lounge. A home theater system with a Sharp Aquos flat screen television, DVD/VCR and FM stereo with surround sound sets the mood. The starboard galley is fully equipped with an Amtico vinyl floor, a Corian countertop, electric cooktop, microwave/convection oven, under-counter refrigeration, in-sink garbage disposal and numerous stowage compartments for utensils, cookware and supplies.

Topside, the bridge deck has three Murray Products pedestal seats providing excellent visibility and comfort. Power assisted hydraulic steering and electronic engine controls are standard and a Moritz safety monitoring system confirms correct system operations. Electronics stow out of the weather but always in full view behind clear acrylic panels and a recessed radio box houses additional communication equipment.

The observation mezzanine in the cockpit features a port aft facing lounge with stowage below, a large bait freezer, tackle drawers and engine room access. There is gaff and tag stick stowage, dockside water connections and raw-water washdown outlets forward of the gunwales. An insulated chill box is built into the bridge deck step.

The self-bailing cockpit features a molded non-slip fiberglass sole, walk-through transom door, flush rod holders, rounded coaming and a recessed, insulated fishbox with pump out. NOTE: All photos are sistership photos.

Engine Options

- MAN / V10 1100CRM 1100 MHP - Base
- MAN / V8 1200CRM 1200 MHP - Option
- MAN / V12 1400CRM 1400 MHP - Option
- MAN / V12 1550CRM 1550 MHP - Option
- CAT / C18 1150 MHP - Option

Exclusions

Owner's personal belongings.

Disclaimer

The Company offers the details of this vessel or yacht in good faith but cannot guarantee or warrant the accuracy of this information nor warrant the condition of the vessel. A buyer should instruct his representatives, agents, or his surveyors, to investigate such details as the buyer desires validated. This vessel or yacht is offered subject to prior sale, price change, or withdrawal without notice.

PHOTOS

Sistership - Galley



Sistership - Dinette/Galley



Sistership - Master Stateroom



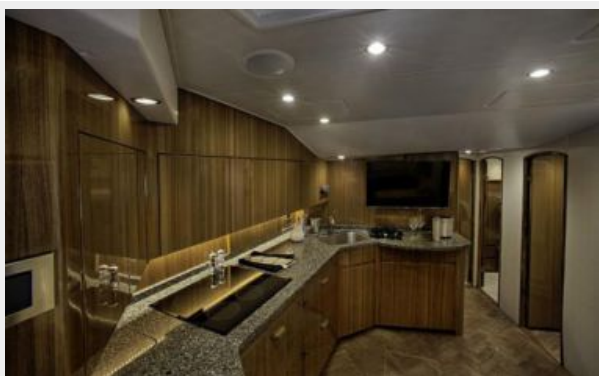
Sistership - Helm



Sistership - Master Stateroom



Sistership - Galley



Sistership - Master Head



Sistership - Stateroom



Sistership - Stateroom



Sistership - Stateroom



Sistership - Stateroom/Head



Sistership - Head



Sistership - Washer/Dryer



Sistership - Bridge Seating



Sistership - Cockpit



Sistership - Cockpit



Sistership - Cockpit



Standard Layout



Optional Layout



Sistership



Sistership



Sistership



CONTACTS

Andrey Shestakov, leading yacht broker of the sales department of Shestakov Yacht Sales Inc. Shestakov Yacht Sales Inc., the official representative of the Miami/Fort Lauderdale FL headquarters.

Contact details

Email: andrey@shestakovyachtsales.com

Web: shestakovyachtsales.com/en/

Telephones

USA: +1(954)274-4435

Office hours

Monday – Saturday: **9:00 - 21:00** EDT

Sunday: **closed**

Address



Harbour Towne Marina, 850 NE 3rd St,
STE 213, Dania, FL 33004