

## COMMON CENTS III — SEA RAY



**Судостроитель:** SEA RAY

**Год постройки:** 2005

**Модель:** Моторная яхта

**Цена:** ЦЕНА ЯХТЫ ПО ЗАПРОСУ

**Местонахождение:** United States

**Длина общая:** 55' 0" (16.76m)

**Ширина:** 16' 0" (4.88m)

**Макс. осадка:** 4' 3" (1.30m)

**Крейс. скорость:** 26.06928726 Kts. (30 MPH)

**Макс. скорость:** 31.283144712 Kts. (36 MPH)

Купить **Common Cents III — SEA RAY** а также выбрать подходящую вам яхту из нашего каталога яхт вам поможет опытный яхтенный брокер Андрей Шестаков. На сегодняшний день компания **Shestakov Yacht Sales Inc.** имеет большое количество яхт в собственном списке продаж, а также тесно сотрудничает со всеми крупными яхтенными производителями по всему миру.

Для того чтобы купить яхту **Common Cents III — SEA RAY** а также проконсультироваться по любому вопросу связанному с покупкой, продажей, чартером яхт позвоните по телефону **+7(918)465-66-44**.

# ОГЛАВЛЕНИЕ

|                               |    |
|-------------------------------|----|
| ОГЛАВЛЕНИЕ                    | 2  |
| ХАРАКТЕРИСТИКИ                | 4  |
| Обзор                         | 4  |
| Основная информация           | 4  |
| Размеры                       | 4  |
| Скорость, вместимость и масса | 4  |
| Размещение                    | 4  |
| Корпус и палуба               | 4  |
| Информация о двигателе        | 5  |
| ПОДРОБНОЕ ОПИСАНИЕ            | 6  |
| VIP Stateroom                 | 6  |
| Guest Stateroom               | 6  |
| Master Stateroom              | 6  |
| Galley/Dinette                | 6  |
| Salon                         | 7  |
| Cockpit                       | 7  |
| Fly Bridge                    | 7  |
| Electronics                   | 8  |
| Engine Room                   | 8  |
| Electrical System             | 9  |
| Исключения                    | 10 |
| Отказ от ответственности      | 10 |
| ФОТОГРАФИИ                    | 11 |
| КОНТАКТЫ                      | 26 |
| Контактная информация         | 26 |
| Телефоны                      | 26 |
| Время работы                  | 26 |
| Адрес                         | 26 |



# ХАРАКТЕРИСТИКИ

## Обзор

Common Cents III is a beautiful 2005 Pewter hull Sea Ray 550/580 Sedan Bridge with twin MAN 900 hp diesels. She has been maintained with a open checkbook. Now on the market because the owner has decided to move up.

## Основная информация

Тип судна: Моторная яхта

Модельный год: 2005

Год постройки: 2005

Страна: United States

## Размеры

Длина общая: 55' 0" (16.76m)

Ширина: 16' 0" (4.88m)

Макс. осадка: 4' 3" (1.30m)

## Скорость, вместимость и масса

Крейс. скорость: 26.06928726 Kts. (30 MPH)

Макс. скорость: 31.283144712 Kts. (36 MPH)

Водоизмещение: 51500 Pounds

Вместимость воды: 150 Gallons

Вместимость сточного бака: 68 Gallons

Объем топливного бака: 700 Gallons

## Размещение

Всего кают: 2

Всего ком. состава: 2

## Корпус и палуба

Материал корпуса: Fiberglass

## Информация о двигателе

---

**Двигатели:** 2

**Производитель:** MAN

**Модель:** V8-900

**Тип двигателя:** Inboard

**Тип топлива:** Diesel

---

# ПОДРОБНОЕ ОПИСАНИЕ

---

## VIP Stateroom

---

All the way forward below is the VIP stateroom which features a centerline queen bunk. To starboard and aft of the bunk is an enclosed shower. The head is shared with the guest stateroom. There is a Toshiba TV/DVD combo in the stateroom. It features a maple line hanging locker and storage cabinet with drawers to port.

## Guest Stateroom

---

Aft and to starboard is the guest stateroom which features criss crossed over/under bunks. There's a hanging locker that is maple lined. The TV/DVD is a Toshiba. This stateroom houses the combination washer/dryer with an upper storage cabinet.

## Master Stateroom

---

The master stateroom is all the way aft under the raised galley dinette area above. She is a full beam stateroom with a queen athwartship bunk. The bunk has storage below with a gasassisted hatch.

There is a countertop, tempered glass bar door for privacy with full length beveled mirror. the hanging locker is maple lined with light. The stateroom also features, stereo system, acountimass, with jewel cube speakers, dresser with drawers and lift top vanity and a storage locker maple lined with adjustable shelves, 20" flatscreen TV LCD with DVD/CD/VCR with remote with coax outlet and gain control panel.

The master head and shower is ensuite. The floors in the head are hardwood and head itself is a large vacuflush. There is a vent system. The shower features a seat, shower wand and acrylic door. The Medicine cabinet is mirrored and the vanity has a solid surface countertop. the sink is stainless steel and features Grohe faucet.

## Galley/Dinette

---

Up the winding staircase to starboard is the galley area starboard and dinette to port. the galley features a Krups coffee maker, countertop solid surface with cutting board and sink with single lever faucet.

There is wood flooring throughout the area. To starboard is the freezer with icemaker, sub zero refrigerator under counter sub zero drawer, microwave convection oven, with stainless steel face. The stove is in the counter. It is a recessed two burner Kenyon. There is a slide out trash receptacle and a wine rack with custom storage.

The dinette is a wraparound with storage below. There table is a hi glossed wood surface with storage below. The material on the dinette is premium leather.

---

## Salon

---

Aft and down a step is the salon. The salon/dinette galley area all feature wood blinds. The salon has two port and starboard ultra leather HP sofas with accent pillows. To port and aft is the electrical panel. to starboard is the entertainment center featuring Bose lifestyle 35 surround sound system with DVD player (5) speakers and subwoofer. There is storage cabinet and a 30" flatscreen TV with DVD/CD remote coax outlet and gain control panel. All of the lighting is halogen 120/24 volt. Elliptical stainless steel handrails, satin nickel finish outlet and switch plates, central vacuum system, cherry and or dark cherry interior finishes.

---

## Cockpit

---

Aft through a large sliding door is the cockpit. The cockpit has a transom door, two folding chairs and a table. The engine service access has a gas assisted hatch. there are 12 volt plug outlets in the cockpit, and a bench seating arrangement along the back of the cockpit with a storage locker below. this is removable. There is indirect as well as overhead lighting side storage lockers and stainless steel hand rails. There are also boarding step both port an starboard. Though the transom door is the swim platform and hydraulic lift.

---

## Fly Bridge

---

### FLYBRIDGE

From the starboard side of the cockpit is the molded staircase to the flybridge. The flybridge features a large seating area aft, a helm and companion seat a the helm and additional seating in front of the helm. The hardtop is fiberglass, with overhead storage, grab rails, overhead lighting with electronic dimmer and red night lighting. Forward of the helm and to starboard is a U-line icemaker and Norcold refrigerator.

The steering wheel is wood accent. there is an AM/FM stereo with single CD and satellite ready with 6 disc CD changer, amplifier, subwoofer, and speaker (4 bridge, 2 cockpit) and digital bridge remote control Clarion. There's also a bridge table in fiberglass, wet bar with sink, removable trash receptacle and storage forward. The flybridge hardtop has a full enclosure and is fully air conditioned.

The bridge also features:

- Alarms for bilge, temperature to systems monitor
- Alarms for bilge high water
- Bow thruster

- Compass
- Emergency engine stop
- Emergency start system
- Air horn with accumulator tank
- Brushed metal instrument pane
- Instrumentation custom sea ray backlit with low glare blue night lighting and stainless steel bezels (includes engine sync, fuel (2) oil pressure (2) tachs with LCD hour meters, volt meters (2) water temperature (2).
- Electric shift and throttle controls
- Spotlight with dual halogen bulbs remote control ACR
- Hydraulic power assisted steering
- Tilt steering wheel wood accented
- Switch panel (back lit) brushed metal
- Switches illuminated weatherproof rockers and electric dimmer control

---

## Electronics

---

- Twin Ray Marine 120 GPS chart plotter radar with integrated 4KW open array (12.1" color LCD)
- Ray Marine smart auto pilot
- Ray Marine 240 VHF with remote speaker
- Ray Marine VHF
- Bow thruster control (Vetus)
- MAN CLC 6.3 engine monitors (2)
- ACR spotlight
- Sea Ray monitoring system

---

## Engine Room

---

The engine room is accessed from the cockpit through a gas-assisted hatch. In the engine room are the optional 900 hp common rail MANs. The engine room features (3) 24V automatic bilge pumps (2 bilge and 1 fwd cabin)

- There are two high water alarms (1 bilge and 1 fwd cabin)
- Engine drip Pumps
- Exhaust power pac/lift system mufflers and sound insulation
- Engine room fans



- Fire extinguisher
- Fire suppression system automatic dual with diesel shutdown override and manual pull.
- Flooring is fiberglass diamond plate
- Freshwater cooling
- Gel coated engine room
- 2" Insulation with vinyl barrier
- Light on cord reel
- 24V lighting
- Oil changer system for mains, gears and genset.
- Synchronizers
- Fresh water spigot and hose
- Fuel system has crossover for the genset with five Racor filters (2) for each engine and a single for the genset
- Freshwater washdown and dockside inlet with cockpit shower (hot and cold)
- 18 gallon hot water heater
- Water manifold system
- The cabin sump pump is 24V for shower and A/C condensate
- Central drain system
- Vacuflush heads
- Holding tank level indicator
- Dockside pump out and automatic cutoff at 68 gallons
- Macerator with seacock interlocks system
- Full bonding system with zinc hull plate
- Propeller shafts are 2 1/2" stainless aquamet 22
- Propellers are Nibral 4 blade
- Rudders are Manganese-Bronze with stainless steel post.
- Shaft logs are dripless with extra seal carrier kit
- Trim tabs are 24V hydraulic transom mounted with heavy duty dual ramps with pump.

## Electrical System

- Batteries (4) 8-D's with boxes and group 27 for Genset
- Battery charger/converter 120V/10 amp 12V
- Battery charger/converter 240 V/50 amp 24V
- Battery charger overcurrent protectin
- Battery equalizer 60 amp (2)
- Battery solenoid switches 12V (2) 24V (2)
- Cable TV inlet with cords
- Circuit break panel remote
- Panel DC main breaker
- Panel main distribution - AC housed in aluminum enclosure
- Panel main distribution - DC housed in aluminum enclosure
- GelDenning cablemaster shore power 50 amp 240V 60 cycle with 50' cord and wireless

remote

- Transformer ISO boost shore power Isolation 50 AMP/240V/60 cycle
- Wiring color coded and labeled with chafe protection
- Onan 17.0 KW Onan diesel with sound shield with remote start, muffler, freshwater cooling, fuel filter, seacock and seawater strainer
- A/C heating bridge: Zone controlled reverse cycle system 240V 24,000 BTU, A/C heating cabin.
- Zone controlled reverse cycle system 240V, 49,000 BTU

## Исключения

---

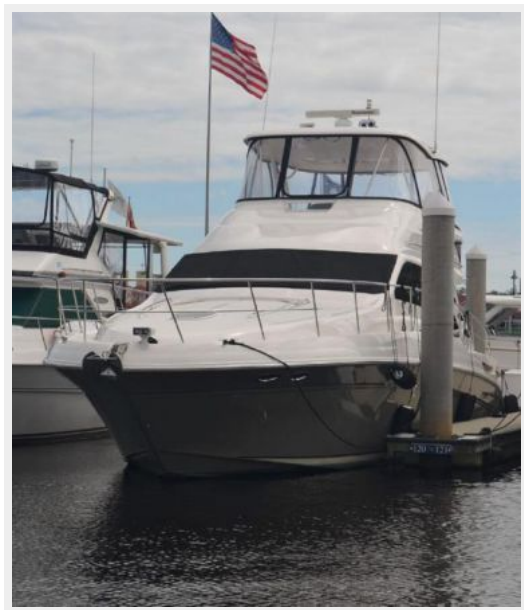
При продаже яхты исключаются личные вещи владельца.

## Отказ от ответственности

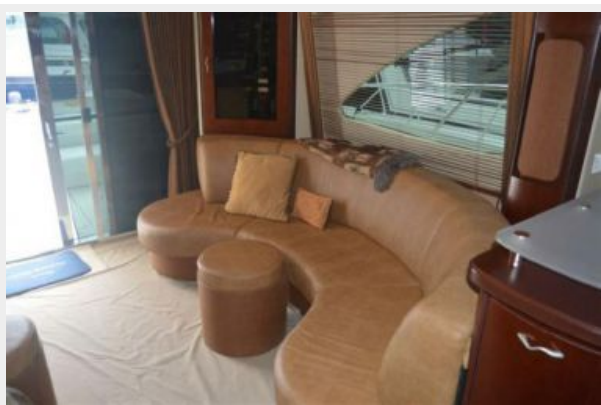
---

Компания предоставляет описание судна или яхты добросовестно, но не может гарантировать точность этой информации, а также не ручается за техническое состояние. Покупатель должен проинструктировать своих агентов или оценщиков исследовать представленную информацию более подробно, по собственному желанию. Продажа судна или яхты, изменение цены или снятие с продажи будет происходить без предварительного уведомления.

# ФОТОГРАФИИ

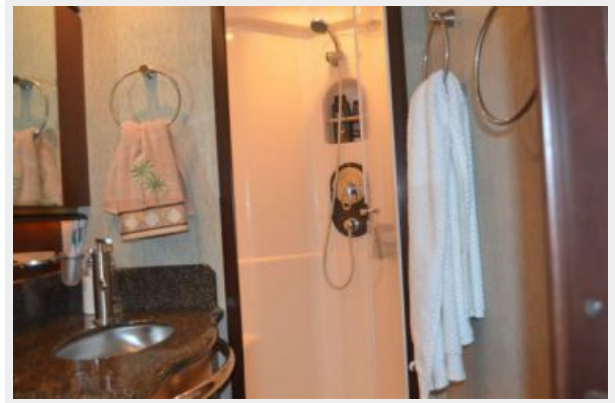
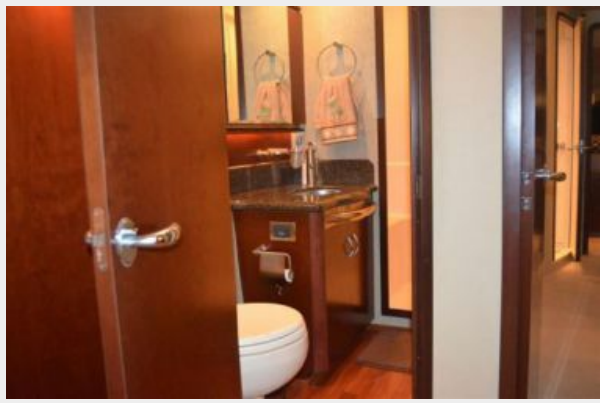




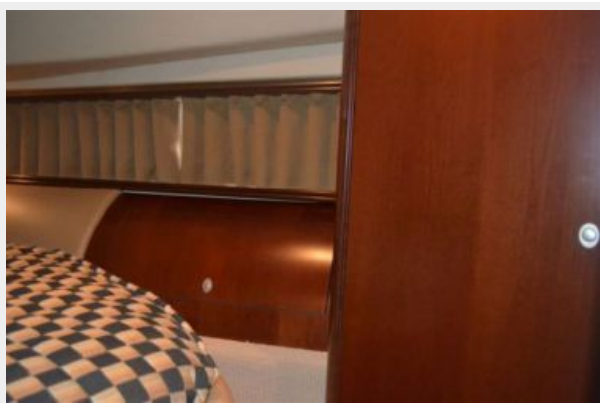


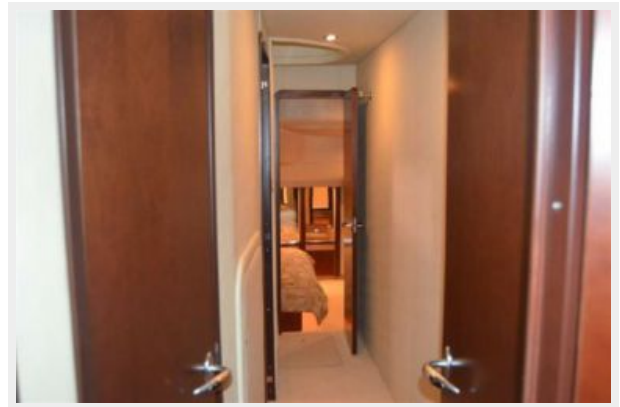










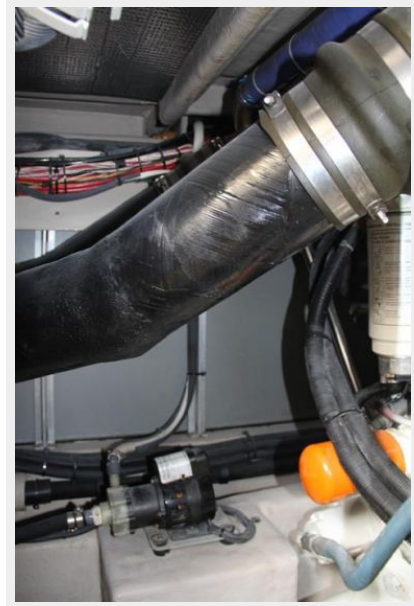


















# КОНТАКТЫ

---

Андрей Шестаков (Andrey Shestakov) – ведущий яхтенный брокер отдела продаж яхт и судов компании Shestakov Yacht Sales Inc. Официальный представитель Shestakov Yacht Sales Inc. для русскоговорящих клиентов в центральном офисе компании в Майами/Форт Лодердейл/Флорида/США.

## Контактная информация

---

Email: [andrey@shestakovyachtsales.com](mailto:andrey@shestakovyachtsales.com)

Web: [shestakovyachtsales.com](http://shestakovyachtsales.com)

## Телефоны

---

Краснодарский край: **+7(918)465-66-44**

США, Майами, Флорида: **+1(954)274-4435**

## Время работы

---

Понедельник – Суббота: **9:00 - 21:00**  
EDT

Воскресенье: **Закрито**

## Адрес

---



Harbour Towne Marina, 850 NE 3rd St,  
STE 213, Dania, FL 33004