

HUNTRESS — BERTRAM



Builder: BERTRAM

Year Built: 1987

Model: Sport Fisherman

Price: PRICE ON APPLICATION

Location: United States

LOA: 54' 0" (16.46m)

Beam: 16' 11" (5.16m)

Min Draft: 5' 2" (1.57m)

Cruise Speed: 24 Kts. (28 MPH)

Max Speed: 26 Kts. (30 MPH)

Our experienced yacht broker, Andrey Shestakov, will help you choose and buy a yacht that best suits your needs **HUNTRESS — BERTRAM** from our catalogue. Presently, at Shestakov Yacht Sales Inc., we have a wide variety of yachts available on our sale's list. We also work in close contact with all the big yacht manufacturers from all over the world.

If you would like to buy a yacht **HUNTRESS — BERTRAM** or would like help answering any questions concerning purchasing, selling or chartering a yacht, please call **+1(954)274-4435**

TABLE OF CONTENTS

TABLE OF CONTENTS	2
SPECIFICATIONS	5
Basic Information	5
Dimensions	5
Speed, Capacities and Weight	5
Accommodations	5
Hull and Deck Information	5
Engine Information	6
DETAILED INFORMATION	7
Salon	7
Electronics	7
Bow	7
Cockpit	7
Flybridge	8
Engine Room	8
Remarks	8
Exclusions	8
Exclusions	8
Disclaimer	8
PHOTOS	10
Salon Looking Aft	10
Salon Couch	10
Salon & Galley	10
Coffee Table	10
Couch	10
Salon	10
Starboard Salon Forward	11
Galley & Dinette	11

Galley	11
Galley Refrigerator & Freezer	11
Dinette	11
Companionway	11
3rd Stateroom	12
3rd Stateroom Head	12
Master Stateroom	12
Master Stateroom	12
Master Stateroom Head	13
Master Stateroom Hanging Locker	13
VIP Stateroom	13
VIP Stateroom	13
VIP Stateroom Additional Hanging Locker & Head Access	14
VIP Stateroom Hanging Locker	14
3 Helm Seats	14
Helm	14
Flybridge Electronics	14
Flybridge	14
Seating Forward	15
Bow	15
Bow	15
Cockpit	15
Aft Shot	15
Engine Room	15
Engine Room	16
Engine Room	16
Engine Room	16
Engine Room	16
Engine Room	16

Engine Room	16
CONTACTS	17
Contact details	17
Telephones	17
Office hours	17
Address	17

SPECIFICATIONS

Basic Information

Category: Sport Fisherman

Sub Category: Convertible

Model Year: 1987

Year Built: 1987

Country: United States

Vessel Top: Full / Tuna Tower

Fly Bridge: Yes

Cockpit: Yes

Dimensions

LOA: 54' 0" (16.46m)

Beam: 16' 11" (5.16m)

Min Draft: 5' 2" (1.57m)

Speed, Capacities and Weight

Cruise Speed: 24 Kts. (28 MPH)

Max Speed: 26 Kts. (30 MPH)

Displacement: 75400 Pounds

Water Capacity: 250 Gallons

Fuel Capacity: 1210 Gallons

Accommodations

Total Cabins: 3

Sleeps: 6

Total Heads: 3

Hull and Deck Information

Hull Material: Fiberglass

Hull Configuration: Modified V-Hull

Hull Designer: Bertram

Engine Information

Engines: 2

Manufacturer: Detroit Diesel

Model: BKX 1271 TI's

Engine Type: Inboard

Fuel Type: Diesel

DETAILED INFORMATION

Salon

L shaped couch to port with storage and rod storage within Dinette forward to starboard with storage under and Corian top Custom cut down Galley forward to port with Corian counters w/Sub Zero refrigerator & freezer below Large coffee table w/storage under & 2 stools around Garbage disposal 2 Sinks & Kitchen Aid 2 burner cook top Kitchenaid convection & microwave Instahot hot water at sink Icemaker in starboard aft corner of Salon Sony TV Pioneer amp w/Bose Surround Sound Philip Blue Ray Direct TV Wood mini blinds w/accent drapes High gloss cherry wood interior

Down 3 steps Starboard Stateroom with head & shower, hanging locker & drawer storage Forward to port is Owner Stateroom w/queen centerline bed, storage under also drawers under, 2 end tables w/storage, large hanging locker Head & stall shower

Bendex washer/dryer across to starboard Forward to VIP which has queen berth w/storage under with head & stall shower to starboard, abundant storage in this stateroom

Electronics

M3 KVH Satellite TV Garmin 4210 GPS plotter & radar, new 2014 Datamarine depth, speed & log Icom VHF M604, new 2014 Robertson autopilot AP 300X Furuno bottom machine FCV 561 Clarion stereo Synchronizer VHF in tower

Bow

Pipewelders davit, rebuilt 2014 Nautica 12' dinghy w/50 hp Yamaha 4 stroke Sea Safe life raft 8 man, new 2014 Windlass & pulpit

Cockpit

Forward to port is large tackle center housing freezer, drink cooler, sink w/tackle 5 drawers

Engine Room access under Salon door Live well starboard side of door

Spare props under Cockpit sole Head Hunter Mach 5 freshwater pump under sole New fiberglass deck installed 4 New fiberglass storage lockers under covering boards Retractable sunshade

Freshwater washdown Transom door with gate Swim platform 2 Stereo speakers 6 Rod holders Rupp Tripple spreader outriggers Center rigger

Flybridge

3 Pompanette helm chair L shaped seating of front of helm 3 Sided enclosures w/3 large U Zips
New cushions 6 Rod holders on aft rail Stereo speakers Chart holder Pipewelders tower 2
Quartz lights

Salon AC new in 2014 w/updated SMX 11 controls All canvas new in 2014 except sunshade

Engine Room

Detroit Diesel Key Power BKX 1271 TI's 900 HP, 1000 SMOH 2 Onan 15 KW generators
w/sound shield - 650 and 750 hours Oil change system 12, 32, 110, 220V 20 Gal. hot water
heater 2 32V chargers 12V charger Tides Dripless shaft logs w/spare seals Air compressor 110V
Air horns dual trumpet Crash pump engine driven Algae X Double racors on main engines
Racors on generators 220V AC pump 4 AC compressors Hynautic steering Bennett trim tabs
CO2 Fire system auto & manual 2 Blowers New PVC rub rails w/stainless steel Striker 30 Gallon
oil res.

Remarks

HUNTRESS has to be the cleanest 1987 54' Bertram that has been on the market recently. She
has been painted, rub rails replaced with PVC with stainless steel striker, interior redone with
cherry wood, Galley cut down with Corian countertops. She is owned by a very knowledgeable
yachtsman who has kept her in superb condition.

Exclusions

While every effort was made to list all pertinent included equipment aboard HUNTRESS, there
are some personal belongings aboard. Prospective purchasers should assume any item not
specifically mentioned herein will not convey at closing. Marlin in Galley, shell box on coffee
table, two stools in Salon.

Exclusions

Owner's personal belongings.

Disclaimer

The Company offers the details of this vessel or yacht in good faith but cannot guarantee or
warrant the accuracy of this information nor warrant the condition of the vessel. A buyer should
instruct his representatives, agents, or his surveyors, to investigate such details as the buyer

desires validated. This vessel or yacht is offered subject to prior sale, price change, or withdrawal without notice.

PHOTOS

Salon Looking Aft



Salon Couch



Salon & Galley



Coffee Table



Couch



Salon



Starboard Salon Forward**Galley & Dinette****Galley****Galley Refrigerator & Freezer****Dinette****Companionway**

3rd Stateroom**3rd Stateroom Head****Master Stateroom****Master Stateroom**

Master Stateroom Hanging Locker**Master Stateroom Head****VIP Stateroom****VIP Stateroom**

VIP Stateroom Hanging Locker**VIP Stateroom Additional Hanging Locker & Head Access****3 Helm Seats****Helm****Flybridge Electronics****Flybridge**

Seating Forward



Bow



Bow



Cockpit

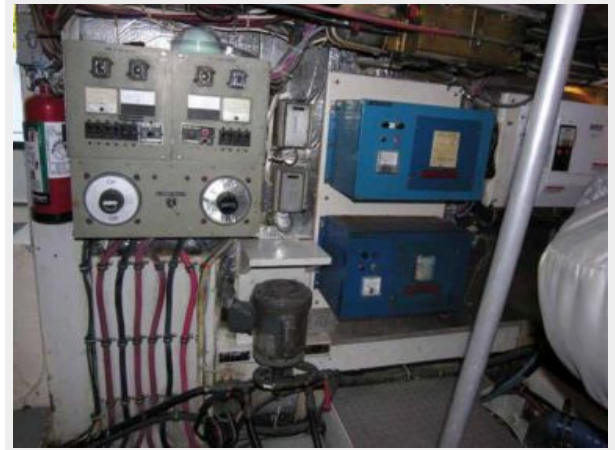


Aft Shot



Engine Room



Engine Room**Engine Room****Engine Room****Engine Room****Engine Room****Engine Room**

CONTACTS

Andrey Shestakov, leading yacht broker of the sales department of Shestakov Yacht Sales Inc. Shestakov Yacht Sales Inc., the official representative of the Miami/Fort Lauderdale FL headquarters.

Contact details

Email:
andrey@shestakovyachtsales.com

Web: shestakovyachtsales.com/en/

Telephones

USA: **+1(954)274-4435**

Office hours

Monday – Saturday: **9:00 - 21:00 EDT**

Sunday: **closed**

Address



Harbour Towne Marina, 850 NE 3rd St,
STE 213, Dania, FL 33004