

PRICE REDUCTION — BERTRAM



Builder: BERTRAM

Year Built: 1989

Model: Motor Yacht

Price: PRICE ON APPLICATION

Location: United States

LOA: 43' 0" (13.11m)

Beam: 14' 11" (4.55m)

Max Draft: 4' 2" (1.27m)

Our experienced yacht broker, Andrey Shestakov, will help you choose and buy a yacht that best suits your needs. **Price reduction — BERTRAM** from our catalogue. Presently, at Shestakov Yacht Sales Inc., we have a wide variety of yachts available on our sale's list. We also work in close contact with all the big yacht manufacturers from all over the world.

If you would like to buy a yacht **Price reduction — BERTRAM** or would like help answering any questions concerning purchasing, selling or chartering a yacht, please call **+1(954)274-4435**

TABLE OF CONTENTS

TABLE OF CONTENTS	2
SPECIFICATIONS	6
Overview	6
Basic Information	6
Dimensions	6
Speed, Capacities and Weight	6
Accommodations	7
Hull and Deck Information	7
Engine Information	7
DETAILED INFORMATION	8
Overview	8
Master Stateroom	8
Guest Stateroom	8
Salon	8
COCKPIT	8
Galley	8
Flybridge	9
Electronics	9
Electrical	9
Engine Room and Mechanical	9
Deck	9
Other Features	9
Exclusions	10
Disclaimer	10
PHOTOS	11
Stern	11
Stern	11
Stern	11

Bow	11
Port	11
Cockpit	11
Bow	12
Settee	12
Salon	12
Facing Aft	12
Salon	12
Galley	12
Salon	13
Galley	13
Galley	13
Facing aft	13
Head - Shower	13
Forward Berth	13
Head - Shower	14
Head - Shower	14
Berth	14
Berth	14
Berth	14
Facing Aft	14
Facing Forward	15
Bunks	15
Bunks	15
Cockpit	15
Facing Forward	15
Cockpit	15
Facing Forward	16
Seating	16

Facing Aft	16
Facing Aft	16
Helm	16
Helm	16
Helm	17
Helm	17
Helm	17
Facing Forward	17
Starboard Ladder	17
Port Cockpit	17
Rod Holders	18
Compartment	18
Compartment	18
Compartment	18
Compartment	18
Compartment	18
Main Engine	19
Main Engine	19
Main Engine Room	19
Main Engine	19
Main Engine	19
Main Engine	19
Compartment	20
Compartment	20
Compartment	20
Compartment	20
Compartment	20
Main Engine	20
Main Engine	21

Main Engine Room	21
Main Engine	21
Main Engine	21
Main Engine Room	21
CONTACTS	22
Contact details	22
Telephones	22
Office hours	22
Address	22

SPECIFICATIONS

Overview

In June **2012**, both **engines** were **overhauled** and numerous repairs and updating were done.

Invoices for the detail of work done totaling **\$115, 274.77** is available upon request.

Great fuel efficiencies since rebuild!

Bilges have been painted August 2013

300 Gallon Fuel Bladder

Avon 6 man life raft and epirb

Basic Information

Category: Motor Yacht

Sub Category: Flybridge

Model Year: 1989

Year Built: 1989

Country: United States

Dimensions

LOA: 43' 0" (13.11m)

Beam: 14' 11" (4.55m)

Max Draft: 4' 2" (1.27m)

Clearance: 13' 10" (4.22m)

MFG Length: 43' 4" (13.21m)

Speed, Capacities and Weight

Displacement: 40130 Pounds

Water Capacity: 160 Gallons

Holding Tank: 38 Gallons

Fuel Capacity: 567 Gallons

Accommodations

Total Berths: 6

Hull and Deck Information

Hull Material: Fiberglass

Engine Information

Engines: 2

Manufacturer: Detroit Diesel

Model: 6V92TA

Fuel Type: Diesel

DETAILED INFORMATION

Overview

2 staterooms, 1 head with separate stall shower, galley down and salon with “L” shaped sofa and dinette. Solid oak joinery with oak veneered bulkheads, new carpet, all nicely furnished showing no abuse. Interior is clean and shows no hard use.

Master Stateroom

Features large double center line bed with storage and drawers under, AC controls, closet, cabinets above bed, overhead hatch with screen, overhead and reading lights, privacy door and speakers with volume control.

Guest Stateroom

Features upper and lower bunks, closet, AC controls, reading lights, drawer and other storage and speakers with volume control.

Salon

Features “L” shaped settee that converts to bed on the starboard side. Aft “I” shaped settee on the forward port side with table, ice maker with bottle storage, blinds, main electrical panels, overhead and indirect lighting, speakers with volume control, entertainment electronics including Sony Receiver, 6-CD changer and control station for master, guest, salon, cockpit, and flying bridge. Swinging door to exit to cockpit. Concealed overhead rod storage locker.

COCKPIT

Fully equipped for big game fishing. Features a custom boarding ladder for the swimmer and diver. Freshwater and raw water wash down, 2 folding cockpit steps, in-transom fish box, above deck live well, cockpit freezer (stainless steel lined), bait prep center with freshwater and sink, Rupp 2X outriggers, Murray Bros Fighting chair with cover, transom door with gate and cockpit coaming pads.

Galley

Down on port side equipped with 2006 Galley Maid 2 burner electric stove top and power vent, 2011 refrigerator/freezer, 2006 stainless steel water heater, U-line ice maker, Quasar microwave/convection oven, hot and cold pressure water, sink, 110V receptacle with ground fault

interrupter, garbage disposal, drawers, cabinets, and shore water hook-up P&S.

Flybridge

Features custom helm and companion chairs, a helmsman's dodger, full instrumentation, controls, guest seating on bench forward of console, and storage beneath console.

Electronics

Northstar 6000i installed 4/05, includes 72 mi 12 kw radar, 1000 watt bottom machine, GPS/Plotter and 15" display. Icom IC-M127 VHF' standard Horizon Eclipse VHF; 2003 Simrad AP20 autopilot, Ritchie Power Damp compass; hailer.

Electrical

12VDC/120Vac, 240Vac systems; 30 amp and 50 amp shore power connections P&S; Four V8D-7 batteries; two battery chargers; 11.5 KW Westerbeke generator installed 05-15-09.

Engine Room and Mechanical

Hynautic hydraulic steering; 3-Cruisair air conditioning with SMX digital controls; Racor fuel filters, main engines and generator; Morse engine controls; drip less shaft logs; 3-Rule and 1-Par automatic/manual bilge pumps; Allison 1.5:1 transmissions; the original Kiddie halon 1301.2 automatic/manual fire suppression system (has been replaced 06/05/2012 with a new approved device); 120VAC and 12VDC water pumps; fiberglass fuel tanks; stainless steel water tanks; 38 gal polyethylene holding tank; household size royal flush toilet with "Y" valve; engine alarms; high water alarm; Bennett trim tabs; Walker Air Seps (changed 9/09); raw water strainers; oil changer system; strong seal drip-less stuffing boxes; galvanic isolator; electric fuel priming system; isolation transformer; Floscans-Diesel MFI "CB" NMEA Pulse kit installed 3/08; Engine synchronizers.

Deck

Factory hard top with helmsman dodger; bow pulpit with anchor roller & Galley Maid electric windlass; Delta 44# plow anchor with chain and line; custom aluminum bow rail and rail package; four boat bumpers with rail cage; Murray custom teak ladder; back helm chairs with canvas covers; ACR search light; horns.

Other Features

In June **2012**, the bottom was painted, both **engines** were **overhauled** and numerous repairs and updating were done. Invoices for detail of work done totaling **\$75, 274.77** available upon request.

Exclusions

Owner's personal belongings.

Disclaimer

The Company offers the details of this vessel or yacht in good faith but cannot guarantee or warrant the accuracy of this information nor warrant the condition of the vessel. A buyer should instruct his representatives, agents, or his surveyors, to investigate such details as the buyer desires validated. This vessel or yacht is offered subject to prior sale, price change, or withdrawal without notice.

PHOTOS

Stern



Stern



Stern



Bow



Port



Cockpit



Bow



Settee



Salon



Facing Aft



Salon



Galley



Salon



Galley



Galley



Facing aft



Head - Shower



Forward Berth



Head - Shower



Head - Shower



Berth



Berth



Berth



Facing Aft



Facing Forward



Bunks



Bunks



Cockpit



Facing Forward



Cockpit



Facing Forward



Seating



Facing Aft



Facing Aft



Helm



Helm



Helm



Helm



Helm



Facing Forward



Starboard Ladder



Port Cockpit



Rod Holders



Compartment



Compartment



Compartment



Compartment



Compartment



Main Engine



Main Engine



Main Engine Room



Main Engine



Main Engine



Main Engine



Compartment



Compartment



Compartment



Compartment



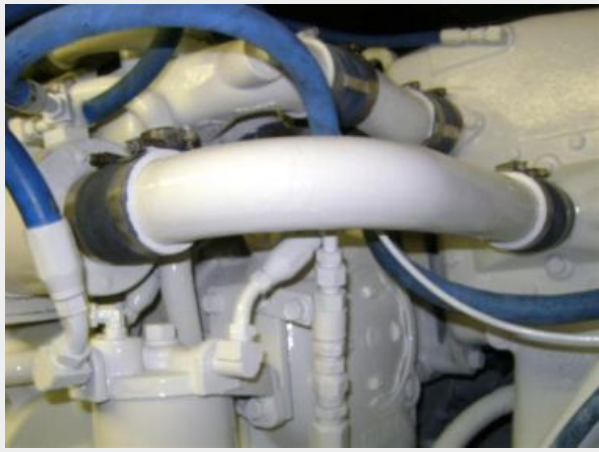
Compartment



Main Engine



Main Engine



Main Engine Room



Main Engine



Main Engine



Main Engine Room



CONTACTS

Andrey Shestakov, leading yacht broker of the sales department of Shestakov Yacht Sales Inc. Shestakov Yacht Sales Inc., the official representative of the Miami/Fort Lauderdale FL headquarters.

Contact details

Email: andrey@shestakovyachtsales.com

Web: shestakovyachtsales.com/en/

Telephones

USA: +1(954)274-4435

Office hours

Monday – Saturday: **9:00 - 21:00** EDT

Sunday: **closed**

Address



Harbour Towne Marina, 850 NE 3rd St,
STE 213, Dania, FL 33004