

## PRICE REDUCTION — BERTRAM



**Судостроитель:** BERTRAM

**Год постройки:** 1989

**Модель:** Моторная яхта

**Цена:** ЦЕНА ЯХТЫ ПО ЗАПРОСУ

**Местонахождение:** United States

**Длина общая:** 43' 0" (13.11m)

**Ширина:** 14' 11" (4.55m)

**Макс. осадка:** 4' 2" (1.27m)

Купить Price reduction — BERTRAM а также выбрать подходящую вам яхту из нашего каталога яхт вам поможет опытный яхтенный брокер Андрей Шестаков. На сегодняшний день компания Shestakov Yacht Sales Inc. имеет большое количество яхт в собственном списке продаж, а также тесно сотрудничает со всеми крупными яхтенными производителями по всему миру.

Для того чтобы купить яхту Price reduction — BERTRAM а также проконсультироваться по любому вопросу связанному с покупкой, продажей, чартером яхт позвоните по телефону **+7(918)465-66-44**.

# ОГЛАВЛЕНИЕ

ОГЛАВЛЕНИЕ	2
ХАРАКТЕРИСТИКИ	6
Обзор	6
Основная информация	6
Размеры	6
Скорость, вместимость и масса	6
Размещение	7
Корпус и палуба	7
Информация о двигателе	7
ПОДРОБНОЕ ОПИСАНИЕ	8
Overview	8
Master Stateroom	8
Guest Stateroom	8
Salon	8
СОСКОПИТ	8
Galley	8
Flybridge	9
Electronics	9
Electrical	9
Engine Room and Mechanical	9
Deck	9
Other Features	9
Исключения	10
Отказ от ответственности	10
ФОТОГРАФИИ	11
Stern	11
Stern	11
Stern	11

Bow	11
Port	11
Cockpit	11
Bow	12
Settee	12
Salon	12
Facing Aft	12
Salon	12
Galley	12
Salon	13
Galley	13
Galley	13
Facing aft	13
Head - Shower	13
Forward Berth	13
Head - Shower	14
Head - Shower	14
Berth	14
Berth	14
Berth	14
Facing Aft	14
Facing Forward	15
Bunks	15
Bunks	15
Cockpit	15
Facing Forward	15
Cockpit	15
Facing Forward	16
Seating	16

---

Facing Aft	16
Facing Aft	16
Helm	16
Helm	16
Helm	17
Helm	17
Helm	17
Facing Forward	17
Starboard Ladder	17
Port Cockpit	17
Rod Holders	18
Compartment	18
Compartment	18
Compartment	18
Compartment	18
Compartment	18
Main Engine	19
Main Engine	19
Main Engine Room	19
Main Engine	19
Main Engine	19
Main Engine	19
Compartment	20
Compartment	20
Compartment	20
Compartment	20
Compartment	20
Main Engine	20
Main Engine	21

---

---

Main Engine Room	21
Main Engine	21
Main Engine	21
Main Engine Room	21
КОНТАКТЫ	22
Контактная информация	22
Телефоны	22
Время работы	22
Адрес	22

---

# ХАРАКТЕРИСТИКИ

---

## Обзор

---

In June **2012**, both **engines** were **overhauled** and numerous repairs and updating were done.

Invoices for the detail of work done totaling **\$115, 274.77** is available upon request.

Great fuel efficiencies since rebuild!

Bilges have been painted August 2013

300 Gallon Fuel Bladder

Avon 6 man life raft and epirb

## Основная информация

---

**Тип судна:** Моторная яхта

**Подкатегория:** Flybridge

**Модельный год:** 1989

**Год постройки:** 1989

**Страна:** United States

## Размеры

---

**Длина общая:** 43' 0" (13.11m)

**Ширина:** 14' 11" (4.55m)

**Макс. осадка:** 4' 2" (1.27m)

**Трапы:** 13' 10" (4.22m)

**Длина привального бруса:** 43' 4"  
(13.21m)

## Скорость, вместимость и масса

---

**Водоизмещение:** 40130 Pounds

**Вместимость воды:** 160 Gallons

**Вместимость сточного бака:** 38 Gallons

**Объем топливного бака:** 567 Gallons

---

## Размещение

---

Всего коек: 6

## Корпус и палуба

---

Материал корпуса: Fiberglass

## Информация о двигателе

---

Двигатели: 2

Производитель: Detroit Diesel

Модель: 6V92TA

Тип топлива: Diesel

---

# ПОДРОБНОЕ ОПИСАНИЕ

---

## Overview

---

2 staterooms, 1 head with separate stall shower, galley down and salon with “L” shaped sofa and dinette. Solid oak joinery with oak veneered bulkheads, new carpet, all nicely furnished showing no abuse. Interior is clean and shows no hard use.

## Master Stateroom

---

Features large double center line bed with storage and drawers under, AC controls, closet, cabinets above bed, overhead hatch with screen, overhead and reading lights, privacy door and speakers with volume control.

## Guest Stateroom

---

Features upper and lower bunks, closet, AC controls, reading lights, drawer and other storage and speakers with volume control.

## Salon

---

Features “L” shaped settee that converts to bed on the starboard side. Aft “I” shaped settee on the forward port side with table, ice maker with bottle storage, blinds, main electrical panels, overhead and indirect lighting, speakers with volume control, entertainment electronics including Sony Receiver, 6-CD changer and control station for master, guest, salon, cockpit, and flying bridge. Swinging door to exit to cockpit. Concealed overhead rod storage locker.

## COCKPIT

---

Fully equipped for big game fishing. Features a custom boarding ladder for the swimmer and diver. Freshwater and raw water wash down, 2 folding cockpit steps, in-transom fish box, above deck live well, cockpit freezer (stainless steel lined), bait prep center with freshwater and sink, Rupp 2X outriggers, Murray Bros Fighting chair with cover, transom door with gate and cockpit coaming pads.

## Galley

---

Down on port side equipped with 2006 Galley Maid 2 burner electric stove top and power vent, 2011 refrigerator/freezer, 2006 stainless steel water heater, U-line ice maker, Quasar microwave/convection oven, hot and cold pressure water, sink, 110V receptacle with ground fault



interrupter, garbage disposal, drawers, cabinets, and shore water hook-up P&S.

---

## Flybridge

---

Features custom helm and companion chairs, a helmsman's dodger, full instrumentation, controls, guest seating on bench forward of console, and storage beneath console.

---

## Electronics

---

Northstar 6000i installed 4/05, includes 72 mi 12 kw radar, 1000 watt bottom machine, GPS/Plotter and 15" display. Icom IC-M127 VHF' standard Horizon Eclipse VHF; 2003 Simrad AP20 autopilot, Ritchie Power Damp compass; hailer.

---

## Electrical

---

12VDC/120Vac, 240Vac systems; 30 amp and 50 amp shore power connections P&S; Four V8D-7 batteries; two battery chargers; 11.5 KW Westerbeke generator installed 05-15-09.

---

## Engine Room and Mechanical

---

Hynautic hydraulic steering; 3-Cruisair air conditioning with SMX digital controls; Racor fuel filters, main engines and generator; Morse engine controls; drip less shaft logs; 3-Rule and 1-Par automatic/manual bilge pumps; Allison 1.5:1 transmissions; the original Kiddie halon 1301.2 automatic/manual fire suppression system (has been replaced 06/05/2012 with a new approved device); 120VAC and 12VDC water pumps; fiberglass fuel tanks; stainless steel water tanks; 38 gal polyethylene holding tank; household size royal flush toilet with "Y" valve; engine alarms; high water alarm; Bennett trim tabs; Walker Air Seps (changed 9/09); raw water strainers; oil changer system; strong seal drip-less stuffing boxes; galvanic isolator; electric fuel priming system; isolation transformer; Floscans-Diesel MFI "CB" NMEA Pulse kit installed 3/08; Engine synchronizers.

---

## Deck

---

Factory hard top with helmsman dodger; bow pulpit with anchor roller & Galley Maid electric windlass; Delta 44# plow anchor with chain and line; custom aluminum bow rail and rail package; four boat bumpers with rail cage; Murray custom teak ladder; back helm chairs with canvas covers; ACR search light; horns.

---

## Other Features

---

In June **2012**, the bottom was painted, both **engines** were **overhauled** and numerous repairs and updating were done. Invoices for detail of work done totaling **\$75, 274.77** available upon request.

## Исключения

---

При продаже яхты исключаются личные вещи владельца.

## Отказ от ответственности

---

Компания предоставляет описание судна или яхты добросовестно, но не может гарантировать точность этой информации, а также не ручается за техническое состояние. Покупатель должен проинструктировать своих агентов или оценщиков исследовать представленную информацию более подробно, по собственному желанию. Продажа судна или яхты, изменение цены или снятие с продажи будет происходить без предварительного уведомления.

# ФОТОГРАФИИ

Stern



Stern



Stern



Bow



Port



Cockpit



**Bow**



**Settee**



**Salon**



**Facing Aft**



**Salon**



**Galley**



Salon



Galley



Galley



Facing aft



Head - Shower



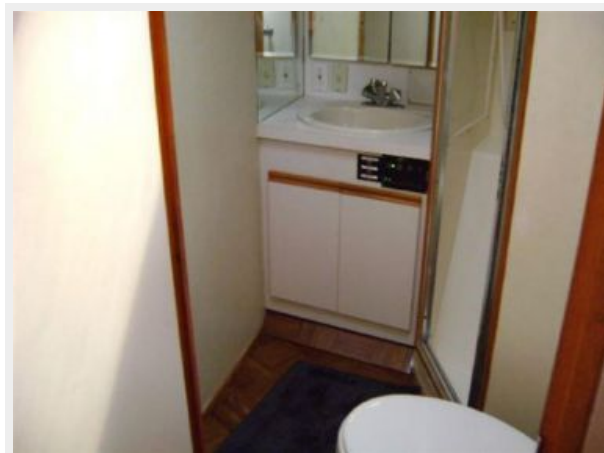
Forward Berth



Head - Shower



Head - Shower



Berth



Berth



Berth



Facing Aft



**Facing Forward**



**Bunks**



**Bunks**



**Cockpit**



**Facing Forward**



**Cockpit**



**Facing Forward**



**Seating**



**Facing Aft**



**Facing Aft**



**Helm**



**Helm**





Helm



Helm



Helm



Facing Forward



Starboard Ladder



Port Cockpit



**Rod Holders**



**Compartment**



**Compartment**



**Compartment**



**Compartment**



**Compartment**



**Main Engine**



**Main Engine**



**Main Engine Room**



**Main Engine**



**Main Engine**



**Main Engine**



Compartment



Compartment



Compartment



Compartment



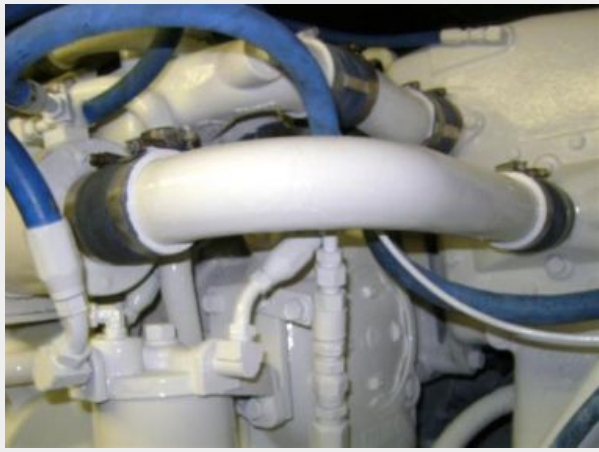
Compartment



Main Engine



**Main Engine**



**Main Engine Room**



**Main Engine**



**Main Engine**



**Main Engine Room**



# КОНТАКТЫ

---

Андрей Шестаков (Andrey Shestakov) – ведущий яхтенный брокер отдела продаж яхт и судов компании Shestakov Yacht Sales Inc. Официальный представитель Shestakov Yacht Sales Inc. для русскоговорящих клиентов в центральном офисе компании в Майами/Форт Лодердейл/Флорида/США.

## Контактная информация

---

Email: [andrey@shestakovyachtsales.com](mailto:andrey@shestakovyachtsales.com)

Web: [shestakovyachtsales.com](http://shestakovyachtsales.com)

## Телефоны

---

Краснодарский край: **+7(918)465-66-44**

США, Майами, Флорида: **+1(954)274-4435**

## Время работы

---

Понедельник – Суббота: **9:00 - 21:00**  
EDT

Воскресенье: **Закрыто**

## Адрес

---



Harbour Towne Marina, 850 NE 3rd St,  
STE 213, Dania, FL 33004