

92FT 1988 CHEOY LEE 92-CPMY — CHEOY LEE



Builder: CHEOY LEE

Year Built: 1988

Model: Motor Yacht

Price: PRICE ON APPLICATION

Location: United States

LOA: 92' 0" (28.04m)

Beam: 21' 0" (6.40m)

Max Draft: 5' 9" (1.75m)

Cruise Speed: 16 Kts. (18 MPH)

Max Speed: 21 Kts. (24 MPH)

Our experienced yacht broker, Andrey Shestakov, will help you choose and buy a yacht that best suits your needs 92ft 1988 Cheoy Lee 92-CPMY — CHEOY LEE from our catalogue. Presently, at Shestakov Yacht Sales Inc., we have a wide variety of yachts available on our sale's list. We also work in close contact with all the big yacht manufacturers from all over the world.

If you would like to buy a yacht 92ft 1988 Cheoy Lee 92-CPMY — CHEOY LEE or would like help answering any questions concerning purchasing, selling or chartering a yacht, please call +1(954)274-4435

TABLE OF CONTENTS

TABLE OF CONTENTS	2
SPECIFICATIONS	3
Basic Information	3
Dimensions	3
Speed, Capacities and Weight	3
Accommodations	3
Hull and Deck Information	3
Engine Information	4
DETAILED INFORMATION	5
DIMENSIONS	5
ACCOMODATIONS	5
Vessel walkthrough	6
Salon	7
Electrical	7
Electronics and Navigation	8
COCKPIT	8
UPGRADES - REFIT	9
CUSTOM FEATURES	10
EXCLUSIONS	10
Exclusions	10
Disclaimer	10
PHOTOS	11
CONTACTS	20
Contact details	20
Telephones	20
Office hours	20
Address	20

SPECIFICATIONS

Basic Information

Category: Motor Yacht

Sub Category: Flybridge

Model Year: 1988

Year Built: 1988

Country: United States

Dimensions

LOA: 92' 0" (28.04m)

Beam: 21' 0" (6.40m)

Max Draft: 5' 9" (1.75m)

Speed, Capacities and Weight

Cruise Speed: 16 Kts. (18 MPH)

Max Speed: 21 Kts. (24 MPH)

Fuel Capacity: 3300 Gallons

Accommodations

Total Cabins: 4

Total Berths: 4

Hull and Deck Information

Hull Material: Fiberglass

Engine Information

Engines: 2

Manufacturer: Detroit Diesel

Model: 12V71TI

Engine Type: Inboard

Fuel Type: Diesel

DETAILED INFORMATION

DIMENSIONS

Length 92 ft 28.1 meters

Beam 21 ft 6.4 meters

Draft 5 ft 9 in 1.75 meters

Fuel Tankage3300 gal12,492 liters

Cruise Speed..... 16. kts

Max Speed 21 kts

Engines: 2 x 850 HP Detroit 12V71TI (rebuilt)

Generators: (2) x 25kw Northern Lights

Naiad 302 Datum Stabilizers

Cabins: 4 Guest Staterooms (sleeps 8), 2 Crew cabins (sleeps 4)

ACCOMODATIONS

Custom built yacht.

Accommodations for 8 guests in 4 staterooms.

Separate crew accommodations for 4

. Elegant and spacious, the Main Salon has the feeling of a much larger vessel. Her areas are enhanced by custom designed glass panels, artist executed using unique medium carved, sandblasted and painted by award winning Sandcastle Studios. Mirrored Dining Salon - dining table, custom designed in Italy , accommodating 10-12 people.

Master Stateroom:

King Bed

En-suite his and hers heads - Tub shower and toilet to Port Vanity table aft

Mirrored closets and door to cockpit

Full Entertainment system

Cedar closets

2 Night Tables

Drawered and Shelved Cabinets additional storage areas

VIP Stateroom:

Queen Berth

Guest Stateroom : 2

Overlapping Single berths

En-suite head with shower/shared with 2nd room

Vanity tables

TV Entertainment

Cedar Closet

Crew Quarters:

Sleeps 4 in 2 Cabins

Dining area

Microwave and Sink

Refrigerator

TV,DVD/CD Entertainment

Common Head and Shower

Washer/Dryer

Entrance from Dining Salon

Vessel walkthrough

This Vessel was custom built by Cheoy Lee for the original owner in 1988. Her beautiful lines are reflected by her inviting and unusual use of space inside the vessel. Spacious and airy salon with bar, games table and desk/work area. Day head on port side of bar. Enclosed aft deck creates an inviting private area for conversation, quiet relaxation, open feel, yet totally protected

vantage point from which to enjoy the sea.

All cabins are below the main deck. Forward from main salon is the Pilothouse, divided from salon by Custom Designed Etched Glass Doors which may be used to achieve privacy when desired..

The Galley is forward and below port side with formal dining for ten (10 -12) to starboard on the main deck. Forward from dining are stairs down to crew quarters,

All four guest staterooms are accessed from stairs located in main salon.

Aft, the Master has separate stairs. Also a private entrance leading from the cockpit, enhancing owners use of cockpit, jacuzzi and deck, without entering any other part of the yacht.

The remaining three cabins are accessed from stairs located forward, port side of the salon.

Salon

Full bar forward with seating and TV

Day Head/powder room to port forward

Full Entertainment system with pop up TV

Dining Table for 4

Couches and cocktail table for 12

Aft private lounge area can be closed off from Salon

Entrance to Master to port

Aft Desk and work table middle to port

Electrical

(2) Northern lights generator 25kw (new 02)

(2) Isolation transformer

(2) 50-amp dockside electrical cable

(10) 24DC bilge pumps

240/120 vAC 24/12 vDC

Electronics and Navigation

Robertson AP9 autopilot

(2) Garmin 120 GPS's

Furuno 72 mile radar

Sea 322SSB radio

(3) ACR spot lights, forward and aft

Trimble Navigator

Lorance GPS 10x

Furuno SAT FSN70

Panasonic D308 PBX telephone/intercom

Built in cellphone PBX System

Computer/chart plotters w/Nav software charts

Direct TV Satellite receivers for guest & crew

ICOM DSC M127 VHF

Captains chairs

Raytheon hailer

Engine room monitor

Furuno weather fax

Furuno color fish finder/dept sounder

Data marine/depth,speed, wind

COCKPIT

Private Entrance to Master Strm

Jacuzzi

Hot and Cold Shower

Door to swim platform

Lazerett for Storage and A/C Units

Swim Platform

UPGRADES - REFIT

Numerous Upgrades and a major refit completed 2002-2007

1

2 Northern Lights (25Kw) Gen-Set

Headhunter IMO/MCA/USCG-Type II MSD

2

Naiad 302 Datum Stabilizers

Electronic A/C Control

3

4 Blade Nibral Props - Prop Shaft service and new bearings

Upgrade Auto Pilot to Roberson AP9 MK III

Windless Rebuild

In-frame Rebuild of Main Engine - Port

All New Galley appliances GE Profile (Fridge/Freezer, 4 Burner Stove with hot plate, Dishwasher, Trash compactor, Microwave

New Washer & Dryer

Radar Arch Equipped with Hydraulics to fold down to make passage to Great Lakes (19.5' height folded down)

4

Sandblast bottom back to fiberglass and reapply to Interlux Specifications meeting current and proposed International Laws regarding bottom paint

5

Digitize Wheelhouse and install new IMO approved (10mil) windows (all glass)

Digitize Aft Saloon and install new IMO approved (10mil) windows (all glass)

Rebuild all window frames

New Remanufactured Long Block for STBD Engine

New Auto Pilot pump

New hot water Heater

Stainless upper Exhaust Elbows

New fuel lines throughout vessel

New flow rate Fuel transfer meter

CUSTOM FEATURES

The original owner has been complimented by Cheoy Lee for some of the effects that he required on the boat. Among those are: 1. The arrangement of cabins. 2. The first of this group which had double doors to the salon and a separate portion of the salon separated for privacy purposes. 3. Cut glass dividers, designed by Susan Puleo. Upper aft masts slanting aft instead of forward. 4. A Jacuzzi in the stern. 5. Special doorway from the Master Stateroom to the aft deck should one want to go out in the morning to the Swim Platform for a swim or some sunshine. 6. Redesigned handrails on both forward sides. 7. The design of the galley and the dining room. 8. Many other modifications of interior design by Mary Jackson. The woodwork was designed by Susan Puleo and all the decorating fabrics, etc. were chosen by Mary Jackson, with many other positive enhancements by the owner.

EXCLUSIONS

Any and all personal items are to be excluded from sale

Exclusions

Owner's personal belongings.

Disclaimer

The Company offers the details of this vessel or yacht in good faith but cannot guarantee or warrant the accuracy of this information nor warrant the condition of the vessel. A buyer should instruct his representatives, agents, or his surveyors, to investigate such details as the buyer desires validated. This vessel or yacht is offered subject to prior sale, price change, or withdrawal without notice.

PHOTOS



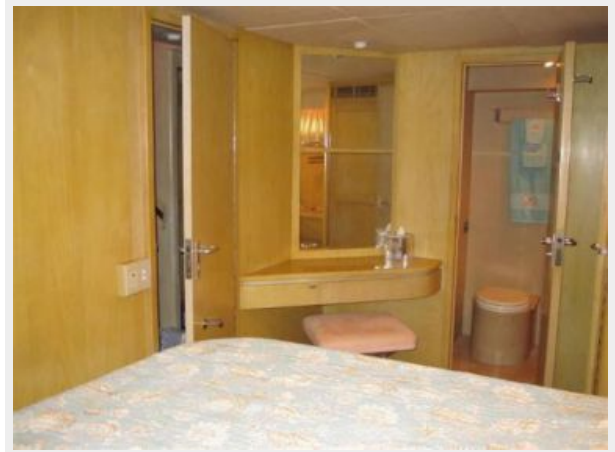
















CONTACTS

Andrey Shestakov, leading yacht broker of the sales department of Shestakov Yacht Sales Inc. Shestakov Yacht Sales Inc., the official representative of the Miami/Fort Lauderdale FL headquarters.

Contact details

Email: andrey@shestakovyachtsales.com

Web: shestakovyachtsales.com/en/

Telephones

USA: +1(954)274-4435

Office hours

Monday – Saturday: **9:00 - 21:00** EDT

Sunday: **closed**

Address



Harbour Towne Marina, 850 NE 3rd St,
STE 213, Dania, FL 33004