

## 92FT 1988 CHEOY LEE 92-CPMY — CHEOY LEE



**Судостроитель:** CHEOY LEE

**Год постройки:** 1988

**Модель:** Моторная яхта

**Цена:** ЦЕНА ЯХТЫ ПО ЗАПРОСУ

**Местонахождение:** United States

**Длина общая:** 92' 0" (28.04m)

**Ширина:** 21' 0" (6.40m)

**Макс. осадка:** 5' 9" (1.75m)

**Крейс. скорость:** 16 Kts. (18 MPH)

**Макс. скорость:** 21 Kts. (24 MPH)

Купить 92ft 1988 Cheoy Lee 92-CPMY — CHEOY LEE а также выбрать подходящую вам яхту из нашего каталога яхт вам поможет опытный яхтенный брокер Андрей Шестаков. На сегодняшний день компания Shestakov Yacht Sales Inc. имеет большое количество яхт в собственном списке продаж, а также тесно сотрудничает со всеми крупными яхтенными производителями по всему миру. Для того чтобы купить яхту 92ft 1988 Cheoy Lee 92-CPMY — CHEOY LEE а также проконсультироваться по любому вопросу связанному с покупкой, продажей, чартером яхт позвоните по телефону **+7(918)465-66-44**.

# ОГЛАВЛЕНИЕ

ОГЛАВЛЕНИЕ	2
ХАРАКТЕРИСТИКИ	3
Основная информация	3
Размеры	3
Скорость, вместимость и масса	3
Размещение	3
Корпус и палуба	3
Информация о двигателе	4
ПОДРОБНОЕ ОПИСАНИЕ	5
DIMENSIONS	5
ACCOMODATIONS	5
Vessel walkthrough	6
Salon	7
Electrical	7
Electronics and Navigation	8
СОСКИТ	8
UPGRADES - REFIT	9
CUSTOM FEATURES	10
EXCLUSIONS	10
Исключения	10
Отказ от ответственности	10
ФОТОГРАФИИ	11
КОНТАКТЫ	20
Контактная информация	20
Телефоны	20
Время работы	20
Адрес	20

# ХАРАКТЕРИСТИКИ

## Основная информация

Тип судна: Моторная яхта

Подкатегория: Flybridge

Модельный год: 1988

Год постройки: 1988

Страна: United States

## Размеры

Длина общая: 92' 0" (28.04m)

Ширина: 21' 0" (6.40m)

Макс. осадка: 5' 9" (1.75m)

## Скорость, вместимость и масса

Крейс. скорость: 16 Kts. (18 MPH)

Макс. скорость: 21 Kts. (24 MPH)

Объем топливного бака: 3300 Gallons

## Размещение

Всего кают: 4

Всего коек: 4

## Корпус и палуба

Материал корпуса: Fiberglass

---

## Информация о двигателе

---

**Двигатели:** 2

**Производитель:** Detroit Diesel

**Модель:** 12V71TI

**Тип двигателя:** Inboard

**Тип топлива:** Diesel

---

# ПОДРОБНОЕ ОПИСАНИЕ

---

## DIMENSIONS

---

Length ..... 92 ft ..... 28.1 meters

Beam ..... 21 ft ..... 6.4 meters

Draft ..... 5 ft 9 in ..... 1.75 meters

Fuel Tankage .....3300 gal .....12,492 liters

Cruise Speed..... 16. kts

Max Speed ..... 21 kts

Engines: 2 x 850 HP Detroit 12V71TI ( rebuilt)

Generators: (2) x 25kw Northern Lights

Naiad 302 Datum Stabilizers

Cabins: 4 Guest Staterooms ( sleeps 8), 2 Crew cabins (sleeps 4)

---

## ACCOMODATIONS

---

Custom built yacht.

Accommodations for 8 guests in 4 staterooms.

Separate crew accommodations for 4

. Elegant and spacious, the Main Salon has the feeling of a much larger vessel. Her areas are enhanced by custom designed glass panels, artist executed using unique medium carved, sandblasted and painted by award winning Sandcastle Studios. Mirrored Dining Salon - dining table, custom designed in Italy , accommodating 10-12 people.

### **Master Stateroom:**

King Bed

En-suite his and hers heads - Tub shower and toilet to Port Vanity table aft

Mirrored closets and door to cockpit

Full Entertainment system

Cedar closets

2 Night Tables

Drawered and Shelved Cabinets additional storage areas

**VIP Stateroom:**

Queen Berth

**Guest Stateroom : 2**

Overlapping Single berths

En-suite head with shower/shared with 2nd room

Vanity tables

TV Entertainment

Cedar Closet

**Crew Quarters:**

Sleeps 4 in 2 Cabins

Dining area

Microwave and Sink

Refrigerator

TV,DVD/CD Entertainment

Common Head and Shower

Washer/Dryer

Entrance from Dining Salon

---

## Vessel walkthrough

---

This Vessel was custom built by Cheoy Lee for the original owner in 1988. Her beautiful lines are reflected by her inviting and unusual use of space inside the vessel. Spacious and airy salon with bar, games table and desk/work area. Day head on port side of bar. Enclosed aft deck creates an inviting private area for conversation, quiet relaxation, open feel, yet totally protected

vantage point from which to enjoy the sea.

All cabins are below the main deck. Forward from main salon is the Pilothouse, divided from salon by Custom Designed Etched Glass Doors which may be used to achieve privacy when desired..

The Galley is forward and below port side with formal dining for ten (10 -12) to starboard on the main deck. Forward from dining are stairs down to crew quarters,

All four guest staterooms are accessed from stairs located in main salon.

Aft, the Master has separate stairs. Also a private entrance leading from the cockpit, enhancing owners use of cockpit, jacuzzi and deck, without entering any other part of the yacht.

The remaining three cabins are accessed from stairs located forward, port side of the salon.

---

## Salon

---

Full bar forward with seating and TV

Day Head/powder room to port forward

Full Entertainment system with pop up TV

Dining Table for 4

Couches and cocktail table for 12

Aft private lounge area can be closed off from Salon

Entrance to Master to port

Aft Desk and work table middle to port

---

## Electrical

---

(2) Northern lights generator 25kw (new 02)

(2) Isolation transformer

(2) 50-amp dockside electrical cable

(10) 24DC bilge pumps

240/120 vAC 24/12 vDC

---

## Electronics and Navigation

---

Robertson AP9 autopilot

(2) Garmin 120 GPS's

Furuno 72 mile radar

Sea 322SSB radio

(3) ACR spot lights, forward and aft

Trimble Navigator

Lorance GPS 10x

Furuno SAT FSN70

Panasonic D308 PBX telephone/intercom

Built in cellphone PBX System

Computer/chart plotters w/Nav software charts

Direct TV Satelite receivers for guest & crew

ICOM DSC M127 VHF

Captains chairs

Raytheon hailer

Engine room monitor

Furuno weather fax

Furuno color fish finder/dept sounder

Data marine/depth,speed, wind

---

## COCKPIT

---

Private Entrance to Master Strm

Jacuzzi

Hot and Cold Shower

Door to swim platform



Lazerett for Storage and A/C Units

Swim Platform

## UPGRADES - REFIT

---

Numerous Upgrades and a major refit completed 2002-2007

1

2 Northern Lights (25Kw) Gen-Set

Headhunter IMO/MCA/USCG-Type II MSD

2

Naiad 302 Datum Stabilizers

Electronic A/C Control

3

4 Blade Nibral Props - Prop Shaft service and new bearings

Upgrade Auto Pilot to Roberson AP9 MK III

Windless Rebuild

In-frame Rebuild of Main Engine - Port

All New Galley appliances GE Profile (Fridge/Freezer, 4 Burner Stove with hot plate, Dishwasher, Trash compactor, Microwave

New Washer & Dryer

Radar Arch Equipped with Hydraulics to fold down to make passage to Great Lakes (19.5' height folded down)

4

Sandblast bottom back to fiberglass and reapply to Interlux Specifications meeting current and proposed International Laws regarding bottom paint

5

Digitize Wheelhouse and install new IMO approved (10mil) windows (all glass)

Digitize Aft Saloon and install new IMO approved (10mil) windows (all glass)

Rebuild all window frames

New Remanufactured Long Block for STBD Engine

New Auto Pilot pump

New hot water Heater

Stainless upper Exhaust Elbows

New fuel lines throughout vessel

New flow rate Fuel transfer meter

---

## CUSTOM FEATURES

---

The original owner has been complimented by Cheoy Lee for some of the effects that he required on the boat. Among those are: 1. The arrangement of cabins. 2. The first of this group which had double doors to the salon and a separate portion of the salon separated for privacy purposes. 3. Cut glass dividers, designed by Susan Puleo. Upper aft masts slanting aft instead of forward. 4. A Jacuzzi in the stern. 5. Special doorway from the Master Stateroom to the aft deck should one want to go out in the morning to the Swim Platform for a swim or some sunshine. 6. Redesigned handrails on both forward sides. 7. The design of the galley and the dining room. 8. Many other modifications of interior design by Mary Jackson. The woodwork was designed by Susan Puleo and all the decorating fabrics, etc. were chosen by Mary Jackson, with many other positive enhancements by the owner.

---

## EXCLUSIONS

---

Any and all personal items are to be excluded from sale

---

## Исключения

---

При продаже яхты исключаются личные вещи владельца.

---

## Отказ от ответственности

---

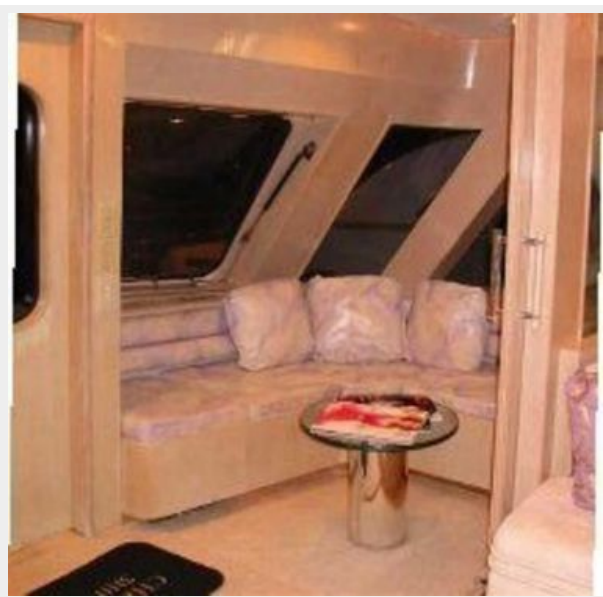
Компания предоставляет описание судна или яхты добросовестно, но не может гарантировать точность этой информации, а также не ручается за техническое состояние. Покупатель должен проинструктировать своих агентов или оценщиков исследовать представленную информацию более подробно, по собственному желанию. Продажа судна или яхты, изменение цены или снятие с продажи будет происходить без предварительного уведомления.

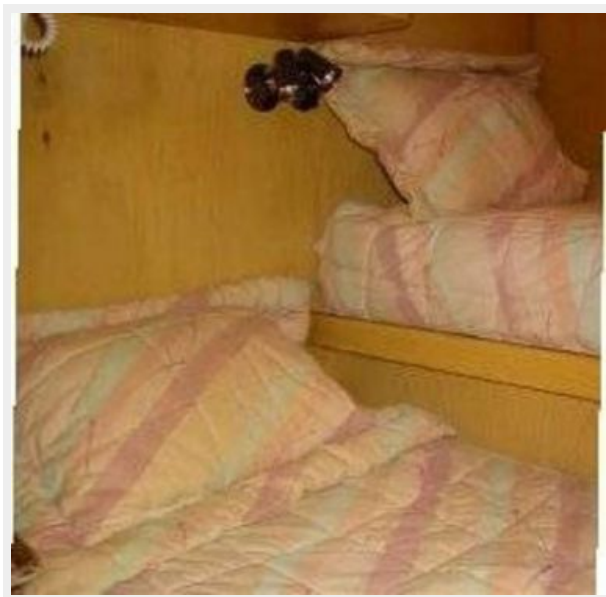
# ФОТОГРАФИИ





















# КОНТАКТЫ

---

Андрей Шестаков (Andrey Shestakov) – ведущий яхтенный брокер отдела продаж яхт и судов компании Shestakov Yacht Sales Inc. Официальный представитель Shestakov Yacht Sales Inc. для русскоговорящих клиентов в центральном офисе компании в Майами/Форт Лодердейл/Флорида/США.

## Контактная информация

---

Email: [andrey@shestakovyachtsales.com](mailto:andrey@shestakovyachtsales.com)

Web: [shestakovyachtsales.com](http://shestakovyachtsales.com)

## Телефоны

---

Краснодарский край: **+7(918)465-66-44**

США, Майами, Флорида: **+1(954)274-4435**

## Время работы

---

Понедельник – Суббота: **9:00 - 21:00**  
EDT

Воскресенье: **Закрито**

## Адрес

---



Harbour Towne Marina, 850 NE 3rd St,  
STE 213, Dania, FL 33004