

TJ ESPERANZA — AMELS



Судостроитель: AMELS

Год постройки: 1999

Модель: Мега-яхта

Цена: **ЦЕНА ЯХТЫ ПО ЗАПРОСУ**

Местонахождение: Italy

Длина общая: 164' 1" (50.00m)

Ширина: 29' 7" (9.00m)

Мин. осадка: 10' 3" (3.10m)

Макс. осадка: 10' 6" (3.20m)

Крейс. скорость: 11 Kts. (13 MPH)

Макс. скорость: 14 Kts. (16 MPH)

Купить TJ Esperanza — AMELS а также выбрать подходящую вам яхту из нашего каталога яхт вам поможет опытный яхтенный брокер Андрей Шестаков. На сегодняшний день компания Shestakov Yacht Sales Inc. имеет большое количество яхт в собственном списке продаж, а также тесно сотрудничает со всеми крупными яхтенными производителями по всему миру.

Для того чтобы купить яхту TJ Esperanza — AMELS а также проконсультироваться по любому вопросу связанному с покупкой, продажей, чартером яхт позвоните по телефону **+7(918)465-66-44**.

ОГЛАВЛЕНИЕ

ОГЛАВЛЕНИЕ	2
ХАРАКТЕРИСТИКИ	3
Обзор	3
Основная информация	4
Размеры	4
Скорость, вместимость и масса	4
Размещение	4
Корпус и палуба	4
Информация о двигателе	5
ПОДРОБНОЕ ОПИСАНИЕ	6
SPECIFICATION	6
Исключения	11
Отказ от ответственности	11
ФОТОГРАФИИ	12
КОНТАКТЫ	24
Контактная информация	24
Телефоны	24
Время работы	24
Адрес	24

ХАРАКТЕРИСТИКИ

Обзор

Fresh from her extensive 2014 refit TJ Esperanza offers the chance to acquire a magnificent timeless pedigree Dutch displacement Amels Superyacht in superb condition with a classic Terence Disdale Interior and equipped with zero-speed stabilisers. Operated under MCA and ISM since new, she has been maintained, regardless of cost, to the highest standards and is one of the best kept superyachts for sale of her type and age on the market. Her striking exterior design was also created by the renowned Terence Disdale and was built with steel hull and aluminium superstructure. Her vast deck spaces and luxurious interior ensure this beautiful motor yacht offers stately cruising with the emphasis on comfort for all on board. TJ Esperanza sleeps up to 12 guests in six staterooms. There is also room for up to 12 crew members to ensure the ultimate cruising experience. The full beam master suite is situated on the main deck and is decorated in calming white and cream colours. Soft lighting is used to create a relaxing atmosphere and emphasize the sense of space. The adjoining office area features an electric door (as does the master bathroom accessed via dressing room) so that each space can be accessed without awaking a sleeping guest (for example owner going to office or bathroom at night and not waking wife). The office has been modified to include considerable storage for files books and office supplies and is equipped with a LAN connection. There are a further two elegantly lit double staterooms, two twin cabins and one single with Pullman berth, all finished to the same high standard. The single cabin with a pullman berth is situated near the owners cabin and is ideal for maid or nurse. Alternatively with pullman berth down it makes a super room for children. The lounge area offers grand proportions and deluxe seating for all guests to relax together, leading into an elegant formal dining area. Rich woods, luxurious fabrics and demure lighting is used throughout to create flowing spaces with a balanced and sophisticated atmosphere. The bridge deck salon area with bar is the ideal place to come together for evenings of entertainment with games or watching movies on the flat screen television. The bar is equipped with ice makers, fridges, bottle and glass storage so that hostess can serve guests in place. The polished walnut upper deck table has been modified so that it may be enlarged to 12 guests in total comfort. Each of the bathrooms is finished in impeccable style with magnificent marble sinks and baths, retaining a modern yet luxurious feel. This stunning motor yacht's huge sun deck area houses a large, modern Jacuzzi and ample U-shaped seating with table, perfect for enjoying the breath-taking views during the day. Also on deck is a shaded bar with seating and large sun lounging area, all designed with a clean and contemporary style. The entertainment systems have been upgraded so that all rooms can watch a different TV channel with a choice currently of English speaking SKY or European Satellite stations in multiple languages. The galley has been equipped by the chef with "no expense spared" and the dumb waiter adds to the ease of service. There are also two huge wine cellars on board.

Основная информация

Тип судна: Мега-яхта

Модельный год: 1999

Год постройки: 1999

Год обновления: 2014

Страна: Italy

Размеры

Длина общая: 164' 1" (50.00m)

Длина по ватерлинии: 146' 0" (44.50m)

Ширина: 29' 7" (9.00m)

Мин. осадка: 10' 3" (3.10m)

Макс. осадка: 10' 6" (3.20m)

Скорость, вместимость и масса

Крейс. скорость: 11 Kts. (13 MPH)

Макс. скорость: 14 Kts. (16 MPH)

Чистый вес: 603 Pounds

Расход топлива: 36.98408728 Gallons

Размещение

Всего кают: 6

Всего коек: 12

Спальные места: 12

Всего ком. состава: 12

Каюта капитана: Да

Койки экипажа: 12

Спальных мест экипажа: 12

Комм. состав экипажа: 12

Корпус и палуба

Материал корпуса: Steel

Комплектация корпуса: Full
Displacement

Цвет корпуса: White

Информация о двигателе

Двигатели: 2

Производитель: Cummins

Модель: KTA38 M2

Тип топлива: Diesel

ПОДРОБНОЕ ОПИСАНИЕ

SPECIFICATION

SPECIFICATIONS

CONSTRUCTION Steel hull and Aluminium superstructure MAIN CHARACTERISTICS

General

BUILDER: AMELS B.V HOLLAND YEAR: 1999 LOA: 50m / 164' 0"

BEAM: 9m / 29' 6"

DRAFT: 3.2m / 10' 2"

CLASSIFICATION: MCA, Lloyds + 100A1 Yacht + LMC UMS GROSS TONS: 603 Tons NET TONS: 180 Tons DISPLACEMENT: 538 Tons (Light Ship)

DESIGNER: Terence Disdale NAVAL ARCHITECT: Amels INTERIOR DESIGNER: Terence Disdale

HULL COLOUR: White

Capacities

CRUISE SPEED: 11 Knots (approx)

MAXIMUM SPEED: 14 Knots (approx)

RANGE: 5000 nm (approx)

Range and Fuel Consumption: Economical: 10knots-140litres/hr 5000 n.m@1200 RPM Cruising: 11knots-280litres/hr 4000n.m@1400RPM Fast Cruising: 13knots-325litres/hr 3340n.m@1600RPM Maximum: 14Knots-420litres/hr 3180n.m@1800RPM FUEL CAPACITY: 95,380 Litres (25,196 US Gallons) WATER CAPACITY: 17,430 Litres (4,604 US Gallons)

MACHINERY

ENGINES: 2 x CUMMINS 1,200HP ENGINE MODEL: KTA 38 M2 895kW

ENGINE HOURS: Port: 12,910hrs (17Feb2014) £Starboard: 12,910hrs (17Fev2014) Major overhal 2009 GEARBOXES: Reintjes WAF 541 reverse reduction (4.45:1 ratio)

STEERING: Steering gear: Tenfjord JR2.160 Two rudders, One double acting ram Emergency steering position aft STABILIZERS: Quantum Zero speed arc 3001 MK2(new 2008)

GENERATORS: Port: 1x Caterpillar C9 DI 155kw (205 hp) New 2010

STBD: 1x Caterpillar C9 DI 155kw (205 hp) New 2010

Emergency: 1x Cummins 4BT 3.9 28kw (located on main deck) 1 x Load Bank 75kw (new 2009)

GENERATOR HOURS: Port: 5,415 hrs (17-Fev-14)

Starboard: 5,195 hrs (17-Fev-14)

ELECTRICITY: 380v AC 3 phase 50Hz 220v AC single phase 50Hz

4 wire with neutral earth 24v DC SHORE POWER: 380/ 400/ 415 V AC - 3 phase, 50 Hz, 90Kva (135 Amps) ASEA 2 X 63 KvA (NEW 2012)

BATTERIES: 24v Gel batteries with Mastervolt chargers serving: 3 x sets for Generator starting 2 x sets for Emergency power for deck cranes 1 x set for Radio battery 1 x set for Ship's emergency 24v DC systems 1 x set for Watertight doors emergency power and supply

Air Conditioning

- * Heinen and Hopman of Holland. Marine Air systems
- * 3 x chilled water units (185,000 BTU cooling capacity each).
- * 4 x Hermetic compressors per chiller unit.
- * Individual fan coil units with electric heater for each room.
- * 2 x Fresh Air Make up Units

Other Machinery

- * Propellers: 2x Rubber Design 5 bladed outward turning
- * Watermakers: 2x HEM series 30.540Litres/HR = 2x 12,960Litres/day
- * Steering gear: Tenfjord type F803-1301
- * Bowthruster: 145 Hp. (110kw) Holland Roer Prop
- * Fuel filtration: Vokes Coalescer type 361/1
- * Oil separator: Facet CPS 2.5
- * Dock water treatment: Silver ionizer and Octo Marine filter/ water softener unit
- * Electric motors: 2 x Stork FRE 50-205 fire/bilge pumps driven by 11 kw
- * Electric boilers: 2 x 12KW ACV
- * Sewage treatment: Hamann Wassertechnik / Evac toilet system

ACCOMMODATIONS

Owners' suite with, bathroom, dressing room, lounge area and en suite office on main deck.

Two double cabins each with en suite bathroom and dressing area.

Two twin cabins with shower rooms en suite.

One twin guest / children's cabin (1x single and 1 x pullman bunk) on the main deck level with shower room.

All guest areas / cabins have new Tai Ping carpets fitted throughout, 2011.

Crew accommodations consist of a Captain's double cabin with shower room en suite, four twin cabins with shower rooms and one triple cabin with shower room.

GALLEY AND LAUNDRY

Blue seal turbofan Oven Gagenau Char Grill

Eloma combi-steamer Oven Magimix Cuisine 5100 food processor

Technox induction glass cook top Large walk-in fridge/ freezer

MenuMaster Microwave oven 900 W Kitchen & cake mixer

Deep fryer (Domino by Atag, 29cm) Miele Supercombi G7856 dishwasher Heating Mix Master Liebherr small domestic fridge 2 x Liebherr cave a vins (new 2009) Ariane Iron

Ironing board 2 x Miele Professional pt 5136 dryers

BT phone Black & decker dust buster

2 x Miele Professional PW 5065 washing machines

COMMUNICATIONS NAVIGATION AND ENTERTAINMENT

Communications Equipment Two VHF Sailor radio telephones each with VHF digital Selective calling (DSC) unit, Two Icom handled VHF radios Cellular System two GSM transceiver with voice/fax/data facilities interfaced to PABX One HP Proliant network server running 5 Stations throughout yacht One Sea-tel 4003 V-Sat enabling

wireless internet throughout yacht and facility for Voice over IP Connection

Panasonic Telephone exchange with direct trunkline access to Satcom, GSM and shoreline facilities. Printer to log calls

One Sea-Tel 4098 TV system

Five laptop computers One Inmarsat Standard C terminal Sailor (GMDSS) with LRIT One Sailor HF/SSB radiotelephone DSC and Watch Receiver One Dell PC in wheel house with Dell

monitor One Twist GPRS Modem with voice/fax/data facilities Transas ECDIS chart system installed on bridge computer One Nokia GSM Premicell for data as backup to GPRS modem One A3/A4 Wi-Fi printer/scanner/facsimile / photocopier interfaced to telephone exchange (new 2011) Phonotech Command Intercom System 30 Two thrane and thrane fleet 55 voice, fax, data Two Sailor RT 4822 VHF-DSC One VIA Sailor TT3000E SAT-C One Sailor TT3000E One Seatel 4894 One Sailor HC4500

One Seatel 4003 V-SAT. (New WIFI throughout 2012)

Navigation Equipment One C.Plath magnetic compass with transmitting magnetic compass (TMC) unit One Furuno echo sounder with graphic display

ne C.Plath autopilot One C.Plath gyro compass

Two Leica GPS units One C.Plath Doppler Speed Log

Walker wind speed and direction indicator One JRC GMDSS Navtex receiver

Two x Decca Bridgemaster ARPA colour radar (96 mile range) X band One Saab AIS/GPS positioning system SIMRAD GC80 Maintenance Free (New 2012) Two Furuno Far 2117 X Band (New 2009) One Plath Naviknot III One Furuno FCV 582 L One Transas Navisailor 3000

Entertainment Equipment

Sony LCD Televisions,DVD players and

Amplifiers in Main Salon and all Guest cabins, linked to 10 x Sky Digital Television decoders 8 x Bis TV decoders and controlled via pronto touchscreen controllers Owners Cabin: 52" Pioneer Plasma TV, HD sky television receiver, HD DVD player and Denon Amplifier driving B&O speakers.

Central Jukebox and all controlled via Phillips Pronto Pro Sony 200 disc Jukebox interfaced to Owners cabin, Main Salon and Bridge Deck Salon Playstation Game Console including assorted games Crew mess 128cm Plasma TV with dedicated Sky television digital receiver Sundeck 8 seater, 12kW heated Jacuzzi with 2 hydromassaging pumps Wii Game Console including assorted games 500 + Catalogues Dvd library

Upper salon wall mounted 42" Pioneer Plasma

TV with HD DVD player, Sony 7 Channel Amplifier, interfaced with Central jukebox and all controlled via Phillips pronto External speaker system on Main Deck, Bridge Deck and Sun Deck each with remote volume control Crew cabins with LCD televisions and DVD players TENDERS AND WATERSPORTS EQUIPMENT

Nautica 5.6M RIB 115 HP Yamaha 4 strokeoutboard (New 2009) Nautica 5.6M RIB 115 HP Yamaha 4 stroke outboard (New 2008)

Both 12 person capacity launch weight approx 1,100kg

Yamaha GP 1300 Wave Runner 2 stroke (rebuilt/repainted 2011) Yamaha GP 800 Wave Runner 2 stroke (rebuilt/repainted 2011)

DECK EQUIPMENT

Windlasses - Bow: 1 x STEEN 19-2-50-5 Chains -Port: 4 shackles 22mm Studlink chain cable Starboard: 5 shackles 22mm Studlink chain cable Stern passerelle - Aljo Technoship Capstans - Stern : 2 x STEEN 59-48-3 Anchors - Bow: 2 x 360kg High Holding Power "Pool-N"

Sea stair ladder - marquipt Cranes 2 x Acquamarine single arm & boom SWL 2,000kg 1 x beam crane for jet ski launching lazarette (New 2012)

One IMAX 354C searchlight (can be fitted onort or stbd bridge wings)

Swimming platform with shower Davit - Yachtec 2000 KG SAFETY AND SECURITY EQUIPMENT 6 x watertight bulkheads Aldis lamp 2 x Jotron 9 GHz SART 3 x GMDSS handheld VHF radios 2 x Immersion suits 4 x Rocket line throwing appliances

Kannard 406 WH EPIRB 8 x Lifebuoys

Air horn with automatic signal control Galley Hood fixed CO2 installation Portable fire extinguishers Alarms on all escape doors

3 x Tebul Oy hydraulic sliding watertight doors Engine room Ajax Fixed automatic CO2 installation

Fire fighting Ring Main with 12 hydrant hoses Coded locks on Port and Starboard entrance and nozzles doors Simac Deltamacs CSI 8506 Central Alarm System 122 channels used for UMS system Two CCTV monitor split - screens in both wheelhouse and crew area Fresh/Seawater sprinkler system Minerva Marine Fire detection system T890 Panasonic WJ410 closed circuit security television (CCTV) with four cameras 4 x 16 man RD davit launched inflatable life rafts in glass fibre valises Two breathing apparatus with firemans outfits 2 x Draeger EEBD

22 x Thermal protection aids 4 X Surviva 16 person

Nautika 5.6M RIB 115 HP Yamaha 4 Stroke Outboard 32 + 2 child life jackets CO2 Fixed system galley COMMENTS

TJ Esperanza" has been maintained, regardless of cost, to the highest standards and is one of he best-kept yachts of her

type and age, afloat. She boasts an excellent reputation throughout the industry with a fully documented history.

Disclaimer

The Company offers the details of this vessel in good faith but cannot guarantee or warrant the accuracy of this information nor warrant the condition of the vessel. A buyer should instruct his agents, or his surveyors, to investigate such details as the buyer desires validated. This vessel is offered subject to prior sale, price change, or withdrawal without notice.

Исключения

При продаже яхты исключаются личные вещи владельца.

Отказ от ответственности

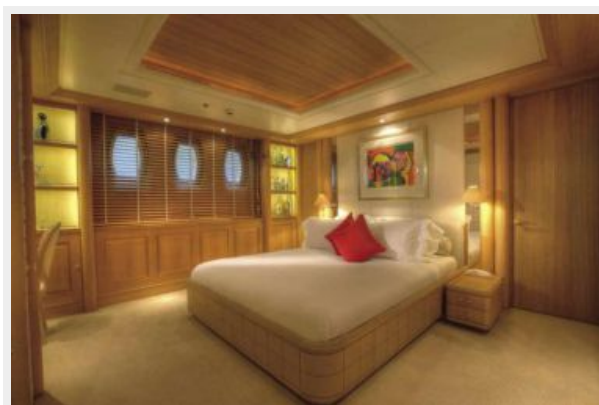
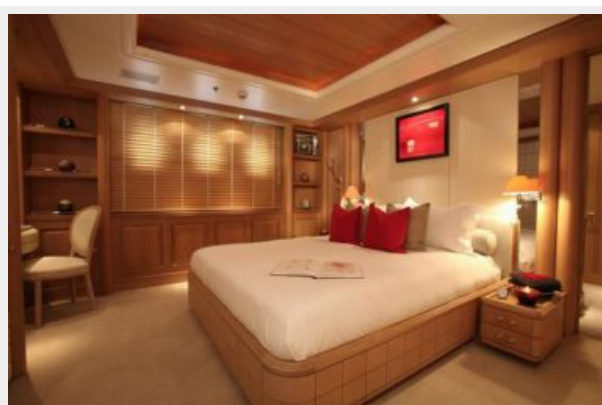
Компания предоставляет описание судна или яхты добросовестно, но не может гарантировать точность этой информации, а также не ручается за техническое состояние. Покупатель должен проинструктировать своих агентов или оценщиков исследовать представленную информацию более подробно, по собственному желанию. Продажа судна или яхты, изменение цены или снятие с продажи будет происходить без предварительного уведомления.

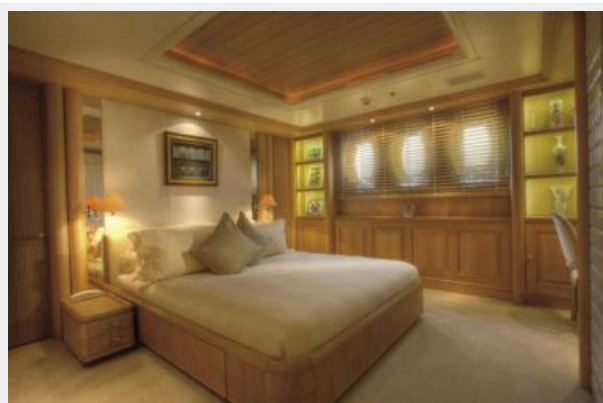
ФОТОГРАФИИ

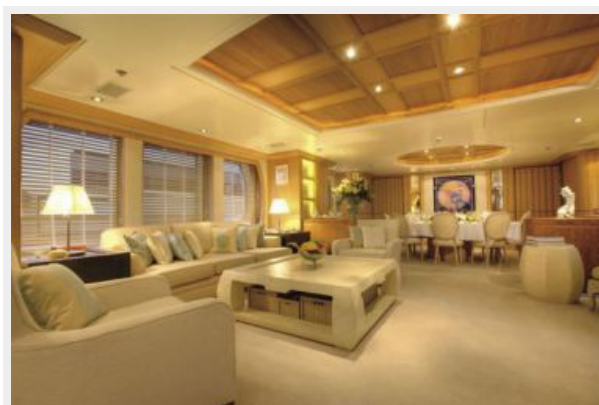
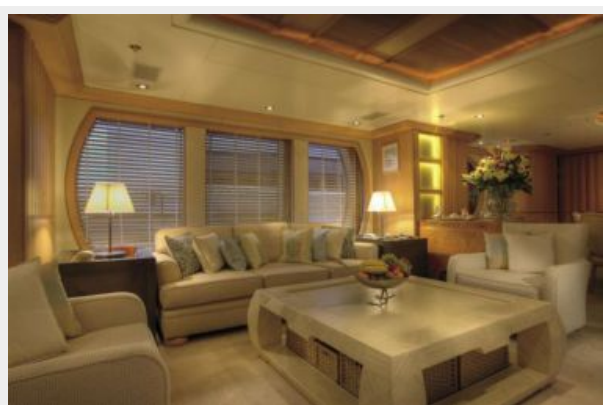


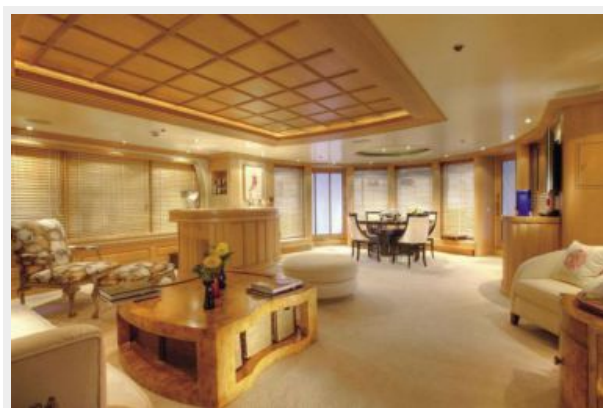
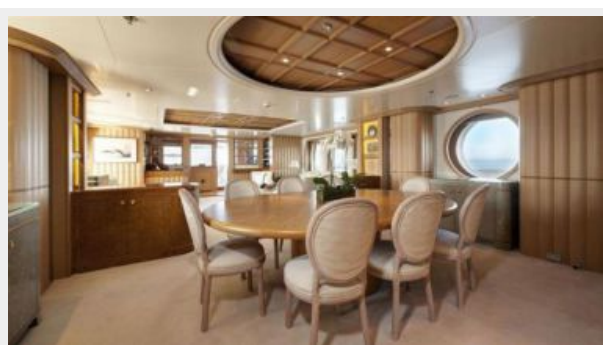
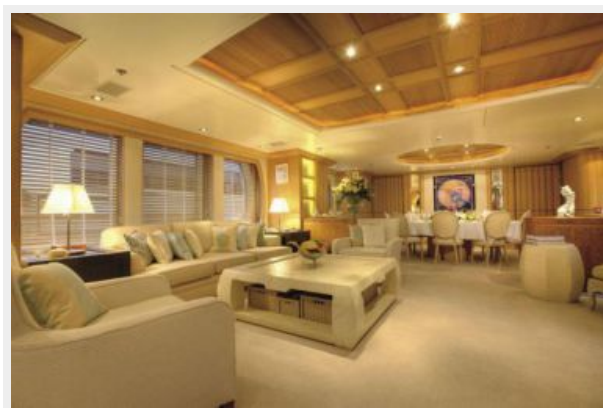




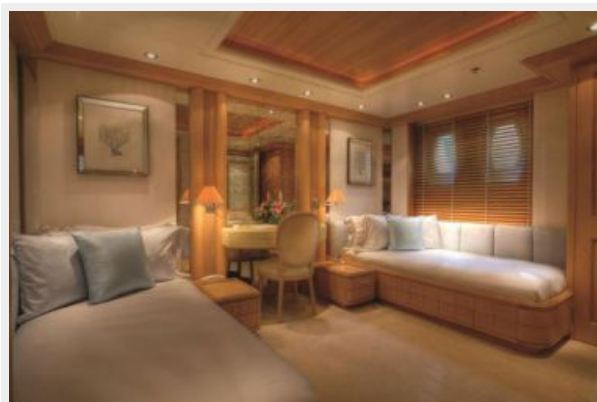
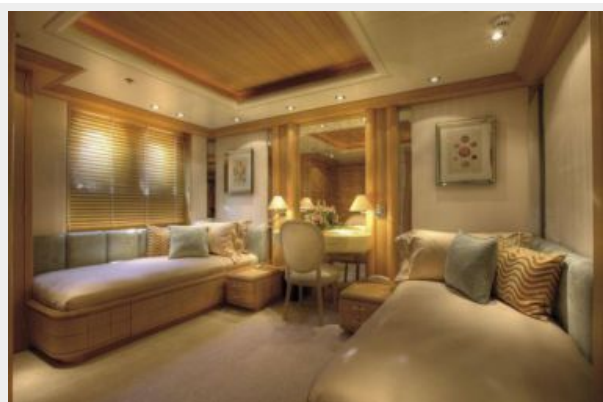


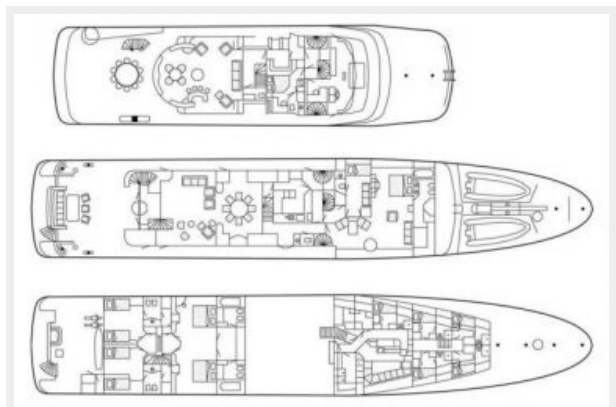


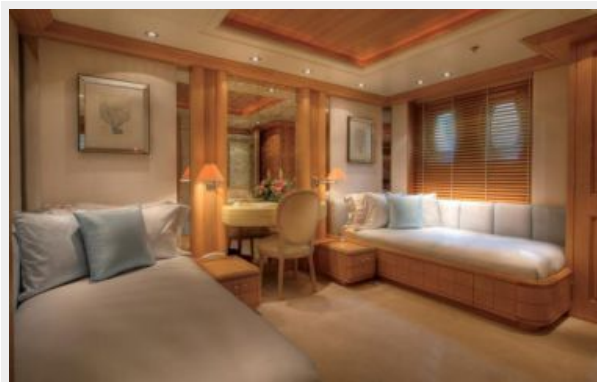
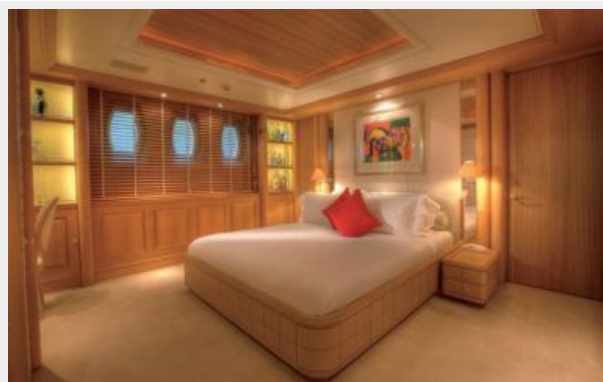














КОНТАКТЫ

Андрей Шестаков (Andrey Shestakov) – ведущий яхтенный брокер отдела продаж яхт и судов компании Shestakov Yacht Sales Inc. Официальный представитель Shestakov Yacht Sales Inc. для русскоговорящих клиентов в центральном офисе компании в Майами/Форт Лодердейл/Флорида/США.

Контактная информация

Email: andrey@shestakovyachtsales.com

Web: shestakovyachtsales.com

Телефоны

Краснодарский край: **+7(918)465-66-44**

США, Майами, Флорида: **+1(954)274-4435**

Время работы

Понедельник – Суббота: **9:00 - 21:00**
EDT

Воскресенье: **Закрето**

Адрес



Harbour Towne Marina, 850 NE 3rd St,
STE 213, Dania, FL 33004