

## SEA SCAPE — SILVERTON



**Судостроитель:** SILVERTON

**Год постройки:** 2003

**Модель:** Моторная яхта

**Цена:** **ЦЕНА ЯХТЫ ПО ЗАПРОСУ**

**Местонахождение:** United States

**Длина общая:** 43' 0" (13.11m)

**Ширина:** 14' 10" (4.52m)

**Макс. осадка:** 3' 9" (1.14m)

**Крейс. скорость:** 22 Kts. (25 MPH)

**Макс. скорость:** 26 Kts. (30 MPH)

Купить Sea Scape — SILVERTON а также выбрать подходящую вам яхту из нашего каталога яхт вам поможет опытный яхтенный брокер Андрей Шестаков. На сегодняшний день компания Shestakov Yacht Sales Inc. имеет большое количество яхт в собственном списке продаж, а также тесно сотрудничает со всеми крупными яхтенными производителями по всему миру.

Для того чтобы купить яхту Sea Scape — SILVERTON а также проконсультироваться по любому вопросу связанному с покупкой, продажей, чартером яхт позвоните по телефону **+7(918)465-66-44**.

# ОГЛАВЛЕНИЕ

ОГЛАВЛЕНИЕ	2
ХАРАКТЕРИСТИКИ	4
Обзор	4
Основная информация	4
Размеры	4
Скорость, вместимость и масса	4
Размещение	4
Корпус и палуба	5
Информация о двигателе	5
ПОДРОБНОЕ ОПИСАНИЕ	6
Overview	6
Salon	6
Dinette	6
Galley	6
Master Stateroom	7
Master Head	7
VIP Stateroom	7
VIP Head	8
Helm Station	8
Flybridge	8
Electrical System	9
Engine Room	9
Decks	9
Aft Deck	10
Broker's Remarks	10
Исключения	10
Отказ от ответственности	10
ФОТОГРАФИИ	11

---

КОНТАКТЫ	17
Контактная информация	17
Телефоны	17
Время работы	17
Адрес	17

---

# ХАРАКТЕРИСТИКИ

## Обзор

"WOW The 2003 Silverton 43' Motor Yacht is HUGH!"

"It has to be bigger than the 43". "I could spend the entire summer aboard".

Are a few comments you hear when others walk aboard "Sea Scape".

You will find this yacht well equipped and super clean.

Open and airy Aft Deck and Flybridge allowing for plenty entertaining space.

## Основная информация

**Тип судна:** Моторная яхта

**Модельный год:** 2003

**Год постройки:** 2003

**Страна:** United States

## Размеры

**Длина общая:** 43' 0" (13.11m)

**Ширина:** 14' 10" (4.52m)

**Макс. осадка:** 3' 9" (1.14m)

## Скорость, вместимость и масса

**Крейс. скорость:** 22 Kts. (25 MPH)

**Макс. скорость:** 26 Kts. (30 MPH)

**Водоизмещение:** 31000 Pounds

**Вместимость воды:** 150 Gallons

**Вместимость сточного бака:** 68 Gallons

**Объем топливного бака:** 400 Gallons

## Размещение

**Всего кают:** 2

**Всего ком. состава:** 2

---

## Корпус и палуба

---

**Материал корпуса:** Fiberglass

---

## Информация о двигателе

---

**Двигатели:** 2

**Производитель:** Cummins

**Модель:** 6СТА 8.3

**Тип двигателя:** Inboard

**Тип топлива:** Diesel

---

# ПОДРОБНОЕ ОПИСАНИЕ

---

## Overview

---

Feature-rich motor yacht with huge interior suits live-aboard and cruisers alike. Raised walkways from bow to bridge permit cavernous, full-beam salon the equal of much larger boats. Interior highlights include appealing cherry cabinetry, home-size galley, posh Ultra-leather salon seating, divided head compartments for and aft allow better use of the space.

## Salon

---

A few short steps down from the Aft deck, will lead you into a huge open salon with large windows that provide ample natural lighting for a added feel of openness. A large L-shaped sofa on the port side provides seating for the dinette and is positioned across from the equally large starboard side L-sofa with a pull out sleeper. A ottoman with built in storage and a padded surface for propping your feet up provides a nice addition to this space

- 46" Samsung LED TV
- KVH M3 SAT TV System
- JVC/Bose Surround Sound System
- Engine Room Access
- Beautiful Cherry Wood Cabinets
- A/C and D/C Breaker Panel

## Dinette

---

- L-Shaped Dinette
- Adjustable Height Table
- Converts to Pull-Out Sleeper
- Overhead Dimmable Lights Throughout
- Central Vacuum System, Service all Cabins

## Galley

---

Open to the main salon, the galley offers large counter space and large storage compartments for a total of 9 plus a pullout pantry slider door. For meal preparation, the galley is equipped with all the comforts of home with a real oven, convection microwave, large stainless steel sink, 3 burner electric cook top, and a full stand up electric refrigerator. Hardwood floors protect against any spills, and there is room for just about everything you will need in this home away from home.

- Dual Voltage Large Refrigerator Freezer
- Coffee Maker
- Corian counter Tops
- Abundant Natural Light

---

## Master Stateroom

---

Walk into the full beam master stateroom and it will quickly become apparent why people chose the aft cabin arrangement. Center line on the starboard side is a large island queen facing an in-suite entertainment center, and elegantly presented entryways into the private head and shower. These two spaces are separated by a vanity area with Corian sink and mirrored medicine cabinets, natural lighting is offered on every outside wall, and storage can be found throughout in the form of dresser drawers, and large hanging closets.

- 9 Large Storage Compartments Including 2 Large hanging Closets
- Three Large Windows for Natural Light
- Large Split Head and Shower Arrangement
- Overhead DC Lighting with Dimmers
- Private Head and Shower
- Toshiba TV/VCR
- Abundant Storage below Bed

---

## Master Head

---

With natural lighting and a well appointed split plan arrangement, both the head and shower can be utilized at the same time while on-board. Space for personal care items is located throughout in the form of under counter storage, mirrored medicine cabinets, and tastefully done towel racks.

- Large Stand-Up Shower with Shelving for Personal Care Items
- Corian Counter surface with Sink and Storage Underneath
- Vacuum Flush Toilet
- Chrome Towel Racks
- Medicine Cabinet
- Tall Locker with Shelving
- Natural Lighting

---

## VIP Stateroom

---

Located forward, a center line island queen with easy access from either side: the VIP guest accommodations, will welcome your passengers with high head room and natural lighting. In-Suite entertainment is provided along with private head a access and a roomy stand up shower.

Hanging closets and ample storage compartments will give your passengers the room needed for extended stays, and a washer dryer combo unit is cleverly tucked away underneath the island queen for on-board laundry service.

- 26" Toshiba TV with DVD Player
- Washer/Dryer Combo
- 4 Storage Lockers
- Private Stall Shower and Head Access
- Large Storage Compartments Under Bed

## VIP Head

---

Located on the port side, the VIP head, which also serves as the day head via a separate entrance way from the stall shower by the full width of the stateroom. Corian counter surface accents the rich cherry interior, and natural lighting adds a feeling of openness to this space. Medicine cabinets and under sink storage provides a space for everything needed for a comfortable stay.

- Vacuum Flush Toilet
- Storage Under Sink
- Large Stand Up Shower with Opening Port Hole
- Overhead DC Lighting with Dimmers
- 2 Medicine Cabinets
- Vanity Mirror
- Corian Counter Surface

## Helm Station

---

- Three Wide Helm Seat
- Garmin 5208 Color Touch Screen GPS/Chart Plotter
- Raymarine RL80C 48 Mile Radar
- Raymarine ST6001 Auto Pilot
- Raymarine ST60 Depth Sounder
- Raymarine 215 VHF Radio with 8' Antenna
- Fiara Gauge Package
- Max Power Bow Thruster
- Windlass Control
- Sony Stereo System
- Dual Engine Controls

## Flybridge

---



Shelter from the elements is provided by a stainless Bimini (full enclosure) that features a very high quality EX2CY and Strataglas enclosure for optimal air conditioning retention and overall clarity. Two large lounge style seating areas located on each side make for a great space to relax, while underway or when at rest. Access to the bow area is on each side, and the molded in stairway with high railings make for safe and easy passage.

- Island Storage/Counter Surface Located Behind Helm
- Large Storage Compartment under Helm Console
- Exterior Removable Carpet
- Stainless Bimini Top with EZ2CY and Strata Glass Enclosure
- Large Storage Compartments under Both Lounge Seating Areas

## Electrical System

---

- 10kW Kohler Generator with 490 Hours
- Three Stage Battery Charger
- 50 Amp 250 Volt Shore Power Cord -Retractable
- Max Power Bow Thruster
- 42,000 BTU Three Zone A/C
- 2 4D House Batteries and 6 Group 31 Batteries

## Engine Room

---

Equipped with the reliable Cummins 450 HP Diamond Series Engines, "Sea Scape" has been properly maintained by meticulous and knowledgeable owners who understand the importance of regular service. With only 535 hours on her engines.

- X-changer Oil Change System
- 1301 Automatic Fire Suppression System

## Decks

---

A wide molded in stairway on either side with high railings and well done non skid surface provides sure footing when walking on deck for access to the large sun lounge area, or the managing of lines. A fresh water wash down is located under the rope hatch, and foot controls for the windlass make for easy anchoring when on the bow.

Custom fender storage is provided forward where it is needed, and a remote control spotlight is located on the bow pulpit for optimal night time lighting. Located aft and accessed via a molded-in staircase with railing in the built in swim platform with swim ladder and dock side hook up for electric, fresh water, and cable TV service.

- Stainless Steel Bow Rail
- Custom Stainless Fender Storage
- Anchor Windlass with Foot Controls
- Industry Leading Non-Skid Surface
- Large Sunning Pad
- Fresh Water Wash Down on Bow and Swim Platform
- Wide Passage Ways for Easy Access to the Bow
- Dock Side Service Hook Ups
- Glendinning Cable Master with 50 Amp Service

## Aft Deck

---

- Full Size Wet bar
- Ice Maker
- Sink/Storage
- Free Standing Air Conditioner
- Hard Top Over Aft Deck

## Broker's Remarks

---

Boat Is Super Clean and Very Well Maintained. Located in the St. Pete and Easy to Show.

**All Offers Are Encouraged**

## Исключения

---

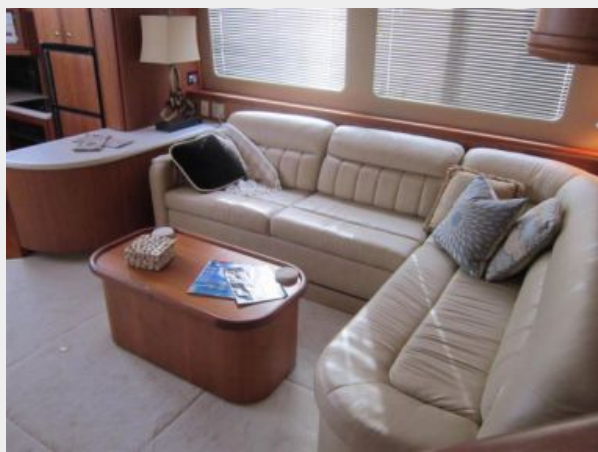
При продаже яхты исключаются личные вещи владельца.

## Отказ от ответственности

---

Компания предоставляет описание судна или яхты добросовестно, но не может гарантировать точность этой информации, а также не ручается за техническое состояние. Покупатель должен проинструктировать своих агентов или оценщиков исследовать представленную информацию более подробно, по собственному желанию. Продажа судна или яхты, изменение цены или снятие с продажи будет происходить без предварительного уведомления.

# ФОТОГРАФИИ



















# КОНТАКТЫ

---

Андрей Шестаков (Andrey Shestakov) – ведущий яхтенный брокер отдела продаж яхт и судов компании Shestakov Yacht Sales Inc. Официальный представитель Shestakov Yacht Sales Inc. для русскоговорящих клиентов в центральном офисе компании в Майами/Форт Лодердейл/Флорида/США.

## Контактная информация

---

Email: [andrey@shestakovyachtsales.com](mailto:andrey@shestakovyachtsales.com)

Web: [shestakovyachtsales.com](http://shestakovyachtsales.com)

## Телефоны

---

Краснодарский край: **+7(918)465-66-44**

США, Майами, Флорида: **+1(954)274-4435**

## Время работы

---

Понедельник – Суббота: **9:00 - 21:00**  
EDT

Воскресенье: **Закрито**

## Адрес

---



Harbour Towne Marina, 850 NE 3rd St,  
STE 213, Dania, FL 33004