

## ANITTA — COBAN SHIPYARDS



**Builder:** COBAN SHIPYARDS

**Year Built:** 2004

**Model:** Cruising Sailboat

**Price:** PRICE ON APPLICATION

**Location:** Turkey

**LOA:** 63' 3" (19.28m)

**Beam:** 16' 4" (4.98m)

**Min Draft:** 8' 5" (2.57m)

Our experienced yacht broker, Andrey Shestakov, will help you choose and buy a yacht that best suits your needs **ANITTA — COBAN SHIPYARDS** from our catalogue. Presently, at Shestakov Yacht Sales Inc., we have a wide variety of yachts available on our sale's list. We also work in close contact with all the big yacht manufacturers from all over the world.

If you would like to buy a yacht **ANITTA — COBAN SHIPYARDS** or would like help answering any questions concerning purchasing, selling or chartering a yacht, please call **+1(954)274-4435**

---

# TABLE OF CONTENTS

---

TABLE OF CONTENTS	2
SPECIFICATIONS	4
Overview	4
Basic Information	4
Dimensions	4
Speed, Capacities and Weight	4
Accommodations	4
Hull and Deck Information	4
Engine Information	5
DETAILED INFORMATION	6
Broker's Comments	6
Owner's Comments	6
Construction	6
Machinery	7
Electrical Systems	7
Plumbing Systems	8
Tankage	8
Navigation Equipment	9
Domestic Equipment	9
Accommodation	10
Deck Equipment	10
Exclusions	12
Disclaimer	12
PHOTOS	13
CONTACTS	15
Contact details	15
Telephones	15
Office hours	15

---

Address

15

---

# SPECIFICATIONS

---

## Overview

---

Good looking Bill Dixon design with captivating good looks and ample quarters to accommodate 8 souls. Of West with gleaming teak above and below decks.

## Basic Information

---

**Category:** Cruising Sailboat

**Model Year:** 2004

**Year Built:** 2004

**Country:** Turkey

## Dimensions

---

**LOA:** 63' 3" (19.28m)

**LWL:** 47' 6" (14.48m)

**Beam:** 16' 4" (4.98m)

**Min Draft:** 8' 5" (2.57m)

## Speed, Capacities and Weight

---

**Displacement:** 61729.43336 Pounds

**Water Capacity:** 264.172052 Gallons

**Holding Tank:** 158.5032312 Gallons

**Fuel Capacity:** 132.086026 Gallons

## Accommodations

---

**Total Cabins:** 4

**Total Berths:** 8

**Total Heads:** 4

## Hull and Deck Information

---

**Hull Material:** Wood

**Deck Material:** Teak

**Hull Designer:** Bill Dixon

---

## Engine Information

---

**Engines:** 1

**Manufacturer:** Yanmar

**Engine Type:** Inboard

**Fuel Type:** Diesel

---

# DETAILED INFORMATION

---

## Broker's Comments

---

ANNITA is a captivating yacht with sweet lines and classic good looks. She is in her original ownership and she has been professionally maintained from the beginning. She has been successful in a charter role and her interior layout lends itself to this sort of usage. However, she would be just as at home in a family, bluewater cruising role.

## Owner's Comments

---

ANNITA has been a superb friend and I feel safe and secure aboard her whatever the wind strength. Even in very difficult conditions with wind speeds in the 45 to 50 knot area, ANNITA behaves beautifully with a yankee and reefed mainsail. The deck arrangement works beautifully and there is a lot of volume – in the warmth of the Mediterranean we have had up to 8 people sleeping alfresco on deck. ANNITA has captivating good looks and attracts admiring glances wherever she goes.

## Construction

---

*RCD Status: The yacht will conform with the essential safety requirements of Directive 94/25EC (Recreational Craft Directive) and will be categorised A – “Ocean” if appropriate for a new owner if they are European based.*

### *Hull Construction:*

- West epoxy construction with a fin keel and spade hung rudder.

### *Deck Construction:*

- Cored epoxy deck with teak decking overlaid on the ring deck and in the cockpit. The exterior trim is executed in a combination of high gloss varnished teak and stainless steel.

### *Superstructure:*

- Of solid teak varnished to a high gloss yacht standard.

---

### *Keel & Rudder:*

- Cast lead ballast.
- GRP and epoxy rudder.
- Moderate fin keel.

## **Machinery**

---

### *Engine & Gearboxes:*

- 1 x Yanmar 240hp.

### *Maintenance & Performance:*

- Engine Hours: approx. 800 hours as at October 2014.
- *The systems aboard ANNITA have been maintained in accordance with the manufacturers' recommendations.*

### *Propulsion & Steering:*

- **Sidepower tunnel bowthruster.**
- **Emergency tiller.**

## **Electrical Systems**

---

### *Voltage Systems:*

- **24V and 220V system as well as 12V for for VHS and GSM charging.**

### *Battery Banks:*

- House banks, engine and generator start.

### *Battery Chargers:*

- **Battery charger. Redressor.**

- **Invertor 1500 amp.**

*Alternators:*

- 80 amp and 60 amp

*Generator:*

- **11kw Kohler Generator.**

*Shore Power:*

- 220v shore power with 220v ring main internally.

---

## **Plumbing Systems**

---

*Fresh Water & Water Heating System:*

- **220 volt immersion water heating system run from shore power or generator.**

*Bilge Pumps:*

- **Electrical and manual bilge pumps.**

---

## **Tankage**

---

*Fuel:*

- **Fuel Tank 500 litres approx.**

*Fresh water:*

- **Fresh Water 1,000 litres approx.**

*Grey/Blackwater holding tanks:*



- **Waste Water 600 litres approx. All black.**

---

## Navigation Equipment

---

- **Raymarine GPS.**
- **Chartplotter.**
- **VHF.**
- **Wind/Speed/Depth.**

---

## Domestic Equipment

---

### *General:*

- **Dish Washing machine Miele**

### *Galley:*

- **1 x Deep freeze. Isotherm 160 litres approx.**
- **1 x Refrigerator with 460 lt capacity. danfoss**
- **2-burner gas cooker.**
- **1 x ice maker**
- **1 x additional refrigerator isotherm 160 lts approx.**
- **1 x electrical oven 220 volt (small one)**

### *Heating & Ventilation:*

- **2 x 13000 BTU air conditioning system with outlets throughout the ship. However, this system has been unused for around 3 years and is not currently in service.**

### *Entertainment:*

- **CD/MP3 Player with 2 x water proof speakers in the cockpit and 2 x in the saloon.**

### *Lighting:*

- **Multi-reading light for all berths.**

## Accommodation

---

Summary of Accommodation:

- **All interior woodwork is in teak and iroco.**
- **All the teak is oiled.**
- **8 berths in 4 cabins (3 x cabins with 2 bunks, 1 x cabin with double berth).**
- **All cabins have their own WC and shower.**
- **Dining table with seating for 8.**
- **The deck saloon provides seating for 8.**
- **On the deck there is a shower facility as well.**

*Description of layout from forwards:*

From forward there are 2 double cabins. To port is an upper and lower berth cabin with its own wardrobe, together with separated heads and shower. To starboard there is a double berth again with a separate heads compartment. The main saloon has a galley to port with a linear galley to port with twin sinks, cooker and ample work surface. To port there is a large seating area with dining table and centre seating area amidships. Aft there are 2 further upper and lower cabins, each with their own heads compartments and ample stowage.

## Deck Equipment

---

*Rig:*

- **3 spreader Nordic Mast with rod rigging for performance cruising.**
- **2 x Spinnaker Poles for easy jibing.**
- **2 x Reckmann Roller Furlings**
- **Navtec Hydraulic Boom Vang and Backstay adjuster**
- **All halyards and sheets are Spectra.**
- **Mainsail has lazyjack and 2-reef fully battens.**
- **Blocks.**
- **Frederiksen Genoa and Mainsail Cars.**

*Winches:*

- **There are 5 x ST58 and 2 x ST78 Andersen Winches.**

*Sails:*

- **North Sails Main Sail - 85.6 m2, Spectra.**
- **North Yankee (125 %) - 96.7 m2, Spectra.**
- **North Inner Jib - 26.2 m2, Spectra.**
- **North Spinnaker - 267.2 m2.**

*General:*

- **Toerails.**
- **Pressure water pump on deck.**
- **Swimming ladder.**
- **Palet and snorkel set for 8.**
- **Brazier (charcoal grill).**
- **Cockpit table for 8.**

*Anchoring & Mooring Equipment:*

- **There is a 2000 W electric windlass with main anchor stainless steel 45kg ultra with 110m chain and a spare 40kg Danforth.**
- **Cleats.**

*Covers, Canvas & Cushions:*

- **Sunbathing cushions for 4**

*Tender & Outboard:*

- **Dinghy 4.4Hp outboard.**
- **Inflatable canoe for 2**

*Safety Equipment:*

- **Liferaft for 12.**
- **Lifejacket for 12.**

- **Horseshoes for 6**
- **Flares.**

*Fire-fighting equipment:*

- **Fire extinguishers in all the cabins, excluding the heads compartment.**
- **Fire blankets.**

---

## **Exclusions**

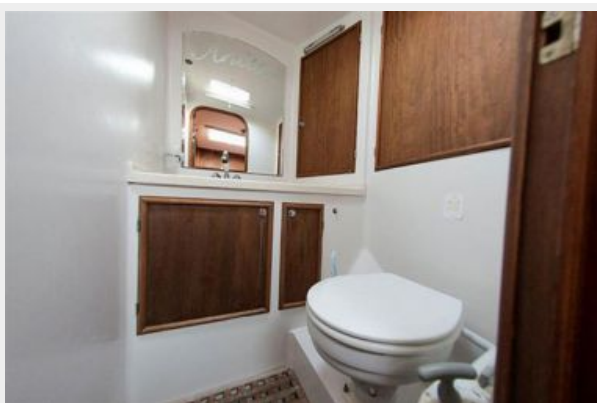
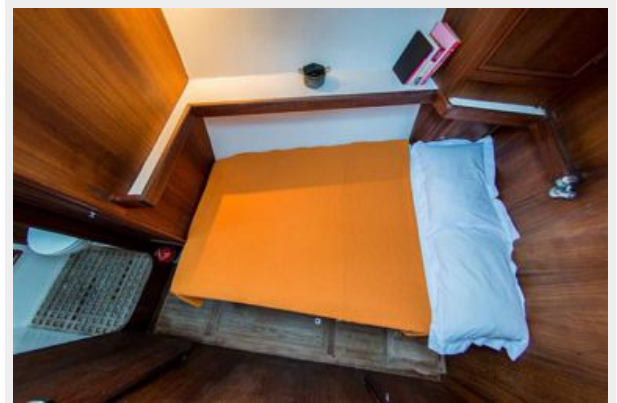
Owner's personal belongings.

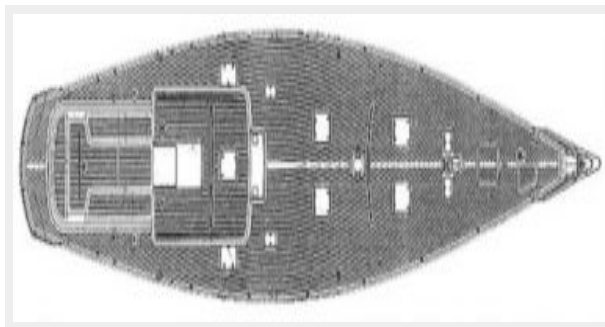
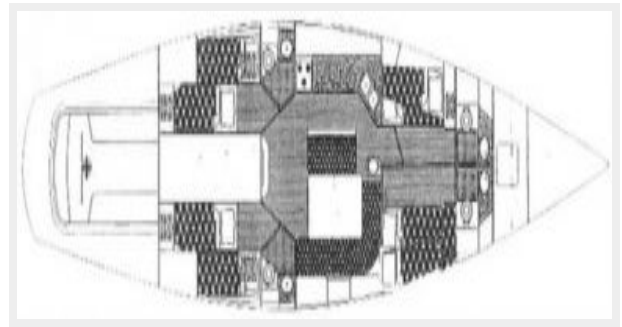
---

## **Disclaimer**

The Company offers the details of this vessel or yacht in good faith but cannot guarantee or warrant the accuracy of this information nor warrant the condition of the vessel. A buyer should instruct his representatives, agents, or his surveyors, to investigate such details as the buyer desires validated. This vessel or yacht is offered subject to prior sale, price change, or withdrawal without notice.

# PHOTOS





# CONTACTS

---

Andrey Shestakov, leading yacht broker of the sales department of Shestakov Yacht Sales Inc. Shestakov Yacht Sales Inc., the official representative of the Miami/Fort Lauderdale FL headquarters.

## Contact details

---

Email: [andrey@shestakovyachtsales.com](mailto:andrey@shestakovyachtsales.com)

Web: [shestakovyachtsales.com/en/](http://shestakovyachtsales.com/en/)

## Telephones

---

USA: +1(954)274-4435

## Office hours

---

Monday – Saturday: **9:00 - 21:00** EDT

Sunday: **closed**

## Address

---



Harbour Towne Marina, 850 NE 3rd St,  
STE 213, Dania, FL 33004