

ANITTA — COBAN SHIPYARDS



Судостроитель: COBAN SHIPYARDS

Год постройки: 2004

Модель: Крейсерская яхта

Цена: ЦЕНА ЯХТЫ ПО ЗАПРОСУ

Местонахождение: Turkey

Длина общая: 63' 3" (19.28m)

Ширина: 16' 4" (4.98m)

Мин. осадка: 8' 5" (2.57m)

Купить **ANITTA — COBAN SHIPYARDS** а также выбрать подходящую вам яхту из нашего каталога яхт вам поможет опытный яхтенный брокер Андрей Шестаков. На сегодняшний день компания Shestakov Yacht Sales Inc. имеет большое количество яхт в собственном списке продаж, а также тесно сотрудничает со всеми крупными яхтенными производителями по всему миру.

Для того чтобы купить яхту **ANITTA — COBAN SHIPYARDS** а также проконсультироваться по любому вопросу связанному с покупкой, продажей, чартером яхт позвоните по телефону **+7(918)465-66-44**.

ОГЛАВЛЕНИЕ

ОГЛАВЛЕНИЕ	2
ХАРАКТЕРИСТИКИ	4
Обзор	4
Основная информация	4
Размеры	4
Скорость, вместимость и масса	4
Размещение	4
Корпус и палуба	5
Информация о двигателе	5
ПОДРОБНОЕ ОПИСАНИЕ	6
Broker's Comments	6
Owner's Comments	6
Construction	6
Machinery	7
Electrical Systems	7
Plumbing Systems	8
Tankage	8
Navigation Equipment	9
Domestic Equipment	9
Accommodation	10
Deck Equipment	10
Исключения	12
Отказ от ответственности	12
ФОТОГРАФИИ	13
КОНТАКТЫ	15
Контактная информация	15
Телефоны	15
Время работы	15

Адрес

15

ХАРАКТЕРИСТИКИ

Обзор

Good looking Bill Dixon design with captivating good looks and ample quarters to accommodate 8 souls. Of West with gleaming teak above and below decks.

Основная информация

Тип судна: Крейсерская яхта

Модельный год: 2004

Год постройки: 2004

Страна: Turkey

Размеры

Длина общая: 63' 3" (19.28m)

Длина по ватерлинии: 47' 6" (14.48m)

Ширина: 16' 4" (4.98m)

Мин. осадка: 8' 5" (2.57m)

Скорость, вместимость и масса

Водоизмещение: 61729.43336 Pounds

Вместимость воды: 264.172052 Gallons

Вместимость сточного бака:
158.5032312 Gallons

Объем топливного бака: 132.086026
Gallons

Размещение

Всего кают: 4

Всего коек: 8

Всего ком. состава: 4

Корпус и палуба

Материал корпуса: Wood

Материал палубы: Teak

Дизайнер корпуса: Bill Dixon

Информация о двигателе

Двигатели: 1

Производитель: Yanmar

Тип двигателя: Inboard

Тип топлива: Diesel

ПОДРОБНОЕ ОПИСАНИЕ

Broker's Comments

ANNITA is a captivating yacht with sweet lines and classic good looks. She is in her original ownership and she has been professionally maintained from the beginning. She has been successful in a charter role and her interior layout lends itself to this sort of usage. However, she would be just as at home in a family, bluewater cruising role.

Owner's Comments

ANNITA has been a superb friend and I feel safe and secure aboard her whatever the wind strength. Even in very difficult conditions with wind speeds in the 45 to 50 knot area, ANNITA behaves beautifully with a yankee and reefed mainsail. The deck arrangement works beautifully and there is a lot of volume – in the warmth of the Mediterranean we have had up to 8 people sleeping alfresco on deck. ANNITA has captivating good looks and attracts admiring glances wherever she goes.

Construction

RCD Status: The yacht will conform with the essential safety requirements of Directive 94/25EC (Recreational Craft Directive) and will be categorised A – “Ocean” if appropriate for a new owner if they are European based.

Hull Construction:

- West epoxy construction with a fin keel and spade hung rudder.

Deck Construction:

- Cored epoxy deck with teak decking overlaid on the ring deck and in the cockpit. The exterior trim is executed in a combination of high gloss varnished teak and stainless steel.

Superstructure:

- Of solid teak varnished to a high gloss yacht standard.

Keel & Rudder:

- Cast lead ballast.
- GRP and epoxy rudder.
- Moderate fin keel.

Machinery

Engine & Gearboxes:

- 1 x Yanmar 240hp.

Maintenance & Performance:

- Engine Hours: approx. 800 hours as at October 2014.
- *The systems aboard ANNITA have been maintained in accordance with the manufacturers' recommendations.*

Propulsion & Steering:

- **Sidepower tunnel bowthruster.**
- **Emergency tiller.**

Electrical Systems

Voltage Systems:

- **24V and 220V system as well as 12V for for VHS and GSM charging.**

Battery Banks:

- House banks, engine and generator start.

Battery Chargers:

- **Battery charger. Redressor.**

- **Invertor 1500 amp.**

Alternators:

- 80 amp and 60 amp

Generator:

- **11kw Kohler Generator.**

Shore Power:

- 220v shore power with 220v ring main internally.

Plumbing Systems

Fresh Water & Water Heating System:

- **220 volt immersion water heating system run from shore power or generator.**

Bilge Pumps:

- **Electrical and manual bilge pumps.**

Tankage

Fuel:

- **Fuel Tank 500 litres approx.**

Fresh water:

- **Fresh Water 1,000 litres approx.**

Grey/Blackwater holding tanks:

- **Waste Water 600 litres approx. All black.**

Navigation Equipment

- **Raymarine GPS.**
- **Chartplotter.**
- **VHF.**
- **Wind/Speed/Depth.**

Domestic Equipment

General:

- **Dish Washing machine Miele**

Galley:

- **1 x Deep freeze. Isotherm 160 litres approx.**
- **1 x Refrigerator with 460 lt capacity. danfoss**
- **2-burner gas cooker.**
- **1 x ice maker**
- **1 x additional refrigerator isotherm 160 lts approx.**
- **1 x electrical oven 220 volt (small one)**

Heating & Ventilation:

- **2 x 13000 BTU air conditioning system with outlets throughout the ship. However, this system has been unused for around 3 years and is not currently in service.**

Entertainment:

- **CD/MP3 Player with 2 x water proof speakers in the cockpit and 2 x in the saloon.**

Lighting:

- **Multi-reading light for all berths.**

Accommodation

Summary of Accommodation:

- **All interior woodwork is in teak and iroco.**
- **All the teak is oiled.**
- **8 berths in 4 cabins (3 x cabins with 2 bunks, 1 x cabin with double berth).**
- **All cabins have their own WC and shower.**
- **Dining table with seating for 8.**
- **The deck saloon provides seating for 8.**
- **On the deck there is a shower facility as well.**

Description of layout from forwards:

From forward there are 2 double cabins. To port is an upper and lower berth cabin with its own wardrobe, together with separated heads and shower. To starboard there is a double berth again with a separate heads compartment. The main saloon has a galley to port with a linear galley to port with twin sinks, cooker and ample work surface. To port there is a large seating area with dining table and centre seating area amidships. Aft there are 2 further upper and lower cabins, each with their own heads compartments and ample stowage.

Deck Equipment

Rig:

- **3 spreader Nordic Mast with rod rigging for performance cruising.**
- **2 x Spinnaker Poles for easy jibing.**
- **2 x Reckmann Roller Furlings**
- **Navtec Hydraulic Boom Vang and Backstay adjuster**
- **All halyards and sheets are Spectra.**
- **Mainsail has lazyjack and 2-reef fully battens.**
- **Blocks.**
- **Frederiksen Genoa and Mainsail Cars.**

Winches:

- **There are 5 x ST58 and 2 x ST78 Andersen Winches.**

Sails:

- **North Sails Main Sail - 85.6 m2, Spectra.**
- **North Yankee (125 %) - 96.7 m2, Spectra.**
- **North Inner Jib - 26.2 m2, Spectra.**
- **North Spinnaker - 267.2 m2.**

General:

- **Toerails.**
- **Pressure water pump on deck.**
- **Swimming ladder.**
- **Palet and snorkel set for 8.**
- **Brazier (charcoal grill).**
- **Cockpit table for 8.**

Anchoring & Mooring Equipment:

- **There is a 2000 W electric windlass with main anchor stainless steel 45kg ultra with 110m chain and a spare 40kg Danforth.**
- **Cleats.**

Covers, Canvas & Cushions:

- **Sunbathing cushions for 4**

Tender & Outboard:

- **Dinghy 4.4Hp outboard.**
- **Inflatable canoe for 2**

Safety Equipment:

- **Liferaft for 12.**
- **Lifejacket for 12.**

- **Horseshoes for 6**
- **Flares.**

Fire-fighting equipment:

- **Fire extinguishers in all the cabins, excluding the heads compartment.**
- **Fire blankets.**

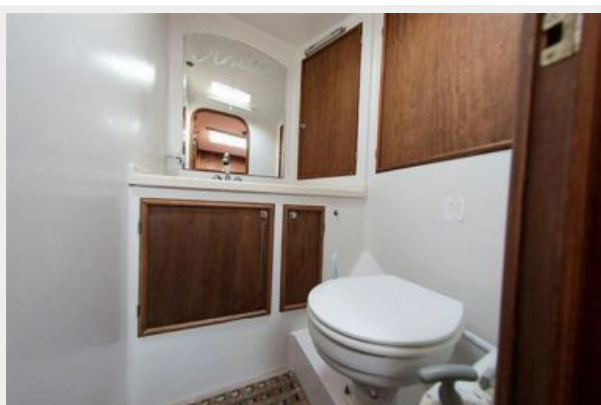
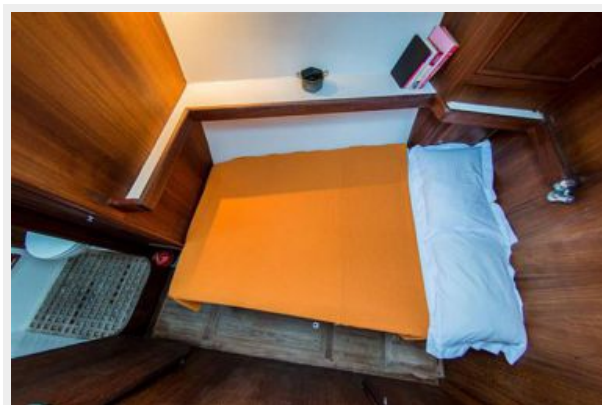
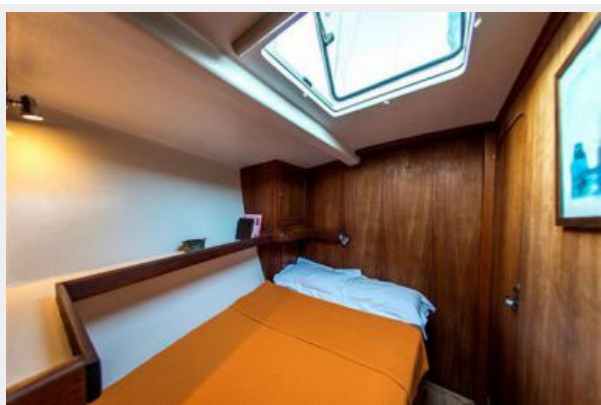
Исключения

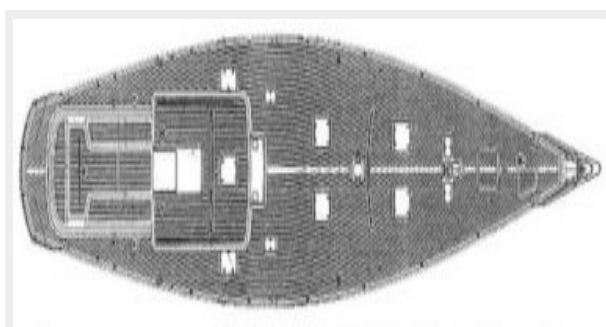
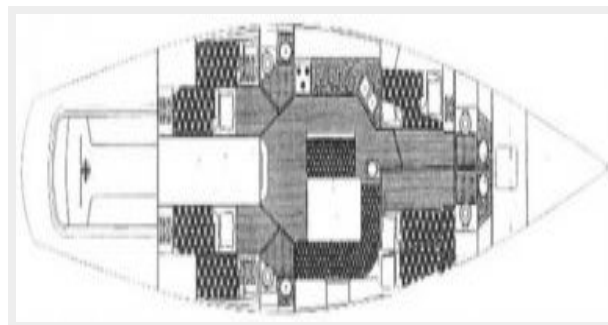
При продаже яхты исключаются личные вещи владельца.

Отказ от ответственности

Компания предоставляет описание судна или яхты добросовестно, но не может гарантировать точность этой информации, а также не ручается за техническое состояние. Покупатель должен проинструктировать своих агентов или оценщиков исследовать представленную информацию более подробно, по собственному желанию. Продажа судна или яхты, изменение цены или снятие с продажи будет происходить без предварительного уведомления.

ФОТОГРАФИИ





КОНТАКТЫ

Андрей Шестаков (Andrey Shestakov) – ведущий яхтенный брокер отдела продаж яхт и судов компании Shestakov Yacht Sales Inc. Официальный представитель Shestakov Yacht Sales Inc. для русскоговорящих клиентов в центральном офисе компании в Майами/Форт Лодердейл/Флорида/США.

Контактная информация

Email: andrey@shestakovyachtsales.com

Web: shestakovyachtsales.com

Телефоны

Краснодарский край: **+7(918)465-66-44**

США, Майами, Флорида: **+1(954)274-4435**

Время работы

Понедельник – Суббота: **9:00 - 21:00**
EDT

Воскресенье: **Закрето**

Адрес



Harbour Towne Marina, 850 NE 3rd St,
STE 213, Dania, FL 33004