

METOLIUS — ROYAL HUISMAN



Судостроитель: ROYAL HUISMAN

Год постройки: 1992

Модель: Sloop

Цена: **ЦЕНА ЯХТЫ ПО ЗАПРОСУ**

Местонахождение: Spain

Длина общая: 83' 11" (25.58m)

Ширина: 19' 11" (6.07m)

Мин. осадка: 10' 9" (3.28m)

Крейс. скорость: 10 Kts. (12 MPH)

Макс. скорость: 11 Kts. (13 MPH)

Купить **METOLIUS — ROYAL HUISMAN** а также выбрать подходящую вам яхту из нашего каталога яхт вам поможет опытный яхтенный брокер Андрей Шестаков. На сегодняшний день компания **Shestakov Yacht Sales Inc.** имеет большое количество яхт в собственном списке продаж, а также тесно сотрудничает со всеми крупными яхтенными производителями по всему миру.

Для того чтобы купить яхту **METOLIUS — ROYAL HUISMAN** а также проконсультироваться по любому вопросу связанному с покупкой, продажей, чартером яхт позвоните по телефону **+7(918)465-66-44**.

ОГЛАВЛЕНИЕ

ОГЛАВЛЕНИЕ	2
ХАРАКТЕРИСТИКИ	5
Обзор	5
Основная информация	5
Размеры	5
Скорость, вместимость и масса	6
Размещение	6
Корпус и палуба	6
Информация о двигателе	6
ПОДРОБНОЕ ОПИСАНИЕ	7
Vessel Overview/ Description	7
Accommodations	7
Deck Layout	8
Machinery	8
Electrical System	9
Ship's Systems	10
Communication Equipment	11
Office Equipment	12
Entertainment Systems	12
Navigation Equipment	13
Mast, Rigging & Sail Handling	14
Sails	15
Deck Equipment	15
Tender & Watersports	16
Safety & Security Equipment	17
Broker Comments	17
Исключения	18
Отказ от ответственности	18

ФОТОГРАФИИ	19
Port Profile	19
Anchorage in Shetlands	19
Sawyer Glacier on the Tracy	19
Forward on Deck	19
Forward Cockpit Table	19
Main Companionway	19
Main Salon Forward	20
Salon View Aft	20
Outboard Port	20
Galley	20
Galley	20
Owner Stateroom Aft	20
Owner Stateroom Forward	21
Owner's Head & Shower	21
Guest Stateroom	21
Second Guest Stateroom	21
Crew Cabin & Workshop	21
Pump Room	21
Electric Panel & Engine	22
Workshop & Foc'sle	22
Isle of Skye, Scotland	22
Ellis Island	22
Fall in Maine	22
Greece	22
Menorca, Spain	23
КОНТАКТЫ	24
Контактная информация	24
Телефоны	24

Время работы	24
Адрес	24

ХАРАКТЕРИСТИКИ

Обзор

METOLIUS is a true offshore voyager, with an easily driven hull form and a powerful sailplan engineered to be easily managed by minimal crew, including a Rondal hydraulic furling spar, headstay and staysail stay, hydraulic winches, a functional, simple deck layout, and a comfortable, well protected cockpit. Her interior is detailed in varnished teak with an ambiance that exudes elegant warmth with an uncanny functionality. The layout includes three staterooms, two heads with stall showers, separate crew quarters and head, all crafted to the highest Huisman standards. The overall arrangement is ideal for family living, offering absolute comfort and privacy in her functional cabins. With over 150,000 miles under her keel, she has always had benefit of exceptional preventative maintenance, and major refits in 2001, 2005, 2008, 2011 and 2012 with a comprehensive engine rebuild in 2013 and new hull paint in 2014! Simply stated, she's ready to go!

Основная информация

Тип судна: Sloop

Модельный год: 1992

Год постройки: 1992

Год обновления: 2012

Страна: Spain

Размеры

Длина общая: 83' 11" (25.58m)

Ширина: 19' 11" (6.07m)

Мин. осадка: 10' 9" (3.28m)

Скорость, вместимость и масса

Крейс. скорость: 10 Kts. (12 MPH)

Дальность на крейсерской скорости:
2200

Макс. скорость: 11 Kts. (13 MPH)

Чистый вес: 132000 Pounds

Вместимость воды: 396.258078 Gallons

Вместимость сточного бака: 52.8344104
Gallons

Объем топливного бака: 792.516156
Gallons

Размещение

Всего кают: 4

Спальные места: 8

Всего ком. состава: 3

Койки экипажа: 2

Корпус и палуба

Материал корпуса: Aluminum

Дизайнер корпуса: German Frers

Дизайнер экстерьера: German Frers

Дизайнер интерьера: Peter Beeldsnijder

Информация о двигателе

Производитель: MERCEDES

Тип топлива: Diesel

ПОДРОБНОЕ ОПИСАНИЕ

Vessel Overview/ Description

METOLIUS is a true offshore voyager, with an easily driven hull form and a powerful sailplan engineered to be easily managed by minimal crew, including a Rondal hydraulic furling spar, headstay and staysail stay, hydraulic winches, a functional, simple deck layout, and a comfortable, well protected cockpit. Her interior is detailed in varnished teak with an ambiance that exudes elegant warmth with an uncanny functionality. The layout includes three staterooms, two heads with stall showers, separate crew quarters and head, all crafted to the highest Huisman standards. The overall arrangement is ideal for family living, offering absolute comfort and privacy in her functional cabins. With over 150,000 miles under her keel, she has always had benefit of exceptional preventative maintenance, and major refits in 2001, 2005, 2008, 2011 and 2012 with a comprehensive engine rebuild in 2013 and new hull paint in 2014! Simply stated, she's ready to go!

Accommodations

The MAIN SALON aboard METOLIUS is very large with an open plan that enhances the sense of spaciousness. The teak inlaid dining table and "L" shaped settee area are to starboard, with two custom dining seats inboard. Outboard to port is a large and comfortable leather upholstered sofa, facing a hi/low cocktail/game table which, in the lower position, secures two custom leather upholstered teak stools. Aft in this area is another custom swivel seat. The main salon is truly a comfortable family living room. The NAVIGATION STATION adjoins the salon aft to port, with a bench seat that allows the navigator to face forward or aft. The aft area houses the electronics and communications equipment, with a work space below. The radar and computer are outboard, adjacent to a two-tier bookshelf, plus valence bookshelf above. When facing forward, the navigator sits at a large chart table/office desk, which offers chart storage, filing cabinets and additional storage drawers inboard. Immediately to starboard of the companionway is a GUEST STATEROOM, with over and under single berths and ample storage in drawers, cabinets and a large hanging locker. The SECOND GUEST STATEROOM is forward of the salon to port, also with two good size single berths, plenty of stowage and an opening hatch to the mid deck. The GUEST HEAD/day head, is aft of the stateroom and complete with a full stall shower. The OWNER's STATEROOM is across to starboard, with a double berth, ample stowage in drawers and lockers, writing desk and foldaway seat, and an ensuite head with stall shower. CREW QUARTERS for two, are forward of the mast, with over and under single berths and ample stowage in lockers and drawers to port, and an ensuite head and shower compartment to starboard. Crew have their own access to deck through the fore hatch in the foc'sle workshop. Immediately forward of the crew quarters is a large WORKSHOP/STORAGE AREA, with separate Miele washer and drier, custom fabricated SS freezer, workbench with detachable vice and ample custom storage for hand and power tools. Also in this area, just below the large foredeck hatch, is a custom sail stowage cabinet for the asymmetrical spinnaker. Adjoining the main salon, forward to starboard is the well-appointed GALLEY, which has an abundance of

cabinet and counter space, beautifully detailed. Refrigeration is a custom fabricated RHS cold bank refrigerator and freezer system, with refrigerator in the galley, drinks refrigeration in the adjoining area of the salon and a separate deep freeze forward. The propane stove is a Huisman modified Alpes Mariner, with solenoid shut off and gas alarm. In addition, there are deep ss sinks, custom fixtures, a Miele microwave oven and abundant storage space. Forward in the crew area, Miele washer and dryer (2001). The engine is on centerline, cleverly installed below a lead sound-shielded teak engine cover that retracts electrically. Outboard to port, forward of the salon is a full pump room, where much of the engineering and mechanical equipment aboard is installed, along with the 100 lt diesel day tank. Behind a hatch, aft at the companionway, is a full wet locker, with access to additional machinery farther aft.

Deck Layout

The deck layout aboard METOLIUS was engineered with safety, seamanship and ease of sailhandling as primary requirements. The aft cockpit is deep and well protected by the dodger, with seating port and starboard, as well as aft of the 70" SS destroyer wheel. The binnacle houses both the steering compass and waterproof touch screen for the navigation software as well as the external VHF handset. Lifting the cockpit seats provides access to general storage areas, two liferafts and an EPIRB. There is a custom teak dining table that fits in the cockpit sole, which can be in place while sailing. Removable foot braces fit in both cockpits. Running backstay winches are fitted on the cockpit coaming, within easy reach of the helmsman and the engine control panel is to starboard with two deck mounted foot switches for the bowthruster. A well-protected working cockpit aft of the mast has Lewmar 1100 SST/hydro primary winches and Lewmar 900 SST/hydro secondary winches. Immediately aft of this cockpit are four flush mounted hatches with four sensibly sized dorade vents, protected by stainless steel grab rails. The stainless steel traveler is located ju forward of the dodger, well positioned for proper leverage for the main sheet, while keeping the sheet clear of both cockpits. Just aft of the mast, there is a grouping of Rondal stainless steel SW 2000 and Lewmar 650 SST/hydro winches that operate all halyards. Also in this area are two Lewmar 46 AST, mast mounted pole lift winches for the aluminum spinnaker pole that is housed on the forward side of the mast. The clean foredeck has a low bulwark that affords protection with the only protrusions being the Steen windlass and a Dorade vent immediately forward of the inner forestay. To starboard of the foredeck hatch are two, in deck storage lockers with flush, teak laid hatches, one for the outboard engines and fuel tanks, the other for two aluminum propane tanks. The outboard locker has a bilge pump and extractor fan; the gas locker drains directly overboard. The recessed foredeck hatch is sealed by a compressed air activated gasket and immediately aft of this are two recessed hatches.

Machinery

Main

Engine Mercedes MTU 200 hp inline, six cylinder, naturally aspirated marine diesel. W 5 top

end overhaul by Certified MTU Technicians, Palma, 2013

Engine

Hours 10,250 (October 2013)

Speed 10 Knots cruising

Range 2,200 NM

Auxiliary PTO

Continuous hydraulic PTO generates power to supply the bow thruster, Watermaker and refrigeration systems. Belt driven Steimel water pump for engine raw water circulation and emergency bilge pumping.

Propeller Shaft Hundested two piece shaft with flexible coupling (serviced 2009). Hollex drip free stern seal and P bracket with water lubricated cutlass bearing.

Propeller Hundested 3 blade 900 mm variable pitch propeller, adjusted by electric motor (serviced 2009)

```
.telerik-reTable-1 { border-width: 0px; border-style: none; border-collapse: collapse; font-family:
Tahoma; } .telerik-reTable-1 tr.telerik-reTableHeaderRow-1 { margin: 10px; padding: 10px; color:
#3F4D6B; background: #D6E8FF; text-align: left; font-size: 10pt; font-style: normal; font-family:
Tahoma; text-transform: capitalize; font-weight: bold; border-spacing: 10px; line-height: 14pt;
vertical-align: top; } .telerik-reTable-1 td.telerik-reTableHeaderFirstCol-1 { padding: 0in 5.4pt 0in
5.4pt; color: #3a4663; line-height: 14pt; } .telerik-reTable-1 td.telerik-reTableHeaderLastCol-1 {
padding: 0in 5.4pt 0in 5.4pt; color: #3a4663; line-height: 14pt; } .telerik-reTable-1 td.telerik-
reTableHeaderOddCol-1 { padding: 0in 5.4pt 0in 5.4pt; color: #3a4663; line-height: 14pt; }
.telerik-reTable-1 td.telerik-reTableHeaderEvenCol-1 { padding: 0in 5.4pt 0in 5.4pt; color:
#3a4663; line-height: 14pt; } .telerik-reTable-1 tr.telerik-reTableOddRow-1 { color: #666666;
background-color: #F2F3F4; font-size: 10pt; vertical-align: top; } .telerik-reTable-1 tr.telerik-
reTableEvenRow-1 { color: #666666; background-color: #E7EBF7; font-size: 10pt; vertical-align:
top; } .telerik-reTable-1 td.telerik-reTableFirstCol-1 { padding: 0in 5.4pt 0in 5.4pt; } .telerik-
reTable-1 td.telerik-reTableLastCol-1 { padding: 0in 5.4pt 0in 5.4pt; } .telerik-reTable-1 td.telerik-
reTableOddCol-1 { padding: 0in 5.4pt 0in 5.4pt; } .telerik-reTable-1 td.telerik-reTableEvenCol-1 {
padding: 0in 5.4pt 0in 5.4pt; } .telerik-reTable-1 tr.telerik-reTableFooterRow-1 { background-color:
#D6E8FF; color: #4A5A80; font-weight: 500; font-size: 10pt; font-family: Tahoma; line-height:
11pt; } .telerik-reTable-1 td.telerik-reTableFooterFirstCol-1 { padding: 0in 5.4pt 0in 5.4pt; border-
top: solid gray 1.0pt; text-align: left; } .telerik-reTable-1 td.telerik-reTableFooterLastCol-1 {
padding: 0in 5.4pt 0in 5.4pt; border-top: solid gray 1.0pt; text-align: left; } .telerik-reTable-1
td.telerik-reTableFooterOddCol-1 { padding: 0in 5.4pt 0in 5.4pt; text-align: left; border-top: solid
gray 1.0pt; } .telerik-reTable-1 td.telerik-reTableFooterEvenCol-1 { padding: 0in 5.4pt 0in 5.4pt;
text-align: left; border-top: solid gray 1.0pt; }
```

Electrical System

Generators Northern Lights Luger 20 KWH, 2005, fully serviced 2011 Generator hours; 4550 (October 2013)

230 V 50 Hz single-phase three-wire system powered by diesel generator shore

Electricity	power.Two DC/AC inverters generate a continuous supply of AC power to the appliances and outlets
Shore Power	220V / 50 Hz or 110V / 60 Hz input via shore power isolation transformer
Inverter	(2) Victron Energy Multiplus DC/AC inverters;24V, 3000 VA, 70 AMP, 2010
Batteries	(2) Sonnenschein AGM 12V 140 ah main engine start batteries, 2013. (2) Tudor Maintenance free 12V 135 ah generator start batteries (12) Mastervolt MVSV 1650, 1650 ah, 2V, deep cycle gel cell service Batteries, 2009. (2) Victron Skylla – TG 24V 100 amp service battery charters. Custom Ricom battery monitoring system with panel readout and alarms. Emergency link switch between main engine and generator start batteries. Earth fault detection circuit on each battery bank.

Ship's Systems

Steering System	Single destroyer type wheel with 1800 mm diameter linked to rudder by 1” stainlesssteel chain and 7 x 19 wire steering cables. Gear ratio of 2:5:1 and swing of 35 degrees port and starboard. Hydraulic clutch disengages wheel when autopilot is engaged.
Rudder	Foil shape spade rudder, shaped on aluminum frames with aluminum skins and Solid aluminum rudder stock. Twin rudder bearings are lubricated by grease Fittings.
Bow Thruster	Hundested 35 hp hydraulic Retractable bow thruster, serviced 2009
Fuel Filters	Racor 2010 series; (2) Engine filters in Duplex arrangement. (1) Generator filter.
Fire/Anchor Wash Pump	Spec BADU 40-15 seawater pump with two deck hydrants
Bilge Pump	(1) G+R MV64. One additional rebuilt spare aboard in reserve Emergency Bilge Steimel water pump belt driven from main engine Pump Sewage Treatment 200 Liter holding tank. Electrical overboard pump with thru hull isolation valve. Medium & high level alarms.
Waste Pump	(2) G+R ECO MV44 to discharge black and grey tanks. Both rebuilt 2013. A rebuilt spare pump is kept onboard.
Heads	(3) Altena Waterflash electric toilets with freshwater flush. Forward head has option for salt water feed.
Air Conditioning	(3) Marine Air Systems, 2005 (2) Freestanding units in forepeak and master cabin (1) Indirect chilled water loop system in salon
Heating	Heating throughout the boat is provided by four independent sources. A hot water circulation system delivers heat to air handlers with independent temperature control in each cabin and the salon. Heat sources; (1) Webasto diesel fired system, (1) 220 V immersion heater, (1) engine jacket water cooling system. Finally, the three air conditioning units can be operated on

Water Makers reverse cycle delivering heat to the salon, master cabin and forepeak. HEM series 20, 5,500 liters per day. New membranes 2013.

```
.telerik-reTable-1 { border-width: 0px; border-style: none; border-collapse: collapse; font-family:
Tahoma; } .telerik-reTable-1 tr.telerik-reTableHeaderRow-1 { margin: 10px; padding: 10px; color:
#3F4D6B; background: #D6E8FF; text-align: left; font-size: 10pt; font-style: normal; font-family:
Tahoma; text-transform: capitalize; font-weight: bold; border-spacing: 10px; line-height: 14pt;
vertical-align: top; } .telerik-reTable-1 td.telerik-reTableHeaderFirstCol-1 { padding: 0in 5.4pt 0in
5.4pt; color: #3a4663; line-height: 14pt; } .telerik-reTable-1 td.telerik-reTableHeaderLastCol-1 {
padding: 0in 5.4pt 0in 5.4pt; color: #3a4663; line-height: 14pt; } .telerik-reTable-1 td.telerik-
reTableHeaderOddCol-1 { padding: 0in 5.4pt 0in 5.4pt; color: #3a4663; line-height: 14pt; }
.telerik-reTable-1 td.telerik-reTableHeaderEvenCol-1 { padding: 0in 5.4pt 0in 5.4pt; color:
#3a4663; line-height: 14pt; } .telerik-reTable-1 tr.telerik-reTableOddRow-1 { color: #666666;
background-color: #F2F3F4; font-size: 10pt; vertical-align: top; } .telerik-reTable-1 tr.telerik-
reTableEvenRow-1 { color: #666666; background-color: #E7EBF7; font-size: 10pt; vertical-align:
top; } .telerik-reTable-1 td.telerik-reTableFirstCol-1 { padding: 0in 5.4pt 0in 5.4pt; } .telerik-
reTable-1 td.telerik-reTableLastCol-1 { padding: 0in 5.4pt 0in 5.4pt; } .telerik-reTable-1 td.telerik-
reTableOddCol-1 { padding: 0in 5.4pt 0in 5.4pt; } .telerik-reTable-1 td.telerik-reTableEvenCol-1 {
padding: 0in 5.4pt 0in 5.4pt; } .telerik-reTable-1 tr.telerik-reTableFooterRow-1 { background-color:
#D6E8FF; color: #4A5A80; font-weight: 500; font-size: 10pt; font-family: Tahoma; line-height:
11pt; } .telerik-reTable-1 td.telerik-reTableFooterFirstCol-1 { padding: 0in 5.4pt 0in 5.4pt; border-
top: solid gray 1.0pt; text-align: left; } .telerik-reTable-1 td.telerik-reTableFooterLastCol-1 {
padding: 0in 5.4pt 0in 5.4pt; border-top: solid gray 1.0pt; text-align: left; } .telerik-reTable-1
td.telerik-reTableFooterOddCol-1 { padding: 0in 5.4pt 0in 5.4pt; text-align: left; border-top: solid
gray 1.0pt; } .telerik-reTable-1 td.telerik-reTableFooterEvenCol-1 { padding: 0in 5.4pt 0in 5.4pt;
text-align: left; border-top: solid gray 1.0pt; }
```

Communication Equipment

Satcom Thrane and Thrane Fleet 33 with telephone handset and data connection.

Satcom Sailor Satcom C with data connection

VHF Simrad R582 with second cockpit handset and data connection

SSB ICOM IC-M802 with removable antenna, 2011

```
.telerik-reTable-1 { border-width: 0px; border-style: none; border-collapse: collapse; font-family:
Tahoma; } .telerik-reTable-1 tr.telerik-reTableHeaderRow-1 { margin: 10px; padding: 10px; color:
#3F4D6B; background: #D6E8FF; text-align: left; font-size: 10pt; font-style: normal; font-family:
Tahoma; text-transform: capitalize; font-weight: bold; border-spacing: 10px; line-height: 14pt;
vertical-align: top; } .telerik-reTable-1 td.telerik-reTableHeaderFirstCol-1 { padding: 0in 5.4pt 0in
5.4pt; color: #3a4663; line-height: 14pt; } .telerik-reTable-1 td.telerik-reTableHeaderLastCol-1 {
padding: 0in 5.4pt 0in 5.4pt; color: #3a4663; line-height: 14pt; } .telerik-reTable-1 td.telerik-
reTableHeaderOddCol-1 { padding: 0in 5.4pt 0in 5.4pt; color: #3a4663; line-height: 14pt; }
.telerik-reTable-1 td.telerik-reTableHeaderEvenCol-1 { padding: 0in 5.4pt 0in 5.4pt; color:
#3a4663; line-height: 14pt; } .telerik-reTable-1 tr.telerik-reTableOddRow-1 { color: #666666;
background-color: #F2F3F4; font-size: 10pt; vertical-align: top; } .telerik-reTable-1 tr.telerik-
```

```
reTableEvenRow-1 { color: #666666; background-color: #E7EBF7; font-size: 10pt; vertical-align:
top; } .telerik-reTable-1 td.telerik-reTableFirstCol-1 { padding: 0in 5.4pt 0in 5.4pt; } .telerik-
reTable-1 td.telerik-reTableLastCol-1 { padding: 0in 5.4pt 0in 5.4pt; } .telerik-reTable-1 td.telerik-
reTableOddCol-1 { padding: 0in 5.4pt 0in 5.4pt; } .telerik-reTable-1 td.telerik-reTableEvenCol-1 {
padding: 0in 5.4pt 0in 5.4pt; } .telerik-reTable-1 tr.telerik-reTableFooterRow-1 { background-color:
#D6E8FF; color: #4A5A80; font-weight: 500; font-size: 10pt; font-family: Tahoma; line-height:
11pt; } .telerik-reTable-1 td.telerik-reTableFooterFirstCol-1 { padding: 0in 5.4pt 0in 5.4pt; border-
top: solid gray 1.0pt; text-align: left; } .telerik-reTable-1 td.telerik-reTableFooterLastCol-1 {
padding: 0in 5.4pt 0in 5.4pt; border-top: solid gray 1.0pt; text-align: left; } .telerik-reTable-1
td.telerik-reTableFooterOddCol-1 { padding: 0in 5.4pt 0in 5.4pt; text-align: left; border-top: solid
gray 1.0pt; } .telerik-reTable-1 td.telerik-reTableFooterEvenCol-1 { padding: 0in 5.4pt 0in 5.4pt;
text-align: left; border-top: solid gray 1.0pt; }
```

Office Equipment

Computers

Leviathan computer running Nobletec navigation and communication

Printer/Scanner/Fax HP Photosmart C4385 with wireless printing

```
.telerik-reTable-1 { border-width: 0px; border-style: none; border-collapse: collapse; font-family:
Tahoma; } .telerik-reTable-1 tr.telerik-reTableHeaderRow-1 { margin: 10px; padding: 10px; color:
#3F4D6B; background: #D6E8FF; text-align: left; font-size: 10pt; font-style: normal; font-family:
Tahoma; text-transform: capitalize; font-weight: bold; border-spacing: 10px; line-height: 14pt;
vertical-align: top; } .telerik-reTable-1 td.telerik-reTableHeaderFirstCol-1 { padding: 0in 5.4pt 0in
5.4pt; color: #3a4663; line-height: 14pt; } .telerik-reTable-1 td.telerik-reTableHeaderLastCol-1 {
padding: 0in 5.4pt 0in 5.4pt; color: #3a4663; line-height: 14pt; } .telerik-reTable-1 td.telerik-
reTableHeaderOddCol-1 { padding: 0in 5.4pt 0in 5.4pt; color: #3a4663; line-height: 14pt; }
.telerik-reTable-1 td.telerik-reTableHeaderEvenCol-1 { padding: 0in 5.4pt 0in 5.4pt; color:
#3a4663; line-height: 14pt; } .telerik-reTable-1 tr.telerik-reTableOddRow-1 { color: #666666;
background-color: #F2F3F4; font-size: 10pt; vertical-align: top; } .telerik-reTable-1 tr.telerik-
reTableEvenRow-1 { color: #666666; background-color: #E7EBF7; font-size: 10pt; vertical-align:
top; } .telerik-reTable-1 td.telerik-reTableFirstCol-1 { padding: 0in 5.4pt 0in 5.4pt; } .telerik-
reTable-1 td.telerik-reTableLastCol-1 { padding: 0in 5.4pt 0in 5.4pt; } .telerik-reTable-1 td.telerik-
reTableOddCol-1 { padding: 0in 5.4pt 0in 5.4pt; } .telerik-reTable-1 td.telerik-reTableEvenCol-1 {
padding: 0in 5.4pt 0in 5.4pt; } .telerik-reTable-1 tr.telerik-reTableFooterRow-1 { background-color:
#D6E8FF; color: #4A5A80; font-weight: 500; font-size: 10pt; font-family: Tahoma; line-height:
11pt; } .telerik-reTable-1 td.telerik-reTableFooterFirstCol-1 { padding: 0in 5.4pt 0in 5.4pt; border-
top: solid gray 1.0pt; text-align: left; } .telerik-reTable-1 td.telerik-reTableFooterLastCol-1 {
padding: 0in 5.4pt 0in 5.4pt; border-top: solid gray 1.0pt; text-align: left; } .telerik-reTable-1
td.telerik-reTableFooterOddCol-1 { padding: 0in 5.4pt 0in 5.4pt; text-align: left; border-top: solid
gray 1.0pt; } .telerik-reTable-1 td.telerik-reTableFooterEvenCol-1 { padding: 0in 5.4pt 0in 5.4pt;
text-align: left; border-top: solid gray 1.0pt; }
```

Entertainment Systems

Audio System Panasonic simplifier with KEF 5.1 speaker system in main salon. Apple iTunes, airplay and Apple TV connected to this system. Removable Bose deck speakers.

Televisions Sharp LCD Aquos 37" with HDMI, Apple TV

Satellite Televisions Seatel TVatSea, 18" dome with Sky (UK) & DTV (USA) decoders

Video

Recorders & Players Panasonic home theatre system with DVD player and 5.1 surround sound.

Entertainment Apple mac mini with connection to TV and Wi-Fi

Internet 3g data modem and wave Wi-Fi rogue antenna connected to internal Wi-Fi network with (3) Apple airport express serving salon and cabins.

```
.telerik-reTable-1 { border-width: 0px; border-style: none; border-collapse: collapse; font-family:
Tahoma; } .telerik-reTable-1 tr.telerik-reTableHeaderRow-1 { margin: 10px; padding: 10px; color:
#3F4D6B; background: #D6E8FF; text-align: left; font-size: 10pt; font-style: normal; font-family:
Tahoma; text-transform: capitalize; font-weight: bold; border-spacing: 10px; line-height: 14pt;
vertical-align: top; } .telerik-reTable-1 td.telerik-reTableHeaderFirstCol-1 { padding: 0in 5.4pt 0in
5.4pt; color: #3a4663; line-height: 14pt; } .telerik-reTable-1 td.telerik-reTableHeaderLastCol-1 {
padding: 0in 5.4pt 0in 5.4pt; color: #3a4663; line-height: 14pt; } .telerik-reTable-1 td.telerik-
reTableHeaderOddCol-1 { padding: 0in 5.4pt 0in 5.4pt; color: #3a4663; line-height: 14pt; }
.telerik-reTable-1 td.telerik-reTableHeaderEvenCol-1 { padding: 0in 5.4pt 0in 5.4pt; color:
#3a4663; line-height: 14pt; } .telerik-reTable-1 tr.telerik-reTableOddRow-1 { color: #666666;
background-color: #F2F3F4; font-size: 10pt; vertical-align: top; } .telerik-reTable-1 tr.telerik-
reTableEvenRow-1 { color: #666666; background-color: #E7EBF7; font-size: 10pt; vertical-align:
top; } .telerik-reTable-1 td.telerik-reTableFirstCol-1 { padding: 0in 5.4pt 0in 5.4pt; } .telerik-
reTable-1 td.telerik-reTableLastCol-1 { padding: 0in 5.4pt 0in 5.4pt; } .telerik-reTable-1 td.telerik-
reTableOddCol-1 { padding: 0in 5.4pt 0in 5.4pt; } .telerik-reTable-1 td.telerik-reTableEvenCol-1 {
padding: 0in 5.4pt 0in 5.4pt; } .telerik-reTable-1 tr.telerik-reTableFooterRow-1 { background-color:
#D6E8FF; color: #4A5A80; font-weight: 500; font-size: 10pt; font-family: Tahoma; line-height:
11pt; } .telerik-reTable-1 td.telerik-reTableFooterFirstCol-1 { padding: 0in 5.4pt 0in 5.4pt; border-
top: solid gray 1.0pt; text-align: left; } .telerik-reTable-1 td.telerik-reTableFooterLastCol-1 {
padding: 0in 5.4pt 0in 5.4pt; border-top: solid gray 1.0pt; text-align: left; } .telerik-reTable-1
td.telerik-reTableFooterOddCol-1 { padding: 0in 5.4pt 0in 5.4pt; text-align: left; border-top: solid
gray 1.0pt; } .telerik-reTable-1 td.telerik-reTableFooterEvenCol-1 { padding: 0in 5.4pt 0in 5.4pt;
text-align: left; border-top: solid gray 1.0pt; }
```

Navigation Equipment

AIS Furuno FA-150 Universal AIS transceiver with NMEA output, 2005

Navigation Software Nobletec Admiral with expansive collection of digital charts: NW Europe, Mediterranean, Caribbean, USA, Atlantic Islands.

Autopilot	(2) Simrad AP26 control heads including separate processors and control panels, for redundancy. Segatronic hydraulic power pack with (2) RexRoth rams. Complete overhaul and rebuild 2013.
Gyro	Compass B + G Super Halcyon III
Magnetic Compass	Danforth Constellation, 150 mm diameter backlit steering compass in binnacle
Radars	(2) Furuno RDP-149 chart plotter / radar display. (1) in removable mount in steering cockpit, (1) in custom cabinet in navigation area. Mast mounted 24"closed array.
GPS	(2) Magnavox MX200gps Navtex Navtex Nav6 electronic display
Sailing Instruments	Brookes & Gatehouse Hydra 2000 system with comprehensive 20/20 layout. (9) displays on deck in steering and sailing cockpits. (4) in navigation area, (4) Hercules 690 multi display being one in each cabin.
Computer	(1) 24V Leviathan marine computer with EIZO Flex Scan LCD color monitor running Windows XP with full NMEA input from AIS, B&G, GPS, etc.. This computer also is used to access the Fleet 33 and satcom C data connections.
Barometer	(2) barometers; (1) electronic weather station with exterior probe, (1) Schatz hermetic type with matching ship's clock.

Mast, Rigging & Sail Handling

Mast	Triple spreader Rondal Hydrofurl aluminum mast and boom, with Navtec rod standingrigging (2009) and Hydrofurl headstay & staysail stay.
Boom	Rondal, aluminum with integrated boom preventer
Rigging Hydraulics	Rondal type 90 hydraulic boomvang and backstay adjuster with two-functionpanel.
Bowsprit	Removable, un-stayed 2m carbon bowsprit for Asymmetric spinnaker
Winches	(10) Lewmar hydraulic deck winches, with custom DC powerpacks.
Rig Measurements	I = 31.5m,P = 28.8m,E = 9.4m,J = 9.1m

```
.telerik-reTable-1 { border-width: 0px; border-style: none; border-collapse: collapse; font-family:
Tahoma; } .telerik-reTable-1 tr.telerik-reTableHeaderRow-1 { margin: 10px; padding: 10px; color:
#3F4D6B; background: #D6E8FF; text-align: left; font-size: 10pt; font-style: normal; font-family:
Tahoma; text-transform: capitalize; font-weight: bold; border-spacing: 10px; line-height: 14pt;
vertical-align: top; } .telerik-reTable-1 td.telerik-reTableHeaderFirstCol-1 { padding: 0in 5.4pt 0in
5.4pt; color: #3a4663; line-height: 14pt; } .telerik-reTable-1 td.telerik-reTableHeaderLastCol-1 {
padding: 0in 5.4pt 0in 5.4pt; color: #3a4663; line-height: 14pt; } .telerik-reTable-1 td.telerik-
reTableHeaderOddCol-1 { padding: 0in 5.4pt 0in 5.4pt; color: #3a4663; line-height: 14pt; }
.telerik-reTable-1 td.telerik-reTableHeaderEvenCol-1 { padding: 0in 5.4pt 0in 5.4pt; color:
#3a4663; line-height: 14pt; } .telerik-reTable-1 tr.telerik-reTableOddRow-1 { color: #666666;
```

```
background-color: #F2F3F4; font-size: 10pt; vertical-align: top; } .telerik-reTable-1 tr.telerik-
reTableEvenRow-1 { color: #666666; background-color: #E7EBF7; font-size: 10pt; vertical-align:
top; } .telerik-reTable-1 td.telerik-reTableFirstCol-1 { padding: 0in 5.4pt 0in 5.4pt; } .telerik-
reTable-1 td.telerik-reTableLastCol-1 { padding: 0in 5.4pt 0in 5.4pt; } .telerik-reTable-1 td.telerik-
reTableOddCol-1 { padding: 0in 5.4pt 0in 5.4pt; } .telerik-reTable-1 td.telerik-reTableEvenCol-1 {
padding: 0in 5.4pt 0in 5.4pt; } .telerik-reTable-1 tr.telerik-reTableFooterRow-1 { background-color:
#D6E8FF; color: #4A5A80; font-weight: 500; font-size: 10pt; font-family: Tahoma; line-height:
11pt; } .telerik-reTable-1 td.telerik-reTableFooterFirstCol-1 { padding: 0in 5.4pt 0in 5.4pt; border-
top: solid gray 1.0pt; text-align: left; } .telerik-reTable-1 td.telerik-reTableFooterLastCol-1 {
padding: 0in 5.4pt 0in 5.4pt; border-top: solid gray 1.0pt; text-align: left; } .telerik-reTable-1
td.telerik-reTableFooterOddCol-1 { padding: 0in 5.4pt 0in 5.4pt; text-align: left; border-top: solid
gray 1.0pt; } .telerik-reTable-1 td.telerik-reTableFooterEvenCol-1 { padding: 0in 5.4pt 0in 5.4pt;
text-align: left; border-top: solid gray 1.0pt; }
```

Sails

Mainsail	North 2005
Genoa	North 2005
Staysail	North 2005
Asymmetrical Spinnaker	North 2005

Deck Equipment

Anchor	Steen Type 23.06 horizontal windlass with chain gypsy and warping drum Driven
Windlass	by 24V DC motor with foot switches & remote. Rebuilt 2009
Anchor & Chain	CQR 180 lb Galvanized anchor on bow roller 130M galvanized anchor chain (2) 100m/22mm nylon anchor rodes with 10m/13mm chain (2) folding aluminum Fortress anchors
Passarelle	Custom built folding carbon with handrail and case
Boarding Ladder	Custom Besenzoni aluminum and teak boarding ladder w/submersible extension For swimming. Attaches port and starboard amidships.
Deck Cushions	(2) sets of sunbrella covers for cockpit cushions, for both steering & sailing cockpits.
Docking	(7) inflatable fenders w/custom fleece covers (14) Black nylon docklines
Canvas	Full cockpit dodger Sun Awning

```
.telerik-reTable-1 { border-width: 0px; border-style: none; border-collapse: collapse; font-family:
Tahoma; } .telerik-reTable-1 tr.telerik-reTableHeaderRow-1 { margin: 10px; padding: 10px; color:
#3F4D6B; background: #D6E8FF; text-align: left; font-size: 10pt; font-style: normal; font-family:
Tahoma; text-transform: capitalize; font-weight: bold; border-spacing: 10px; line-height: 14pt;
```

```
vertical-align: top; } .telerik-reTable-1 td.telerik-reTableHeaderFirstCol-1 { padding: 0in 5.4pt 0in 5.4pt; color: #3a4663; line-height: 14pt; } .telerik-reTable-1 td.telerik-reTableHeaderLastCol-1 { padding: 0in 5.4pt 0in 5.4pt; color: #3a4663; line-height: 14pt; } .telerik-reTable-1 td.telerik-reTableHeaderOddCol-1 { padding: 0in 5.4pt 0in 5.4pt; color: #3a4663; line-height: 14pt; } .telerik-reTable-1 td.telerik-reTableHeaderEvenCol-1 { padding: 0in 5.4pt 0in 5.4pt; color: #3a4663; line-height: 14pt; } .telerik-reTable-1 tr.telerik-reTableOddRow-1 { color: #666666; background-color: #F2F3F4; font-size: 10pt; vertical-align: top; } .telerik-reTable-1 tr.telerik-reTableEvenRow-1 { color: #666666; background-color: #E7EBF7; font-size: 10pt; vertical-align: top; } .telerik-reTable-1 td.telerik-reTableFirstCol-1 { padding: 0in 5.4pt 0in 5.4pt; } .telerik-reTable-1 td.telerik-reTableLastCol-1 { padding: 0in 5.4pt 0in 5.4pt; } .telerik-reTable-1 td.telerik-reTableOddCol-1 { padding: 0in 5.4pt 0in 5.4pt; } .telerik-reTable-1 td.telerik-reTableEvenCol-1 { padding: 0in 5.4pt 0in 5.4pt; } .telerik-reTable-1 tr.telerik-reTableFooterRow-1 { background-color: #D6E8FF; color: #4A5A80; font-weight: 500; font-size: 10pt; font-family: Tahoma; line-height: 11pt; } .telerik-reTable-1 td.telerik-reTableFooterFirstCol-1 { padding: 0in 5.4pt 0in 5.4pt; border-top: solid gray 1.0pt; text-align: left; } .telerik-reTable-1 td.telerik-reTableFooterLastCol-1 { padding: 0in 5.4pt 0in 5.4pt; border-top: solid gray 1.0pt; text-align: left; } .telerik-reTable-1 td.telerik-reTableFooterOddCol-1 { padding: 0in 5.4pt 0in 5.4pt; text-align: left; border-top: solid gray 1.0pt; } .telerik-reTable-1 td.telerik-reTableFooterEvenCol-1 { padding: 0in 5.4pt 0in 5.4pt; text-align: left; border-top: solid gray 1.0pt; }
```

Tender & Watersports

Ship's Tender	AB Inflatables Lamina AI-12, 12' Aluminum hull with Hypalon tubes (2011)
Outboard Engine	Dimensions; 3.66m LOA, 1.85m Beam
Diving Equipment	Honda 20hp 4 stroke (2012), full service (2013)
	Bauer Varius dive compressor, 220V, serviced (2013)

```
.telerik-reTable-1 { border-width: 0px; border-style: none; border-collapse: collapse; font-family: Tahoma; } .telerik-reTable-1 tr.telerik-reTableHeaderRow-1 { margin: 10px; padding: 10px; color: #3F4D6B; background: #D6E8FF; text-align: left; font-size: 10pt; font-style: normal; font-family: Tahoma; text-transform: capitalize; font-weight: bold; border-spacing: 10px; line-height: 14pt; vertical-align: top; } .telerik-reTable-1 td.telerik-reTableHeaderFirstCol-1 { padding: 0in 5.4pt 0in 5.4pt; color: #3a4663; line-height: 14pt; } .telerik-reTable-1 td.telerik-reTableHeaderLastCol-1 { padding: 0in 5.4pt 0in 5.4pt; color: #3a4663; line-height: 14pt; } .telerik-reTable-1 td.telerik-reTableHeaderOddCol-1 { padding: 0in 5.4pt 0in 5.4pt; color: #3a4663; line-height: 14pt; } .telerik-reTable-1 td.telerik-reTableHeaderEvenCol-1 { padding: 0in 5.4pt 0in 5.4pt; color: #3a4663; line-height: 14pt; } .telerik-reTable-1 tr.telerik-reTableOddRow-1 { color: #666666; background-color: #F2F3F4; font-size: 10pt; vertical-align: top; } .telerik-reTable-1 tr.telerik-reTableEvenRow-1 { color: #666666; background-color: #E7EBF7; font-size: 10pt; vertical-align: top; } .telerik-reTable-1 td.telerik-reTableFirstCol-1 { padding: 0in 5.4pt 0in 5.4pt; } .telerik-reTable-1 td.telerik-reTableLastCol-1 { padding: 0in 5.4pt 0in 5.4pt; } .telerik-reTable-1 td.telerik-reTableOddCol-1 { padding: 0in 5.4pt 0in 5.4pt; } .telerik-reTable-1 td.telerik-reTableEvenCol-1 {
```



```
padding: 0in 5.4pt 0in 5.4pt; } .telerik-reTable-1 tr.telerik-reTableFooterRow-1 { background-color: #D6E8FF; color: #4A5A80; font-weight: 500; font-size: 10pt; font-family: Tahoma; line-height: 11pt; } .telerik-reTable-1 td.telerik-reTableFooterFirstCol-1 { padding: 0in 5.4pt 0in 5.4pt; border-top: solid gray 1.0pt; text-align: left; } .telerik-reTable-1 td.telerik-reTableFooterLastCol-1 { padding: 0in 5.4pt 0in 5.4pt; border-top: solid gray 1.0pt; text-align: left; } .telerik-reTable-1 td.telerik-reTableFooterOddCol-1 { padding: 0in 5.4pt 0in 5.4pt; text-align: left; border-top: solid gray 1.0pt; } .telerik-reTable-1 td.telerik-reTableFooterEvenCol-1 { padding: 0in 5.4pt 0in 5.4pt; text-align: left; border-top: solid gray 1.0pt; }
```

Safety & Security Equipment

Safety (13) Suspenders Adult Universal 150N life jackets (2) Winslow 6 person life rafts with EPIRBs Jon-Buoy MK4, man overboard module EPIRB

Fire Fighting (2) Thorn FM 2000 CO2 semiautomatic fire fighting systems for engine and generator spaces BADU 40-15 seawater fire pump with two deck hydrants. CO2 fire extinguishers in each cabin space. Fire blanket in galley

```
.telerik-reTable-1 { border-width: 0px; border-style: none; border-collapse: collapse; font-family: Tahoma; } .telerik-reTable-1 tr.telerik-reTableHeaderRow-1 { margin: 10px; padding: 10px; color: #3F4D6B; background: #D6E8FF; text-align: left; font-size: 10pt; font-style: normal; font-family: Tahoma; text-transform: capitalize; font-weight: bold; border-spacing: 10px; line-height: 14pt; vertical-align: top; } .telerik-reTable-1 td.telerik-reTableHeaderFirstCol-1 { padding: 0in 5.4pt 0in 5.4pt; color: #3a4663; line-height: 14pt; } .telerik-reTable-1 td.telerik-reTableHeaderLastCol-1 { padding: 0in 5.4pt 0in 5.4pt; color: #3a4663; line-height: 14pt; } .telerik-reTable-1 td.telerik-reTableHeaderOddCol-1 { padding: 0in 5.4pt 0in 5.4pt; color: #3a4663; line-height: 14pt; } .telerik-reTable-1 td.telerik-reTableHeaderEvenCol-1 { padding: 0in 5.4pt 0in 5.4pt; color: #3a4663; line-height: 14pt; } .telerik-reTable-1 tr.telerik-reTableOddRow-1 { color: #666666; background-color: #F2F3F4; font-size: 10pt; vertical-align: top; } .telerik-reTable-1 tr.telerik-reTableEvenRow-1 { color: #666666; background-color: #E7EBF7; font-size: 10pt; vertical-align: top; } .telerik-reTable-1 td.telerik-reTableFirstCol-1 { padding: 0in 5.4pt 0in 5.4pt; } .telerik-reTable-1 td.telerik-reTableLastCol-1 { padding: 0in 5.4pt 0in 5.4pt; } .telerik-reTable-1 td.telerik-reTableOddCol-1 { padding: 0in 5.4pt 0in 5.4pt; } .telerik-reTable-1 td.telerik-reTableEvenCol-1 { padding: 0in 5.4pt 0in 5.4pt; } .telerik-reTable-1 tr.telerik-reTableFooterRow-1 { background-color: #D6E8FF; color: #4A5A80; font-weight: 500; font-size: 10pt; font-family: Tahoma; line-height: 11pt; } .telerik-reTable-1 td.telerik-reTableFooterFirstCol-1 { padding: 0in 5.4pt 0in 5.4pt; border-top: solid gray 1.0pt; text-align: left; } .telerik-reTable-1 td.telerik-reTableFooterLastCol-1 { padding: 0in 5.4pt 0in 5.4pt; border-top: solid gray 1.0pt; text-align: left; } .telerik-reTable-1 td.telerik-reTableFooterOddCol-1 { padding: 0in 5.4pt 0in 5.4pt; text-align: left; border-top: solid gray 1.0pt; } .telerik-reTable-1 td.telerik-reTableFooterEvenCol-1 { padding: 0in 5.4pt 0in 5.4pt; text-align: left; border-top: solid gray 1.0pt; }
```

Broker Comments

The design brief for METOLIUS demanded a high performance yacht that would handily cruise all oceans in all conditions, with a family crew who required all amenities of home while exploring all points of the globe. The collaboration of the Royal Huisman Shipyard, German Frers and interior design by Peter Beeldsnijder resulted in a yacht that fulfilled the design brief flawlessly, from the cold and boisterous North Sea, to ghosting through the doldrums, from the varied Alaska breezes to Cape Horn, the Antarctic, the wild Southern Ocean to the trade winds and Caribbean. Under her first ownership, the owner and family cruised over 90,000 miles aboard – at a combined average speed of over 9 knots! Under her present ownership, METOLIUS has cruised from Alaska to both sides of the Atlantic, throughout the Caribbean, Northern Europe and Scotland, to the Mediterranean. She is ready in all respects to continue her remarkable voyaging legacy.

Исключения

При продаже яхты исключаются личные вещи владельца.

Отказ от ответственности

Компания предоставляет описание судна или яхты добросовестно, но не может гарантировать точность этой информации, а также не ручается за техническое состояние. Покупатель должен проинструктировать своих агентов или оценщиков исследовать представленную информацию более подробно, по собственному желанию. Продажа судна или яхты, изменение цены или снятие с продажи будет происходить без предварительного уведомления.

ФОТОГРАФИИ

Port Profile



Anchorage in Shetlands



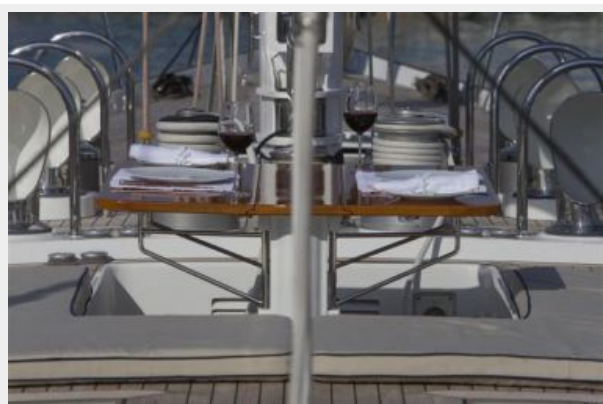
Sawyer Glacier on the Tracy



Forward on Deck



Forward Cockpit Table



Main Companionway



Main Salon Forward



Salon View Aft



Outboard Port



Galley



Galley



Owner Stateroom Aft



Owner Stateroom Forward



Owner's Head & Shower



Guest Stateroom



Second Guest Stateroom



Crew Cabin & Workshop



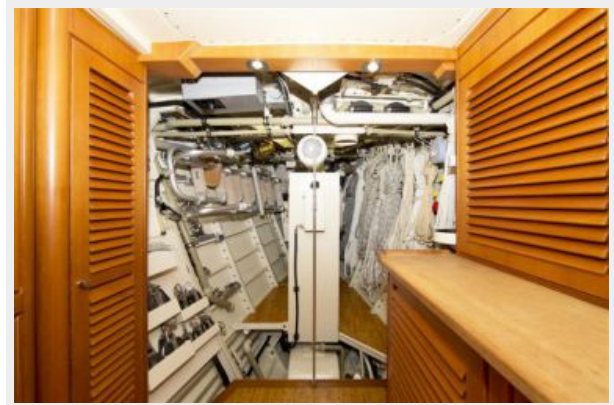
Pump Room



Electric Panel & Engine



Workshop & Foc'sle



Isle of Skye, Scotland



Ellis Island



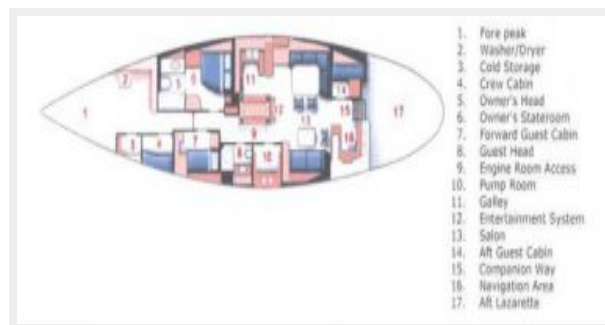
Fall in Maine



Greece



Menorca, Spain



КОНТАКТЫ

Андрей Шестаков (Andrey Shestakov) – ведущий яхтенный брокер отдела продаж яхт и судов компании Shestakov Yacht Sales Inc. Официальный представитель Shestakov Yacht Sales Inc. для русскоговорящих клиентов в центральном офисе компании в Майами/Форт Лодердейл/Флорида/США.

Контактная информация

Email: andrey@shestakovyachtsales.com

Web: shestakovyachtsales.com

Телефоны

Краснодарский край: **+7(918)465-66-44**

США, Майами, Флорида: **+1(954)274-4435**

Время работы

Понедельник – Суббота: **9:00 - 21:00**
EDT

Воскресенье: **Закрето**

Адрес



Harbour Towne Marina, 850 NE 3rd St,
STE 213, Dania, FL 33004