

NO NAME — CHRIS CRAFT



Builder: CHRIS CRAFT

Year Built: 1963

Model: Motor Yacht

Price: PRICE ON APPLICATION

Location: United States

LOA: 52' 0" (15.85m)

Beam: 14' 3" (4.34m)

Max Draft: 3' 8" (1.12m)

Cruise Speed: 12 Kts. (14 MPH)

Max Speed: 18 Kts. (21 MPH)

Our experienced yacht broker, Andrey Shestakov, will help you choose and buy a yacht that best suits your needs **NO NAME — CHRIS CRAFT** from our catalogue. Presently, at Shestakov Yacht Sales Inc., we have a wide variety of yachts available on our sale's list. We also work in close contact with all the big yacht manufacturers from all over the world.

If you would like to buy a yacht **NO NAME — CHRIS CRAFT** or would like help answering any questions concerning purchasing, selling or chartering a yacht, please call **+1(954)274-4435**

TABLE OF CONTENTS

TABLE OF CONTENTS	2
SPECIFICATIONS	5
Overview	5
Basic Information	5
Dimensions	5
Speed, Capacities and Weight	5
Accommodations	6
Hull and Deck Information	6
Engine Information	6
DETAILED INFORMATION	7
Accommodations	7
Galley	7
Electrical	7
Electronics & Navigation	7
Deck & Hull	8
Engine & Mechanical	8
Inclusions	8
Remarks	9
Exclusions	9
Exclusions	9
Disclaimer	9
PHOTOS	10
Freshwater Kept Undercover	10
Starboard Bow	10
Bow	10
Windlass & Anchor	10
Swim Platform	11
Tender	11

Canvas Enclosure	11
Flush Deck	11
Access to Flybridge	12
Flybridge	12
Wet Bar	12
Helm Seat	12
Helm Station	13
Radio	13
Access to Salon	13
Salon	13
Starboard Salon	14
Portside Salon	14
Galley Fridge	14
Galley	14
Forward Berth	15
Dinette	15
Forward Head	15
Forward Shower	15
Engine Access from Galley	16
Generator	16
Port Engine	16
Starboard Engine	16
Battery Box	17
Diesel Furnace	17
Compressor	17
Engine Access from Aft Cabins	17
Electrical Meters	18
Electrical Meters	18
Heater Controls	18

Breaker Boxes	18
Master Suite	18
Master Suite	18
Master Head	19
Master Suite Cabinets	19
Master Head	19
Master Head Shower	19
Guest Cabin	20
Radar	20
Stern View	20
CONTACTS	21
Contact details	21
Telephones	21
Office hours	21
Address	21

SPECIFICATIONS

Overview

\$10,000 price reduction. New to the market, this gorgeous 52 Chris Craft Flushdeck Motoryacht with upper helm flybridge will make the perfect liveaboard for Seattle or the Puget Sound and well under \$100,000. Powered by twin Detroit 6-71 diesels (low hour diesel engines - 3,000 hrs) and an 8 kw Onan generator that will provide ample 110v power underway or on the hook. Everything on this classic yacht is in excellent condition. ***Prime undercover slip on Lake Union with secured gated moorage. Slip with liveaboard status available on approval of marina manager.***

Basic Information

Category: Motor Yacht

Sub Category: Flushdeck

Model Year: 1963

Year Built: 1963

Country: United States

Vessel Top: Open

Fly Bridge: Yes

Cockpit: Yes

Dimensions

LOA: 52' 0" (15.85m)

Beam: 14' 3" (4.34m)

Max Draft: 3' 8" (1.12m)

Speed, Capacities and Weight

Cruise Speed: 12 Kts. (14 MPH)

Cruise Speed RPM: 1800 Kts.

Max Speed: 18 Kts. (21 MPH)

Max Speed RPM: 2100 Kts.

Displacement: 35271 Pounds

Water Capacity: 100 Gallons

Fuel Capacity: 400 Gallons

Accommodations

Total Cabins: 3

Sleeps: 10

Total Heads: 2

Hull and Deck Information

Hull Material: Wood

Hull Configuration: Modified V-Hull

Hull Designer: Chris Craft

Engine Information

Engines: 2

Manufacturer: Detroit Diesel

Model: 6071-M

Fuel Type: Diesel

DETAILED INFORMATION

Accommodations

The chain locker is forward followed by the V-berth with two bunk berths. Next aft is a head to port and a shower opposite. Steps lead up to the galley to port and a dinette settee is starboard.

More steps lead up to the salon and then down to the aft cabins with a guest stateroom with two single berths to port and a head and shower opposite. The master stateroom follows. Steps lead up from the salon to the lower helm station with an extended hardtop with canvas enclosure. A ladder leads to the flying bridge.

Galley

- Princess 3-burner AC range with oven
- Custom 115 VAC refrigerator/freezer (in galley)
- Custom 115 VAC freezer (in forward stateroom)
- Sharp Carousel microwave oven
- Espar D12L diesel fired forced air furnace

Electrical

- Onan 8KW, 8MCCK generator
- Batteries: (1) 8D-12VDC (2012), (2) 32 volt banks (2010); wet cell lead acid secured in wood boxes
- Battery Charger: Dytek 15 amp. E-class & Constavolt 30 amp. A5E3032
- AC System: 115 VAC system, shore power inlets port & starboard with weather covers, Square-D main and sub-panels, copper solid strand wiring, voltmeter, reverse polarity indicator
- DC System: 12VDC and 32 VDC systems, fuses and breakers, (2) Delco Remy alternators

Electronics & Navigation

- Rudder angle indicators
- Compasses: Danforth-White, and Saturn
- VHF Radios: Standard Horizon Quantum GX5000S, Coastal Navigator VHF 25
- CB Radios: Realistic TRC 452 & TRC 427
- Depth Sounder/Recorder: Raytheon DE725C
- Depth Sounder #2: Bendix
- Depth Sounder #3: Coastal Navigator DDS-99 and DDS-R

- Knot Meter/Knot Log: VDO Sumlog
- Loud Hailer: Ray Jefferson 310LH
- Radar: Simrad/Anritsu RA725US & RA772UA repeater
- Barometer and Clock: Emory & Douglas
- Clock: Chelsea
- Stereo: Kenwood KDC-138

Deck & Hull

- Anchor: Navy type anchor
- Chain and Rope: 200' of 3/8" chain plus line
- Windlass: Ideal windlass 12VDC
- Propellers: (2) bronze, 27 x 25, 4-blade
- Spare Propellers: Two onboard
- Struts: Bronze V-struts with two intermediate 1-struts
- Propeller Shafts: 1-3/4" diameter stainless steel
- Rudder: (2) bronze
- Trim Tabs: (2) dual ram
- Thru-Hulls: Bronze
- PFD's: (20) Type II and Type III
- Throwable: Rung buoy with floating line
- Fire Extinguishers: (1) ABC-1, (3) BC-1, inspection is current 2/2013
- Engine Room Fire Suppression: CO2 system, inspection is current 1/2013
- Sound Devices: Bell, portable air horn

Engine & Mechanical

- Water Heaters (2): Raritan 12 gallon, AC electric and engine heat
- Head/Sanitation: (1) Raritan electric head, (1) PAR electric head, Raritan LectraSan Type I MSD
- Potable Water Pump: Groco PM 32-VDC pump
- Fuel System: (2) Steel tanks, copper fuel lines, AC Delco T553 remote fuel filters
- Cabin Heat: Espar D12L diesel fired forced air furnace and built-in electric heaters in staterooms
- Bilge Pumps: (2) Rule 2000 with float switch, and PAR 12-VDC diaphragm type

Inclusions

Charts, fishing equipment including downriggers, 2 crab pots, 2 shrimp pots, various tools, spare parts.

Remarks

Recent \$10,000 price reduction. All offers considered. New to the market, this gorgeous 52' Chris Craft flush teak deck motoryacht with upper helm flybridge will make the perfect liveaboard for Seattle or Puget Sound and is priced well under \$100,000. Powered by twin Detroit 6-71 diesels (**low hours on diesel engines - 3,000 hrs**) and an 8 kw Onan generator will provide ample 110v power underway or on the hook.

Three staterooms with one queen in the master and four bunks with two heads (2 showers) make this a great family boat and luxurious cruiser. Its large salon with twin barrel chairs and a sleeper sofa allows sleeping for ten when using its convertible dinette.

The lower helm station is fully enclosed and has a large aft deck/entertaining area with wetbar, fridge and icemaker. Extra equipment includes: VHF radio, depth finder, 24 mile radar, GPS, Anchor windlass, Boston Whaler dinghy with oars & 9.9 hp Evinrude motor and custom electric davit, Espar Diesel Furnace, full aft deck enclosure and spare props and more.

Everything on this classic yacht is in excellent condition. Kept in a covered, freshwater berth. ***Prime undercover slip on Lake Union with secured gated moorage. Slip with liveaboard status available on approval of marina manager.***

Exclusions

All personal gear; loose items; galley gear; CD's; tools; supplies & items not specifically listed on equipment list specifications sheet.

Exclusions

Owner's personal belongings.

Disclaimer

The Company offers the details of this vessel or yacht in good faith but cannot guarantee or warrant the accuracy of this information nor warrant the condition of the vessel. A buyer should instruct his representatives, agents, or his surveyors, to investigate such details as the buyer desires validated. This vessel or yacht is offered subject to prior sale, price change, or withdrawal without notice.

PHOTOS

Freshwater Kept Undercover



Starboard Bow



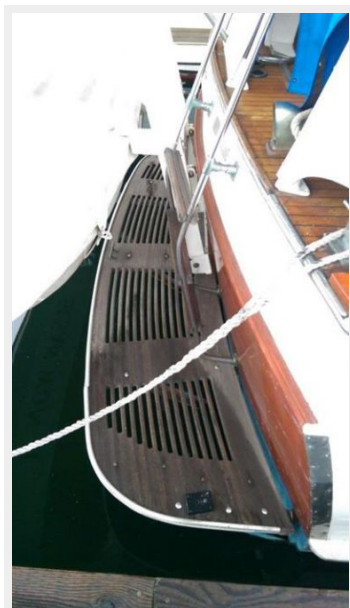
Windlass & Anchor



Bow



Swim Platform



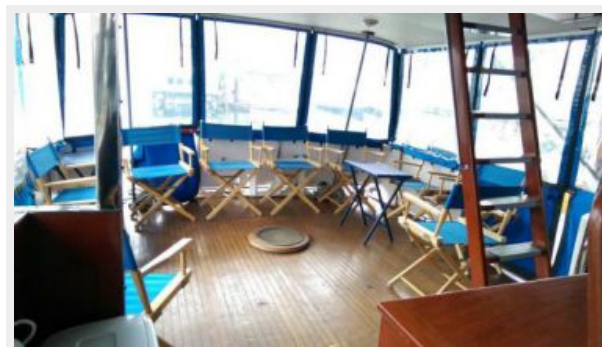
Tender



Canvas Enclosure



Flush Deck



Access to Flybridge



Flybridge



Wet Bar



Helm Seat



Helm Station



Radio



Access to Salon



Salon



Starboard Salon



Portside Salon



Galley



Galley Fridge



Dinette



Forward Berth



Forward Head



Forward Shower



Engine Access from Galley



Generator



Port Engine



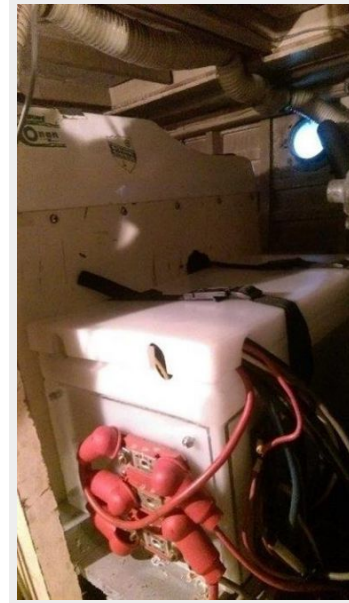
Starboard Engine



Diesel Furnace



Battery Box



Compressor



Engine Access from Aft Cabins



Electrical Meters



Electrical Meters



Heater Controls



Breaker Boxes



Master Suite



Master Suite



Master Suite Cabinets



Master Head



Master Head



Master Head Shower



Guest Cabin



Radar



Stern View



CONTACTS

Andrey Shestakov, leading yacht broker of the sales department of Shestakov Yacht Sales Inc. Shestakov Yacht Sales Inc., the official representative of the Miami/Fort Lauderdale FL headquarters.

Contact details

Email: andrey@shestakovyachtsales.com

Web: shestakovyachtsales.com/en/

Telephones

USA: +1(954)274-4435

Office hours

Monday – Saturday: **9:00 - 21:00** EDT

Sunday: **closed**

Address



Harbour Towne Marina, 850 NE 3rd St,
STE 213, Dania, FL 33004