

## SILVER WIND — ISA YACHTS



**Builder:** ISA YACHTS

**Year Built:** 2014

**Model:** High Performance

**Price:** PRICE ON APPLICATION

**Location:** Italy

**LOA:** 143' 2" (43.63m)

**Max Draft:** 5' 0" (1.51m)

**Cruise Speed:** 26 Kts. (30 MPH)

**Max Speed:** 32 Kts. (37 MPH)

Our experienced yacht broker, Andrey Shestakov, will help you choose and buy a yacht that best suits your needs **Silver Wind — ISA YACHTS** from our catalogue. Presently, at Shestakov Yacht Sales Inc., we have a wide variety of yachts available on our sale's list. We also work in close contact with all the big yacht manufacturers from all over the world.

If you would like to buy a yacht **Silver Wind — ISA YACHTS** or would like help answering any questions concerning purchasing, selling or chartering a yacht, please call **+1(954)274-4435**

---

# TABLE OF CONTENTS

---

|                                 |    |
|---------------------------------|----|
| TABLE OF CONTENTS               | 2  |
| SPECIFICATIONS                  | 3  |
| Basic Information               | 3  |
| Dimensions                      | 3  |
| Speed, Capacities and Weight    | 3  |
| Accommodations                  | 3  |
| Hull and Deck Information       | 3  |
| Engine Information              | 4  |
| DETAILED INFORMATION            | 5  |
| Accommodations                  | 5  |
| Galley                          | 5  |
| Electrical Equipment            | 6  |
| Tenders & Watersports Equipment | 7  |
| Deck Equipment                  | 8  |
| Safety & Fire Protection        | 8  |
| Exclusions                      | 9  |
| Disclaimer                      | 9  |
| PHOTOS                          | 10 |
| CONTACTS                        | 13 |
| Contact details                 | 13 |
| Telephones                      | 13 |
| Office hours                    | 13 |
| Address                         | 13 |

---

# SPECIFICATIONS

---

## Basic Information

---

**Category:** High Performance

**Model Year:** 2014

**Year Built:** 2014

**Country:** Italy

**Fly Bridge:** Yes

**Cockpit:** Yes

## Dimensions

---

**LOA:** 143' 2" (43.63m)

**Max Draft:** 5' 0" (1.51m)

## Speed, Capacities and Weight

---

**Cruise Speed:** 26 Kts. (30 MPH)

**Cruise Speed RPM:** 240 Kts.

**Cruise Speed Range:** 550

**Max Speed:** 32 Kts. (37 MPH)

**Displacement:** 529109.4288 Pounds

**Gross Tonnage:** 298 Pounds

**Water Capacity:** 5000 Gallons

**Fuel Capacity:** 31000 Gallons

## Accommodations

---

**Total Cabins:** 4

**Sleeps:** 8

## Hull and Deck Information

---

**Hull Material:** FRP

**Interior Designer:** Andrea Vallicelli

---

## Engine Information

---

**Engines:** 2

**Manufacturer:** MTU

**Model:** 16V 4000 M93L

**Fuel Type:** Diesel

# DETAILED INFORMATION

## Accommodations

The master suite occupies the entire forward area of the superstructure. The suite is arranged on a split level with the living/sleeping area at the higher level and the bathroom area forward set at a lower level. The living/sleeping area includes a king size bed, desk area, sofas, entertainment area and cabinets. Windows run forward in harmony with the shape of the superstructure and shall be appropriately shaded at will.

Access to the lower deck is through the main stairway located on the starboard side of the wheelhouse block. This stairway leads to the lower foyer where the VIP cabin (forward), two double bed guest cabins, a Gym area and captain cabin are located. Access from the guest area to the crew area shall be possible by a watertight hinged door.

The VIP cabin is full beam with a queen size bed, sofas, walk in closet and en suite bathroom with enclosed shower and a dedicated dressing area. Portholes are on port and starboard.

The two guest staterooms have side by side double bed, closet and en suite bathrooms with enclosed showers.

The aft portion of the lower deck shall include the crew area. The main access to this area is through a stairway leading from the aft port walkway down to the galley.

## Galley

- One wine cellar EUROCAVE V059
- One built-in oven model MIELE art.H6890PB
- Two sink units model ALPES INOX VS 40/35 D + ALPES INOX VS 40/35 S + IDEAL STANDARD A2719AA
- One dish washer model MIELE art.PG 8081iCLST
- One induction hob model MIELE art.KM6386
- One ice maker RARITAN art. 24 10524 mod.85F515-2

- One custom built fridge-freezer FOSTER art.EP700LU
- + FOSTER art.EP700HU
- One microwave oven model MIELE art.M6032SC
- One Trash compactor SOLISA art.BROAN ELITE 15 INX
- Two Miele® T8822C dryers machine
- One sink in stainless steel + water tap with extend
- ible head
- One coffee machine model MIELE CVA 6401
- One stainless steel exhaust range hood ALPES INOX C
- FE A 80/2, connected to the exhaust ventilator, with removable stainless steel grease filters and lighting
- wo Miele® W3371 washing machine
- One ironing wends model LAURASTAR MAGIC IS5

## Electrical Equipment

---

### Communications Equipment

- Marine VHF Antenna AC Marine CX4 146-162,5 MHz 1,26Meter
- VHF station - Radio Room SAILOR 6209 Accessory Connection Box
- SAILOR 150 Fleet Broadband Basic system
- Coaxplug PL259 for RG 214/u and Coax cable RG 214/u 2 x screen antenna cable – 80 meter
- Sat comm system - Standard C Inmarsat C SAILOR 6110 GMDSS
- SEATEL Vsat 4012 (Ka band with Ku option)

- SAILOR 6222 VHF DSC Class A
- Antenna mounting bracket, 1" pipe
- SAILOR 6209 Accessory Connection Box
- SAILOR 6204 Handset Waterproof IPx6

## Navigation Equipment

- Radar 1
- Radar 2
- Charting System
- Multi view system
- Navigation data conning
- Steering conning
- Engine data conning
- Sonar System
- CCTV
- Panoramic Camera
- Monitoring system (Maker ONYX )
- Transas Mini Searchlight 800W HSL - 800 2
- Tender Tracking System - QUATTRO System KI
- Thermal camera - M Series M618CS 25Hz PAL (not PAL slow) 640x4 80 Thermal, Daylight 28x zoom
- T TT410/K

## Tenders & Watersports Equipment

- 1x Castoldi Jet Tender 16 SB
- 2x wave runners Sea Doo Spark 3up

- Anchor cable - 4 lengths of 27.5 meter (for each anchor) of galvanized stud link steel chain of 16 mm, U.2 grade

## Deck Equipment

---

- Two MZ Electronics, vertical electrical windlasses with capstans on foredeck
- Two MZ Electronics electric capstans
- Two bow anchors of high holding power type of same weight of 180 Kg
- Four bollards on the aft deck: two on port and two on starboard side
- Four bollards on the fore deck: two on port and two on starboard side
- Four spring-line bollards integrated into the fairleads: two on port and two on starboard side
- Two small bollards at the swim platform for tender mooring
- Four fairleads on the foredeck: two on port and two on starboard side
- Two fairleads on the aft deck: one on port and one on starboard side
- Four fairleads integrated with the bollards: two on port and two on starboard side
- Besenzoni manual boarding ladder
- under deck davi

## Safety & Fire Protection

---

- Eight fire hydrants with flexible hoses at deck lockers in the direct vicinity of the Storz® valves
- BELL SHIP 8" cast bronze, chrome plated, complete with mounting bracket, installed on mast
- AIR HORNS One chrome plated Kahlenberg® model T2, chrome finish, with 24 V control panel,
- BOAT HOOK Two (2) 1 ½" diameter , ten feet long wood



- including FOG alarm USCG approved and to MCA satisfaction · pole
- FENDERS Eight (8) type Polyform F11 white/blue with
- 12 mm , 6 meter nylon line, Four (4) type Polyform A5 white/blue with 12 mm , 6 meter nylon line, Ten (10) Fender hooks model MEGAFEND
- RADAR REFLECTOR - SAILOR SART I19GHZ Search and rescue transponder
- SAAB R5 SUPREME AIS Navigation System Kit for 24VDC
- BNWAS (Bridge Navigational Watch Alarm System)
- FLAG STAFFS One ensign staff in polished stainless
- steel shall be fitted at bow. The staff shall be provided with necessary sheaves, cleats and halyards for ensign.
- METEO RECEIVER - Navtex receiver Furuno NX - 700B printerless with power supply PR - 240
- SAILOR SSAS add - on kit for SAILOR 6110

## Exclusions

---

Owner's personal belongings.

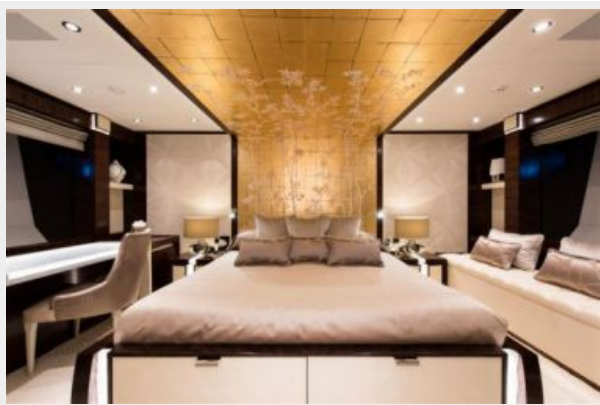
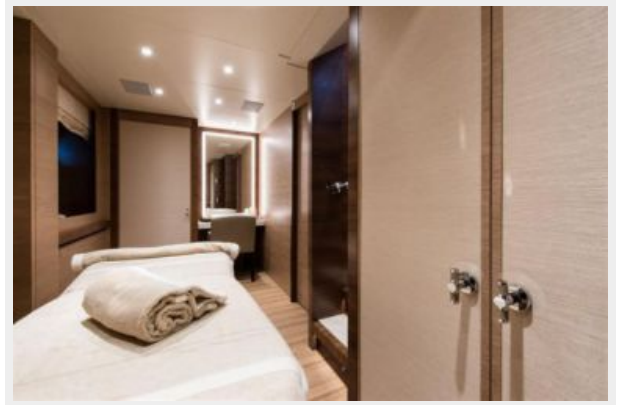
## Disclaimer

---

The Company offers the details of this vessel or yacht in good faith but cannot guarantee or warrant the accuracy of this information nor warrant the condition of the vessel. A buyer should instruct his representatives, agents, or his surveyors, to investigate such details as the buyer desires validated. This vessel or yacht is offered subject to prior sale, price change, or withdrawal without notice.

# PHOTOS







# CONTACTS

---

Andrey Shestakov, leading yacht broker of the sales department of Shestakov Yacht Sales Inc. Shestakov Yacht Sales Inc., the official representative of the Miami/Fort Lauderdale FL headquarters.

## Contact details

---

Email: [andrey@shestakovyachtsales.com](mailto:andrey@shestakovyachtsales.com)

Web: [shestakovyachtsales.com/en/](http://shestakovyachtsales.com/en/)

## Telephones

---

USA: +1(954)274-4435

## Office hours

---

Monday – Saturday: **9:00 - 21:00** EDT

Sunday: **closed**

## Address

---



Harbour Towne Marina, 850 NE 3rd St,  
STE 213, Dania, FL 33004