

N/A — TIARA



Судостроитель: TIARA

Год постройки: 2015

Модель: Крейсер

Цена: ЦЕНА ЯХТЫ ПО ЗАПРОСУ

Местонахождение: United States

Длина общая: 36' 0" (10.97m)

Ширина: 13' 3" (4.04m)

Макс. осадка: 3' 3" (0.99m)

Купить N/A — TIARA а также выбрать подходящую вам яхту из нашего каталога яхт вам поможет опытный яхтенный брокер Андрей Шестаков. На сегодняшний день компания Shestakov Yacht Sales Inc. имеет большое количество яхт в собственном списке продаж, а также тесно сотрудничает со всеми крупными яхтенными производителями по всему миру.

Для того чтобы купить яхту N/A — TIARA а также проконсультироваться по любому вопросу связанному с покупкой, продажей, чартером яхт позвоните по телефону **+7(918)465-66-44**.

ОГЛАВЛЕНИЕ

ОГЛАВЛЕНИЕ	2
ХАРАКТЕРИСТИКИ	4
Обзор	4
Основная информация	4
Размеры	4
Скорость, вместимость и масса	4
Размещение	4
Корпус и палуба	4
Информация о двигателе	5
ПОДРОБНОЕ ОПИСАНИЕ	6
Hull, Deck, & Cockpit	6
Command Bridge	6
Aft Cockpit & Transom	7
Interior	7
Salon	8
Galley	8
Master Stateroom	8
Mid-Cabin	8
Head	8
Instrumentation, Equipment, & Safety	9
Garmin Electronics Package	10
Исключения	10
Отказ от ответственности	10
ФОТОГРАФИИ	12
КОНТАКТЫ	18
Контактная информация	18
Телефоны	18
Время работы	18

Адрес

18

ХАРАКТЕРИСТИКИ

Обзор

Brand new Tiara 36' is now available at our South Lake Union office!

Fantastic new design from Tiara takes the best features of the Open and Coronet series combined. More cockpit seating, larger helm seating and new interior convertible design. Twin Cummins power and a beautiful Bentley Blue hull make this new 36 a must see.

Основная информация

Тип судна: Крейсер

Модельный год: 2015

Год постройки: 2015

Страна: United States

Размеры

Длина общая: 36' 0" (10.97m)

Ширина: 13' 3" (4.04m)

Макс. осадка: 3' 3" (0.99m)

Скорость, вместимость и масса

Водоизмещение: 19100 Pounds

Вместимость воды: 70 Gallons

Вместимость сточного бака: 27 Gallons

Объем топливного бака: 350 Gallons

Размещение

Всего кают: 2

Корпус и палуба

Материал корпуса: Fiberglass

Информация о двигателе

Производитель: Cummins

Модель: QSB 6.7

ПОДРОБНОЕ ОПИСАНИЕ

Hull, Deck, & Cockpit

- Tiara Yachts' transferable limited warranties: five years on hull, deck and fiberglass fuel tank; two years on accessories. Exclusions apply - refer to 2015 warranty statement for specific details and coverage areas.
- Fresh white gelcoat hull and deck
- DuPont® bootline (Carbon is standard)
- Hull constructed with a gelcoat outer layer, balsa cored hullsides, and hand-laid fiberglass using premium resin
- Deck constructed with a gelcoat outer layer, balsa coring, and hand-laid fiberglass using premium resin
- Tiara custom diamond pattern non-skid deck and cockpit surfaces
- Wood and foam core stringers, encapsulated by hand-laid fiberglass, integrated to hull
- Gelcoated bilge
- Bronze seacocks on all underwater thru-hull fittings
- Molded-in hullside engine room ventilation
- Lenco® electro-mechanical trim tabs with indicator lights at helm
- Four (4) S.S. oval custom opening port lights with screens
- One (1) Bomar® forward deck hatch w/ adjuster and built-in Ocean Air® screen and privacy cover
- One-piece welded, 316L S.S. 1" bow rail with staff, and Tiara burgee
- Flush forward anchor rode locker with overboard drain
- Concealed Lewmar® V1 automatic rope/chain anchor windlass with Lewmar® handheld remote control and switch at helm. Includes one (1) 8" S.S. foredeck cleat, 40' chain rode, 200' rope rode, and Delta® 35 lb. stainless steel anchor.
- White rubrail with 316L S.S. cap
- Four (4) S.S. cleats forward/midship and two (2) 10" pop-up cleats aft
- **Exterior teak accent package**
- **45" Swim platform with ladder**
- **Cockpit carpet**
- **Forward helm seat, wetbar**
- **Electric grill**
- **Teak aft cockpit table and filler cushion**
- **Hardtop with Sunroof**
- **Side curtains**
- **Hull color - Dupont Effect**
- **Custom Bootline**

Command Bridge

- Hardtop with sun roof and side enclosures
- White painted handrails on hardtop & deck wings
- Tiara custom composite windshield frame with tempered safety glass, safety handrails, opening center section and a windshield wiper system with two (2) washers/wipers
- Tiara hinged helm console with full flush mount electronics capability, one (1) drink holder, 12V outlet, teak visor, teak step treads, and 18" mahogany steering wheel
- Double helm seat electrically actuated fore and aft with storage below
- Entertainment center with sink, storage tray, and 2.6 cu ft. drawer refrigerator (wired AC and DC)
- 120V GFI outlet
- Centerline entry to salon with acrylic sliding companionway door, lock, and privacy cover
- Curved companion lounge, teak step treads, teak drink holder, and removable teak table
- Drop-down engine room access hatch from the command bridge
- Weather covers for helm console & cockpit seating

Aft Cockpit & Transom

- Molded-in steps to deck walkways, port and starboard, with teak step treads
- Cockpit LED courtesy lighting
- Cockpit shower, hot and cold water
- Port and starboard aft facing mezzanine seats
- Aft cockpit L-lounge with storage below
- Engine room hatch with actuators
- Fiberglass covering boards
- Cockpit coaming bolsters
- Self-draining cockpit with scupper drains
- One (1) longitudinal flush floor storage box (starboard) and two (2) lazzerette floor hatches
- Molded-in transom door
- 45" swim platform with built-in ladder
- Fresh water washdown outlet with 25 ft. coiled blue hose
- Raw water washdown outlet with 25 ft. coiled yellow hose

Interior

- Mold and mildew resistant vinyl hull and headliner treatment
- Architectural teak interior wood
- Amtico® Dark Walnut floor
- Clarion® CMD7 CD/USB/MP3 aux/FM stereo with cockpit remote, 6 channel amp, two (2) interior Clarion® speakers, four (4) Clarion® marine cockpit speakers, one (1) 8" subwoofer speaker, one (1) additional cockpit remote, and USB combo port
- 120V outlets throughout
- 12V LED lighting

Salon

- Teak companionway steps
- Companionway handrail with LED rope lighting
- Marine Air Systems® 12,000 BTU air conditioner with reverse cycle heat

Galley

- Corian® countertop
- Stainless steel undermount sink with Corian® cover and hot/cold faucet
- Upper storage cabinets
- Storage under the galley countertop
- Two storage drawers below refrigerator
- Recessed one-burner electric cooktop with Corian® cover and safety shut-off switch
- Convection microwave oven
- Refrigerator
- Exhaust fan

Master Stateroom

- Forward scissors berth with foam mattresses and choice of fabric covers. Berths may be pushed together to make one berth.
- Hi-lo teak table with a removable pedestal
- Privacy curtain
- Four (4) interior throw pillows
- Storage compartments under berth
- Port and starboard hanging lockers
- Upper hullside cabinets, port and starboard
- Two (2) reading lights, independently switched
- 19" LCD TV with connection port

Mid-Cabin

- Foam mattress with choice of fabric cover
- Two (2) pillow shams
- One (1) reading light, independently switched
- Settee
- Privacy curtain

Head

- Full frame wood door
- Full fiberglass head with shower sump pump and glass shower door
- Corian® countertop with integrated sink
- Mirrored vanity above sink
- Storage compartment below sink
- Vacuflush® toilet
- Exhaust fan
- Air conditioning vent
- GFI protected outlets

Instrumentation, Equipment, & Safety

- Tiara custom 12V and 120V electrical distribution panels
- One (1) 120V 30 amp 65' dockside power cord with 30 amp to 15 amp adapter
- Cable TV inlet and cabin outlets with 65' dockside power cord
- TV and AM/FM radio antennas
- Battery charger (1), 30 amp
- 12V two bank battery system: Three (3) house batteries and two (2) engine batteries.
- Inverter option includes two (2) additional house batteries.
- Battery parallel system
- Reverse polarity indicator
- Electrical bonding system
- Pre-wiring for optional generator
- Zincs, transom & propeller shafts
- Single lever electronic controls
- Hydraulic steering system
- Bronze axe head rudders & struts
- Aquamet® S.S. prop shafts, 1 1/2" for gas engine option and 2" for diesel engine option
- Water cooled shaft logs with PSS® dripless shaft seal
- Two (2) Nibral® propellers
- High output alternators with internal regulators
- SmartCraft Vessel View™ single display for monitoring engine systems
- Ritchie® SuperSport SS-2000 compass
- Engine room acoustical insulation
- Seven (7) 12V LED engine room lights
- Two (2) Racor® fuel filters/water separators
- Two (2) raw water intake strainers
- Vibration isolation mounts for engines
- Bilge blowers: two (2) with gas engine option; one (1) with diesel engine option
- Three (3) automatic/manual bilge pumps with monitors at the helm, 2000 GPH each: One (1) forward, one (1) mid, one (1) aft
- One (1) composite fuel tank, 350 gallons, with fuel shut-off valve on top of tank
- Dockside water inlet

- One (1) fresh water tank with monitor, 70 gallons
- Fresh water pressure system with Shurflo® variable speed pump, five (5) GPM
- One (1) holding tank with monitor, 27 gallons
- One (1) water heater with exchanger, six (6) gallons
- Air horn
- FE-241 agent automatic/manual fire extinguisher system in engine room (HFC-227ea agent for Europe)
- Three (3) handheld fire extinguishers
- Two (2) carbon monoxide detectors
- Two (2) smoke detectors
- Six (6) 5/8" x 30' black dock lines
- Four (4) Tiara life vests (domestic boats only)
- USCG safety and medical kit
- USCG/international navigation lighting
- NMMA certified using ABYC standards
- International certification options available (European CE and others)
- **12V Inverter**
- **Generator Onan 5kw**
- **Oil changing system**
- **Bow thruster**
- **Macerator for waste system**

Garmin Electronics Package

- **(2) 8212 multi-function touchscreen displays with GPS**
- **VHF 200 Radio**
- **GSD24 digital remote sonar**
- **1kw transducer**
- **GHP 10 autopilot**
- **GMR 604 6kw xHD open array radar**

Исключения

При продаже яхты исключаются личные вещи владельца.

Отказ от ответственности

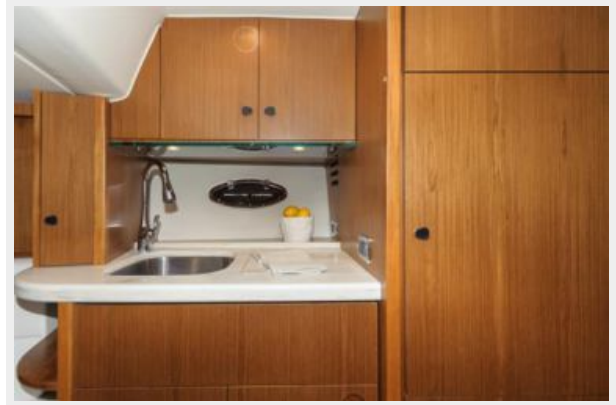
Компания предоставляет описание судна или яхты добросовестно, но не может гарантировать точность этой информации, а также не ручается за техническое состояние. Покупатель должен проинструктировать своих агентов или оценщиков исследовать представленную информацию более подробно, по собственному желанию. Продажа судна или яхты, изменение цены или снятие с продажи будет происходить без

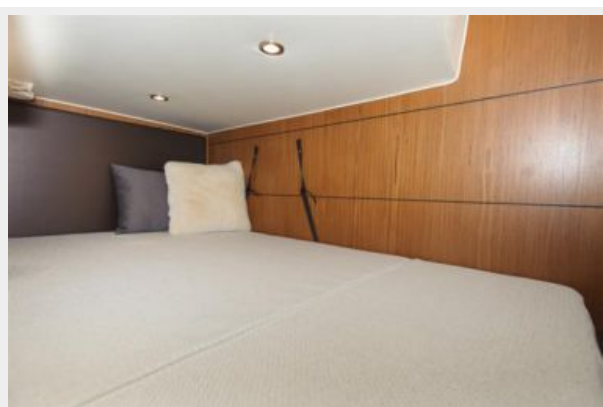
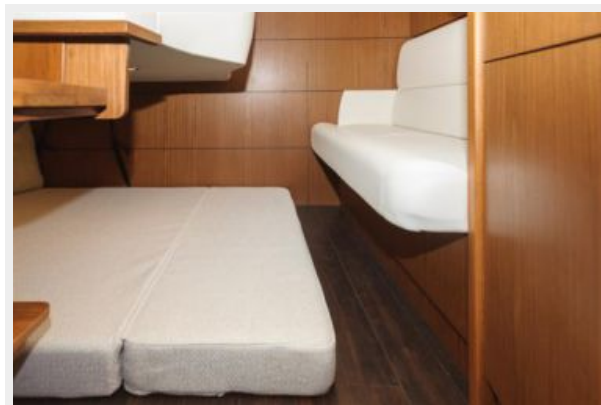
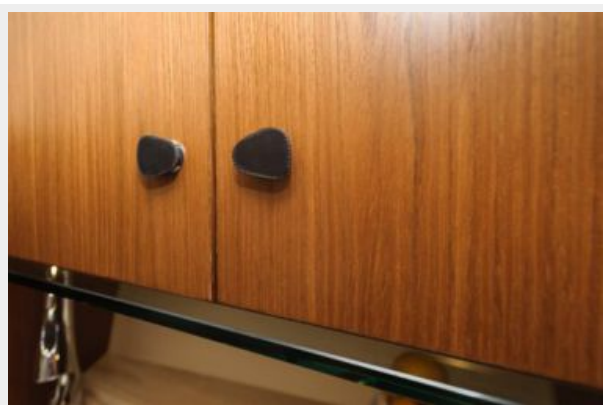
предварительного уведомления.

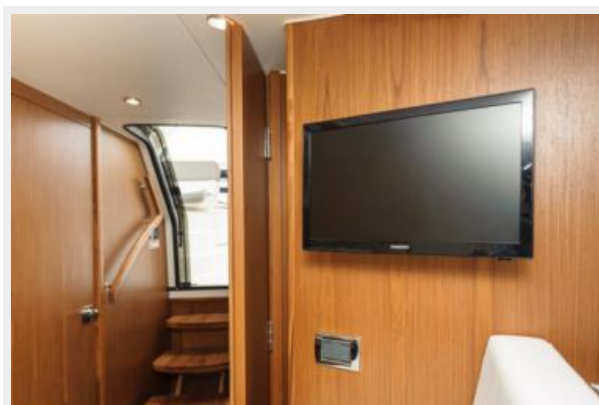
ФОТОГРАФИИ













КОНТАКТЫ

Андрей Шестаков (Andrey Shestakov) – ведущий яхтенный брокер отдела продаж яхт и судов компании Shestakov Yacht Sales Inc. Официальный представитель Shestakov Yacht Sales Inc. для русскоговорящих клиентов в центральном офисе компании в Майами/Форт Лодердейл/Флорида/США.

Контактная информация

Email: andrey@shestakovyachtsales.com

Web: shestakovyachtsales.com

Телефоны

Краснодарский край: **+7(918)465-66-44**

США, Майами, Флорида: **+1(954)274-4435**

Время работы

Понедельник – Суббота: **9:00 - 21:00**
EDT

Воскресенье: **Закрето**

Адрес



Harbour Towne Marina, 850 NE 3rd St,
STE 213, Dania, FL 33004