

GRACE — EVANS BOATS



Builder: EVANS BOATS

Year Built: 2009

Model: Trawler

Price: PRICE ON APPLICATION

Location: United States

LOA: 38' 0" (11.58m)

Beam: 14' 6" (4.42m)

Max Draft: 3' 4" (1.02m)

Our experienced yacht broker, Andrey Shestakov, will help you choose and buy a yacht that best suits your needs **Grace — EVANS BOATS** from our catalogue. Presently, at Shestakov Yacht Sales Inc., we have a wide variety of yachts available on our sale's list. We also work in close contact with all the big yacht manufacturers from all over the world.

If you would like to buy a yacht **Grace — EVANS BOATS** or would like help answering any questions concerning purchasing, selling or chartering a yacht, please call **+1(954)274-4435**

TABLE OF CONTENTS

TABLE OF CONTENTS	2
SPECIFICATIONS	4
Overview	4
Basic Information	4
Dimensions	4
Speed, Capacities and Weight	4
Accommodations	5
Hull and Deck Information	5
Engine Information	5
DETAILED INFORMATION	6
Construction	6
Accommodations and Layout	6
Electronics	7
Engine Room and Mechanicals	7
Electric	8
Deck and Hull	8
Disclaimer	8
Exclusions	9
Disclaimer	9
PHOTOS	10
Galley	10
Queen in Stateroom	10
Helm	10
Underway	10
Cockpit	10
Dinette Converts to Berth	11
Transom	11
Companion Seating	11

A/C and Heat	11
Stateroom	11
Electric Panel	11
Head	12
Stateroom TV	12
Common Rail Cummins	12
Onan Genset with Soundshield	12
Generator Motor	12
Outboard Access in Engine Room	12
Freshwater Tank and Hot Water	13
Rooftop with Custom Electronics Arch	13
Rooftop Looking Aft	13
Bow	13
Windlass	13
Profile	14
CONTACTS	15
Contact details	15
Telephones	15
Office hours	15
Address	15

SPECIFICATIONS

Overview

"Grace" is a beautiful one owner boat that was custom built for her knowledgeable owner who valued not only her handsome lines but her straightforward construction and engineering. Utilizing the design that has made Evans a favored builder among watermen and yachtsman alike this Chesapeake Bay workboat or deadrise style boat was customized to be equally at home whether cruising, fishing or just anchoring in your favorite cove.

With features like her efficient common rail Cummins 490hp motor, fully protected running gear, large air conditioned/heated wheel house, a full suite of electronics, queen size stateroom and a one level cockpit with overhang, etc. she would be an ideal boat for a couple looking to do the Great Loop or a trip to the islands.

Easily located in the water in Baltimore's Inner Harbor, "Grace" is a pleasure to show and should not be missed. Just minutes off Interstate I-95 and only 20-25 minutes away from Baltimore Washington International Airport (BWI), please call today to come see her firsthand!

Basic Information

Category: Trawler

Model Year: 2009

Year Built: 2009

Country: United States

Dimensions

LOA: 38' 0" (11.58m)

Beam: 14' 6" (4.42m)

Max Draft: 3' 4" (1.02m)

Speed, Capacities and Weight

Displacement: 23000 Pounds

Water Capacity: 70 Gallons

Holding Tank: 25 Gallons

Fuel Capacity: 365 Gallons

Accommodations

Total Cabins: 1

Hull and Deck Information

Hull Material: Fiberglass

Engine Information

Engines: 1

Manufacturer: Cummins

Model: 8.3 QSC Common Rail

Engine Type: Inboard

Fuel Type: Diesel

DETAILED INFORMATION

Construction

"Grace" is a custom 2009 Evans 38 built hull and superstructure with outfitting and finishing by Composite Yachts in Cambridge, MD. This original owner boat features a solid fiberglass hull in the traditional deadrise style made famous by Chesapeake Bay watermen. Heavily built with foam encapsulated stringers, USCG certified fuel tank and fuel system and commercial Diamond Seaglaze windows she has proven herself very reliable in her light duty role as a personal cruising boat but could be USCG certified (COI) with limited modifications if someone wanted to use her in a commercial fashion.

- USCG Certified fuel tank and fuel system
- Back up throttle control
- Foam encapsulated stringers
- Correct cockpit freeing port area as calculated for COI Bay Service
- Certified steering system
- 38' x 14.5' x 3.25' Custom solid fiberglass hull
- Extended wheel house with overhang but with plenty of cockpit space and the ability to still cast and troll
- Dual helm stations with wheel house and cockpit controls

Accommodations and Layout

"Grace" was built as a boat with the ability to be easily single handed, offer enough room for a couple to stay on in comfort while still being able to accommodate guests, provide a large air conditioned wheel house with ample seating and galley up, and have a very functional cockpit that could easily be used for entertaining, fishing or sitting out on deck chairs while watching a sunset.

Approaching "Grace" from the dock, one cannot hardly pass by without admiring her timeless Chesapeake deadrise styling and lines fitting of her name. A massive cockpit provides versatility as this boat could easily fish a half dozen anglers along her sides and transom or be filled with deck chairs and a table to invite friends out for a evening fireworks cruise. A cockpit helm station provides easy backing down and line handling and the current owner often single hands this boat.

The extended deckhouse provides enough of an overhang to provide a shaded area to the cockpit while still allowing enough room to cast and angle from further aft. Moving in from the cockpit "Grace" provides a very bright and open layout with the galley to starboard and a dinette that converts to another berth to port. The galley is well laid out with a solid surface countertop, white cabinetry and commercial grade refrigerator. Just forward is the pilothouse helm to starboard with a double wide helm seat. The helm is well laid out and clean with Furuno

electronics and autopilot. To port there is an additional double wide companion seat facing forward and raised for excellent visibility. Storage abounds in cabinets and drawers and engine access is flush through the cabins sole.

Down a few steps and forward is the stateroom with an offset queen sized berth with abundant storage underneath. A full head with electric toilet is back and to port and there is an extra storage room with entry to an electrical locker to starboard.

Natural lighting and low maintenance finishes keep the interior inviting and practical. The large commercial Diamond Seaglaze sliding windows give a 360 degree view from inside and can open to allow for a breeze when one is not using the air conditioning or heat.

- Two Mach 16,000 BTU Air Conditioners with Electric Heat
- Heatercraft hydronic 3 speed heater connected to propulsion engine
- Queen size mattress in master cabin
- Drop down dinette table in wheelhouse for guest overnight accommodation
- Electric toilet with sink and shower in head compartment
- 25 gallon holding tank with Y valve and overboard discharge ability
- 75 gallons of freshwater with automatic pressurized system
- 12 gallon hot water heater (electric & hydronically heated)
- 5.1 cu ft. Summit commercial stainless front refrigerator/freezer
- Microwave
- Two Burner Stove
- Sink
- Corian Countertops

Electronics

- Custom built electronics arch by Composite Yachts
- Furuno NavNet 3D GPS/Chartplotter on 12" display
- Furuno FCV-620 Color Depth
- Furuno 4' Open Array Radar
- Furuno Nav Pilot 500 Hydraulic Autopilot Interfaced to NavNet 3D
- Icom M604 VHF with Hailer (listen mode and foghorn)
- ACR Remote Control Spotlight
- Fusion MS IP600 Ipod/FM Stereo with 6 Speakers with 3 Zones
- Glomex Amplified TV Antenna
- Two Flat Screen TV's
- Dual Trumpet Kahlenberg Air Horn
- Compass
- Cummins SmartCraft Multi Purpose Display

Engine Room and Mechanicals

- 365 gallon USCG Certified Fuel Tank
- Fireboy Automatic Engine Room Fire Extinguisher System
- (3) Automatic Bilge Pumps
- 4 Bladed 25" x 25" Bronze Propeller
- Spare 3 Bladed 27" x 25" Nibral Propeller (used but completely balanced and refurbished)

Cruise speed is 16 knots although the owner cruised most of the time back at **7 knots (1000 RPM) getting 4 Statute Miles to the Gallon**. Top end with the four bladed propeller is 18 knots while the boat is capable of 20 knots with the 3 bladed prop.

Electric

- 9kw Onan EQD Diesel Generator in Sound Shield (785 hours)
- Xantrex 1800 Watt True Sine Inverter
- (2) Xantrex 40 Amp Battery Chargers
- Shorepower System
- Shorepower Cord
- AC and DC System
- AGM House Battery Just Replaced Summer of 2014

Deck and Hull

- Solid Fiberglass Hull in white gelcoat
- Topsides are Awlcraft painted
- EZ Puller Anchor Windlass by Puller Mfg. (ultra-reliable)
- 300' of anchor line with 10' of chain rode
- Delta Anchor
- Anchor Pulpit
- Non Skid Decks and House Top
- Custom Aluminum Electronics Arch by Composite Yachts
- Cockpit Engine and Steering Controls
- Very Stable Custom Built Aluminum Swim Ladder (Removable for Fishing but great for Diving/Swimming)
- Heavy Duty Rub Rail

Disclaimer

While we attempt to display current and accurate data, this listing may not reflect the most recent transactions or may contain occasional data entry errors. Selling agent makes no warranties, express or implied, regarding the content or availability of the products described herein. All inventory listed is subject to availability and prior sale. Please consult selling agent for details.

Prices are quoted for the USA only and may not include transportation, taxes, or other applicable charges. Photographs may be representative only and may vary somewhat from the actual items offered for sale. We will not be responsible for inaccurate data obtained from our site. Please check with your local dealer to ensure that you have the latest information available. Information on this web site could include technical inaccuracies or typographical errors. Changes may be periodically made to the information or the products herein. Questions or comments regarding these policies may be directed to website hosting agent.

Exclusions

Owner's personal belongings.

Disclaimer

The Company offers the details of this vessel or yacht in good faith but cannot guarantee or warrant the accuracy of this information nor warrant the condition of the vessel. A buyer should instruct his representatives, agents, or his surveyors, to investigate such details as the buyer desires validated. This vessel or yacht is offered subject to prior sale, price change, or withdrawal without notice.

PHOTOS

Galley



Queen in Stateroom



Helm



Underway



Cockpit



Transom



Dinette Converts to Berth



Companion Seating



A/C and Heat



Stateroom



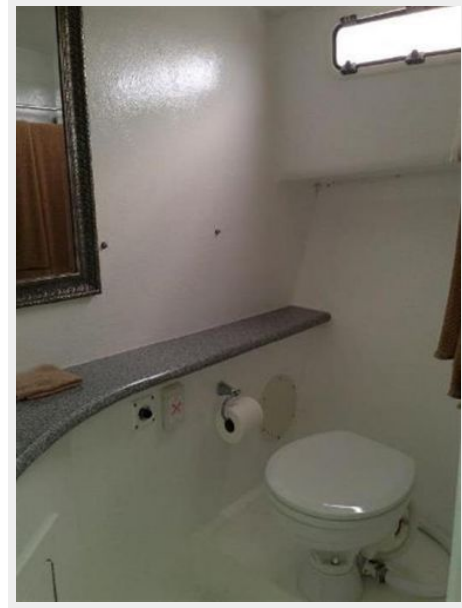
Electric Panel



Stateroom TV



Head



Common Rail Cummins



Onan Genset with Soundshield



Generator Motor



Outboard Access in Engine Room



Freshwater Tank and Hot Water



Rooftop with Custom Electronics Arch



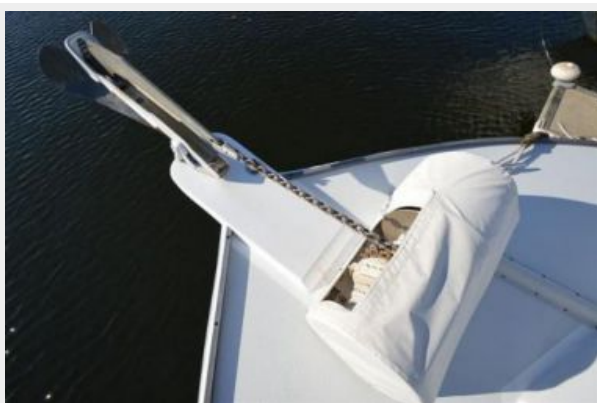
Rooftop Looking Aft



Bow



Windlass





Profile



CONTACTS

Andrey Shestakov, leading yacht broker of the sales department of Shestakov Yacht Sales Inc. Shestakov Yacht Sales Inc., the official representative of the Miami/Fort Lauderdale FL headquarters.

Contact details

Email: andrey@shestakovyachtsales.com

Web: shestakovyachtsales.com/en/

Telephones

USA: +1(954)274-4435

Office hours

Monday – Saturday: **9:00 - 21:00** EDT

Sunday: **closed**

Address



Harbour Towne Marina, 850 NE 3rd St,
STE 213, Dania, FL 33004