

## GRACE — EVANS BOATS



**Судостроитель:** EVANS BOATS

**Год постройки:** 2009

**Модель:** Траулер

**Цена:** ЦЕНА ЯХТЫ ПО ЗАПРОСУ

**Местонахождение:** United States

**Длина общая:** 38' 0" (11.58m)

**Ширина:** 14' 6" (4.42m)

**Макс. осадка:** 3' 4" (1.02m)

Купить **Grace — EVANS BOATS** а также выбрать подходящую вам яхту из нашего каталога яхт вам поможет опытный яхтенный брокер Андрей Шестаков. На сегодняшний день компания **Shestakov Yacht Sales Inc.** имеет большое количество яхт в собственном списке продаж, а также тесно сотрудничает со всеми крупными яхтенными производителями по всему миру.

Для того чтобы купить яхту **Grace — EVANS BOATS** а также проконсультироваться по любому вопросу связанному с покупкой, продажей, чартером яхт позвоните по телефону **+7(918)465-66-44**.

# ОГЛАВЛЕНИЕ

ОГЛАВЛЕНИЕ	2
ХАРАКТЕРИСТИКИ	4
Обзор	4
Основная информация	4
Размеры	4
Скорость, вместимость и масса	4
Размещение	5
Корпус и палуба	5
Информация о двигателе	5
ПОДРОБНОЕ ОПИСАНИЕ	6
Construction	6
Accommodations and Layout	6
Electronics	7
Engine Room and Mechanicals	7
Electric	8
Deck and Hull	8
Disclaimer	8
Исключения	9
Отказ от ответственности	9
ФОТОГРАФИИ	10
Galley	10
Queen in Stateroom	10
Helm	10
Underway	10
Cockpit	10
Dinette Converts to Berth	11
Transom	11
Companion Seating	11

---

A/C and Heat	11
Stateroom	11
Electric Panel	11
Head	12
Stateroom TV	12
Common Rail Cummins	12
Onan Genset with Soundshield	12
Generator Motor	12
Outboard Access in Engine Room	12
Freshwater Tank and Hot Water	13
Rooftop with Custom Electronics Arch	13
Rooftop Looking Aft	13
Bow	13
Windlass	13
Profile	14
КОНТАКТЫ	15
Контактная информация	15
Телефоны	15
Время работы	15
Адрес	15

# ХАРАКТЕРИСТИКИ

## Обзор

"Grace" is a beautiful one owner boat that was custom built for her knowledgeable owner who valued not only her handsome lines but her straightforward construction and engineering. Utilizing the design that has made Evans a favored builder among watermen and yachtsman alike this Chesapeake Bay workboat or deadrise style boat was customized to be equally at home whether cruising, fishing or just anchoring in your favorite cove.

With features like her efficient common rail Cummins 490hp motor, fully protected running gear, large air conditioned/heated wheel house, a full suite of electronics, queen size stateroom and a one level cockpit with overhang, etc. she would be an ideal boat for a couple looking to do the Great Loop or a trip to the islands.

Easily located in the water in Baltimore's Inner Harbor, "Grace" is a pleasure to show and should not be missed. Just minutes off Interstate I-95 and only 20-25 minutes away from Baltimore Washington International Airport (BWI), please call today to come see her firsthand!

## Основная информация

Тип судна: Траулер

Модельный год: 2009

Год постройки: 2009

Страна: United States

## Размеры

Длина общая: 38' 0" (11.58m)

Ширина: 14' 6" (4.42m)

Макс. осадка: 3' 4" (1.02m)

## Скорость, вместимость и масса

Водоизмещение: 23000 Pounds

Вместимость воды: 70 Gallons

Вместимость сточного бака: 25 Gallons

Объем топливного бака: 365 Gallons

---

## Размещение

---

Всего кают: 1

---

## Корпус и палуба

---

Материал корпуса: Fiberglass

---

## Информация о двигателе

---

Двигатели: 1

Производитель: Cummins

Модель: 8.3 QSC Common Rail

Тип двигателя: Inboard

Тип топлива: Diesel

---

# ПОДРОБНОЕ ОПИСАНИЕ

---

## Construction

---

"Grace" is a custom 2009 Evans 38 built hull and superstructure with outfitting and finishing by Composite Yachts in Cambridge, MD. This original owner boat features a solid fiberglass hull in the traditional deadrise style made famous by Chesapeake Bay watermen. Heavily built with foam encapsulated stringers, USCG certified fuel tank and fuel system and commercial Diamond Seaglaze windows she has proven herself very reliable in her light duty role as a personal cruising boat but could be USCG certified (COI) with limited modifications if someone wanted to use her in a commercial fashion.

- USCG Certified fuel tank and fuel system
- Back up throttle control
- Foam encapsulated stringers
- Correct cockpit freeing port area as calculated for COI Bay Service
- Certified steering system
- 38' x 14.5' x 3.25' Custom solid fiberglass hull
- Extended wheel house with overhang but with plenty of cockpit space and the ability to still cast and troll
- Dual helm stations with wheel house and cockpit controls

## Accommodations and Layout

---

"Grace" was built as a boat with the ability to be easily single handed, offer enough room for a couple to stay on in comfort while still being able to accommodate guests, provide a large air conditioned wheel house with ample seating and galley up, and have a very functional cockpit that could easily be used for entertaining, fishing or sitting out on deck chairs while watching a sunset.

Approaching "Grace" from the dock, one cannot hardly pass by without admiring her timeless Chesapeake deadrise styling and lines fitting of her name. A massive cockpit provides versatility as this boat could easily fish a half dozen anglers along her sides and transom or be filled with deck chairs and a table to invite friends out for a evening fireworks cruise. A cockpit helm station provides easy backing down and line handling and the current owner often single hands this boat.

The extended deckhouse provides enough of an overhang to provide a shaded area to the cockpit while still allowing enough room to cast and angle from further aft. Moving in from the cockpit "Grace" provides a very bright and open layout with the galley to starboard and a dinette that converts to another berth to port. The galley is well laid out with a solid surface countertop, white cabinetry and commercial grade refrigerator. Just forward is the pilothouse helm to starboard with a double wide helm seat. The helm is well laid out and clean with Furuno

electronics and autopilot. To port there is an additional double wide companion seat facing forward and raised for excellent visibility. Storage abounds in cabinets and drawers and engine access is flush through the cabins sole.

Down a few steps and forward is the stateroom with an offset queen sized berth with abundant storage underneath. A full head with electric toilet is back and to port and there is an extra storage room with entry to an electrical locker to starboard.

Natural lighting and low maintenance finishes keep the interior inviting and practical. The large commercial Diamond Seaglaze sliding windows give a 360 degree view from inside and can open to allow for a breeze when one is not using the air conditioning or heat.

- Two Mach 16,000 BTU Air Conditioners with Electric Heat
- Heatercraft hydronic 3 speed heater connected to propulsion engine
- Queen size mattress in master cabin
- Drop down dinette table in wheelhouse for guest overnight accommodation
- Electric toilet with sink and shower in head compartment
- 25 gallon holding tank with Y valve and overboard discharge ability
- 75 gallons of freshwater with automatic pressurized system
- 12 gallon hot water heater (electric & hydronically heated)
- 5.1 cu ft. Summit commercial stainless front refrigerator/freezer
- Microwave
- Two Burner Stove
- Sink
- Corian Countertops

## Electronics

---

- Custom built electronics arch by Composite Yachts
- Furuno NavNet 3D GPS/Chartplotter on 12" display
- Furuno FCV-620 Color Depth
- Furuno 4' Open Array Radar
- Furuno Nav Pilot 500 Hydraulic Autopilot Interfaced to NavNet 3D
- Icom M604 VHF with Hailer (listen mode and foghorn)
- ACR Remote Control Spotlight
- Fusion MS IP600 Ipod/FM Stereo with 6 Speakers with 3 Zones
- Glomex Amplified TV Antenna
- Two Flat Screen TV's
- Dual Trumpet Kahlenberg Air Horn
- Compass
- Cummins SmartCraft Multi Purpose Display

## Engine Room and Mechanicals

---

- 365 gallon USCG Certified Fuel Tank
- Fireboy Automatic Engine Room Fire Extinguisher System
- (3) Automatic Bilge Pumps
- 4 Bladed 25" x 25" Bronze Propeller
- Spare 3 Bladed 27" x 25" Nibral Propeller (used but completely balanced and refurbished)

Cruise speed is 16 knots although the owner cruised most of the time back at **7 knots (1000 RPM) getting 4 Statute Miles to the Gallon**. Top end with the four bladed propeller is 18 knots while the boat is capable of 20 knots with the 3 bladed prop.

---

## Electric

---

- 9kw Onan EQD Diesel Generator in Sound Shield (785 hours)
- Xantrex 1800 Watt True Sine Inverter
- (2) Xantrex 40 Amp Battery Chargers
- Shorepower System
- Shorepower Cord
- AC and DC System
- AGM House Battery Just Replaced Summer of 2014

---

## Deck and Hull

---

- Solid Fiberglass Hull in white gelcoat
- Topsides are Awlcraft painted
- EZ Puller Anchor Windlass by Puller Mfg. (ultra-reliable)
- 300' of anchor line with 10' of chain rode
- Delta Anchor
- Anchor Pulpit
- Non Skid Decks and House Top
- Custom Aluminum Electronics Arch by Composite Yachts
- Cockpit Engine and Steering Controls
- Very Stable Custom Built Aluminum Swim Ladder (Removable for Fishing but great for Diving/Swimming)
- Heavy Duty Rub Rail

---

## Disclaimer

---

While we attempt to display current and accurate data, this listing may not reflect the most recent transactions or may contain occasional data entry errors. Selling agent makes no warranties, express or implied, regarding the content or availability of the products described herein. All inventory listed is subject to availability and prior sale. Please consult selling agent for details.



Prices are quoted for the USA only and may not include transportation, taxes, or other applicable charges. Photographs may be representative only and may vary somewhat from the actual items offered for sale. We will not be responsible for inaccurate data obtained from our site. Please check with your local dealer to ensure that you have the latest information available. Information on this web site could include technical inaccuracies or typographical errors. Changes may be periodically made to the information or the products herein. Questions or comments regarding these policies may be directed to website hosting agent.

## **Исключения**

---

При продаже яхты исключаются личные вещи владельца.

## **Отказ от ответственности**

---

Компания предоставляет описание судна или яхты добросовестно, но не может гарантировать точность этой информации, а также не ручается за техническое состояние. Покупатель должен проинструктировать своих агентов или оценщиков исследовать представленную информацию более подробно, по собственному желанию. Продажа судна или яхты, изменение цены или снятие с продажи будет происходить без предварительного уведомления.

# ФОТОГРАФИИ

**Galley**



**Queen in Stateroom**



**Helm**



**Underway**



**Cockpit**



**Transom**



**Dinette Converts to Berth**



**Companion Seating**



**A/C and Heat**



**Stateroom**



**Electric Panel**

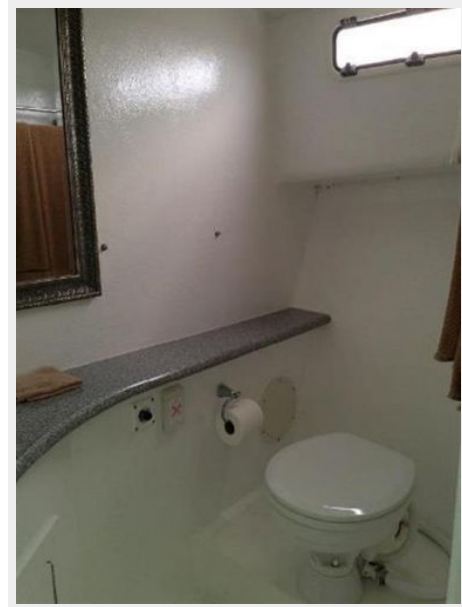




**Stateroom TV**



**Head**



**Common Rail Cummins**



**Onan Genset with Soundshield**



**Generator Motor**



**Outboard Access in Engine Room**



**Freshwater Tank and Hot Water**



**Rooftop with Custom Electronics Arch**



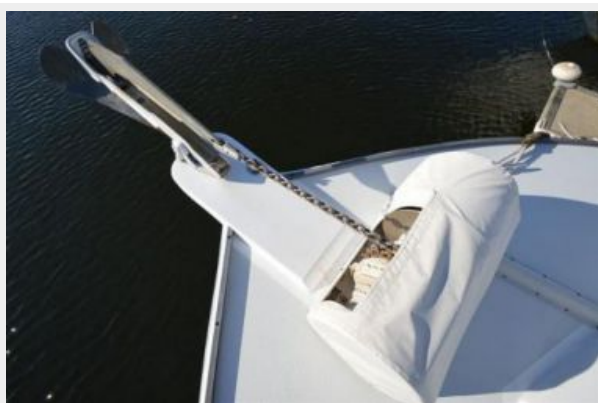
**Rooftop Looking Aft**



**Bow**



**Windlass**





### Profile





# КОНТАКТЫ

---

Андрей Шестаков (Andrey Shestakov) – ведущий яхтенный брокер отдела продаж яхт и судов компании Shestakov Yacht Sales Inc. Официальный представитель Shestakov Yacht Sales Inc. для русскоговорящих клиентов в центральном офисе компании в Майами/Форт Лодердейл/Флорида/США.

## Контактная информация

---

Email: [andrey@shestakovyachtsales.com](mailto:andrey@shestakovyachtsales.com)

Web: [shestakovyachtsales.com](http://shestakovyachtsales.com)

## Телефоны

---

Краснодарский край: **+7(918)465-66-44**

США, Майами, Флорида: **+1(954)274-4435**

## Время работы

---

Понедельник – Суббота: **9:00 - 21:00**  
EDT

Воскресенье: **Закрито**

## Адрес

---



Harbour Towne Marina, 850 NE 3rd St,  
STE 213, Dania, FL 33004