

1001 RULE — SILVERTON



Builder: SILVERTON

Year Built: 2008

Model: Motor Yacht

Price: PRICE ON APPLICATION

Location: United States

LOA: 44' 6" (13.56m)

Beam: 14' 11" (4.55m)

Max Draft: 3' 7" (1.09m)

Cruise Speed: 20 Kts. (23 MPH)

Max Speed: 25 Kts. (29 MPH)

Our experienced yacht broker, Andrey Shestakov, will help you choose and buy a yacht that best suits your needs **1001 Rule — SILVERTON** from our catalogue. Presently, at Shestakov Yacht Sales Inc., we have a wide variety of yachts available on our sale's list. We also work in close contact with all the big yacht manufacturers from all over the world.

If you would like to buy a yacht **1001 Rule — SILVERTON** or would like help answering any questions concerning purchasing, selling or chartering a yacht, please call **+1(954)274-4435**

TABLE OF CONTENTS

TABLE OF CONTENTS	2
SPECIFICATIONS	3
Overview	3
Basic Information	3
Dimensions	3
Speed, Capacities and Weight	4
Accommodations	4
Hull and Deck Information	4
Engine Information	4
PHOTOS	5
CONTACTS	10
Contact details	10
Telephones	10
Office hours	10
Address	10

SPECIFICATIONS

Overview

Fish or cruise, this boat is the perfect family vessel! Lovingly cared for by her original owner and ready to make new memories.

This layout is terrific whether you are spending a day, overnight or a few weeks. Large, functional cockpit with molded-in steps to the flybridge which is spacious with lots of seating. The interior is bright and the beautiful, warm woodwork makes for an inviting space to relax. The large u-shaped dinette accommodates a crowd and the galley is highly functional, bright and has lots of storage space. Sleeps 6 people in two staterooms and convertible sofa in salon. Separate head and shower rooms provide lots of space, not usually found on a boat of this size.

Powered by dependable 440HP Yanmar Diesels and ready to go!

Motivated owner is ready to sell - NOW!

Basic Information

Category: Motor Yacht

Sub Category: Convertible

Model Year: 2008

Year Built: 2008

Country: United States

Fly Bridge: Yes

Cockpit: Yes

Dimensions

LOA: 44' 6" (13.56m)

Beam: 14' 11" (4.55m)

Max Draft: 3' 7" (1.09m)

Clearance: 16' 8" (5.08m)

Speed, Capacities and Weight

Cruise Speed: 20 Kts. (23 MPH)

Max Speed: 25 Kts. (29 MPH)

Water Capacity: 200 Gallons

Holding Tank: 40 Gallons

Fuel Capacity: 524 Gallons

Accommodations

Total Cabins: 2

Total Berths: 2

Sleeps: 6

Total Heads: 1

Hull and Deck Information

Hull Material: Fiberglass

Engine Information

Engines: 2

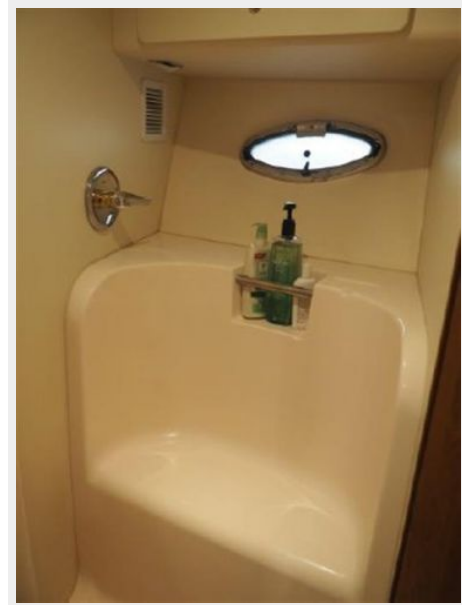
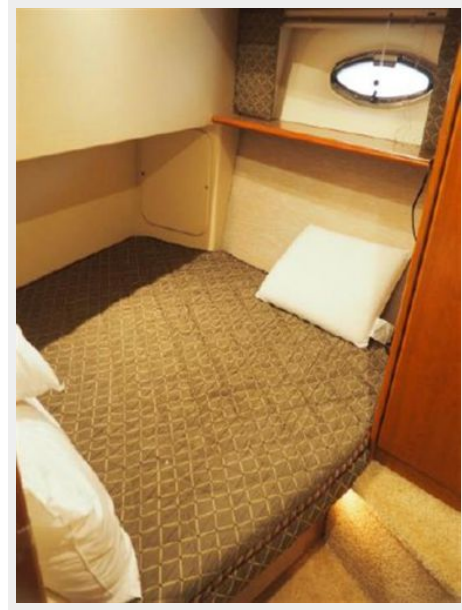
Manufacturer: Yanmar

Engine Type: Inboard

Fuel Type: Diesel

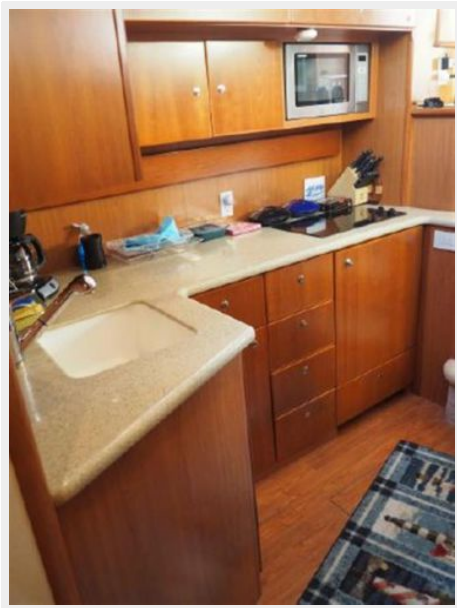
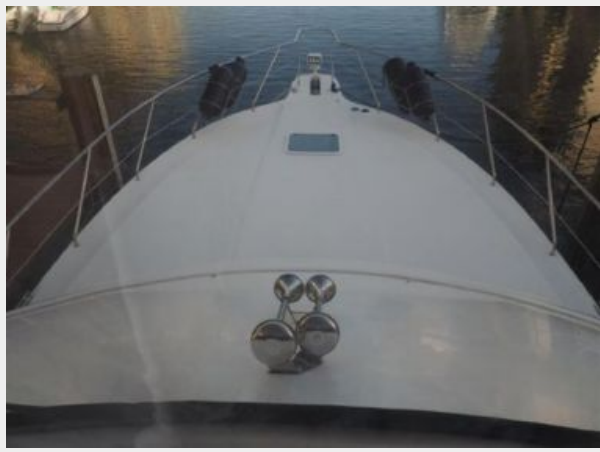
PHOTOS











CONTACTS

Andrey Shestakov, leading yacht broker of the sales department of Shestakov Yacht Sales Inc. Shestakov Yacht Sales Inc., the official representative of the Miami/Fort Lauderdale FL headquarters.

Contact details

Email: andrey@shestakovyachtsales.com

Web: shestakovyachtsales.com/en/

Telephones

USA: +1(954)274-4435

Office hours

Monday – Saturday: **9:00 - 21:00** EDT

Sunday: **closed**

Address



Harbour Towne Marina, 850 NE 3rd St,
STE 213, Dania, FL 33004