

JAIME GIRL — MARQUIS



Builder: MARQUIS

Year Built: 2007

Model: Motor Yacht

Price: PRICE ON APPLICATION

Location: United States

LOA: 55' 0" (16.76m)

Beam: 16' 0" (4.88m)

Max Draft: 4' 11" (1.50m)

Cruise Speed: 21 Kts. (24 MPH)

Max Speed: 25 Kts. (29 MPH)

Our experienced yacht broker, Andrey Shestakov, will help you choose and buy a yacht that best suits your needs **Jaime Girl — MARQUIS** from our catalogue. Presently, at Shestakov Yacht Sales Inc., we have a wide variety of yachts available on our sale's list. We also work in close contact with all the big yacht manufacturers from all over the world.

If you would like to buy a yacht **Jaime Girl — MARQUIS** or would like help answering any questions concerning purchasing, selling or chartering a yacht, please call **+1(954)274-4435**

TABLE OF CONTENTS

TABLE OF CONTENTS	2
SPECIFICATIONS	3
Basic Information	3
Dimensions	3
Speed, Capacities and Weight	3
Accommodations	3
Hull and Deck Information	3
Engine Information	4
DETAILED INFORMATION	5
OVERVIEW	5
Exclusions	13
Disclaimer	13
PHOTOS	15
CONTACTS	26
Contact details	26
Telephones	26
Office hours	26
Address	26

SPECIFICATIONS

Basic Information

Category: Motor Yacht

Model Year: 2007

Year Built: 2007

Country: United States

Vessel Top: 2363

Fly Bridge: Yes

Cockpit: Yes

Dimensions

LOA: 55' 0" (16.76m)

Beam: 16' 0" (4.88m)

Max Draft: 4' 11" (1.50m)

Speed, Capacities and Weight

Cruise Speed: 21 Kts. (24 MPH)

Max Speed: 25 Kts. (29 MPH)

Displacement: 62000 Pounds

Water Capacity: 200 Gallons

Holding Tank: 100 Gallons

Fuel Capacity: 836 Gallons

Accommodations

Total Cabins: 3

Total Heads: 2

Hull and Deck Information

Hull Material: Fiberglass

Hull Configuration: Modified V-Hull

Hull Color: White

Hull Designer: Marquis

Engine Information

Engines: 2

Manufacturer: Volvo Penta

Model: D12

Engine Type: Inboard

Fuel Type: Diesel

DETAILED INFORMATION

OVERVIEW

VESSEL HIGHLIGHTS

- Factory hard top
- Bridge Air Conditioning
- Galley up
- Large aft deck
- Bow thruster & stern thruster w/ remotes
- Aft lift for dinghy
- New teak decks-Nu Teak
- Underwater lights

VESSEL WALKTHROUGH

The 55 Marquis LS motor yacht was introduced to compete with the Euro look of boats that were being imported to the United States...great lines and flowing windows...The 55 LS not only has a beautiful profile and great looks, but handles very well...easy to dock with bow and stern thrusters...many other great features like bridge ac, bridge grill and aft lift for a dinghy. Jaime Girl has had a great life, as she came from the fresh waters of Tennessee and only been here in South Florida for a year! Jaime Girls owners have upgraded this boat and she shows great...see the list above and make an appointment to come see this beautiful motor yacht!

SALON

- Heavy duty SS aft salon door w/screen slide out
- Designer carpet
- Leather sofa- Beige- w/ recliners at each end
- Two recliner chairs
- Salon blinds
- Aft privacy curtain
- Cocktail table

- Overhead lighting
- Bose stereo speakers-surround sound
- High gloss dark wood paneling throughout
- Entertainment center-Sony receiver/Sony DVD player
- Pop up flat screen TV-recessed
- Storage cabinet near TV
- SAT TV receiver
- Sirius XM head
- Cruisair Air A/C w/ digital controls
- Liquor cabinet to starboard side
- Electrical outlets
- Electrical panels (2)
- Charles inverter
- Storage above to port side

GALLEY

- Beautiful open galley to starboard
- Corian counter top w/ large recessed SS sink & designer faucet
- Storage under counter tops
- Bamboo laminate flooring
- Sub-Zero under counter refrigerator/freezer
- Broan trash compactor
- Tappan SS microwave/convection grill
- Princess 3 burner cooktop
- Cabinet space
- 30 gallon hot water heater
- Electrical outlets

- Exhaust fan

COMPANIONWAY

- Hi gloss dark wood throughout
- Carpet
- Courtesy lights in steps
- Overhead lighting
- Privacy doors to staterooms and heads

MASTER STATEROOM/AFT

- Island queen bed w/ real Posturpedic mattress
- Upholstered headboard
- High gloss dark wood throughout
- Designer bedding and pillows
- Designer carpet- beige
- Malber side by side washer/dryer
- Large windows to P & S w/ blinds
- Nightstands w/ designer lamps and drawer storage
- High gloss dark wood paneling throughout
- Cruisair AC w/ SMX digital controls
- Two dressers w/ mirror
- Large hanging closets- 2
- Overhead headliner
- Sole 20" flat screen TV w/ SAT receiver
- Farenheit DVD & MP 3 player
- Clarion stereo w/ speakers
- Electrical outlets
- CO detector

- Overhead lights
- En-suite head

MASTER HEAD

- Tile flooring
- Vacu Flush head
- Stall shower
- Large window w/ blinds
- Corian counter top w/ molded sink & designer faucet
- Storage below vanity
- Mirrored medicine cabinet
- High gloss dark cabinets
- Towel racks
- Electrical outlets
- AC vent
- Exhaust fan

VIP GUEST STATEROOM/FORWARD

- Queen berth w/ upholstered headboard
- Bomar overhead hatch
- Storage below bed
- Storage P & S above bed
- Designer bedding and pillows
- Carpet
- Drop down TV with DVD
- High gloss dark wood throughout
- Reading lights
- Cruisair AC w/ digital controls and vent

- Hanging lockers P & S
- En-suite head

VIP GUEST HEAD

- Circular stall shower in port head area w/ Corian counter top/vanity/sink & mirror
- Tile flooring
- Vacu Flush head
- Corian counter top w/ recessed sink & designer faucets in each
- To starboard head is a toilet, Corian counter/vanity and sink
- Mirrored medicine cabinets in each
- Port hole in each
- Overhead lights
- A/C vents
- Exhaust fan

GUEST STATEROOM

- Side by side berths
- Designer bedding and pillows
- Carpet
- Hanging locker
- High gloss dark wood
- Reading light
- Overhead lighting
- Stereo & speakers
- Electrical outlets
- Drop down TV w/ DVD player
- Smoke detector
- Port hole

- Cruisair Air A/C w/ digital controls
- En-suite head

AFT DECK

- Teak decks- New-2014
- Molded long aft seat w/ cushions
- Aft door on transom to crew area and engine room
- Heavy duty Stainless Steel salon door
- Storage areas P & S
- Engine room access in sole
- SS heavy duty cleats
- Steps up and down to swim platform
- New teak on swim platform
- Fresh water shower
- Wash down
- Courtesy lighting
- Outlets for TV/telephone
- SS rails
- Aft camera
- Molded bridge steps
- Scuppers
- Dockside water inlet
- Aft lift for dinghy
- Overhead lights
- Overhead speakers
- Access to lazarette
- Extended overhand for aft deck

- Fuel fill caps P & S
- Storage garage aft of deck on platform & engine access
- Glendenning shore power cord-2 / 50 amp cords

FLYBRIDGE & HELM

- Volvo engine displays
- Wet bar w/ Corian counter top, SS sink & storage
- Gaggenau grill
- Raritan icemaker
- Nova Kool refrigerator
- AC on bridge
- Teak decks on bridge- New 2014
- Two helm seats
- Volvo single lever controls
- Electronics package under recessed electronics box
- Dual helm chairs
- Aft seating w/ cushions
- Horn
- Trim tabs
- Windlass remote
- 12V adaptor
- Ritchie 5" compass
- ACR spotlight controls
- Full canvas enclosure
- Bow thruster-Hydraulic Stern Thruster- electric w/ remotes
- Full enclosure
- Clarion stereo w/ speakers

ELECTRONICS

- Raymarine E120 monitors- 2
- Raymarine radar
- Raymarine chart plotter/GPS/depth
- Furuno RD30- depth/speed
- Raymarine Smart Pilot ST6002 autopilot
- Raymarine Ray240 VHF radio
- Raymarine Loud speaker
- Clarion stereo w/ speakers

HULL & DECK

- White hull sides
- Hard top w/ enclosure
- Bow pulpit w/ SS rails
- Forward sun pad area
- Teak deck- New
- Bow thruster-hydraulic Stern Thruster- electric
- Trim tabs
- Windlass w/ remote at helm
- Aft lift for dinghy
- Dockside water inlet

ENGINE ROOM & MECHANICAL

- Twin Volvo Penta D12/715 HP diesel engines/432 hours
- ZF gears
- Kohler 17.4 kW diesel generator
- Fireboy fire suppression bottle
- Oil change system

-
- AC raw water pumps
 - Hot water heater-
 - Engine room blower
 - Dripless shaft logs
 - Overhead lighting
 - Charles battery chargers-20 Amp & 60 Amp
 - Racor filters
 - Fuel water separators
 - Fuel tanks
 - Bilge pumps

ELECTRICAL

- Kohler 17.4kW diesel generator
- 12V/24V/120V/240V 50 amp system
- Electrical panel and sub panel
- Charles battery chargers
- Battery parallel
- Shore cords w/ cable master
- Battery bank

EXCLUSIONS

Owners personal belongs, clothes, fishing rods, tools and art work....please inquire about full exclusion list.

Exclusions

Owner's personal belongings.

Disclaimer

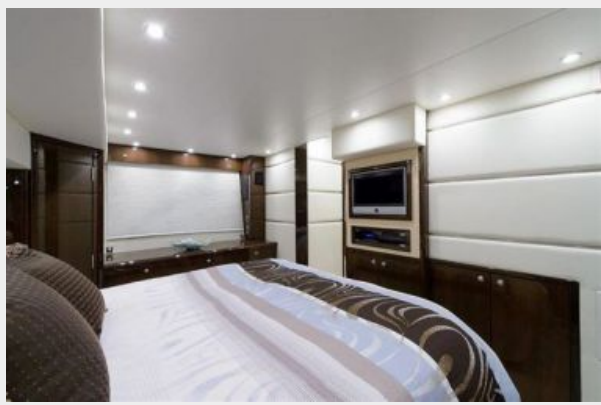
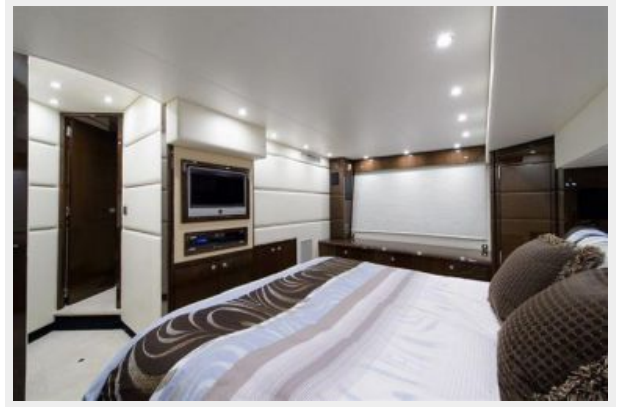
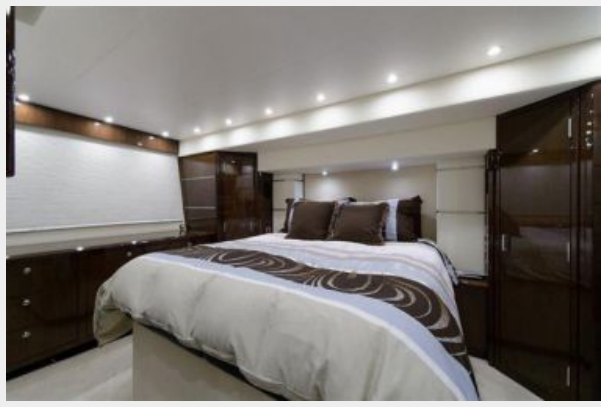
The Company offers the details of this vessel or yacht in good faith but cannot guarantee or

warrant the accuracy of this information nor warrant the condition of the vessel. A buyer should instruct his representatives, agents, or his surveyors, to investigate such details as the buyer desires validated. This vessel or yacht is offered subject to prior sale, price change, or withdrawal without notice.

PHOTOS





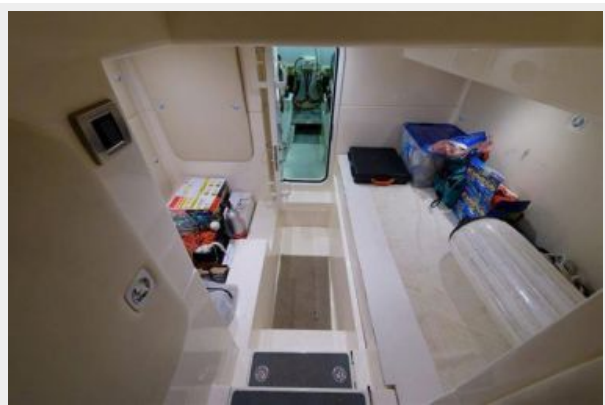


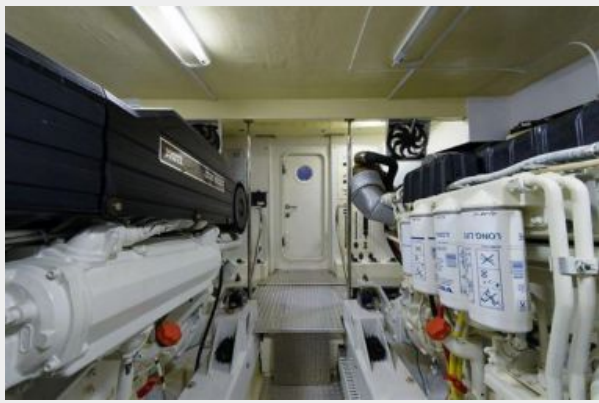


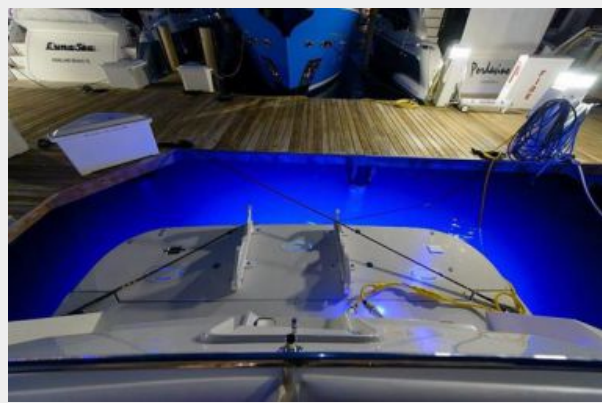














CONTACTS

Andrey Shestakov, leading yacht broker of the sales department of Shestakov Yacht Sales Inc. Shestakov Yacht Sales Inc., the official representative of the Miami/Fort Lauderdale FL headquarters.

Contact details

Email: andrey@shestakovyachtsales.com

Web: shestakovyachtsales.com/en/

Telephones

USA: +1(954)274-4435

Office hours

Monday – Saturday: **9:00 - 21:00** EDT

Sunday: **closed**

Address



Harbour Towne Marina, 850 NE 3rd St,
STE 213, Dania, FL 33004