

KUIE II — SEA RAY



Судостроитель: SEA RAY

Год постройки: 2008

Модель: Моторная яхта

Цена: ЦЕНА ЯХТЫ ПО ЗАПРОСУ

Местонахождение: United States

Длина общая: 58' 0" (17.68m)

Ширина: 16' 0" (4.88m)

Макс. осадка: 4' 3" (1.30m)

Купить KUIE II — SEA RAY а также выбрать подходящую вам яхту из нашего каталога яхт вам поможет опытный яхтенный брокер Андрей Шестаков. На сегодняшний день компания Shestakov Yacht Sales Inc. имеет большое количество яхт в собственном списке продаж, а также тесно сотрудничает со всеми крупными яхтенными производителями по всему миру.

Для того чтобы купить яхту KUIE II — SEA RAY а также проконсультироваться по любому вопросу связанному с покупкой, продажей, чартером яхт позвоните по телефону **+7(918)465-66-44**.

ОГЛАВЛЕНИЕ

ОГЛАВЛЕНИЕ	2
ХАРАКТЕРИСТИКИ	5
Обзор	5
Основная информация	5
Размеры	5
Скорость, вместимость и масса	5
Размещение	5
Корпус и палуба	6
Информация о двигателе	6
ПОДРОБНОЕ ОПИСАНИЕ	7
Highlights	7
Hull and Deck Features	7
Cockpit Features	8
Bridge Features	9
Cabin Features	10
Salon	11
Dinette	12
Galley	13
Master Stateroom	14
Master Head	14
Forward Stateroom	15
Guest Stateroom	15
Guest Head	15
Control Station	16
Electronics	17
Electrical System	17
Generator	18
Air Conditioning/Heating	18

Engine Room	18
Fuel System	19
Water & Waste Systems	20
Underwater Gear	20
Upgrades	21
Recent Service	21
Disclaimer	22
Исключения	22
Отказ от ответственности	22
ФОТОГРАФИИ	23
Salon	23
Galley	23
Master Stateroom	23
Helm	23
Salon	23
Salon	23
Salon	24
Galley	24
Dinette	24
Dinette	24
Dinette	24
Master Stateroom	24
Master Stateroom	25
Master Stateroom	25
Master Head	25
Forward Stateroom	25
Forward Stateroom	25
Guest Stateroom	25
Guest Head	26

Guest Head	26
Washer-Dryer	26
Helm	27
Sun Pad	28
Profile	29
КОНТАКТЫ	31
Контактная информация	31
Телефоны	31
Время работы	31
Адрес	31

ХАРАКТЕРИСТИКИ

Обзор

This Sea Ray 580 Sedan Bridge is a very well maintained, beautiful boat.

- Motors serviced November 2014
- Bottom paint April 2014
- Bow and Stern Thruster
- Yacht Controller Joystick system
- Loaded with upgrades

Основная информация

Тип судна: Моторная яхта

Подкатегория: Flybridge

Модельный год: 2008

Год постройки: 2008

Страна: United States

Верх: Hardtop

Открытая палуба мостика: Да

Размеры

Длина общая: 58' 0" (17.68m)

Ширина: 16' 0" (4.88m)

Макс. осадка: 4' 3" (1.30m)

Скорость, вместимость и масса

Вместимость воды: 150 Gallons

Вместимость сточного бака: 68 Gallons

Объем топливного бака: 700 Gallons

Размещение

Всего кают: 3

Всего ком. состава: 2

Корпус и палуба

Материал корпуса: Fiberglass

Материал палубы: Fiberglass

Комплектация корпуса: Deep Vee

Цвет корпуса: Black

Информация о двигателе

Двигатели: 2

Производитель: MAN

Модель: MAN 900HP

Тип двигателя: Inboard

Тип топлива: Diesel

ПОДРОБНОЕ ОПИСАНИЕ

Highlights

Standard bridge refrigerator

Bridge air conditioning

Twin thigh-rise helm chairs with up/down feature

Bose® Lifestyle 48 interior stereo system

Full beam master stateroom with 20" LCD flatscreen TV with head & shower en suite

Innerspring mattresses in master and forward stateroom

Standard sofa with pullout bed

Solid-wood dinette tabletop

Fully equipped galley with refrigerator and freezer with built-in icemaker, microwave, and Krups® coffeemaker

Standard tile flooring in guest head

Two full heads with separate showers

Fiberglass hardtop with 20x20 hatch and electronics box

Bridge Isinglass enclosure with U-zips

Standard bow thruster

Dripless shaft logs with extra seal carrier kit

High-water bilge pump and alert system at helm

Potable water manifold system with individual shutoff valves

Hull and Deck Features

Bow Rail, 316 Stainless steel w/welded stanchions

Bollard Style - Stainless Steel (8)

Deck Fill Plates, Stainless Steel

Deck Rails, 316 Stainless Steel

Gel Coat, Arctic White Graphics, Striping

Handrails, 316 Stainless Steel

Hatch, Deck Vent - Translucent w/Locks & Sky Screen Cover (Trapezoid)

Hull Windows, Stainless Steel (3 Fixed)

Lights, Navigation Portlights, Stainless Steel (5 Fixed, 1 Opening)

Resin, High-Performance Vinylester Rub Rail, PVC w/Stainless-Steel Insert

Storage, Transom Wall (For Fenders & Gear)

Swim Platform, Integral w/Concealed

Stainless-Steel Three-Step Swim Ladder w/Integral Grab Handle

Thru-Hull Fittings, Stainless Steel

Vent System, Engine Room - Integral

Windshield, Tempered/Tinted Curved

Glass (Bonded-In) w/Deck Side Windows

Canvas (Sunbrella®): Aft Curtain Hardtop Enclosure Windshield Shades

Windlass System: Anchor, Galvanized

Anchor Chain Storage w/Gas- Assisted Hatches Anchor Chute, Stainless Steel

Anchor Washdown Spigot w/Hose Windlass, Chain w/Foot Switches

Certifications: Meets Applicable USCG & ABYC

Standards NMMA Yacht Certification

Cockpit Features

Carpet Liner, Snap-In

Door, Cabin Entry (Sliding & Lockable)

w/Screen - Stainless Steel

Door, Transom - Acrylic

Floor Liner, Self-Bailing Fiberglass

w/Gas-Assisted Engine Room

Service Hatch

Handrails, 316 Stainless Steel

Lighting, Indirect 24V

Outlet, 120V GFI Protected

Seating, Aft Bench (Recessed into

Transom Wall)

Steps, Boarding (Mold-In)

Storage, Side Panels - Port &

Starboard

Bridge Features

Beverage Holders (4)

Carpet Liner, Snap-In

Handrails, 316 Stainless Steel

Hardtop, Fiberglass w/Overhead

Storage, Vent Hatch & Overhead

Lighting w/Electronic Dimmer & Red

Night Lighting

Hatch, Bridge Access

Icemaker, 120V

Lighting, Indirect 24V

Outlet, 12V Accessory

Outlet, 120V GFI Protected

Outlet, Cable TV

Refrigerator, 120V

Seating, Aft Bench w/Storage Below

Seating, Helm (2) w/Armrests,
Reclining Backrests, Stainless Steel
Fold-Down Footrests & Heavy-Duty
Pedestals w/Slides, Swivels &
Pneumatic Vertical Adjustment

Seating, U-Shaped w/Storage
Below - Forward

Ship's Bell

Steps, Molded Bridge Access
w/Storage Below

Stereo, Clarion® 12V AM/FM Single CD,
Sirius® Satellite Receiver w/Antenna,
MP3 Port, 6-Disc CD Changer,
Amplifier, Subwoofer, Speakers (4 -
Bridge, 2 - Cockpit) & Digital Bridge
Remote Control

Storage, Drawer - Helm

Storage, Forward Bridge Access

Table, Fiberglass w/Teak Insert

Wet Bar w/Sink, Faucet, Stainless-Steel

Handrail, Trash Receptacle w/Trash

Chute & Storage Below - Starboard Forward

Cabin Features

Blinds, Wood

Carbon Monoxide Monitors

Carpet, Masland® 55-Ounce 100%

Stainmaster BCF Nylon w/Dupont®

Advanced Teflon Repel System

Carpet Runners, Interior (Sunbrella®)

Curtains, Custom - Throughout

Doors, High-Gloss Solid Wood

Handrails, Stainless Steel

Lighting, 120V Xenon (Low-Voltage AC)

Lighting, 120V Indirect

Lighting, 24V Xenon

Lighting, 24V Indirect

Outlets, 12V Accessory

Outlets, 120V GFI Protected

Outlets, Phone

Outlet & Switch Plates - Satin Nickel

Finish

Pillows, Accent

Storage, In-Floor

Vacuum System, Central - Single

Inlet (Beam®)

Wood Interior Package, (High-Gloss

Veneer) - Light Cherry or Dark Cherry

Salon

End Table w/Solid-Surface Top

Entertainment Center

- Bose® Lifestyle 48, 5.1-Channel

Home Theater System

Includes: Bose Media Center

(Interfaced w/Sirius® Satellite

Receiver) 4-Jewel Cube

Speakers, Horizontal Center

Channel Speaker & Acoustimass module

- Storage Cabinet - CD & DVD

- TV, 32" Flatscreen LCD HDTV

- RTI-T3 Universal Remote Control

Ottomans, (2) Movable w/Dual-Purpose

Tops (Cushions or Cocktail Tables) &

Storage Below

Seating, Crescent-Shaped Sofa

(Ultraleather HP™) w/Storage Below

- Port

Seating, Curved Sofa (Ultraleather HP)

w/Storage Below - Starboard

Dinette

Flooring, Wood

Seating, Curved (Ultraleather HP)

w/Storage Below

Storage, Bottle Racks

Storage Cabinets w/Slide-Out Drawers &

Glass Racks

Table, Dinette w/High-Gloss Wood

Surface, Sliding Base & Drawer

Storage Cabinet Below

Galley

Coffeemaker, 120V

Countertop, Solid Surface w/StainlessSteel

Sink, Single-Lever Grohe®

Faucet w/Pullout Spray Head & SolidSurface

Sink Cover

Flooring, Wood

Freezer, Under-Counter w/Icemaker &

Stainless-Steel Front (Sub Zero) - 120V

Microwave/Convection Oven w/StainlessSteel

Face

Power Vent, 24V

Refrigerator Under Counter

w/Stainless-Steel Front (Sub Zero) -

120V

Storage, Cabinets - Lower

Storage, Drawers w/Cutlery Insert

Stove, Two-Burner (Surface Mounted)

w/Safety Rail - 240V

Trash Receptacle - Slide-Out

Master Stateroom

Bed, Queen-Size w/Innerspring mattress

Pillows, Sheets, Coordinated Spread

Carpeted Storage Below w/Gas-Assisted Hatch

Hanging Lockers (4) w/Lights & Shelves

Entertainment Center

- Bose® Lifestyle 3-2-1, 2.1-Channel

Home Entertainment System

Includes: Bose Media Center,

2-Gemstone Speaker Arrays & Accoustimass Module

- TV, 26" Flatscreen LCD

Mirrored Privacy Door

Night Stands (2) w/Drawer Storage below

Storage, Dresser w/Drawers & Lift Top Vanity

Master Head

Bath Accessories - Towel Bar, Towel Ring

Bathroom Tissue Holder, Soap Dish & Robe Hook

Flooring, Wood

Handrails, Stainless Steel

Head, Large (VacuFlush®) - Electric

Power Vent, 24V

Robe Hook, Head Door

Skylight, Circular

Shower w/Seat, Adjustable Shower Wand & Acrylic Door

Storage, Medicine Cabinet - Mirrored

Vanity w/Solid-Surface Countertop

Solid-Surface Sink w/Grohe® Faucet

Storage Below w/Trash Receptacle

Forward Stateroom

Bed, Queen-Size w/Innerspring mattress

Pillows, Sheets, Coordinated Spread & Drawer Storage

Hanging Locker w/Light - Starboard

Mirrored Rope Locker Bulkhead Storage

Cabinet w/Drawers - Port Storage, Side Shelves

TV, 20" Flatscreen LCD w/DVD Player

Guest Stateroom

Upper & Lower Bunks w/Mattresses, Pillows, Sheets

Coordinated Spreads & Carpeted Storage Below (Lower Bunk)

Hanging Locker w/Light

Storage, Gunwale Cabinet

Storage, Shelf

Washer/Dryer Combo w/Upper

Storage Cabinet

Guest Head

Towel Rings (2)

Bathroom Tissue Holder

Tile Flooring

Handrails, Stainless Steel

Head, Large (VacuFlush) - Electric

Mirrored Privacy Door

Robe Hook, Head Door

Shower w/Seat, Adjustable Shower Wand & Shower Curtain

Storage, Medicine Cabinet - Mirrored

Vanity w/Solid-Surface Countertop,

Solid-Surface Sink w/Grohe® Faucet

Storage Below sink w/Trash Receptacle

Control Station

Bow Thruster, 24V

Compass

Emergency Start System - Engines

Horn, Air - 24V

Instrumentation:

- 6.3" Color LCD Display w/Auto

Dimming & Enhanced Contrast in Daylight

(Includes: Engine & Gear Box Data, Graphic Presentation of Analogue Round Instruments, Display of Alarm Status & Fuel Flow) (2)

- Fuel Gauges (2)

Instrument Panels - High Gloss

Shift & Throttle Controls

Electronic Spotlight w/Dual Halogen Bulbs -

Remote-Controlled (ACR®)

Steering, Power-Assisted w/Tilt Wheel

Switch Panel, Backlit - High Gloss

Switches, Illuminated Weatherproof

Rockers & Electronic Dimmer Control

Systems Monitor, Digital LCD - for Pump Monit

Electronics

Raymarine® E120 - 12.1" Color

LCD Radar/GPS/Chartplotter w/Integrated 4kW Open Array

Scanner - Primary Display

Sea Ray Navigator™ III - 12.1"

Sunlight-Viewable Touch-Screen

Color LCD GPS/Chartplotter w/Water Temp & Depth Data – Auxiliary Display

Autopilot, Raymarine Raypilot ST 8002

VHF Radio, Raymarine 240 w/Remote Speaker & 8' Fiberglass Antenna

Electronics Circuit, 12V/50 Amp

Electrical System

Batteries, 8-D w/Boxes (4) & Group 27 For Genset (1)

Battery Charger/Converter, 120V/10 Amp/12V

Battery Charger/Converter, 240V/50 Amp/24V

Battery Charger Overcurrent Protection

Battery Equalizer, 60 Amp (2)

Battery Solenoid Switches, 12V (2) & 24V (2)

C-Phone System - Internal Station-to Station Intercom w/Ship-to-Shore Ability from all Phone Outlets (w/Phone Shore Cord Plugged In)

Cable Television System w/Inlet

(Includes Phone Inlet & Phone Shore

Cord), TV Shore Cord, Coax Outlets,
Gain Control & Antenna
Panel, Circuit Breaker - Remote
Panel, DC Main Breaker
Panel, Main Distribution - AC
Panel, Main Distribution - DC
Shore Power, Cablemaster (Glendinning)
240V/50 Amp w/75' Cord & Wireless
Remote (Cablemaster Not Available
w/220V/50 Cycle Shore Power)
Transformer, Shore Power Isolation
120V/50 Amp, 240V/50 Amp
Wiring, Color-Coded w/Chafe Protection

Generator

17.0 kw Onan - Diesel (240V/60 cycle) w/sound shield, remote start, muffler, closed cooling, fuel filter, seacock & seawater strainer

Air Conditioning/Heating

Cabin- Zone-Controlled Reverse-Cycle System, 240V (49,000 BTU)
Custom Integral Vent System
Bridge - Reverse-Cycle System, 240V (24,000 BTU)

Engine Room

Bilge Pumps, 24V Automatic (2)
Bilge Pumps, 24V Automatic High-Water (1 Bilge, 1 Cabin)

Blowers, 24V Bilge (2)

Engine Drip Sumps

Exhaust, Power Pac/Lift System

Mufflers

Fan, Oscillating - 120V

Fire Extinguishers

Fire Suppression System - Automatic w/Diesel Shutdown, Override & Manual Pull

Flooring, Fiberglass Diamond Plate

Freshwater Cooling

Gel-Coated Engine Room

Insulation, Engine Room - 2" w/Loaded

Vinyl Barrier

Ladder, Stainless Steel -

Removable/Swing-Away

Light, Cord Reel

Lighting, 24V

Oil Changer System - Engines,

Transmissions & Generator

Storage Rack

Fuel System

Crossover Fuel System (Generator Only)

Fuel Filters (3) (Racor®) (2) 75-1000MAX (Dual) for Engines (1)

500MA for Generator

Fuel Lines, USCG - Type A-1

Fuel Tanks, Aluminum w/Ultrasonic Sending Units & Manual Shut-off Valves

Water & Waste Systems

Water System:

Freshwater Washdown Spigots w/Hoses - Transom, Engine Room & Anchor Locker

Pressure Water System w/24V Pump & Charcoal Filtration System

Shower, Cockpit - Hot & Cold

Water Heater, 240V (20-Gallon)

Water Inlet, Dockside

Water Manifold System

Waste Systems:

Central Drain System

Head System (VacuFlush®) - Electric Holding Tank Level Indicators - MDP & Heads

Holding Tank w/Dockside Pump-Out (68-Gallon)

Macerator w/Seacock Interlock System

Sump Box w/Automatic Pump & Hinged

Service Lid

Underwater Gear

Bonding System w/Zinc Hull Plate

Propeller Shafts, 2 1/2" Stainless Steel (2)

- Aquamet 22

Propellers, Veem® Nibral 4-Blade Cup

Rudders, Manganese-Bronze w/Stainless-Steel Posts

Seacocks on all Underwater Fittings

Seawater Strainers

Shaft Logs, Dripless w/Extra Seal

Carrier Kit

Struts, Manganese-Bronze

Trim Tabs, Hydraulic

T-MAN 900 CRM V-8 Diesel Inboards (T-861 hp - 642 kW)

Upgrades

Anchor - Stainless Steel (In Lieu of Galvanized)

Oak flooring

Yacht Controller Joystick System

Stainless Steel anchor

Salon sofas custom alteration to make 5" wider

Aft cockpit sun shade

Zippered opening on bridge isinglass

Transom 110 V outlet

Fish finder

Live well pump

Stern thruster

Black out screen over forward windshield

TV on the bridge

Camera on bridge, salon, aft deck, and engine room

TV in 3rd stateroom

Intercom in all staterooms

Recent Service

April 2014

New hydraulic lines on swim platform

New bow & stern thruster propellers

New bow thruster batteries

Bottom paint

Wax hull sides

New port motor battery

Nov 2014

Service main engines & generator. Oil & filter, primary & secondary fuel filters.

Replace gen impeller & zincs

Service gears, oil, filter, zincs

Disclaimer

The Company offers the details of this vessel in good faith but cannot guarantee or warrant the accuracy of this information nor warrant the condition of the vessel. A buyer should instruct his agents, or his surveyors, to investigate such details as the buyer desires validated. This vessel is offered subject to prior sale, price change, or withdrawal without notice.

Исключения

При продаже яхты исключаются личные вещи владельца.

Отказ от ответственности

Компания предоставляет описание судна или яхты добросовестно, но не может гарантировать точность этой информации, а также не ручается за техническое состояние. Покупатель должен проинструктировать своих агентов или оценщиков исследовать представленную информацию более подробно, по собственному желанию. Продажа судна или яхты, изменение цены или снятие с продажи будет происходить без предварительного уведомления.

ФОТОГРАФИИ

Salon



Galley



Master Stateroom



Helm



Salon



Salon



Salon



Galley



Dinette



Dinette



Dinette



Master Stateroom



Master Stateroom



Master Stateroom



Master Head



Forward Stateroom



Forward Stateroom



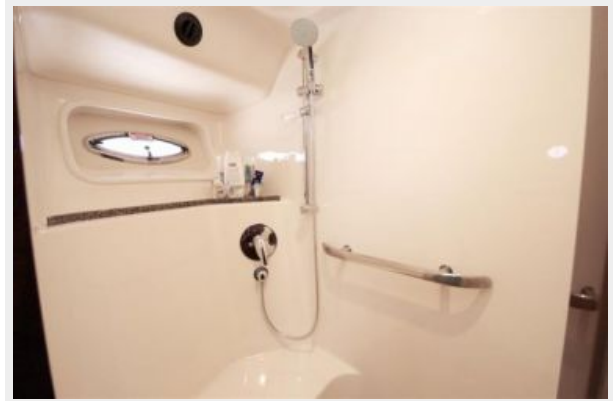
Guest Stateroom



Guest Head



Guest Head



Washer-Dryer



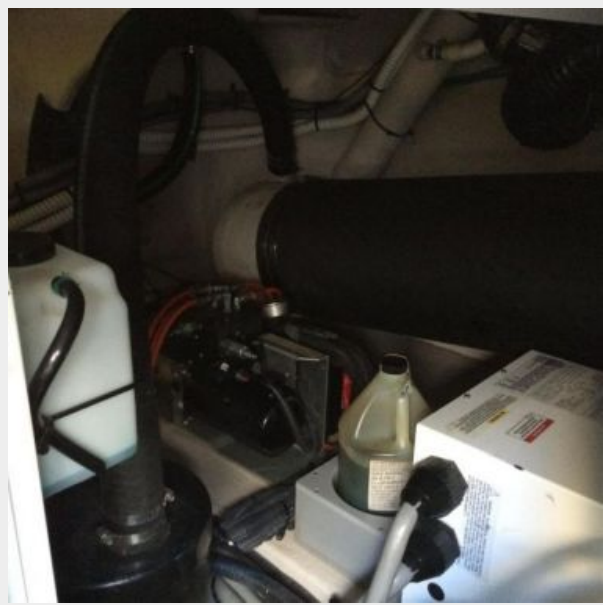
Helm





Sun Pad





Profile





КОНТАКТЫ

Андрей Шестаков (Andrey Shestakov) – ведущий яхтенный брокер отдела продаж яхт и судов компании Shestakov Yacht Sales Inc. Официальный представитель Shestakov Yacht Sales Inc. для русскоговорящих клиентов в центральном офисе компании в Майами/Форт Лодердейл/Флорида/США.

Контактная информация

Email: andrey@shestakovyachtsales.com

Web: shestakovyachtsales.com

Телефоны

Краснодарский край: **+7(918)465-66-44**

США, Майами, Флорида: **+1(954)274-4435**

Время работы

Понедельник – Суббота: **9:00 - 21:00**
EDT

Воскресенье: **Закрито**

Адрес



Harbour Towne Marina, 850 NE 3rd St,
STE 213, Dania, FL 33004