

HIGH MAINTENANCE — VIKING



Builder: VIKING

Year Built: 2002

Model: Sport Fisherman

Price: PRICE ON APPLICATION

Location: United States

LOA: 65' 0" (19.81m)

Beam: 18' 9" (5.72m)

Min Draft: 5' 6" (1.68m)

Cruise Speed: 31 Kts. (36 MPH)

Max Speed: 37 Kts. (43 MPH)

Our experienced yacht broker, Andrey Shestakov, will help you choose and buy a yacht that best suits your needs **High Maintenance — VIKING** from our catalogue. Presently, at Shestakov Yacht Sales Inc., we have a wide variety of yachts available on our sale's list. We also work in close contact with all the big yacht manufacturers from all over the world.

If you would like to buy a yacht **High Maintenance — VIKING** or would like help answering any questions concerning purchasing, selling or chartering a yacht, please call **+1(954)274-4435**

TABLE OF CONTENTS

TABLE OF CONTENTS	2
SPECIFICATIONS	5
Overview	5
Basic Information	5
Dimensions	5
Speed, Capacities and Weight	5
Accommodations	6
Hull and Deck Information	6
Engine Information	6
DETAILED INFORMATION	7
Accommodations	7
Featured Options	8
Upgrades 2012/2013	9
Electronics	10
Electrical Equipment	11
Mechanical	11
Disclaimer	12
Exclusions	12
Disclaimer	12
PHOTOS	13
Exterior	13
Exterior	13
Bow Pulpit	13
Transom	13
Foredeck	14
Foredeck	14
Foredeck	14
Hardtop	14

Flybridge	14
Flybridge	14
Flybridge	15
Enclosed Flybridge	15
Enclosed Flybridge	15
Enclosed Flybridge	15
Enclosed Flybridge	15
Enclosed Flybridge	15
Enclosed Flybridge	16
Enclosed Flybridge	16
Salon	16
Salon	16
Salon	16
Salon	16
Salon	17
Salon	17
Galley	17
Galley	17
Companionway	17
Washer and Dryer	17
Master Stateroom	18
Master Stateroom	18
Master Stateroom	18
Master Stateroom Head	18
Master Stateroom Head	19
VIP Stateroom	19
VIP Stateroom Head	19
VIP Stateroom Head	19
Guest Stateroom	20

Guest Head	20
Guest Stateroom	20
Guest Stateroom	20
Engine Room	21
Engine Room	21
Engine Room	21
Engine Room	21
Engine Room	22
Engine Room	22
CONTACTS	23
Contact details	23
Telephones	23
Office hours	23
Address	23

SPECIFICATIONS

Overview

This 2002 Viking 65 Enclosed Bridge has been captain maintained and is in fantastic condition. "High Maintenance" has gone through recent upgrades and overhauls to ensure you are ready to enjoy her with all of the latest technology aboard. From original build to now, this Viking 65 Enclosed Bridge sets the bar for pre-owned Vikings. "High Maintenance" boasts a 4 stateroom, 4 head layout and will surely excite any convertible or cruising buyer. The owner's of this Chicago based fresh water Viking 65 Enclosed Bridge have decided to take the boat to Florida for the winter. They just can't stand to be without her while they escape the winter months!

Basic Information

Category: Sport Fisherman

Sub Category: Convertible

Model Year: 2002

Year Built: 2002

Country: United States

Vessel Top: Enclosed

Fly Bridge: Yes

Cockpit: Yes

Dimensions

LOA: 65' 0" (19.81m)

Beam: 18' 9" (5.72m)

Min Draft: 5' 6" (1.68m)

Speed, Capacities and Weight

Cruise Speed: 31 Kts. (36 MPH)

Max Speed: 37 Kts. (43 MPH)

Water Capacity: 350 Gallons

Holding Tank: 150 Gallons

Fuel Capacity: 1850 Gallons

Accommodations

Total Cabins: 4

Total Heads: 4

Hull and Deck Information

Hull Material: Fiberglass

Engine Information

Engines: 2

Manufacturer: MTU

Model: 16V-2000

Engine Type: Inboard

Fuel Type: Diesel

DETAILED INFORMATION

Accommodations

Salon

The salon features a comfortable, U-shaped leather sofa centered by a beautiful high gloss teak table. The sofa faces a custom, pop up TV, with SAT TV receivers, a blu-ray player and Bose surround sound speakers throughout the salon. There is a Whirlpool gold cocktail icemaker, custom storage for bottles and several storage drawers on either side. Just above the ice maker is the main circuit breaker panel.

Galley

The galley features a two under counter Subzero refrigerator drawer units and one Subzero freezer drawer unit. The granite counter tops are beautifully encased by high gloss teak rails. The black sink includes a garbage disposal. Other appliances include: Sharp Carousel Microwave, Kenmore 4 -burner stove, Kenmore Oven and Kenmore Dishwasher. The storage in the galley is abundant with incredibly deep pull out drawers and spacious cabinets. Just forward of the galley is a huge dry storage area that was customized by the owner. Opposite the galley is the dinette which seats six people comfortably around a teak table inlaid with granite and two large storage cabinets with pull out drawers. Storage can also be found underneath the dinette couch.

Companionway

Stepping down from the galley you will find a full size washer and dryer to starboard with custom storage adjacent for cleaning supplies. The washer and dryer units were recently replaced with Maytag units.

Layout

"High Maintenance" boasts a 4 stateroom, 4 head layout. The stbd stateroom, which in the standard layout was bunks, was upgraded in build to a single bunk with a larger berth and extensive storage beneath the bed. The Master stateroom features an island queen with enormous closets on the aft bulkhead. A custom dressing table was built and there is a Bose 321 system for surround sound in the cabin. The forward stateroom is laid out with the optional cross over berths. Aft of the Master stateroom is the crew cabin with bunks and an ensuite head with engine room access.

Enclosed Flybridge

The air conditioned, (2) A/C units, Enclosed Flybridge can be entered either from the salon via the spiral staircase or from the outside deck ladder. The helm area is appointed with two double-wide Stidd benches on either side of the captain as well as a high-back Stidd centerline on the helm. The helm console is large and has ample storage underneath with doors on both sides of

the console to make the entire area easily accessible. Aft is a slightly raised, L-shaped sofa and coffee table with icemaker, wet bar and LCD TV opposite on starboard. Outside of the out-swing flybridge door you will find two control areas, one facing forward and a custom one facing aft.

Featured Options

"High Maintenance" was built to the highest level of specification and included every possible upgrade at build. Items of note are:

Alfa Laval Fuel polisher

Fuel priming pumps

Oil change system

Dual racors and gauges in engine entryway

Aqua Whisper Sea Recovery Water Maker

Pura 4 stage water filtration & purifying system

Solid wood raised panel cabinets

Fully equipped galley with 4 ring stove top, oven, microwave and dishwasher.

Whirlpool high volume ice maker in Salon

Crushed Ice Maker (Eskimo 600 pounds per 24 hrs)

Aft Deck freezer & step cooler 5 deck fish wells & additional transom fishwell

Extra helm station on upper aft deck and lower aft deck (4 station set up)

Life Raft (Recent Service)

Roof mounted e-Pirb with static release

ABT TRAC variable speed bow thruster

Rupp Marine Outriggers w/ Electric Teaser Reels

Marquipt 1500lb davit with hydraulic lift and rotation

Stidd Luxury High Back Admiral helm seat and 2 Stidd additional bench seats at helm

White power cords

Props Tuned 2012, 'Propspeed' on props, struts and rudders.

Spare set of Veem props on board in aft bilge

Electronic trolling valves

Baby ostrich headliner throughout interior and enclosed flybridge

Genuine leather upgraded L-shaped sofa

Orthopedic mattresses in all staterooms

Head ceiling mirrors in all three heads

Dimmer switches on salon, dinette, galley and companionway switches

Vanity at entrance to master stateroom

One piece shower door in master stateroom head

Auto salon door

Stainless steel gas shocks on cockpit sole hatches (5)

Oval exhausts Kiddie rail half way between rocket launcher rail and flybridge deck

Air line from engine room compressor to dockside utility box in cockpit

Upgrades 2012/2013

Interlux 2000E Epoxy Paint on hull bottom (6 coats)

Interlux Micron Extra Bottom Paint (3 coats in 2012, 1 coat 2014)

Complete new Bose Audio system throughout entire vessel and all audio systems integrated: Salon, Aft Deck, 4 bedrooms, and Helm. Flat screen tv's throughout.

New ULine refrigerator in Helm

New Water Heater

Entire aft deck plumbing including overboard discharge pumps for fish/bate wells replaced

New Aircon 30,000btu compressor unit for salon

Glendining Cable Master motors, relays, switches replaced

New Under water lights (6 total) - 4 Sea Vision SV42 wide array and 2 Sea Vision SV20 directional pointer beams.

New aft deck courtesy lights with dimmer function New Transom & Shaft Anodes – Aluminum

(spare sets on board also)

New 'Guest' grounding plates & grounding wiring in lazarette

New Carpet throughout entire boat

New Isoboost 50 Isolation transformers (x2)

Charles 5000 Series 24vdc Battery Charger

New AGM Batteries 8A31DT

New mattresses- Master (pocket coil), Fwd Bed, Crew Quarters (x2)

New Maytag Washer & Dryer

New Bilge Pumps and float switches

New Nav Lights replaced lights on roof mast

New fresh water 24VDC and spare New fresh water 110V on board

New aft deck wash down pump

New Circulation Fans in engine room

New blower extractor fans in bathrooms

New overboard discharge pumps, livewell water pumps and plumbing drains from all aft deck fish boxes

New sanitation system throughout including 4 Vacuflush vacuum generators, "Odor Safe Plus" sanitation hose, over board Macerator, Y valves etc.

New Air Conditioning sea water pump (spare on board)

Electronics

Full new navigation electronics package in 2009 with further upgrades in 2013 & 2014: Furuno BB NavNet 3D (2009)

2 x Furuno 12" Multifunction Displays (2009)

FLIR Navigator infrared camera (2009)

Garmin GPS Map 4208 Backup (inland waterways chart package also) (2009)

Furuno FA50 AIS (2009)

Furuno BBWX1 Sirius satellite/weather (2009)

Simrad auto pilot control system (2009)

Elbex Camera System- Engine room (x2) & Aft deck PTZ camera (2009)

2 x iCom M504 VHF radios on helm, 1 Sea Talk VHF radio in Salon (2009)

KVH M7 Dome Satellite TV (2009)

Sat Phone

2 x Raymarine i70 4" multi function displays (2012)

6 Foot Open Array Furuno Radar (2012)

Search Light ACR RCL 600 (New 2013)

2 x 19" Nauticomp Screens (2014) hooked up to Furuno BB NavNet 3D

Electrical Equipment

Onan 27.5 kw generator with 2689 hours

Onan 21.5 kw generator with 2638 hours

Generator gauge package with remote start/stop at helm

Mechanical

Generators overhauled: New hoses, fuel lines, fuel pumps, water pumps, heat exchangers, coolant, oil, exhaust manifolds, breakers, valve lash and replace output voltage regulators on both generators

Full Coolant flush on mains and new coolant (2012)

Transmission fluid replaced (2013)

Replaced all engine sensors (2012)

Various engine hoses etc, replaced as needed recently

Replaced both ERM's on both engines (2012)

New Turbo on Port engine (2011)

New pump on Stbd transmission (2013)

New sea water pump on Port engine (2013)

New belts on both engines New sea water pump on Port engine

Disclaimer

The Company offers the details of this vessel in good faith but cannot guarantee or warrant the accuracy of this information nor warrant the condition of the vessel. A buyer should instruct his agents, or his surveyors, to investigate such details as the buyer desires validated. This vessel is offered subject to prior sale, price change, or withdrawal without notice.

Exclusions

Owner's personal belongings.

Disclaimer

The Company offers the details of this vessel or yacht in good faith but cannot guarantee or warrant the accuracy of this information nor warrant the condition of the vessel. A buyer should instruct his representatives, agents, or his surveyors, to investigate such details as the buyer desires validated. This vessel or yacht is offered subject to prior sale, price change, or withdrawal without notice.

PHOTOS

Exterior



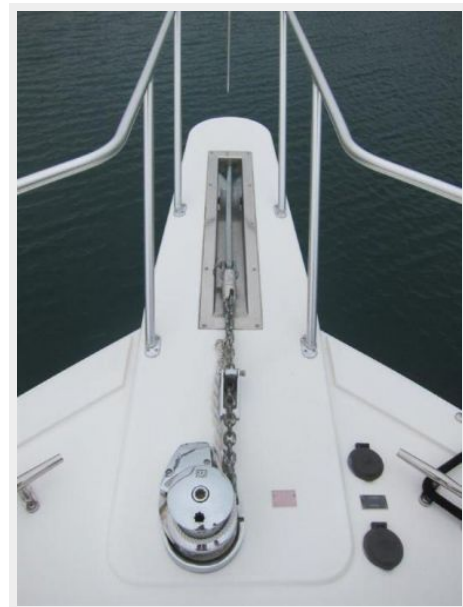
Exterior



Transom



Bow Pulpit



Foredeck



Foredeck



Foredeck



Hardtop



Flybridge



Flybridge



Flybridge



Enclosed Flybridge



Enclosed Flybridge



Enclosed Flybridge



Enclosed Flybridge



Enclosed Flybridge



Enclosed Flybridge



Enclosed Flybridge



Salon



Salon



Salon



Salon



Salon



Salon



Galley



Galley



Companionway



Washer and Dryer



Master Stateroom



Master Stateroom



Master Stateroom



Master Stateroom Head



Master Stateroom Head



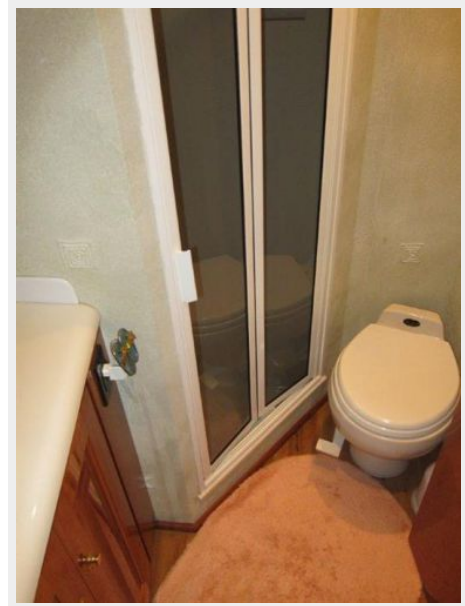
VIP Stateroom



VIP Stateroom Head



VIP Stateroom Head



Guest Stateroom



Guest Head



Guest Stateroom

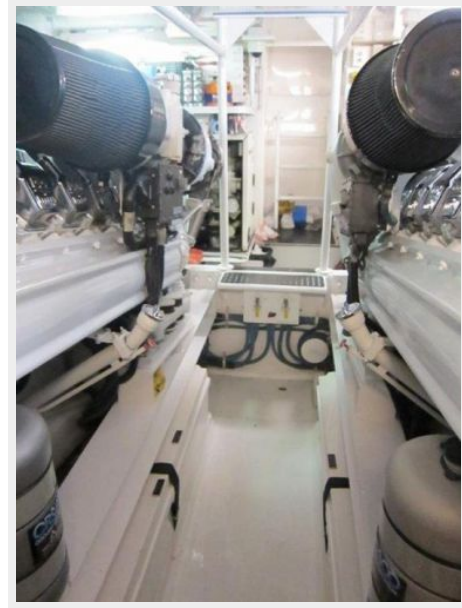
Guest Stateroom



Engine Room



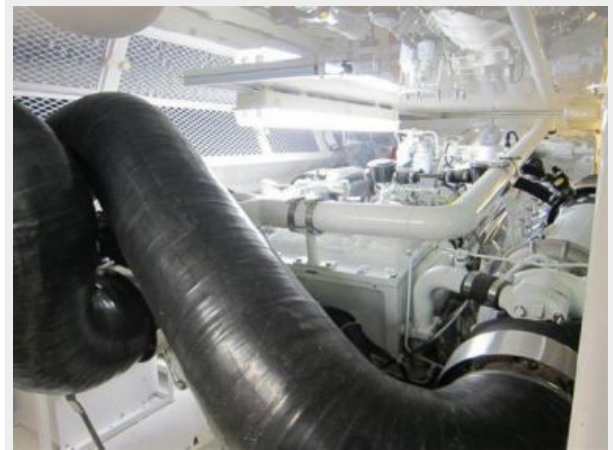
Engine Room



Engine Room



Engine Room



Engine Room



Engine Room



CONTACTS

Andrey Shestakov, leading yacht broker of the sales department of Shestakov Yacht Sales Inc. Shestakov Yacht Sales Inc., the official representative of the Miami/Fort Lauderdale FL headquarters.

Contact details

Email: andrey@shestakovyachtsales.com

Web: shestakovyachtsales.com/en/

Telephones

USA: +1(954)274-4435

Office hours

Monday – Saturday: **9:00 - 21:00** EDT

Sunday: **closed**

Address



Harbour Towne Marina, 850 NE 3rd St,
STE 213, Dania, FL 33004