

KITTY HAWK — VIKING



Builder: VIKING

LOA: 50' 0" (15.24m)

Year Built: 2000

Beam: 16' 4" (4.98m)

Model: Sport Fisherman

Price: PRICE ON APPLICATION

Location: United States

Our experienced yacht broker, Andrey Shestakov, will help you choose and buy a yacht that best suits your needs **Kitty Hawk — VIKING** from our catalogue. Presently, at Shestakov Yacht Sales Inc., we have a wide variety of yachts available on our sale's list. We also work in close contact with all the big yacht manufacturers from all over the world.

If you would like to buy a yacht **Kitty Hawk — VIKING** or would like help answering any questions concerning purchasing, selling or chartering a yacht, please call **+1(954)274-4435**

TABLE OF CONTENTS

TABLE OF CONTENTS	2
SPECIFICATIONS	5
Overview	5
Basic Information	5
Dimensions	5
Speed, Capacities and Weight	5
Accommodations	5
Hull and Deck Information	5
Engine Information	6
DETAILED INFORMATION	7
Accommodations	7
Galley	7
Electrical Equipment	7
Electronics	7
Deck Equipment	7
Mechanical	7
Exclusions	8
Disclaimer	8
Exclusions	8
Disclaimer	8
PHOTOS	9
Exterior	9
Cockpit	9
Cockpit	9
Flybridge	9
Helm	9
Helm	9
Helm	10

Helm	10
Flybridge	10
Flybridge	10
Flybridge	10
Salon	10
Salon	11
Salon	11
Dinette	11
Salon	11
Galley	11
Galley	11
Companionway	12
Companionway Closet	12
Companionway Closet	12
Washer and Dryer	12
Starboard Stateroom	13
Starboard Stateroom	13
Starboard Stateroom Head	13
Forward Stateroom	13
Forward Stateroom Head	14
Forward Stateroom	14
Engine Room	14
Engine Room	14
Engine Room	14
Engine Room	14
Engine Room	15
Engine Room	15
Engine Room	15
Engine Room	15

CONTACTS	16
Contact details	16
Telephones	16
Office hours	16
Address	16

SPECIFICATIONS

Overview

This 2000 Viking 50 Convertible is one of the biggest 50-footers you'll find. Enjoyed solely in the fresh waters of the Great Lakes this Viking 50' was custom built with two staterooms and two heads. Powered with the MAN 1050's and fit with a hydraulic swim platform "Kitty Hawk" is a great cruising convertible. Stored inside a heated building in the winter months and maintained by an experienced boat owner you'll want to put this Viking 50' Convertible on your short list.

Basic Information

Category: Sport Fisherman

Sub Category: Convertible

Model Year: 2000

Year Built: 2000

Country: United States

Vessel Top: Hardtop

Fly Bridge: Yes

Cockpit: Yes

Dimensions

LOA: 50' 0" (15.24m)

Beam: 16' 4" (4.98m)

Speed, Capacities and Weight

Water Capacity: 208 Gallons

Fuel Capacity: 805 Gallons

Accommodations

Total Cabins: 2

Total Heads: 2

Hull and Deck Information

Hull Material: Fiberglass

Engine Information

Engines: 2

Manufacturer: MAN

Model: 2840LE403

Engine Type: Inboard

Fuel Type: Diesel

DETAILED INFORMATION

Accommodations

Custom two-stateroom layout

CruisAir air conditioning/heat Central vacuum system VacuFlush heads L-shape ultraleather salon sofa with storage and sleeper Ottoman with storage RCA flat panel TV with JVC home theatre system - salon Haier flat panel TV's - each stateroom

Galley

Subzero refrigerator and freezer Gaggenau oven Gaggenau (4) burner electric stove GE microwave oven KitchenAid InstaHot water Amtico teak & holly flooring

Electrical Equipment

Onan 17kw generator with sound shield and 1298 hours Glendinning 50 Amp Cablemaster C-Power IsoBoost 12 Volt/24 volt DC power Battery charger

Electronics

Northstar 961XD DGPS Color GPS Chartplotter Northstar 6000i GPS/Chartplotter with engine room camera feed Simrad-Robertson AP20-RPU 80 Autopilot Simrad-Anritsu RA726UA 10kw 96 NM Radar with 6' Open array Simrad EQ32 Sounder (2) SEA156 VHF Radios w/handset B&G Network Quad ACR RCL-100 Search light w/point pad SeaTel Satellite Antenna Sony SAT-A4 DSS receiver Kenwood premium AM/FM/CD stereo with MTX Thunder amps (2) sets Kenwood 6X9 Loud speakers Bose weather proof cockpit speakers

Deck Equipment

Factory hardtop with 4-sided EZ2CY enclosure curtains and Track-to-Track installation Pipewelders Hydraulic Lift swim platform STIDD helm and companion seats on bridge Flybridge refrigerator Cockpit freezer with dual thermostat Rupp outriggers with silver and gold trim Radar mast on hardtop 18" Bomar hatch over companion seat on bridge hardtop (6) rod holders aft of bridge Handrail on side of flybridge console Windlass with 300' of chain rode Cockpit indirect lighting Buell air horns Foredeck freshwater washdown

Mechanical

Trolling valves Engine room cameras Engine exhaust temperature gauges at helm Fuel flow meters with logs/resets at helm Algea-X FPS-500A fuel polishing system Bilge blowers (6) Automatic bilge pumps Halon automatic engine room fire extinguishing system Awlgrip engine room Fuel priming pumps Engine room door lock

Exclusions

Owner's personal belongings Tools

Disclaimer

The Company offers the details of this vessel in good faith but cannot guarantee or warrant the accuracy of this information nor warrant the condition of the vessel. A buyer should instruct his agents, or his surveyors, to investigate such details as the buyer desires validated. This vessel is offered subject to prior sale, price change, or withdrawal without notice.

Exclusions

Owner's personal belongings.

Disclaimer

The Company offers the details of this vessel or yacht in good faith but cannot guarantee or warrant the accuracy of this information nor warrant the condition of the vessel. A buyer should instruct his representatives, agents, or his surveyors, to investigate such details as the buyer desires validated. This vessel or yacht is offered subject to prior sale, price change, or withdrawal without notice.

PHOTOS

Exterior



Cockpit



Cockpit



Flybridge



Helm



Helm



Helm



Helm



Flybridge



Flybridge



Flybridge



Salon



Salon



Salon



Dinette



Salon



Galley



Galley



Companionway



Companionway Closet



Companionway Closet



Washer and Dryer



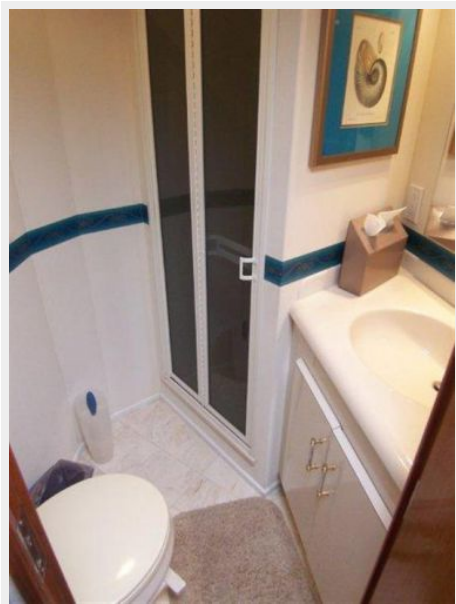
Starboard Stateroom



Starboard Stateroom



Starboard Stateroom Head



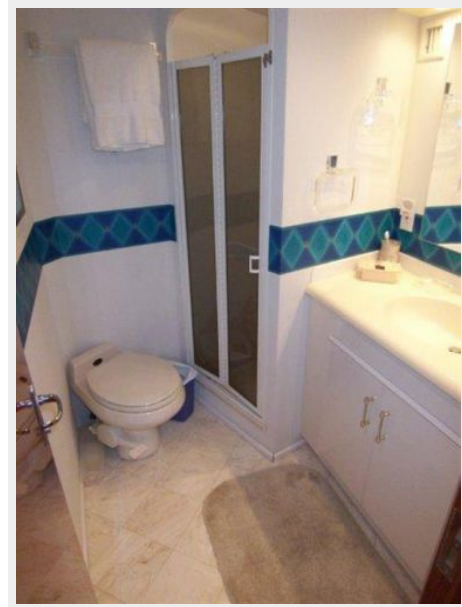
Forward Stateroom



Forward Stateroom



Forward Stateroom Head



Engine Room



Engine Room



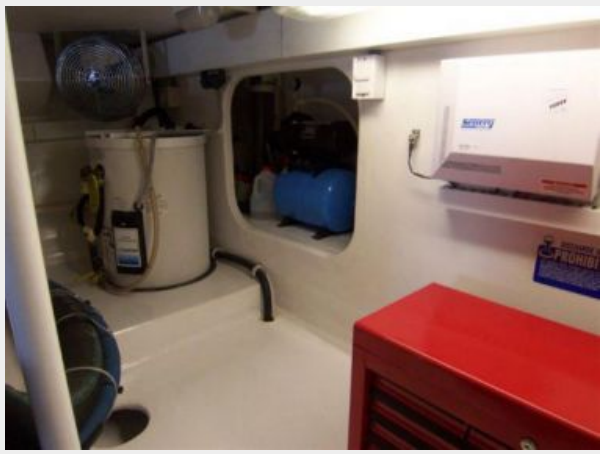
Engine Room



Engine Room



Engine Room



Engine Room



Engine Room



Engine Room



CONTACTS

Andrey Shestakov, leading yacht broker of the sales department of Shestakov Yacht Sales Inc. Shestakov Yacht Sales Inc., the official representative of the Miami/Fort Lauderdale FL headquarters.

Contact details

Email: andrey@shestakovyachtsales.com

Web: shestakovyachtsales.com/en/

Telephones

USA: +1(954)274-4435

Office hours

Monday – Saturday: **9:00 - 21:00** EDT

Sunday: **closed**

Address



Harbour Towne Marina, 850 NE 3rd St,
STE 213, Dania, FL 33004